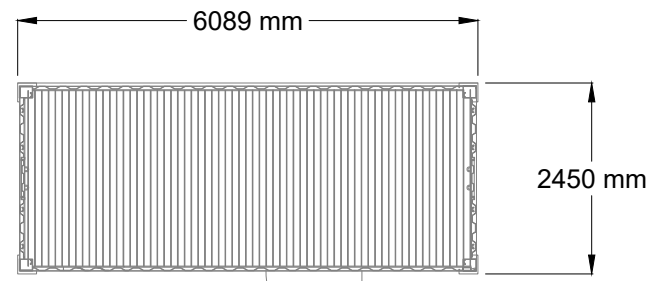
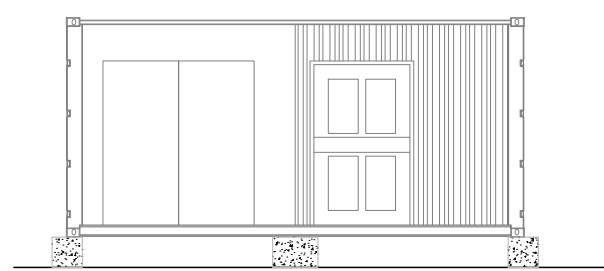


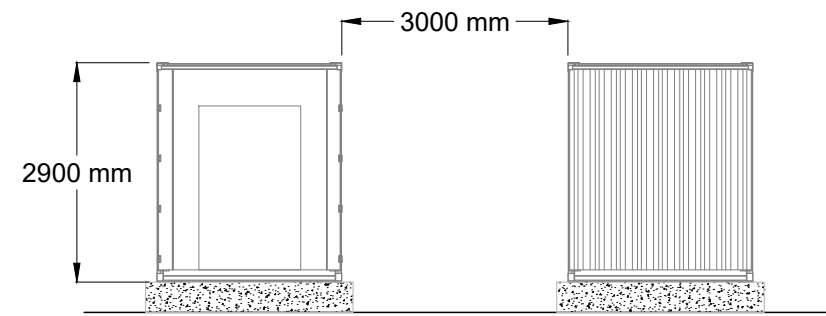
INDICATIVE POWER CONVERSION SYSTEM DETAILS



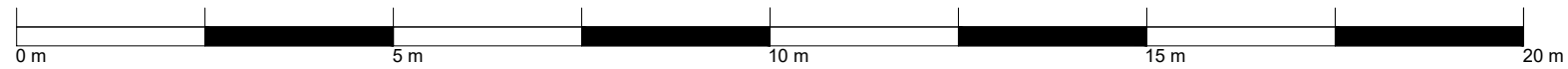
PCS CONTAINER PLAN
SCALE 1:100



PCS CONTAINER FRONT ELEVATION
SCALE 1:100



PCS CONTAINER END ELEVATIONS
SCALE 1:100



- NOTES:
- 1. THIS DRAWING IS INDICATIVE FOR PLANNING PURPOSES ONLY.
 - 2. FINAL SELECTION OF EQUIPMENT SUBJECT TO DETAILED DESIGN POST PLANNING PERMISSION.
 - 3. POWER CONVERSION SYSTEMS (PCS) ARE USED TO CONNECT MULTIPLE BATTERY ENERGY STORAGE SYSTEM CONTAINERS STORING ENERGY AT LOW DC VOLTAGE AND CONVERT ENERGY TO MEDIUM AC VOLTAGE (33 kV). EACH PCS CONTAINS:
 - 3.1. 33 kV SWITCHGEAR
 - 3.2. 33 / 1 kV TRANSFORMER,
 - 3.3. LV AC SWITCHGEAR
 - 3.4. AC / DC INVERTER
 - 3.5. LV DC SWITCHGEAR.

Title:
INDICATIVE POWER CONVERSION
SYSTEM DETAILS

Project:
LIMEKILN BESS

Source:

Client:

Drawn by:
SPD

Date: JULY 2025	Number: 9
--------------------	--------------

Scale: 1:100 @ A3	Revision no: 1
----------------------	-------------------

