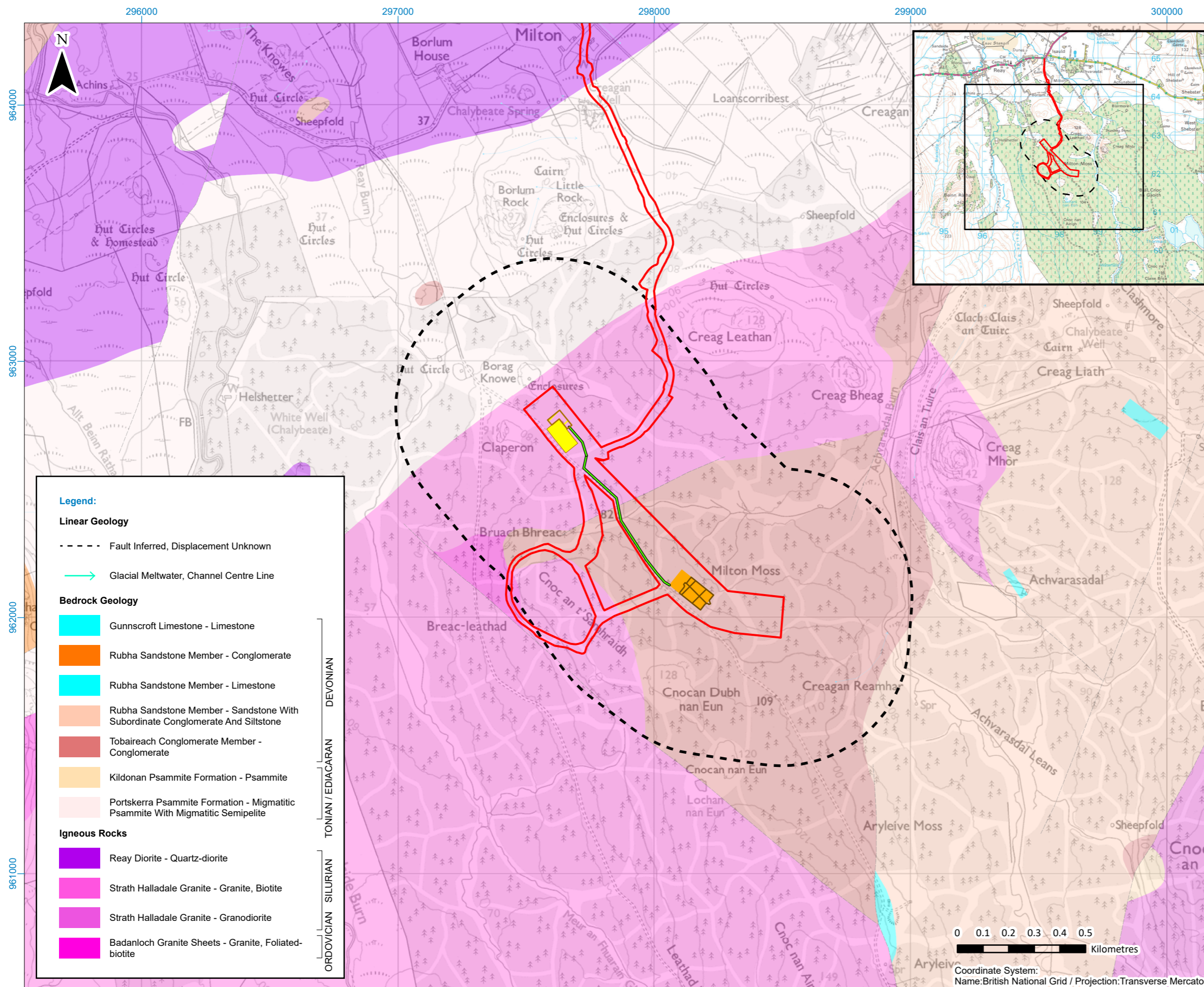


Figure 9.4a : Bedrock Geology



**Legend:**

**Linear Geology**

- - - - Fault Inferred, Displacement Unknown
- Glacial Meltwater, Channel Centre Line

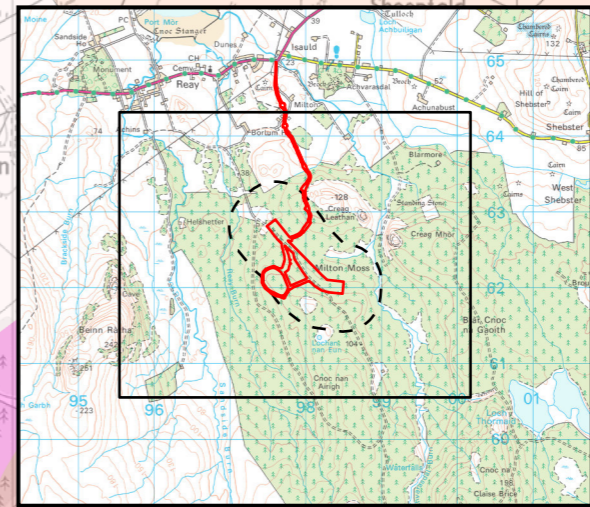
**Bedrock Geology**

- Gunnscoft Limestone - Limestone
- Rubha Sandstone Member - Conglomerate
- Rubha Sandstone Member - Limestone
- Rubha Sandstone Member - Sandstone With Subordinate Conglomerate And Siltstone
- Tobaireach Conglomerate Member - Conglomerate
- Kildonan Psammite Formation - Psammite
- Portskerra Psammite Formation - Migmatitic Psammite With Migmatitic Sempelite

**Igneous Rocks**

- Reay Diorite - Quartz-diorite
- Strath Halladale Granite - Granite, Biotite
- Strath Halladale Granite - Granodiorite
- Badanloch Granite Sheets - Granite, Foliated-biotite

DEVONIAN  
TONIAN / EDIACARAN  
ORDOVICIAN SILURIAN



**Legend:**

- Proposed Site Boundary
- Study Area (Developable Area 500 m Buffer)
- Proposed Substation Extension
- Existing Substation
- Proposed Battery Energy Storage System (BESS)
- Proposed Battery Energy Storage System (BESS) Compound Area
- Indicative Underground Cable Route

<b>Title</b>	Bedrock Geology	
<b>Project:</b>	Limekiln Battery Energy Storage System (BESS)	
<b>Source:</b>	Credits: © Crown copyright [and database rights] (2025) AC0000808122 OS OpenData. Bedrock Geology data obtained via BGS WMS. British Geological Survey ©NERC. All Rights Reserved [2025].	
<b>Client:</b>	Boralex	
<b>Drawn by:</b>	MM	<b>Checked:</b> KR
<b>Date:</b>	11/07/2025	<b>Figure:</b> 9.4
<b>Scale:</b>	1:15,000	<b>Revision No.</b> 0

0 0.1 0.2 0.3 0.4 0.5 Kilometres

Coordinate System:  
Name:British National Grid / Projection:Transverse Mercator

