

Figure 10.1a : Local Hydrology

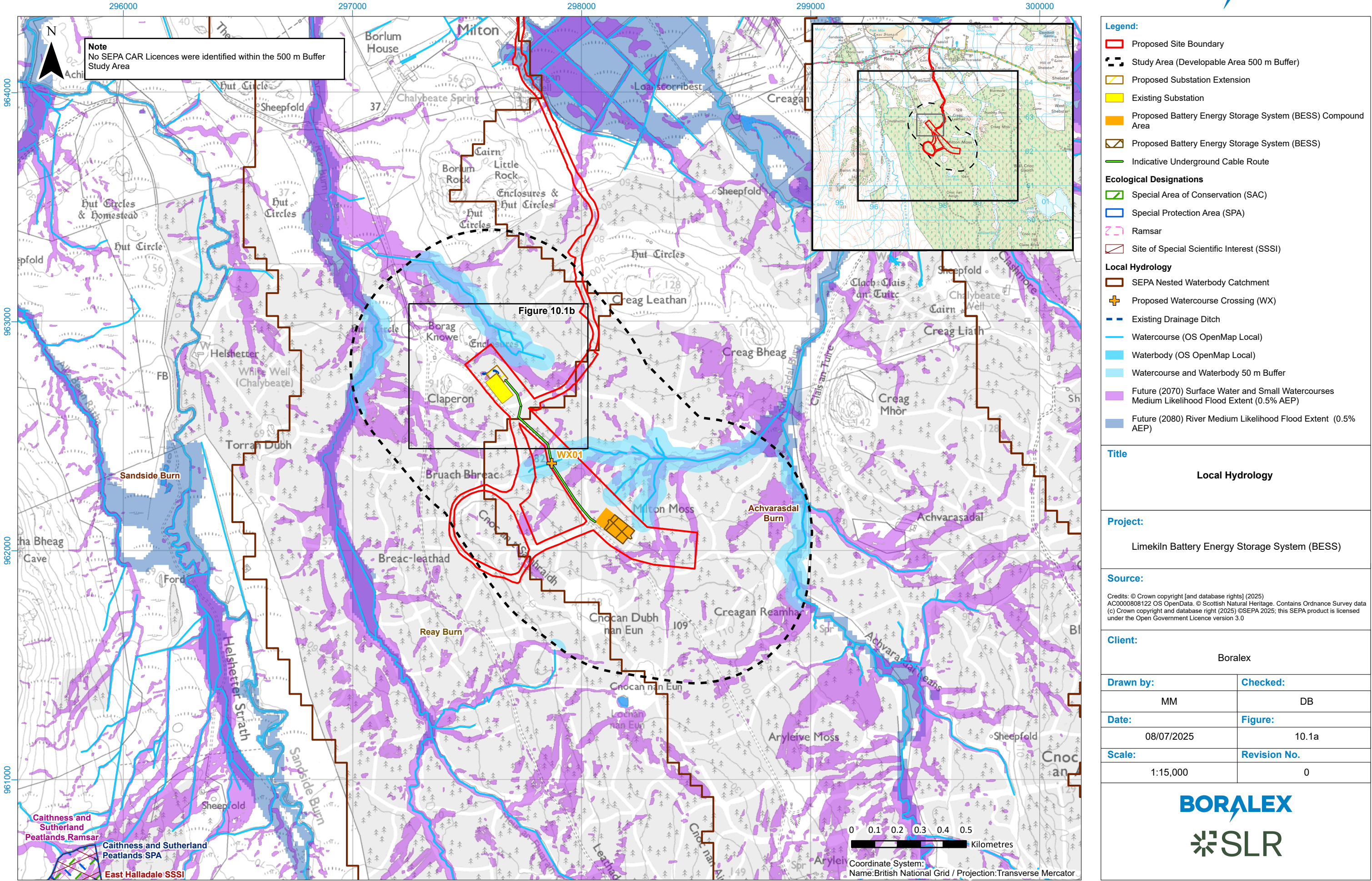
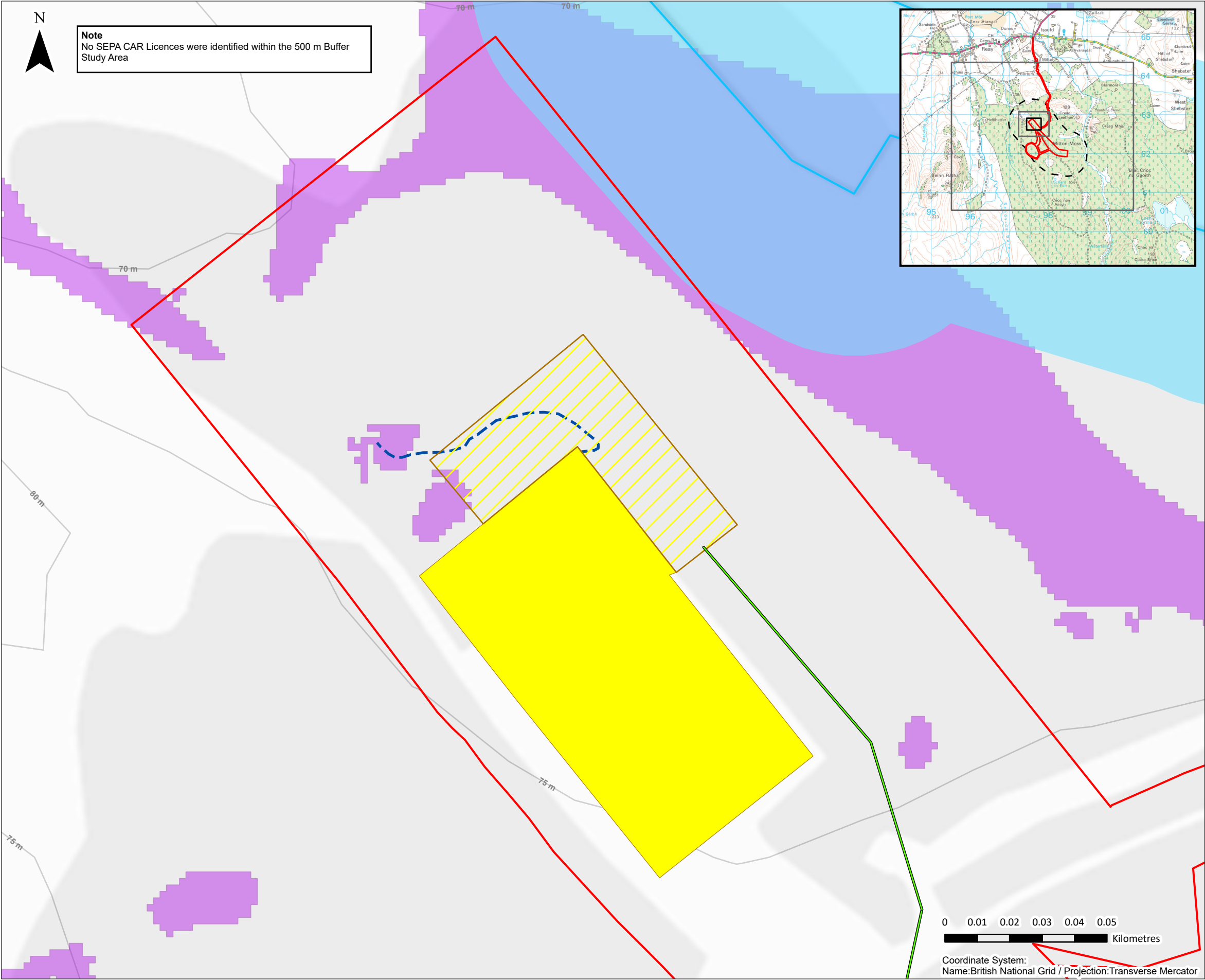




Figure 10.1b : Local Hydrology



<b>Legend:</b> <ul style="list-style-type: none"><li>Proposed Site Boundary</li><li>Proposed Substation Extension</li><li>Existing Substation</li><li>Indicative Underground Cable Route</li><li>Existing Drainage Ditch</li><li>Watercourse (OS OpenMap Local)</li><li>Watercourse and Waterbody 50 m Buffer</li><li>Future (2070) Surface Water and Small Watercourses Medium Likelihood Flood Extent (0.5% AEP)</li></ul>	
<b>Title</b> <p>Local Hydrology</p>	
<b>Project:</b> <p>Limekiln Battery Energy Storage System (BESS)</p>	
<b>Source:</b> <p>Credits: © Crown copyright [and database rights] (2025) AC0000808122 OS OpenData. © Scottish Natural Heritage. Contains Ordnance Survey data (c) Crown copyright and database right (2025) ©SEPA 2025; this SEPA product is licensed under the Open Government Licence version 3.0</p>	
<b>Client:</b> <p>Boralex</p>	
<b>Drawn by:</b> <p>MM</p>	<b>Checked:</b> <p>DB</p>
<b>Date:</b> <p>08/07/2025</p>	<b>Figure:</b> <p>10.1b</p>
<b>Scale:</b> <p>1:1,200</p>	<b>Revision No.</b> <p>0</p>
<div><div><div>BORALEX</div><div>SLR</div></div></div>	