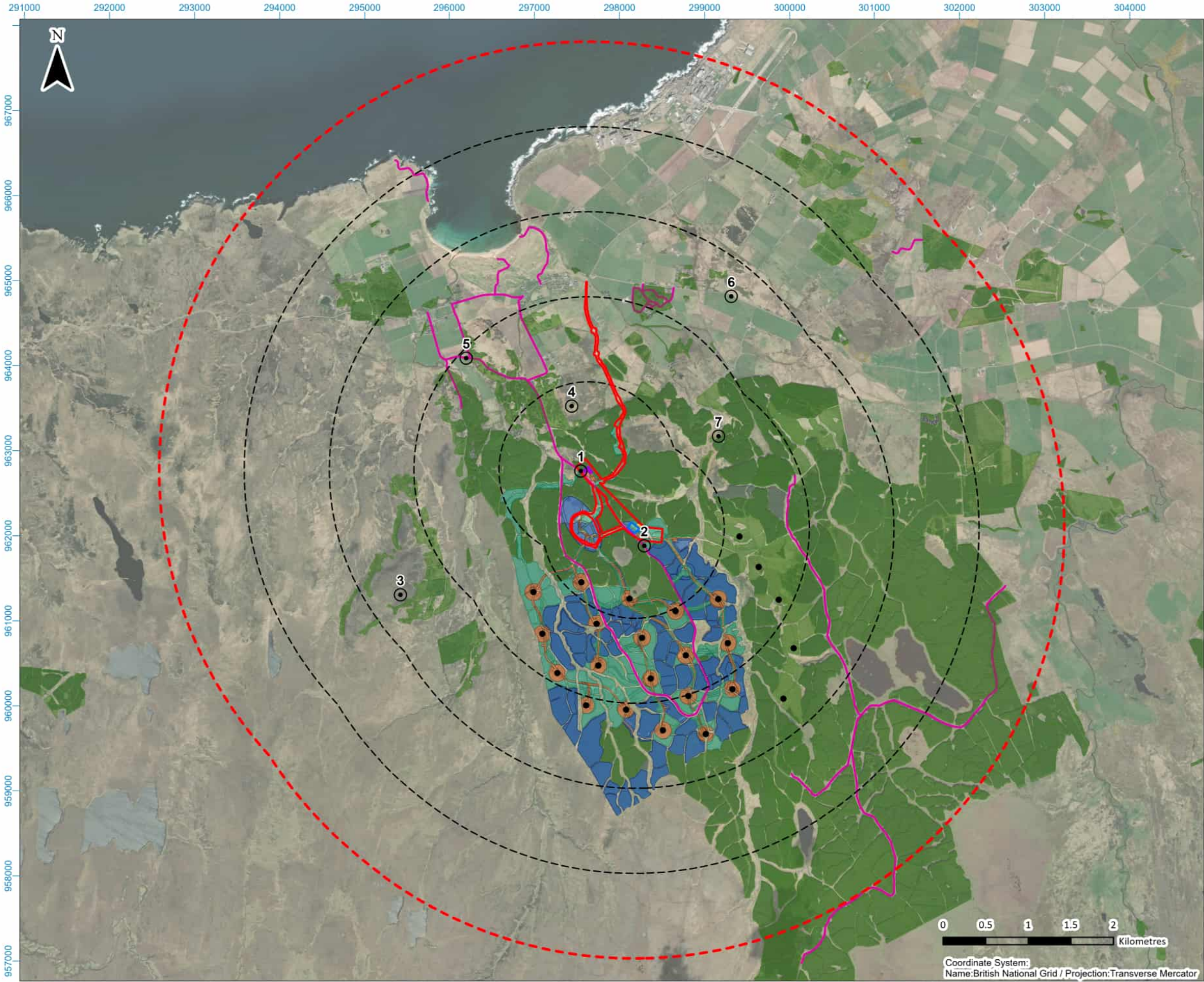


Figure 5.1: Site Location and Context



**Legend:**

- Proposed Site Boundary
- Substation Extension Footprint
- Proposed Battery Energy Storage System (BESS) Footprint
- 1 km Radii
- 5 km Study Area
- Viewpoint
  - 1 - CA11.03 Limekiln Forest Core Path (Substation)
  - 2 - CA11.03 Limekiln Forest Core Path (BESS compound)
  - 3 - Beinn Ratha
  - 4 - Borlum Hill
  - 5 - Reay FootPath
  - 6 - Shebster
  - 7 - Clach Clais an Tuirc (Cultural Heritage)
- Woodland
- Sustainable Drainage System (SuDS)
- Forestry Removal
  - Phase 1
  - Phase 2
- Turbine/Windfarm Infrastructure
- Limekiln As Built Turbine Locations
- Core Path

**Title**

**Site Location and Context**

**Project:**

Limekiln BESS and Substation Extension LVA

**Source:**

Credits: © Crown copyright and database rights (2025) Ordnance Survey AC0003808122. Maxar, Microsoft. Copyright Scottish Government, contains Ordnance Survey data © Crown copyright and database right (2025). Contains OS data © Crown copyright and database right (2025).

**Client:**

Boralex

<b>Drawn by:</b>	<b>Checked:</b>
CS	JW
<b>Date:</b>	<b>Figure:</b>
14/07/2025	428.013385.00001.0009.1
<b>Scale:</b>	<b>Revision No.</b>
1:45,000	01

**BORALEX**

**SLR**



Figure 5.2: Bare Earth Zone of Theoretical Visibility

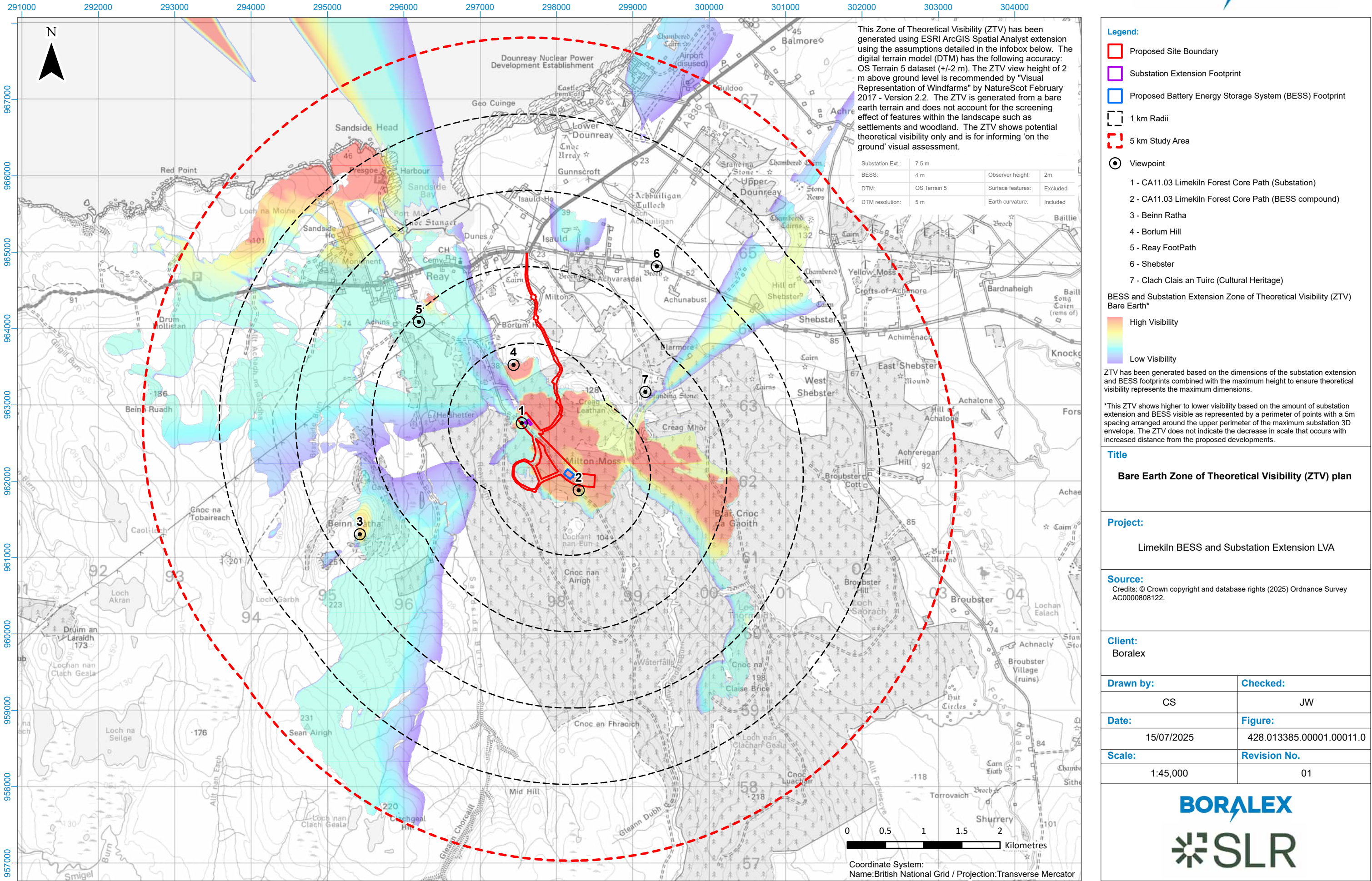




Figure 5.3: Screened Zone of Theoretical Visibility

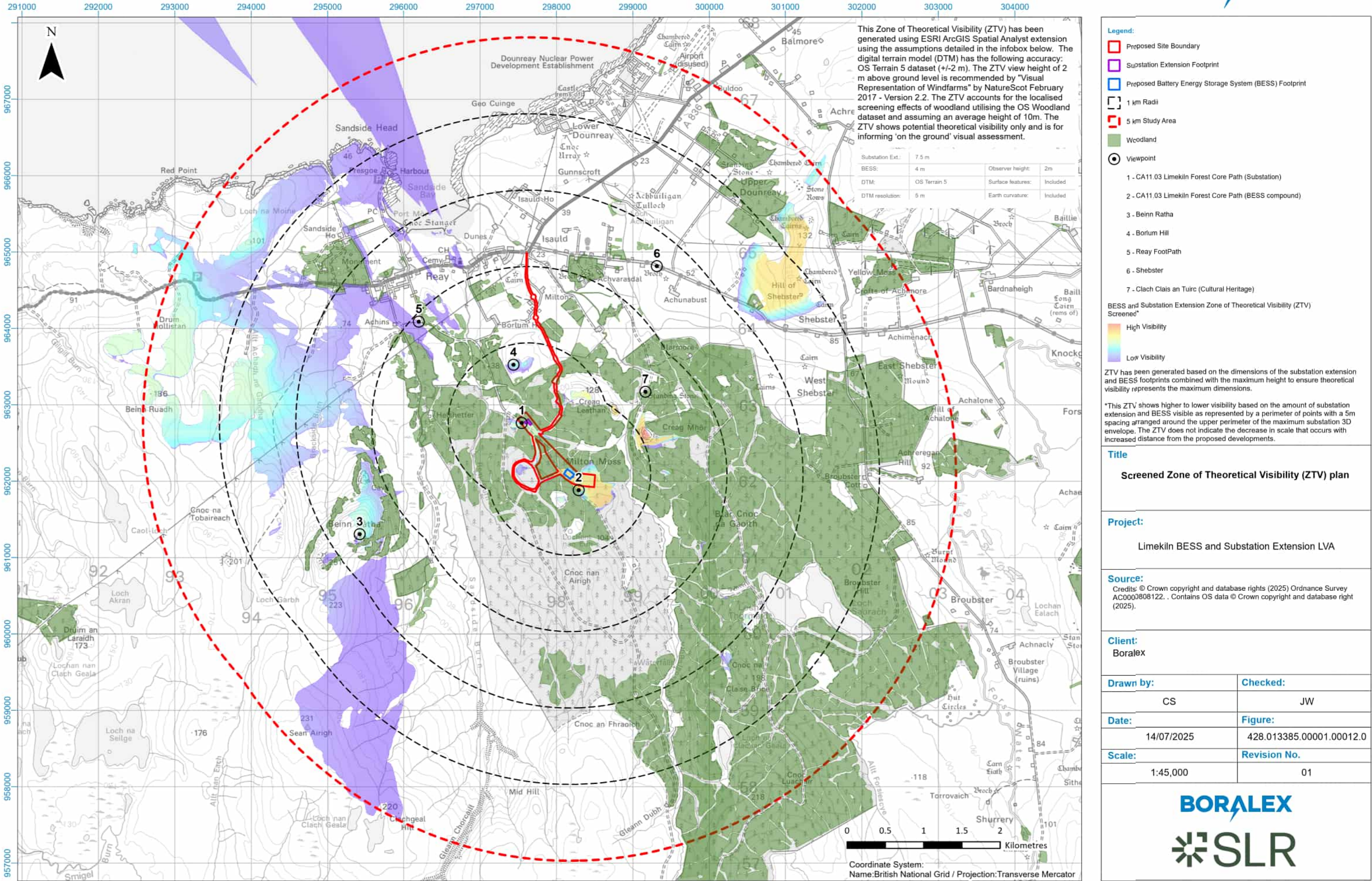




Figure 5.4: Landscape Character with Screened Zone of Theoretical Visibility

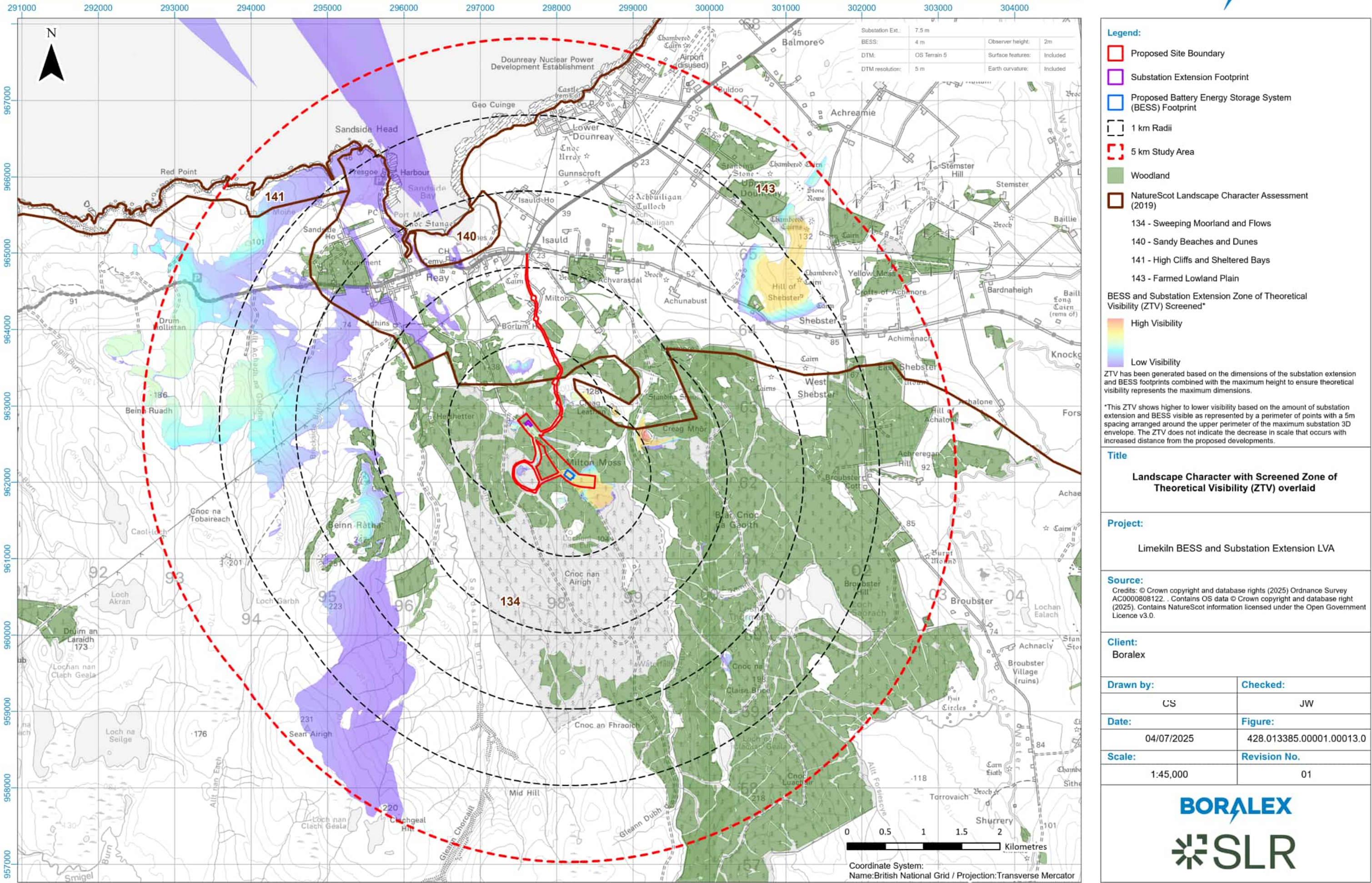




Figure 5.5: Landscape Designations with Screened Zone of Theoretical Visibility

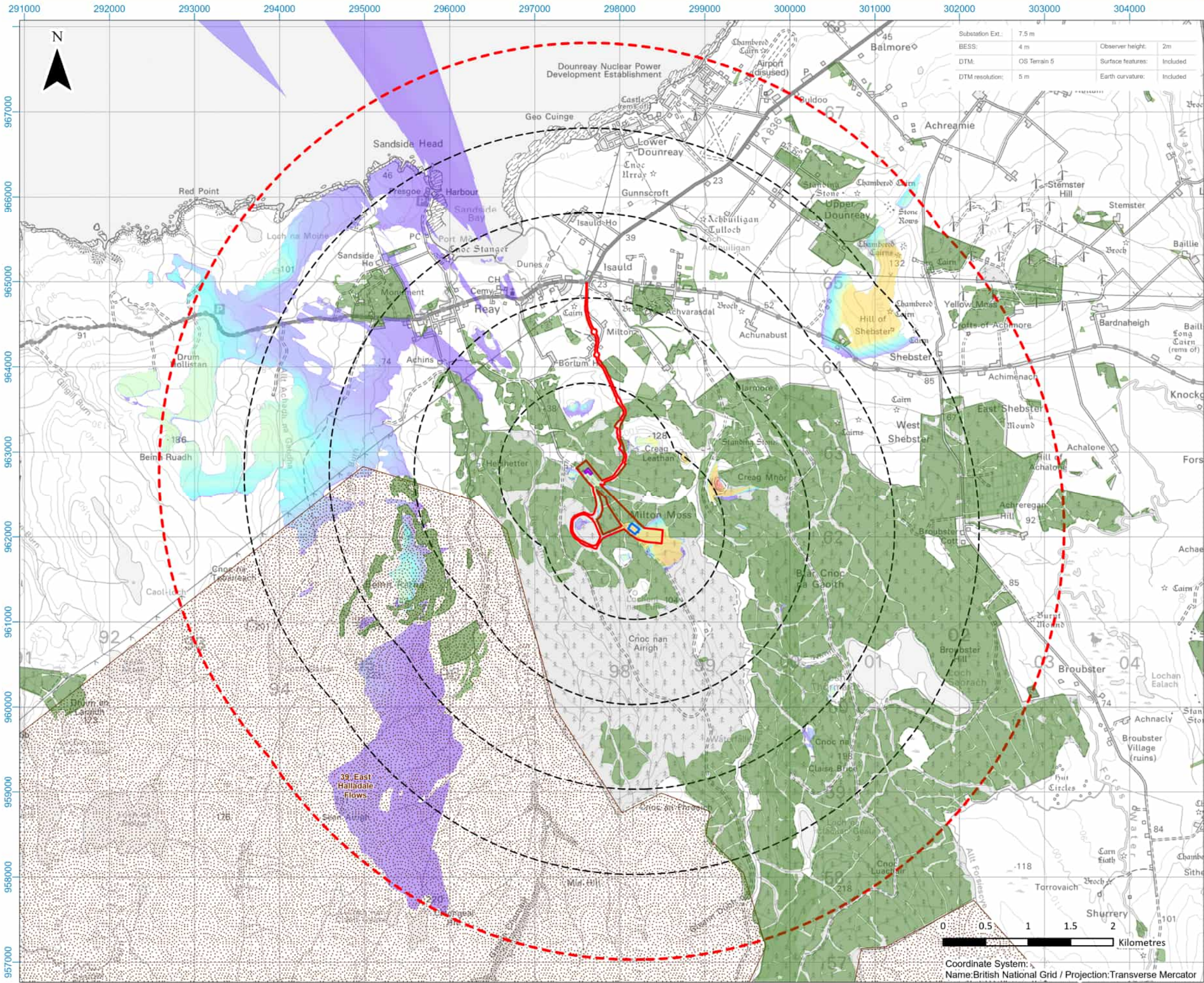




Figure 5.6: Visual Receptors with Screened Zone of Theoretical Visibility

