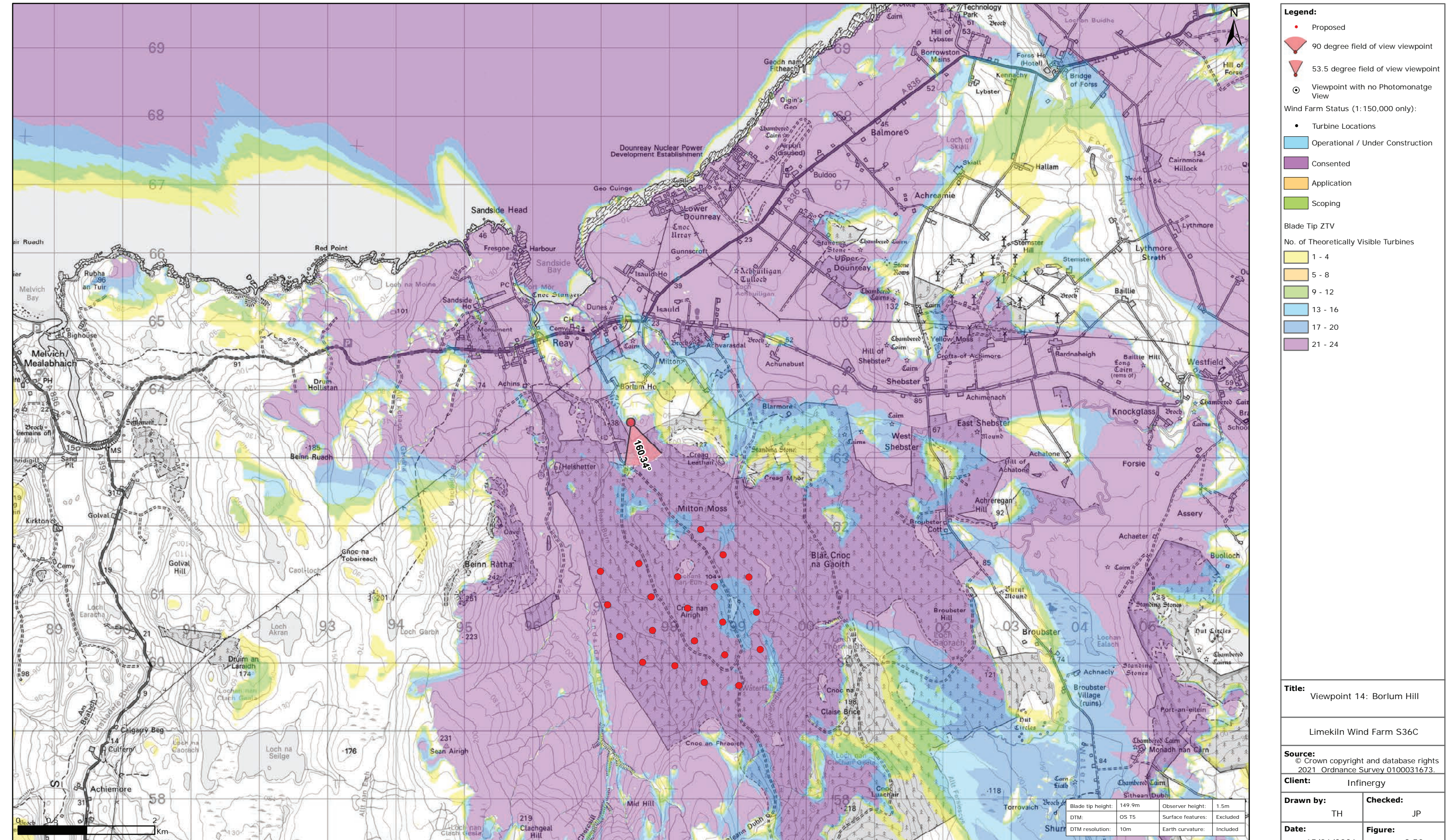


Viewpoint Location Plan Baseline Panorama  
Scale: 1:150,000



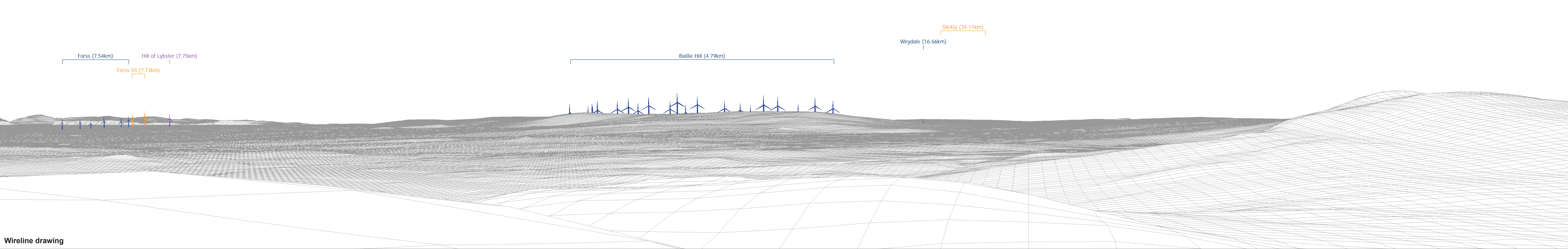
Viewpoint Location Plan  
Scale: 1:50,000 (Blade Tip ZTV)





Baseline photograph

This image provides landscape and visual context only

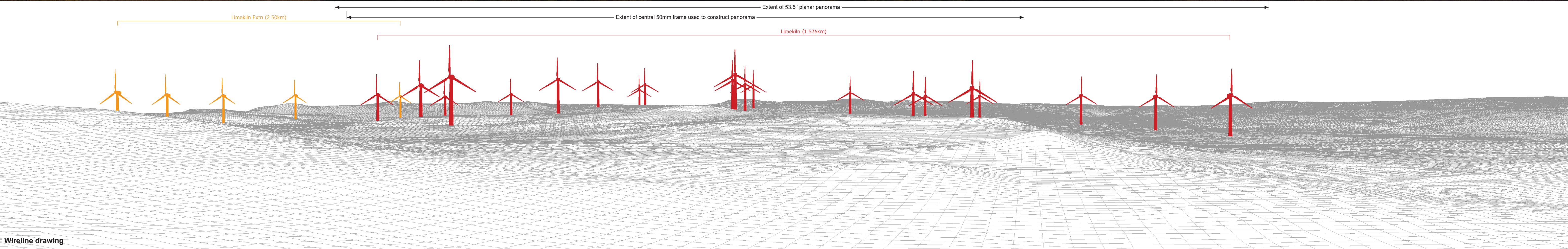


Wireline drawing

OS reference:	297435 E 963520 N	Horizontal field of view:	90° (cylindrical projection)	Camera:	Canon EOS 5D Mark II
Eye level:	97 m AOD	Principal distance	522 mm	Lens:	50mm (Canon EF 50mm f/1.4)
Direction of view:	76°			Camera height:	1.5 m AGL
Nearest turbine:	1.873 km			Date and time:	15/04/21, 16:37

Figure: 9.50b  
NS Viewpoint 14: Borlum Hill



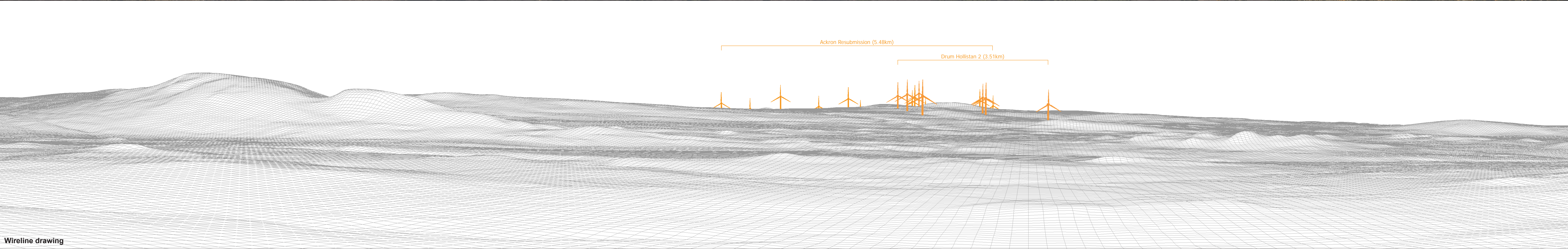






Baseline photograph

This image provides landscape and visual context only



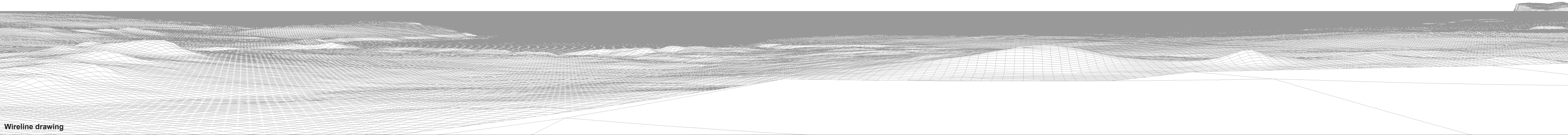
Wireline drawing





Baseline photograph

This image provides landscape and visual context only

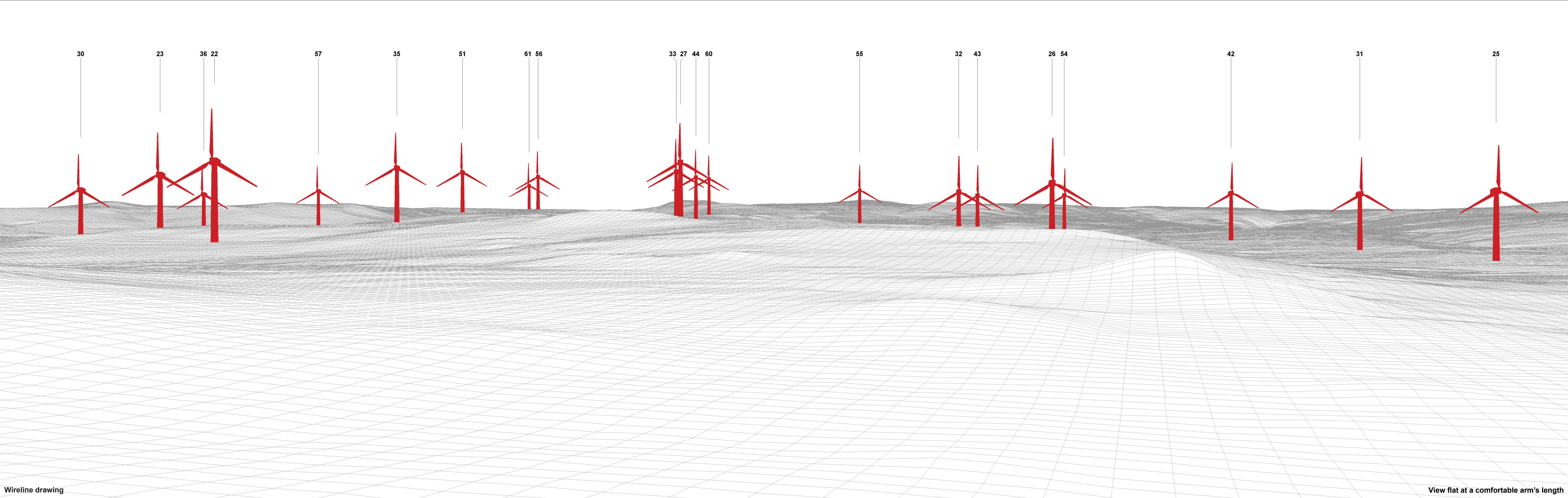


Wireline drawing

OS reference:	297435 E 963520 N	Horizontal field of view:	90° (cylindrical projection)	Camera:	Canon EOS 5D Mark II
Eye level:	97 m AOD	Principal distance	522 mm	Lens:	50mm (Canon EF 50mm f/1.4)
Direction of view:	346°			Camera height:	1.5 m AGL
Nearest turbine:	1.873 km			Date and time:	15/04/21, 16:37

Figure: 9.50e  
NS Viewpoint 14: Borlum Hill





Wireline drawing

View flat at a comfortable arm's length

**Figure: 9.50f**  
**NS Viewpoint 14: Borlum Hill**





Photomontage

View flat at a comfortable arm's length

OS reference:	297435 E 963520 N	Horizontal field of view:	53.5° (planar projection)	Camera:	Canon EOS 5D Mark II	<b>Figure: 9.50g</b> <b>NS Viewpoint 14: Borlum Hill</b> <small>© Crown copyright and database rights 2021 Ordnance Survey 0100031673</small>
Eye level:	97 m AOD	Principal distance	812.5 mm	Lens:	50mm (Canon EF 50mm f/1.4)	
Direction of view:	166°	Paper size:	841 x 297 mm (half A1)	Camera height:	1.5 m AGL	
Nearest turbine:	1.873 km	Correct printed image size:	820 x 260 mm	Date and time:	15/04/21, 16:37	