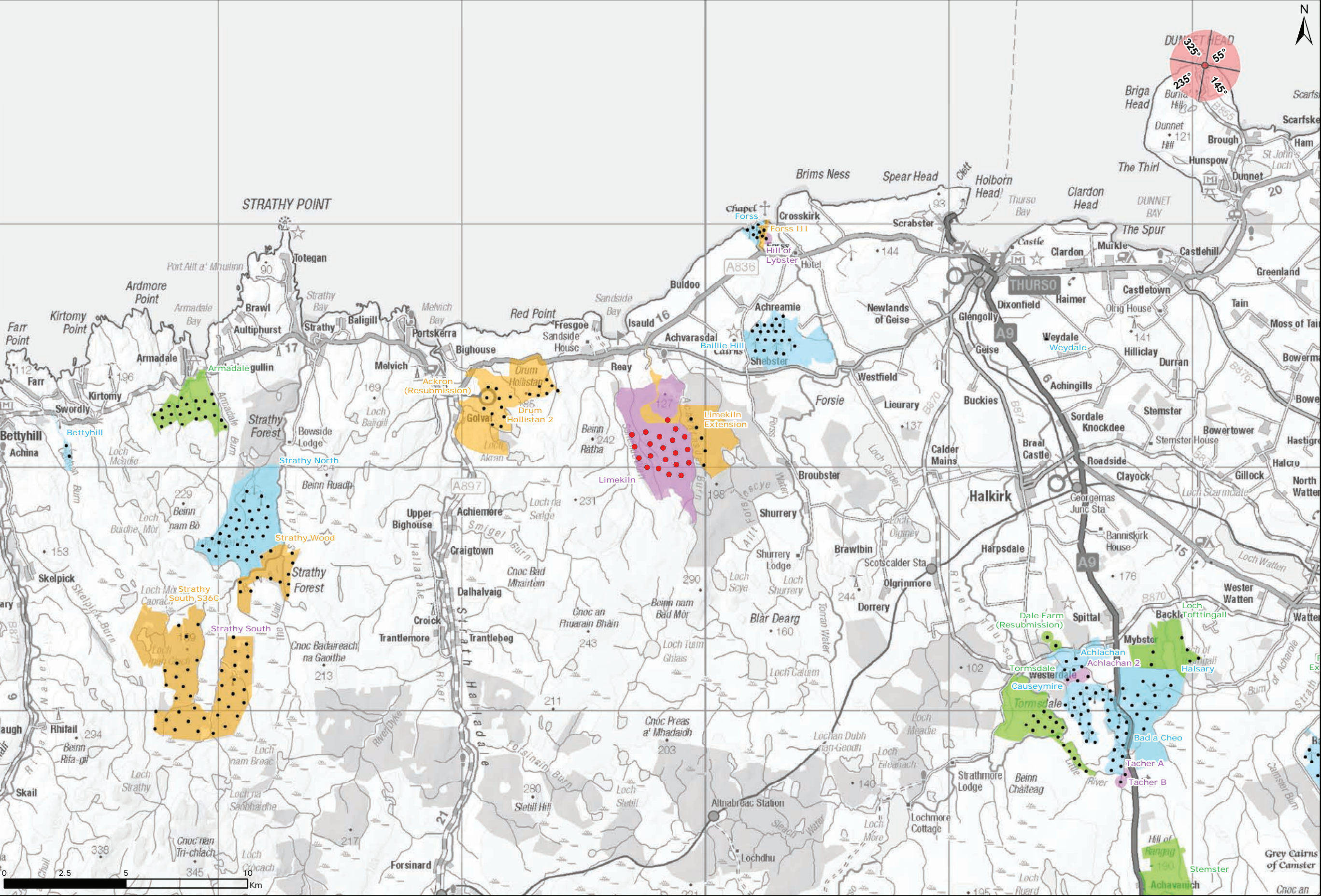
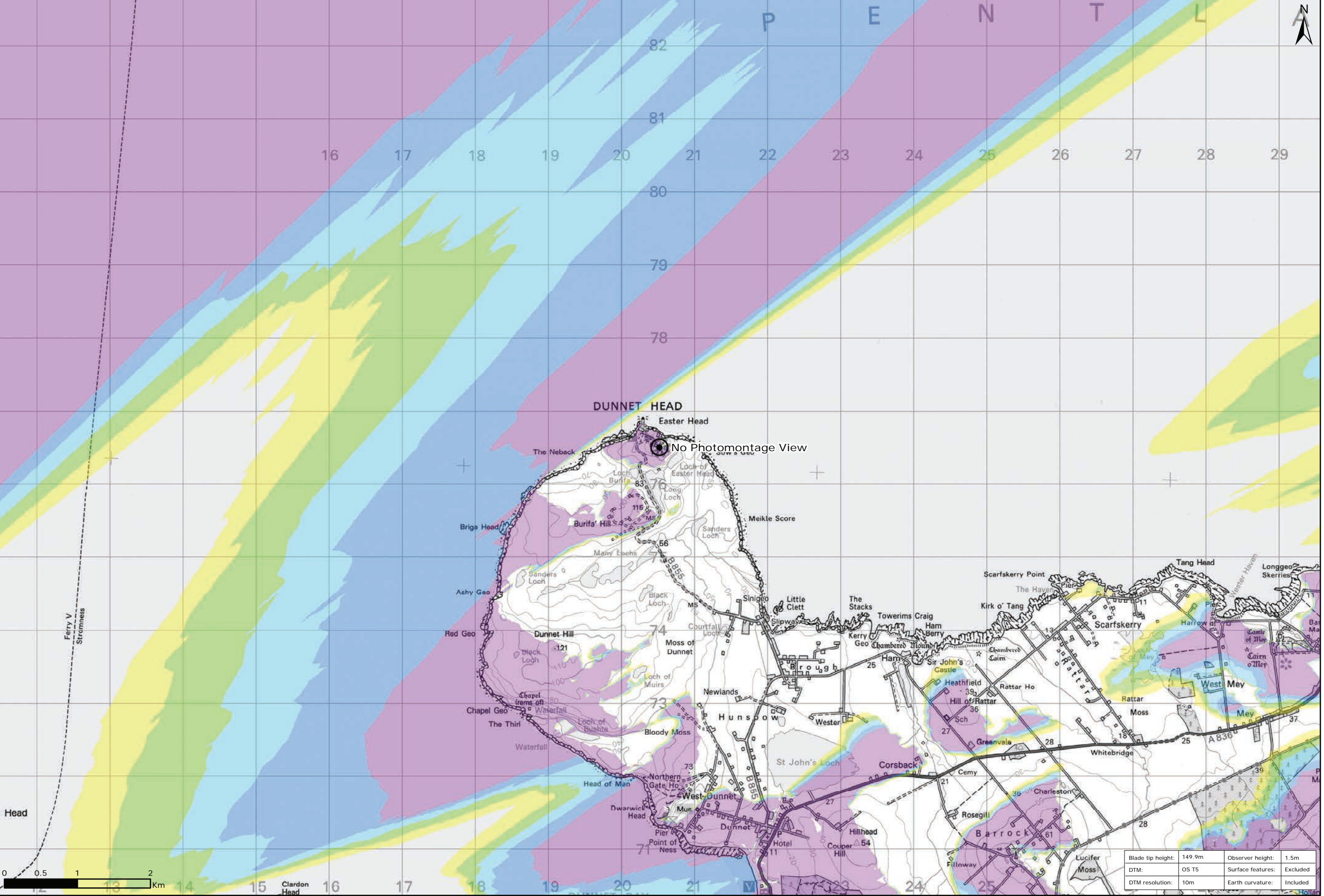


Figure 9.49a: Viewpoint 13: Dunnet Head



Viewpoint Location Plan Baseline Panorama  
Scale: 1:150,000



Viewpoint Location Plan  
Scale: 1:50,000 (Blade Tip ZTV)

Legend:

- Proposed
- 90 degree field of view viewpoint
- 53.5 degree field of view viewpoint
- Viewpoint with no Photomontage View

Wind Farm Status (1:150,000 only):

- Turbine Locations
- Operational / Under Construction
- Consented
- Application
- Scoping

Blade Tip ZTV

No. of Theoretically Visible Turbines

- 1 - 4
- 5 - 8
- 9 - 12
- 13 - 16
- 17 - 20
- 21 - 24

Title: Viewpoint 13: Dunnet Head

Limekiln Wind Farm S36C

Source: Crown copyright and database rights 2021 Ordnance Survey 0100031673

Client: Infinergy

Drawn by: TH

Checked: JP

Date: 15/06/2021

Figure: 9.49a

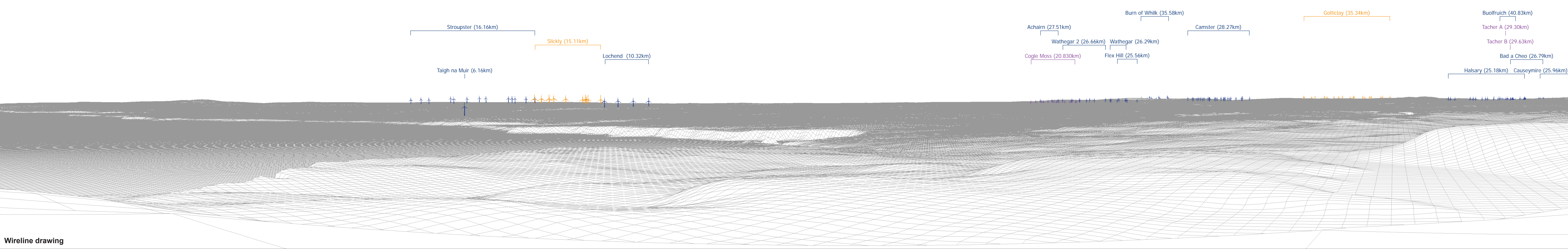
Scale: Multiple

Revision No: 0

INFINERGY

Blade tip height:	149.9m	Observer height:	1.5m
DTM:	OS T5	Surface features:	Excluded
DTM resolution:	10m	Earth curvature:	Included



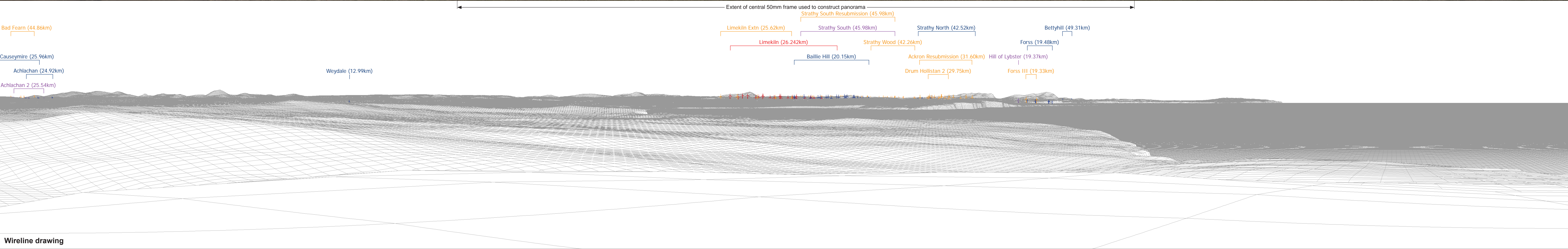






Baseline photograph

This image provides landscape and visual context only



Wireline drawing

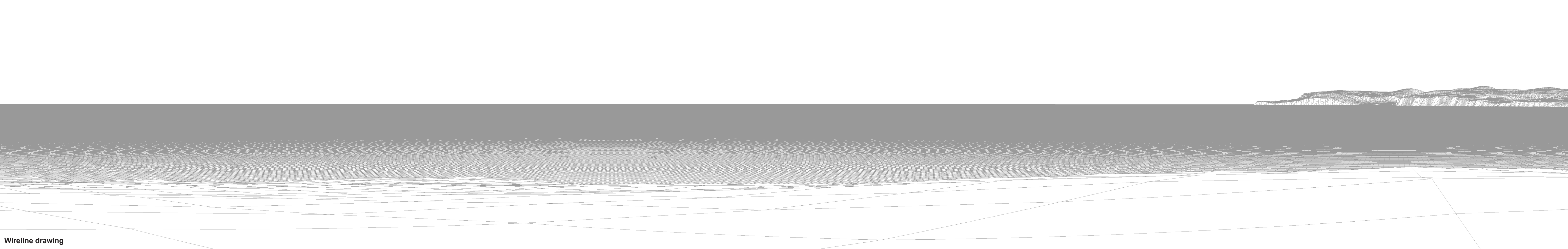
OS reference:	320519 E 976504 N	Horizontal field of view:	90° (cylindrical projection)	Camera:	Canon EOS 5D Mark II	NOTE: Rev A - Adjustment to hub height of Drum Hollistan 2 wind turbines.	Figure: 9.49c Rev A
Eye level:	128.17 m AOD	Principal distance	522 mm	Lens:	50mm (Canon EF 50mm f/1.4)		NS Viewpoint 13: Dunnet Head
Direction of view:	235°			Camera height:	1.5 m AGL		
Nearest turbine:	26.242 km			Date and time:	10/05/12, 14:29		





Baseline photograph

This image provides landscape and visual context only



Wireline drawing

<b>OS reference:</b>	320519 E 976504 N	<b>Horizontal field of view:</b>	90° (cylindrical projection)	<b>Camera:</b>	Canon EOS 5D Mark II
<b>Eye level:</b>	128.17 m AOD	<b>Principal distance</b>	522 mm	<b>Lens:</b>	50mm (Canon EF 50mm f/1.4)
<b>Direction of view:</b>	325°			<b>Camera height:</b>	1.5 m AGL
<b>Nearest turbine:</b>	26.242 km			<b>Date and time:</b>	10/05/12, 14:29

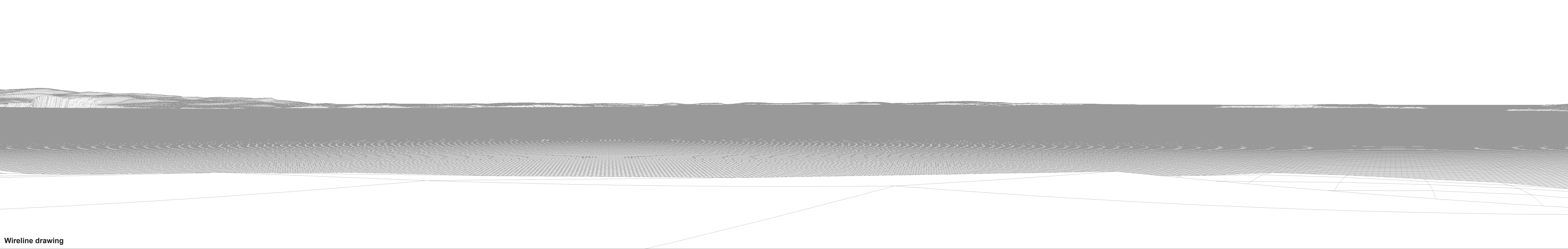
**Figure: 9.49d**  
**NS Viewpoint 13: Dunnet Head**





Baseline photograph

This image provides landscape and visual context only



Wireline drawing

<b>OS reference:</b> 320519 E 976504 N		<b>Horizontal field of view:</b> 90° (cylindrical projection)		<b>Camera:</b> Canon EOS 5D Mark II	
<b>Eye level:</b> 128.17 m AOD		<b>Principal distance:</b> 522 mm		<b>Lens:</b> 50mm (Canon EF 50mm f/1.4)	
<b>Direction of view:</b> 55°				<b>Camera height:</b> 1.5 m AGL	
<b>Nearest turbine:</b> 26.242 km				<b>Date and time:</b> 10/05/12, 14:29	

**Figure: 9.49e**  
**NS Viewpoint 13: Dunnet Head**