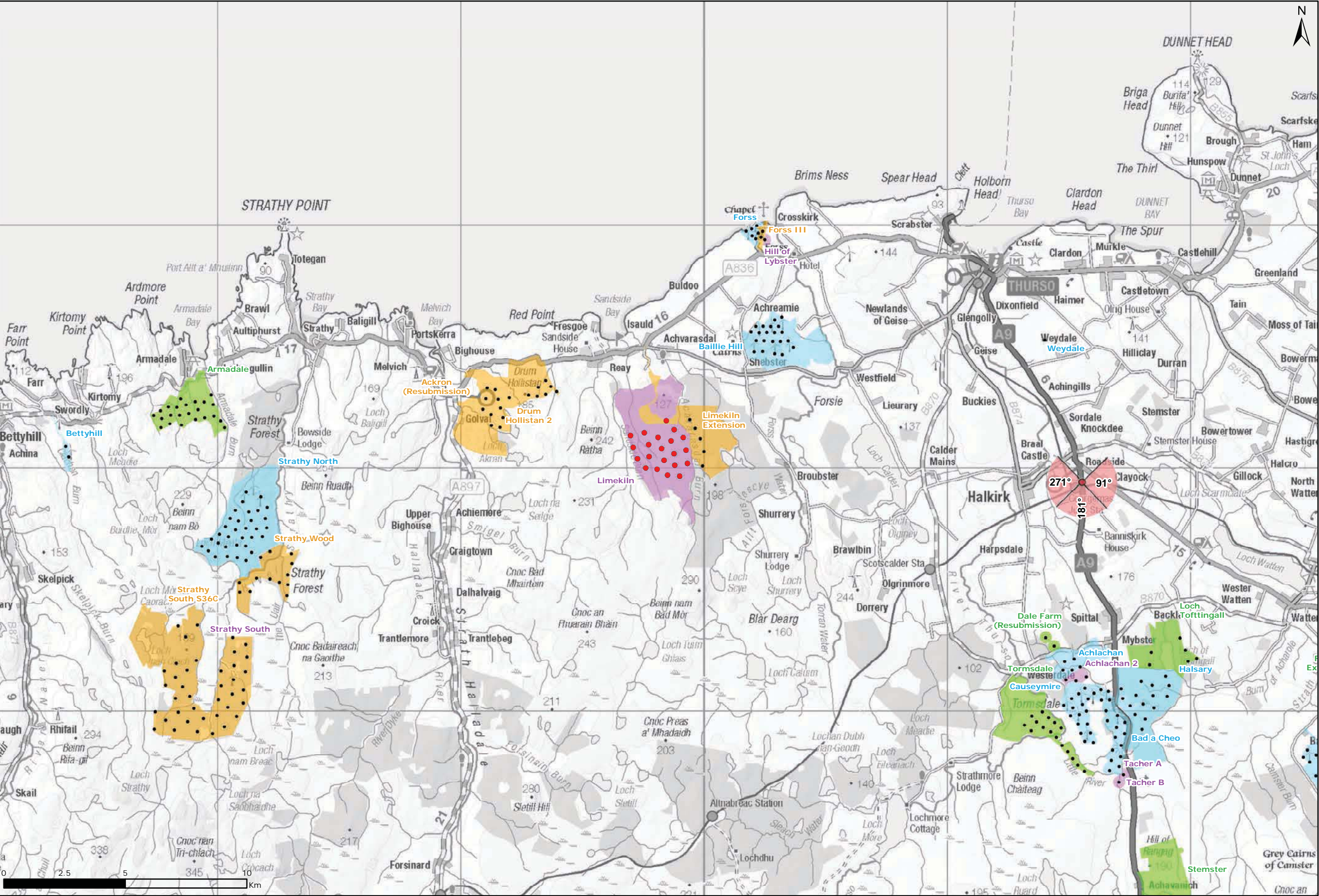
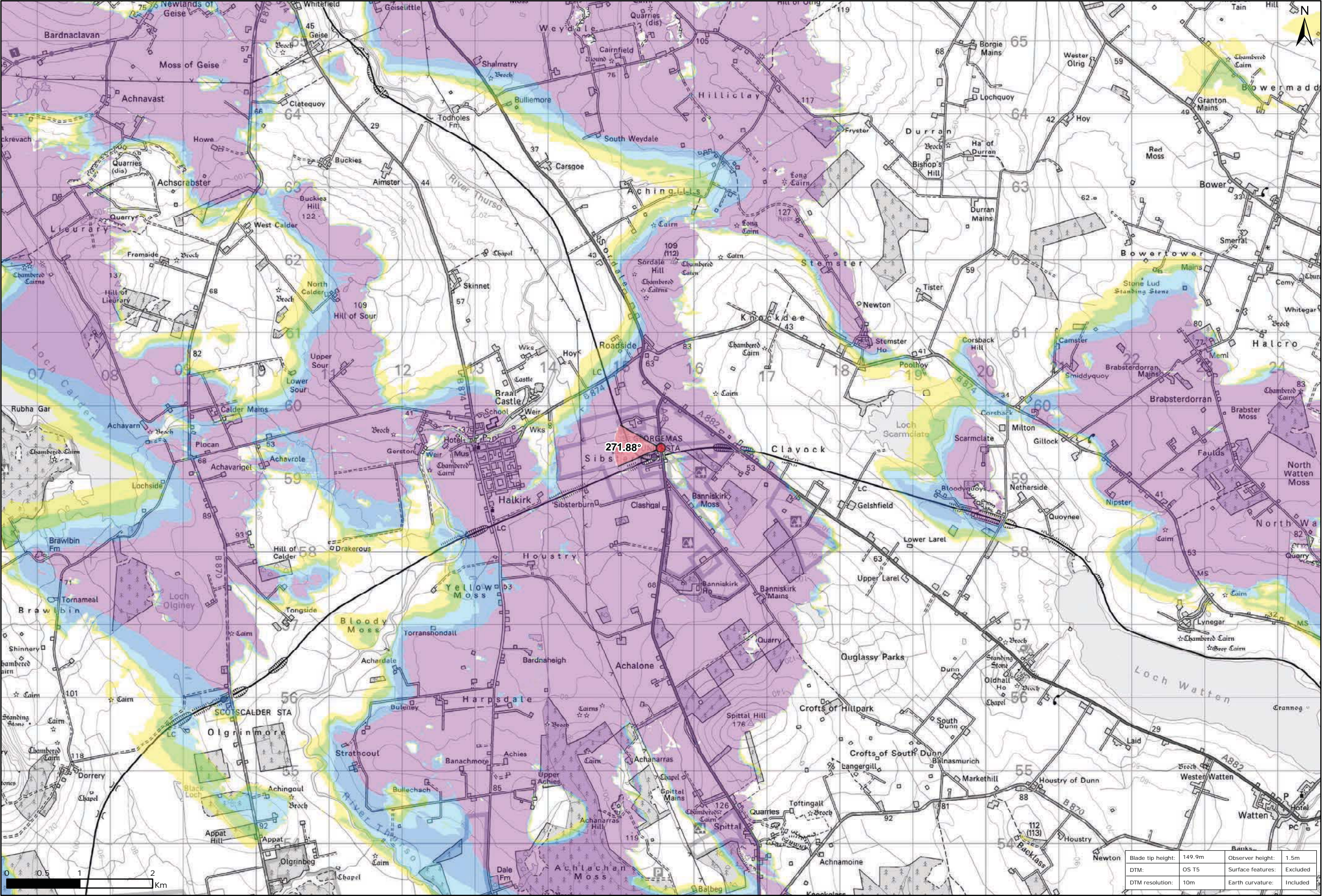


Figure 9.47a: Viewpoint 11: Georgemas Junction Station



Viewpoint Location Plan Baseline Panorama
Scale: 1:150,000



Viewpoint Location Plan
Scale: 1:50,000 (Blade Tip ZTV)

Legend:

- Proposed
- 90 degree field of view viewpoint
- 53.5 degree field of view viewpoint
- Viewpoint with no Photomontage View
- Wind Farm Status (1:150,000 only):
 - Turbine Locations
 - Operational / Under Construction
 - Consented
 - Application
 - Scoping
- Blade Tip ZTV
- No. of Theoretically Visible Turbines
 - 1 - 4
 - 5 - 8
 - 9 - 12
 - 13 - 16
 - 17 - 20
 - 21 - 24

Title:
Viewpoint 11: Georgemas Junction Station

Source:
Crown copyright and database rights 2021 Ordnance Survey 0100031673

Client:
Infenergy

Drawn by:
TH

Checked:
JP

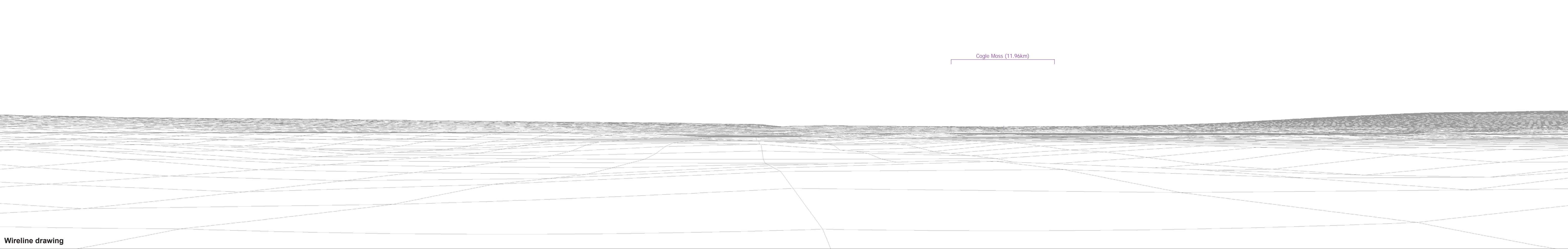
Date:
15/06/2021

Figure:
9.47a

Scale:
Multiple

Revision No:
0

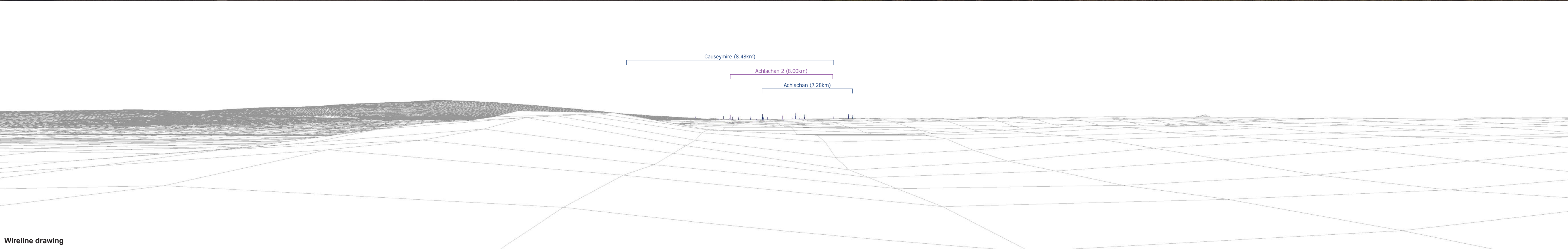
INFINERGY





Baseline photograph

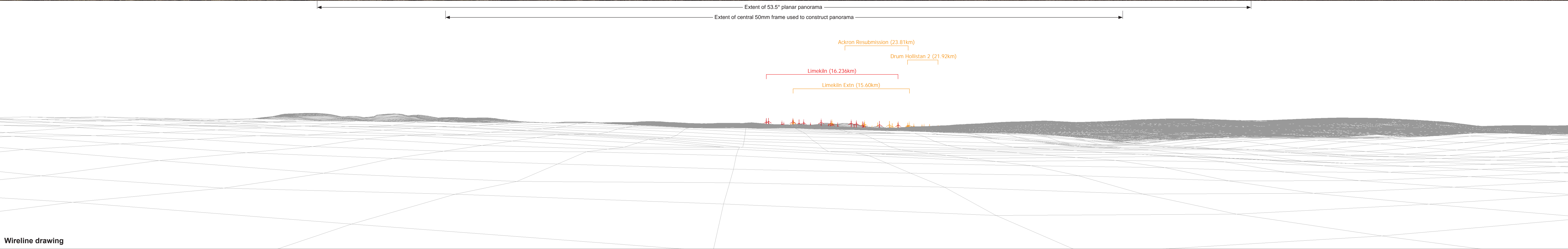
This image provides landscape and visual context only

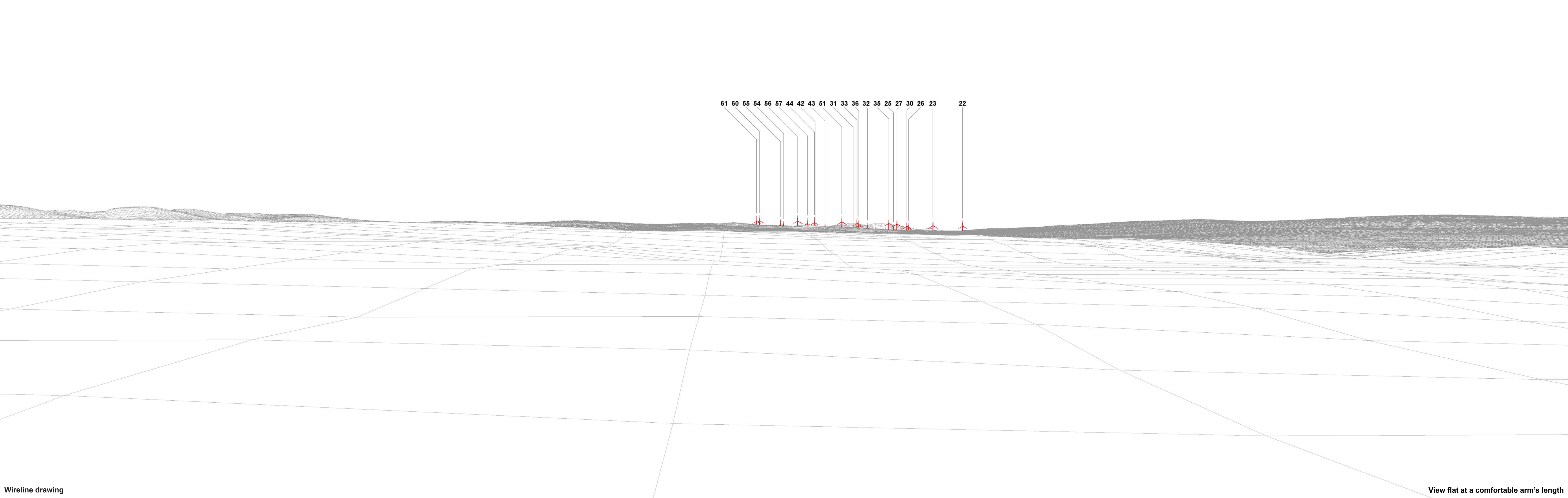


Wireline drawing

OS reference:	315546 E 959421 N	Horizontal field of view:	90° (cylindrical projection)	Camera:	Canon EOS 6D
Eye level:	50.4 m AOD	Principal distance:	522 mm	Lens:	50mm (Canon EF 50mm f/1.4)
Direction of view:	182°			Camera height:	1.5 m AGL
Nearest turbine:	16.236 km			Date and time:	17/03/16, 14:35

Figure: 9.47c
NS Viewpoint 11: Georgemas Junction Station







Photomontage

View flat at a comfortable arm's length

OS reference:	315546 E 959421 N	Horizontal field of view:	53.5° (planar projection)	Camera:	Canon EOS 6D	Figure: 9.47f NS Viewpoint 11: Georgemas Junction Station
Eye level:	50.4 m AOD	Principal distance	812.5 mm	Lens:	50mm (Canon EF 50mm f/1.4)	
Direction of view:	272°	Paper size:	841 x 297 mm (half A1)	Camera height:	1.5 m AGL	
Nearest turbine:	16.236 km	Correct printed image size:	820 x 260 mm	Date and time:	17/03/16, 14:35	