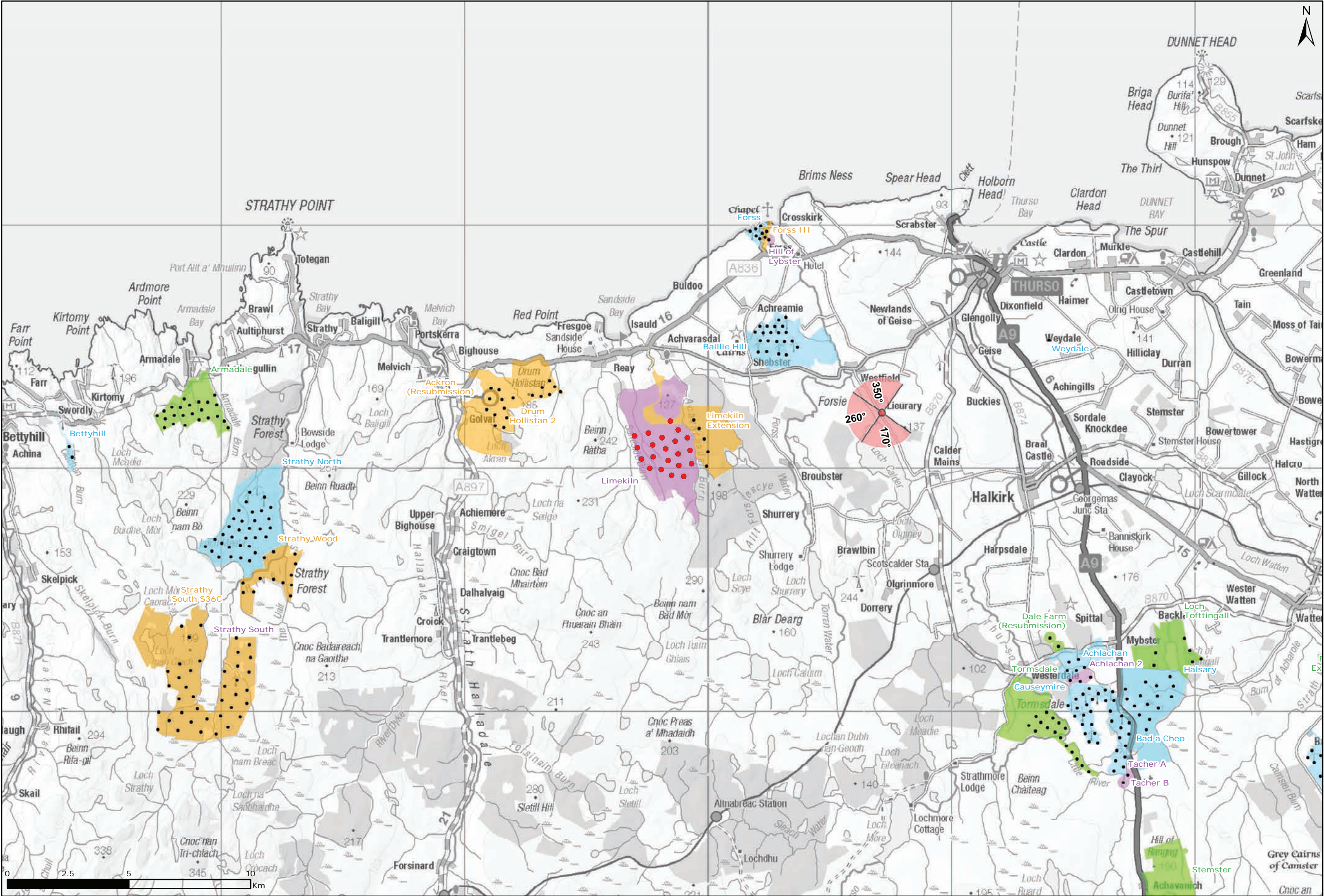
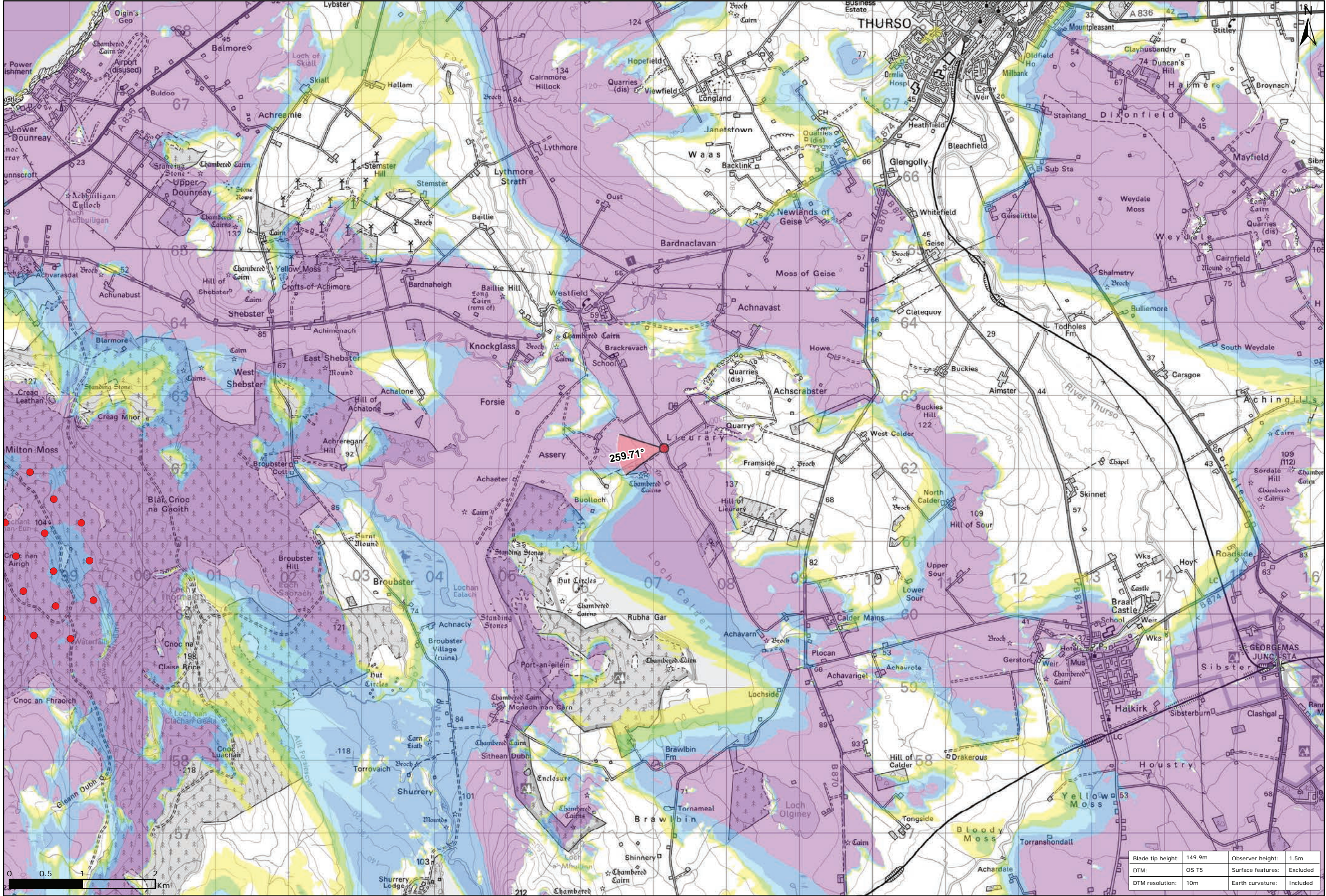


Figure 9.44a: Viewpoint 8: Angler's Car Park, Loch Calder



Viewpoint Location Plan Baseline Panorama
Scale: 1:150,000



Viewpoint Location Plan
Scale: 1:50,000 (Blade Tip ZTV)

Legend:

- Proposed
- 90 degree field of view viewpoint
- 53.5 degree field of view viewpoint
- Viewpoint with no Photomontage View

Wind Farm Status (1:150,000 only):

- Turbine Locations
- Operational / Under Construction
- Consented
- Application
- Scoping

Blade Tip ZTV

No. of Theoretically Visible Turbines

- 1 - 4
- 5 - 8
- 9 - 12
- 13 - 16
- 17 - 20
- 21 - 24

Title:
Viewpoint 8: Angler's Car Park, Loch Calder

Limekiln Wind Farm S36C

Source:
© Crown copyright and database rights
2021 Ordnance Survey 0100031673

Client:
Infinergy

Drawn by:
TH

Checked:
JP

Date:
15/06/2021

Figure:
9.44a

Scale:
Multiple

Revision No:
0

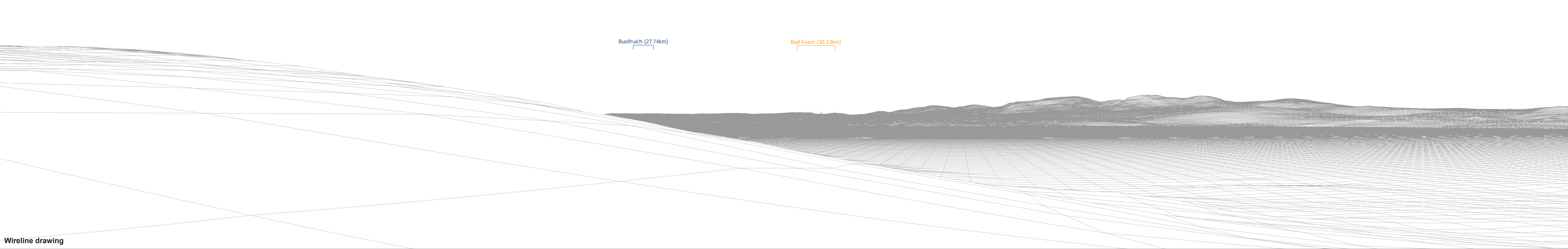
Blade tip height:	149.9m	Observer height:	1.5m
DTM:	OS T5	Surface features:	Excluded
DTM resolution:	10m	Earth curvature:	Included

INFINERGY



Baseline photograph

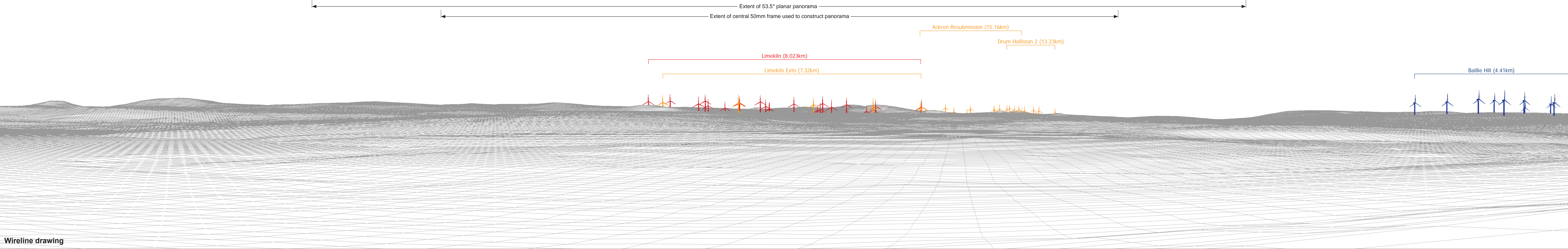
This image provides landscape and visual context only



Wireline drawing

OS reference:	307144 E 962277 N	Horizontal field of view:	90° (cylindrical projection)	Camera:	Canon EOS 5D Mark II
Eye level:	87.4 m AOD	Principal distance	522 mm	Lens:	50mm (Canon EF 50mm f/1.4)
Direction of view:	170°			Camera height:	1.5 m AGL
Nearest turbine:	8.020 km			Date and time:	12/04/21, 13:04

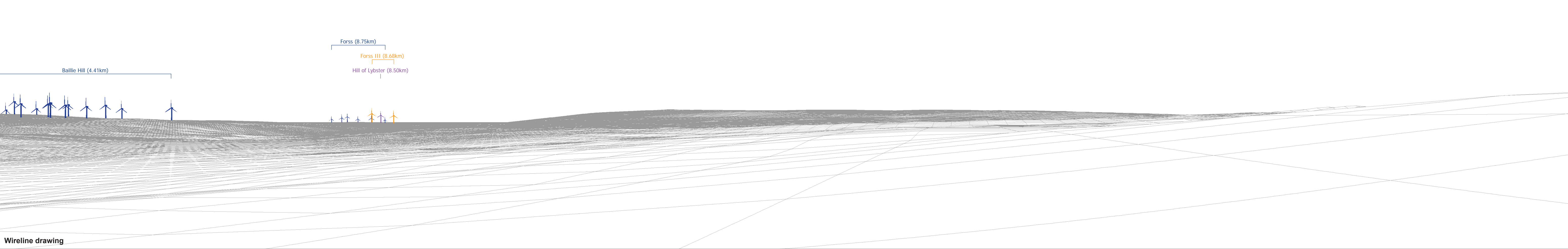
Figure: 9.44b
NS Viewpoint 8: Angler's Car Park, Loch Calder





Baseline photograph

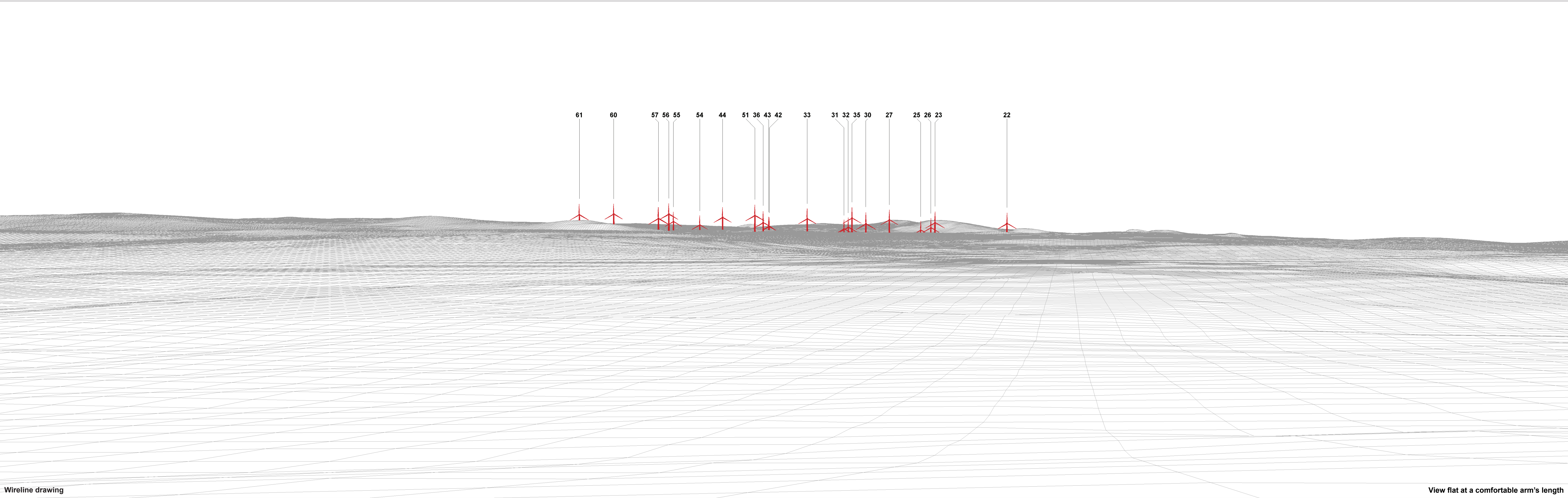
This image provides landscape and visual context only



Wireline drawing

OS reference:	307144 E 962277 N	Horizontal field of view:	90° (cylindrical projection)	Camera:	Canon EOS 5D Mark II
Eye level:	87.4 m AOD	Principal distance:	522 mm	Lens:	50mm (Canon EF 50mm f/1.4)
Direction of view:	350°			Camera height:	1.5 m AGL
Nearest turbine:	8.020 km			Date and time:	12/04/21, 13:04

Figure: 9.44d
NS Viewpoint 8: Angler's Car Park, Loch Calder



Wireline drawing

View flat at a comfortable arm's length

OS reference:	307144 E 962277 N	Horizontal field of view:	53.5° (planar projection)	Camera:	Canon EOS 5D Mark II
Eye level:	87.4 m AOD	Principal distance	812.5 mm	Lens:	50mm (Canon EF 50mm f/1.4)
Direction of view:	260°	Paper size:	841 x 297 mm (half A1)	Camera height:	1.5 m AGL
Nearest turbine:	8.020 km	Correct printed image size:	820 x 260 mm	Date and time:	12/04/21, 13:04

Figure: 9.44e
NS Viewpoint 8: Angler's Car Park, Loch Calder



Photomontage

View flat at a comfortable arm's length

OS reference:	307144 E 962277 N	Horizontal field of view:	53.5° (planar projection)	Camera:	Canon EOS 5D Mark II	Figure: 9.44f
Eye level:	87.4 m AOD	Principal distance	812.5 mm	Lens:	50mm (Canon EF 50mm f/1.4)	NS Viewpoint 8: Angler's Car Park, Loch Calder
Direction of view:	260°	Paper size:	841 x 297 mm (half A1)	Camera height:	1.5 m AGL	
Nearest turbine:	8.020 km	Correct printed image size:	820 x 260 mm	Date and time:	12/04/21, 13:04	