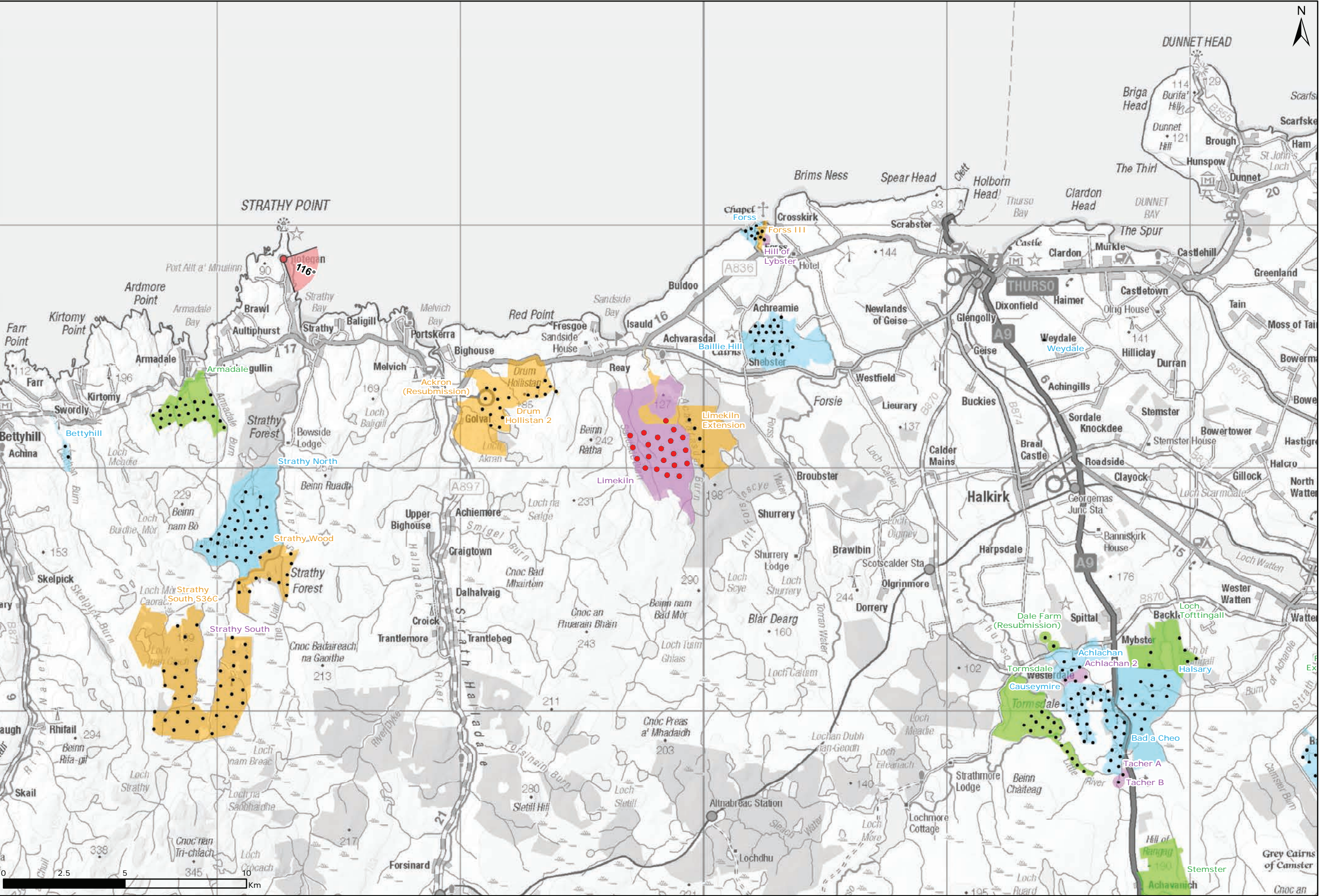
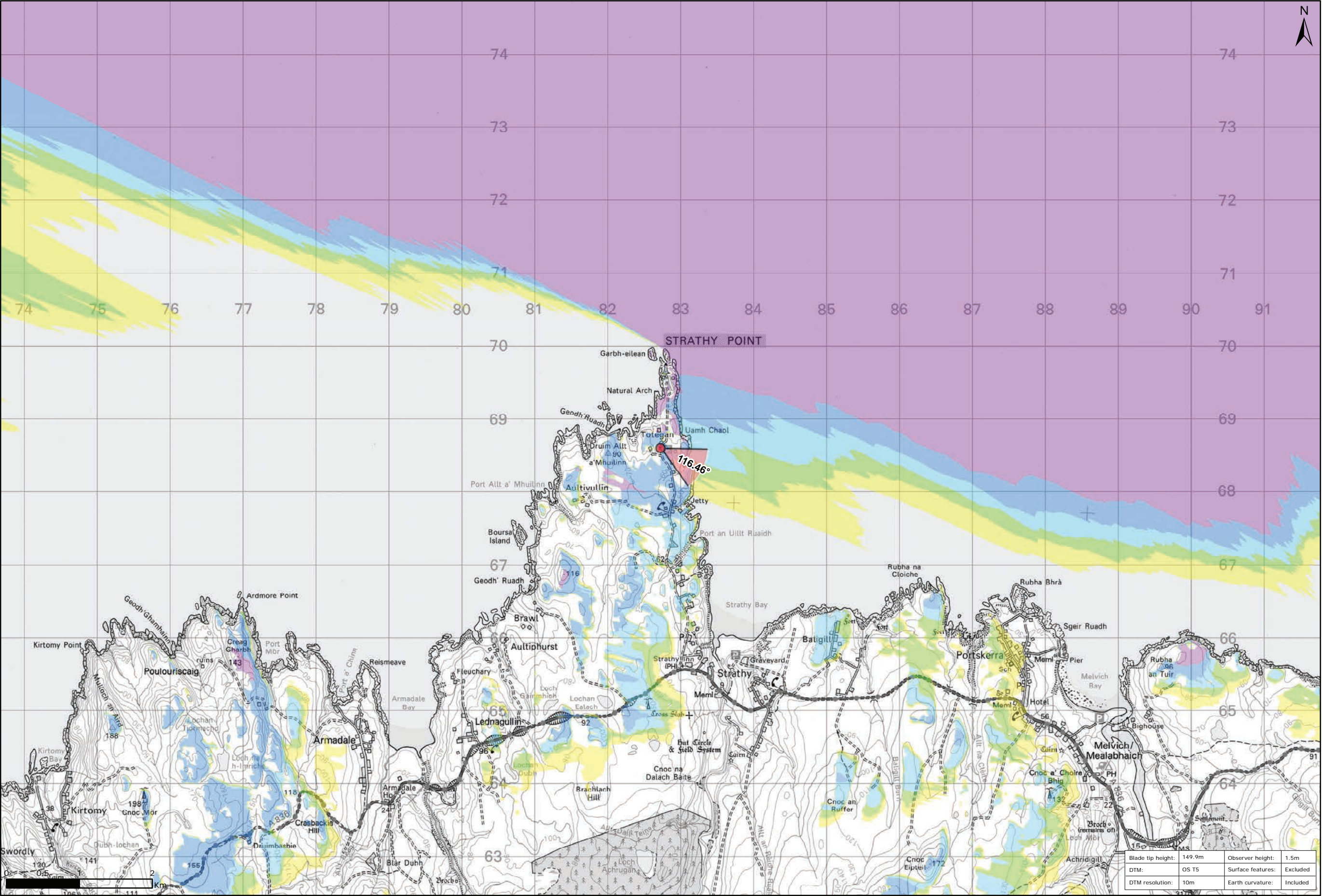


Figure 9.43a: Viewpoint 7: Strathy Point Car Park



Viewpoint Location Plan Baseline Panorama
Scale: 1:150,000

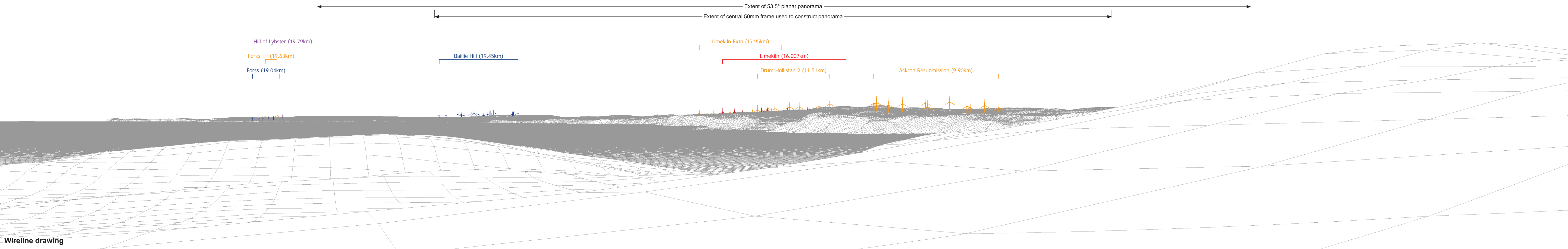


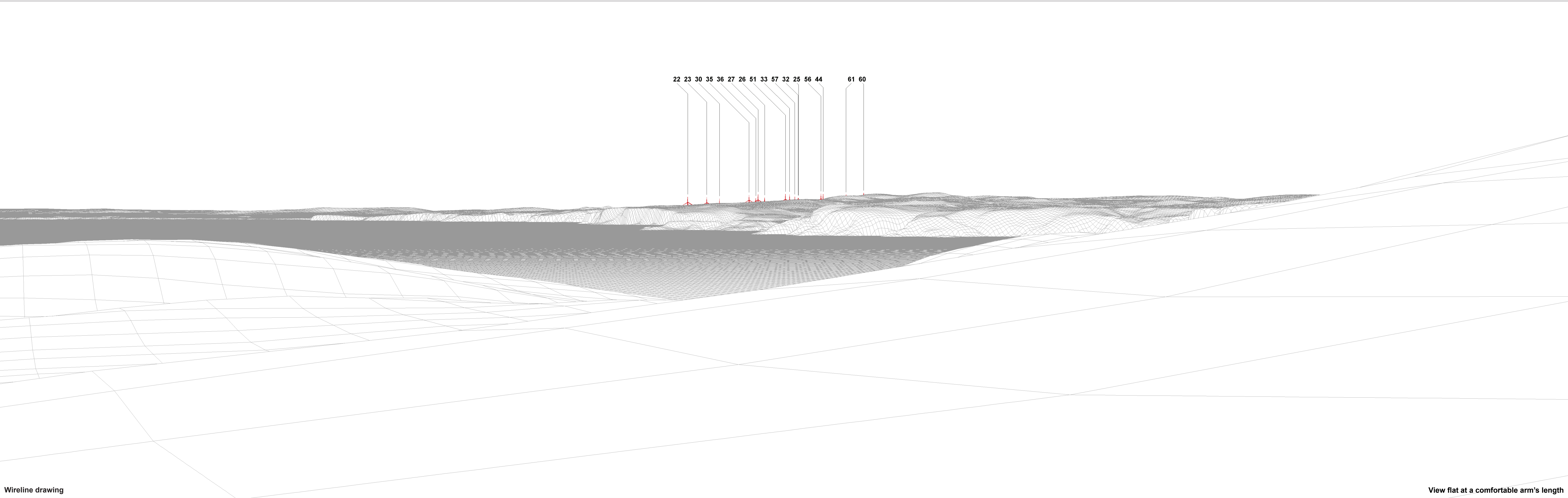
Viewpoint Location Plan
Scale: 1:50,000 (Blade Tip ZTV)



Baseline photograph

This image provides landscape and visual context only





Wireline drawing

View flat at a comfortable arm's length

OS reference:	282724 E 968602 N	Horizontal field of view:	53.5° (planar projection)	Camera:	Canon EOS 5D Mark II
Eye level:	61.17 m AOD	Principal distance	812.5 mm	Lens:	50mm (Canon EF 50mm f/1.4)
Direction of view:	116.46°	Paper size:	841 x 297 mm (half A1)	Camera height:	1.5 m AGL
Nearest turbine:	16.007 km	Correct printed image size:	820 x 260 mm	Date and time:	09/05/12, 18:51

Figure: 9.43c
NS Viewpoint 7: Strathy Point Car Park



Photomontage

View flat at a comfortable arm's length

OS reference:	282724 E 968602 N	Horizontal field of view:	53.5° (planar projection)	Camera:	Canon EOS 5D Mark II	Figure: 9.43d NS Viewpoint 7: Strathy Point Car Park <small>© Crown copyright and database rights 2021 Ordnance Survey 0100031673</small>
Eye level:	61.17 m AOD	Principal distance	812.5 mm	Lens:	50mm (Canon EF 50mm f/1.4)	
Direction of view:	116.46°	Paper size:	841 x 297 mm (half A1)	Camera height:	1.5 m AGL	
Nearest turbine:	16.007 km	Correct printed image size:	820 x 260 mm	Date and time:	09/05/12, 18:51	