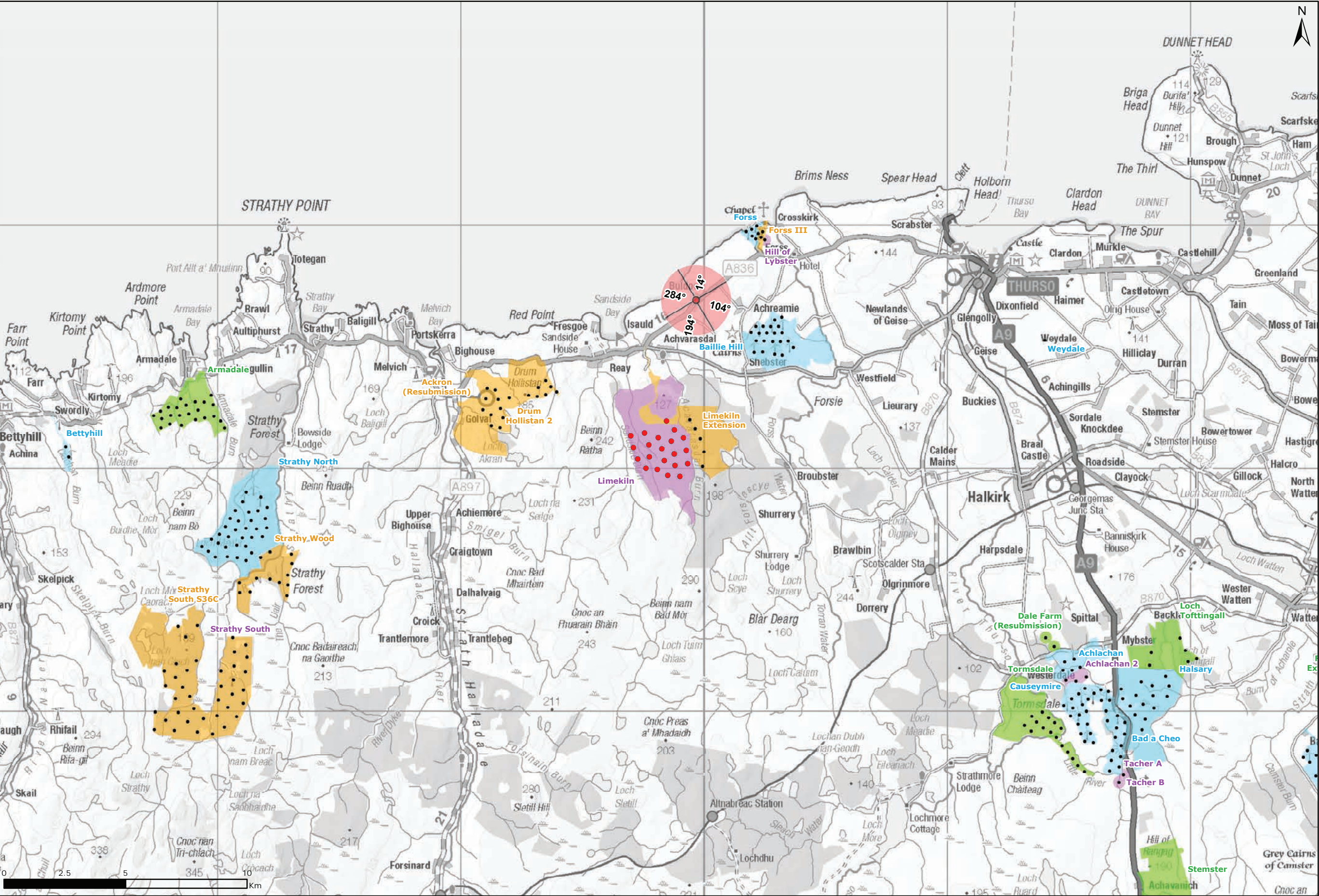
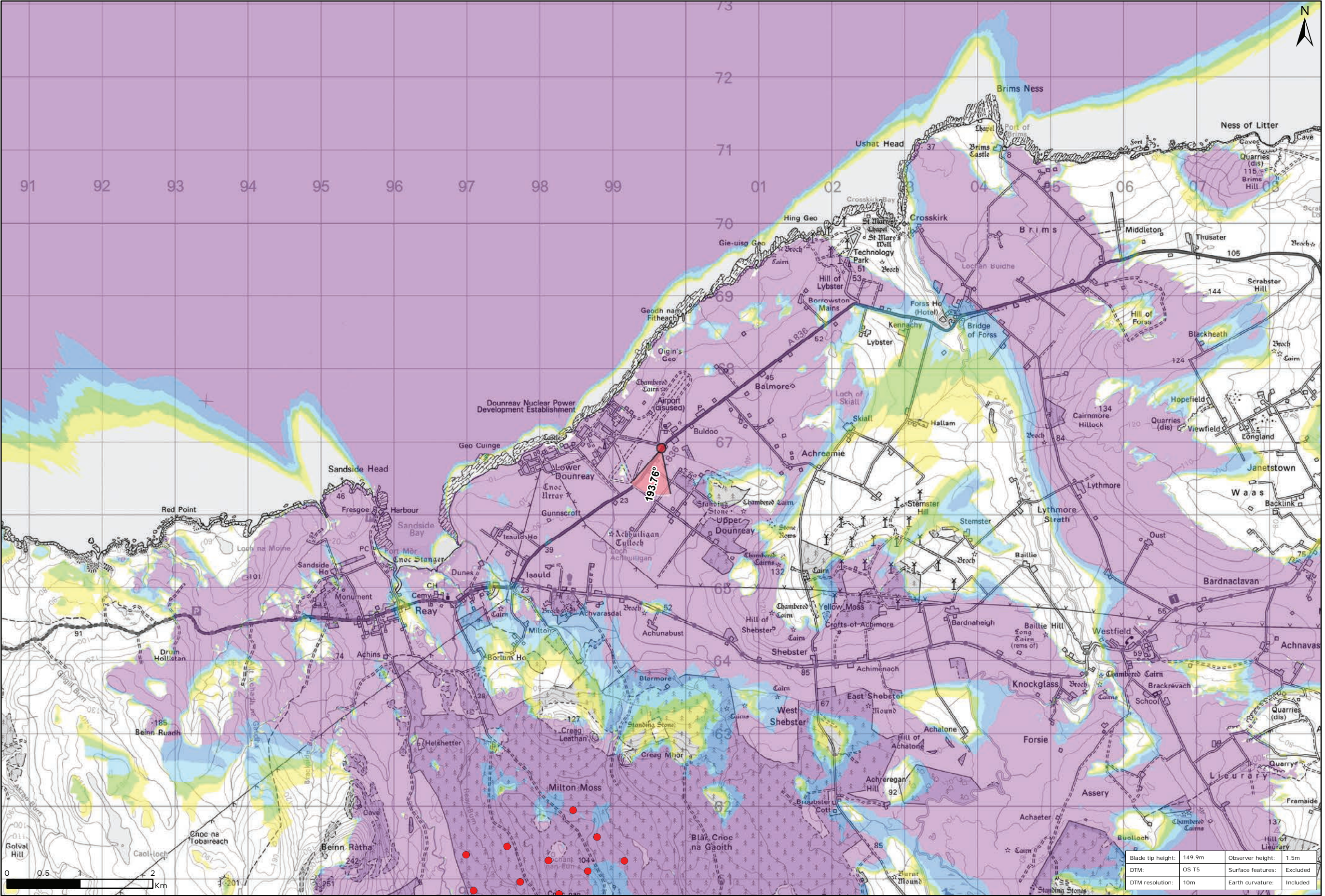


Figure 9.42a: Viewpoint 6: A836, Dounreay Road Junction



Viewpoint Location Plan Baseline Panorama
Scale: 1:150,000



Viewpoint Location Plan
Scale: 1:50,000 (Blade Tip ZTV)

Legend:

- Proposed
- 90 degree field of view viewpoint
- 53.5 degree field of view viewpoint
- Viewpoint with no Photomontage View

Wind Farm Status (1:150,000 only):

- Turbine Locations
- Operational / Under Construction
- Consented
- Application
- Scoping

Blade Tip ZTV

No. of Theoretically Visible Turbines

- 1 - 4
- 5 - 8
- 9 - 12
- 13 - 16
- 17 - 20
- 21 - 24

Title:
Viewpoint 6: A836, Dounreay Road Junction

Source:
© Crown copyright and database rights 2021. Ordnance Survey 0100031673.

Client:
Infinergy

Drawn by:
TH

Checked:
JP

Date:
15/06/2021

Figure:
9.42a

Scale:
Multiple

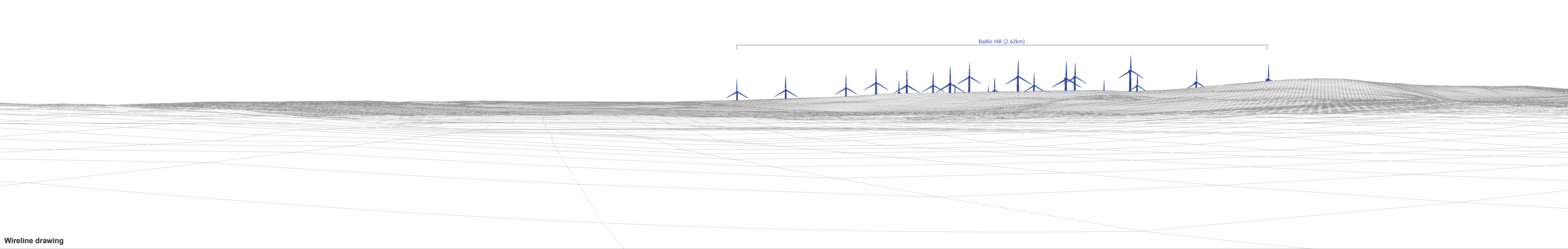
Revision No:
0

INFINERGY



Baseline photograph

This image provides landscape and visual context only



Wireline drawing

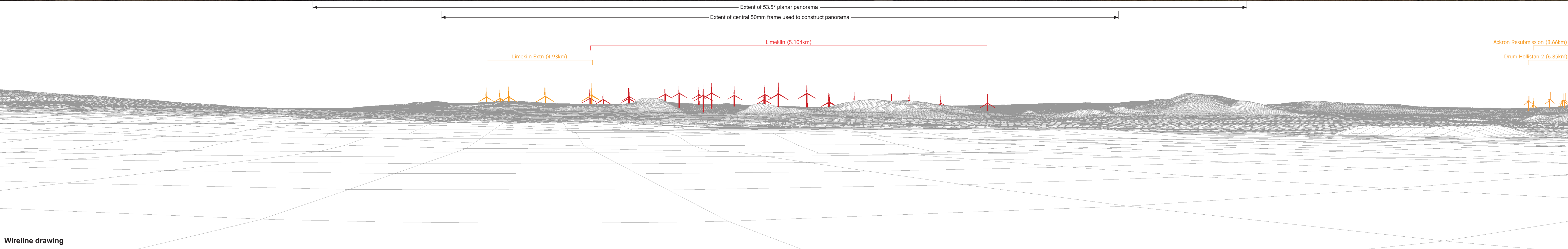
OS reference:	299664 E 966911 N	Horizontal field of view:	90° (cylindrical projection)	Camera:	Canon EOS 5D Mark II
Eye level:	32.11 m AOD	Principal distance	522 mm	Lens:	50mm (Canon EF 50mm f/1.4)
Direction of view:	104°			Camera height:	1.5 m AGL
Nearest turbine:	5.104 km			Date and time:	13/04/21, 09:30

Figure: 9.42b
NS Viewpoint 6: A836, Dounreay Road Junction



Baseline photograph

This image provides landscape and visual context only

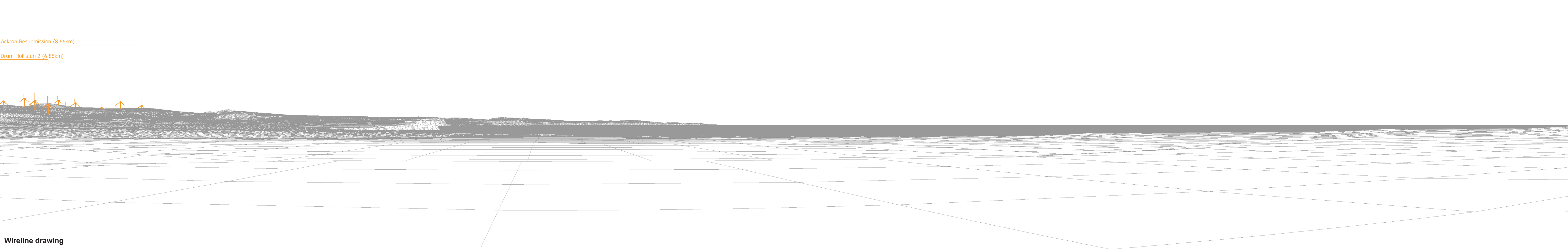


Wireline drawing



Baseline photograph

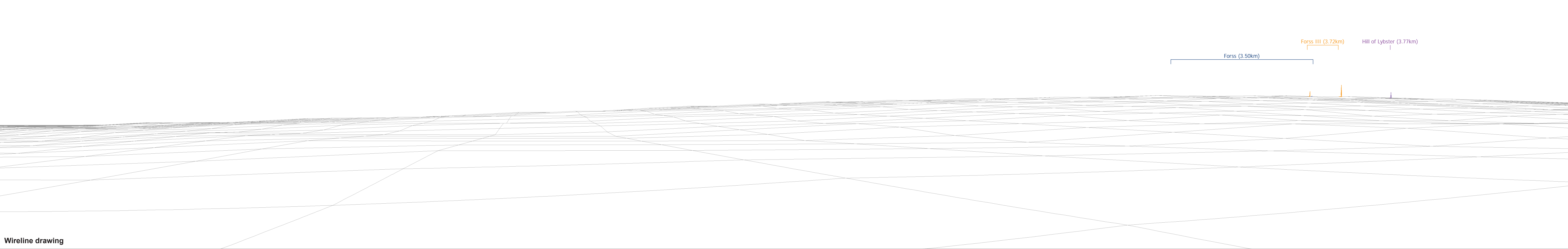
This image provides landscape and visual context only





Baseline photograph

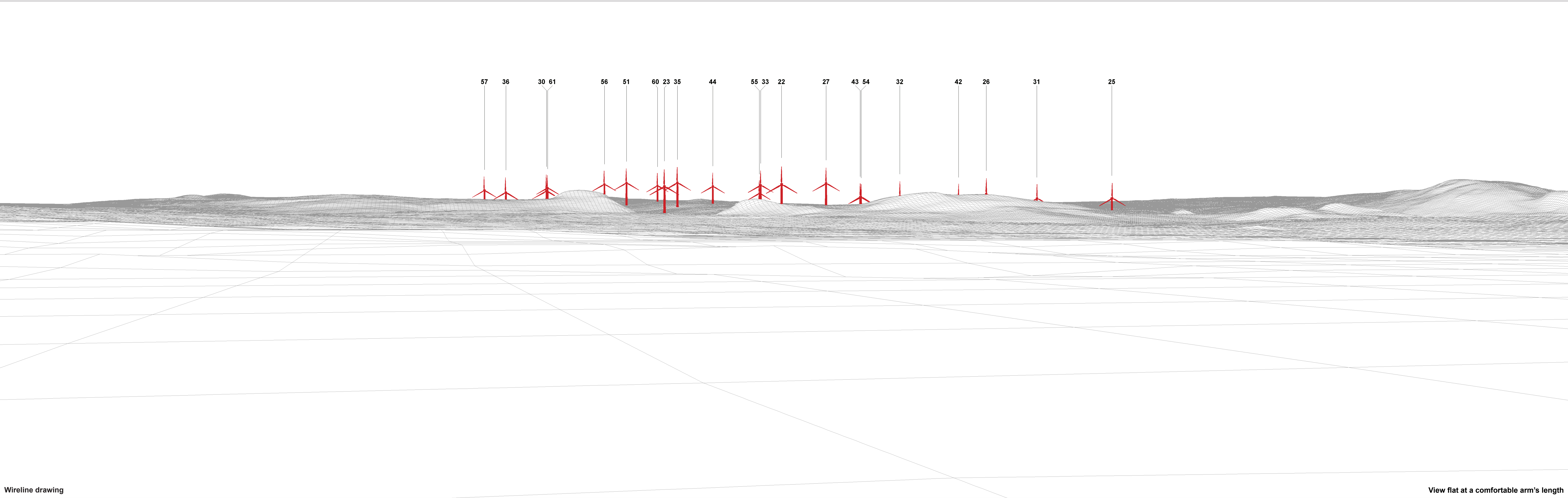
This image provides landscape and visual context only



Wireline drawing

OS reference:	299664 E 966911 N	Horizontal field of view:	90° (cylindrical projection)	Camera:	Canon EOS 5D Mark II
Eye level:	32.11 m AOD	Principal distance	522 mm	Lens:	50mm (Canon EF 50mm f/1.4)
Direction of view:	14°			Camera height:	1.5 m AGL
Nearest turbine:	5.104 km			Date and time:	13/04/21, 09:30

Figure: 9.42e
NS Viewpoint 6: A836, Dounreay Road Junction



Wireline drawing

View flat at a comfortable arm's length

OS reference:	299664 E 966911 N	Horizontal field of view:	53.5° (planar projection)	Camera:	Canon EOS 5D Mark II
Eye level:	32.11 m AOD	Principal distance	812.5 mm	Lens:	50mm (Canon EF 50mm f/1.4)
Direction of view:	194°	Paper size:	841 x 297 mm (half A1)	Camera height:	1.5 m AGL
Nearest turbine:	5.104 km	Correct printed image size:	820 x 260 mm	Date and time:	13/04/21, 09:30

Figure: 9.42f
NS Viewpoint 6: A836, Dounreay Road Junction



OS reference:	299664 E 966911 N	Horizontal field of view:	53.5° (planar projection)	Camera:	Canon EOS 5D Mark II
Eye level:	32.11 m AOD	Principal distance	812.5 mm	Lens:	50mm (Canon EF 50mm f/1.4)
Direction of view:	194°	Paper size:	841 x 297 mm (half A1)	Camera height:	1.5 m AGL
Nearest turbine:	5.104 km	Correct printed image size:	820 x 260 mm	Date and time:	13/04/21, 09:30

Figure: 9.42g
NS Viewpoint 6: A836, Dounreay Road Junction

© Crown copyright and database rights 2021 Ordnance Survey 0100031673