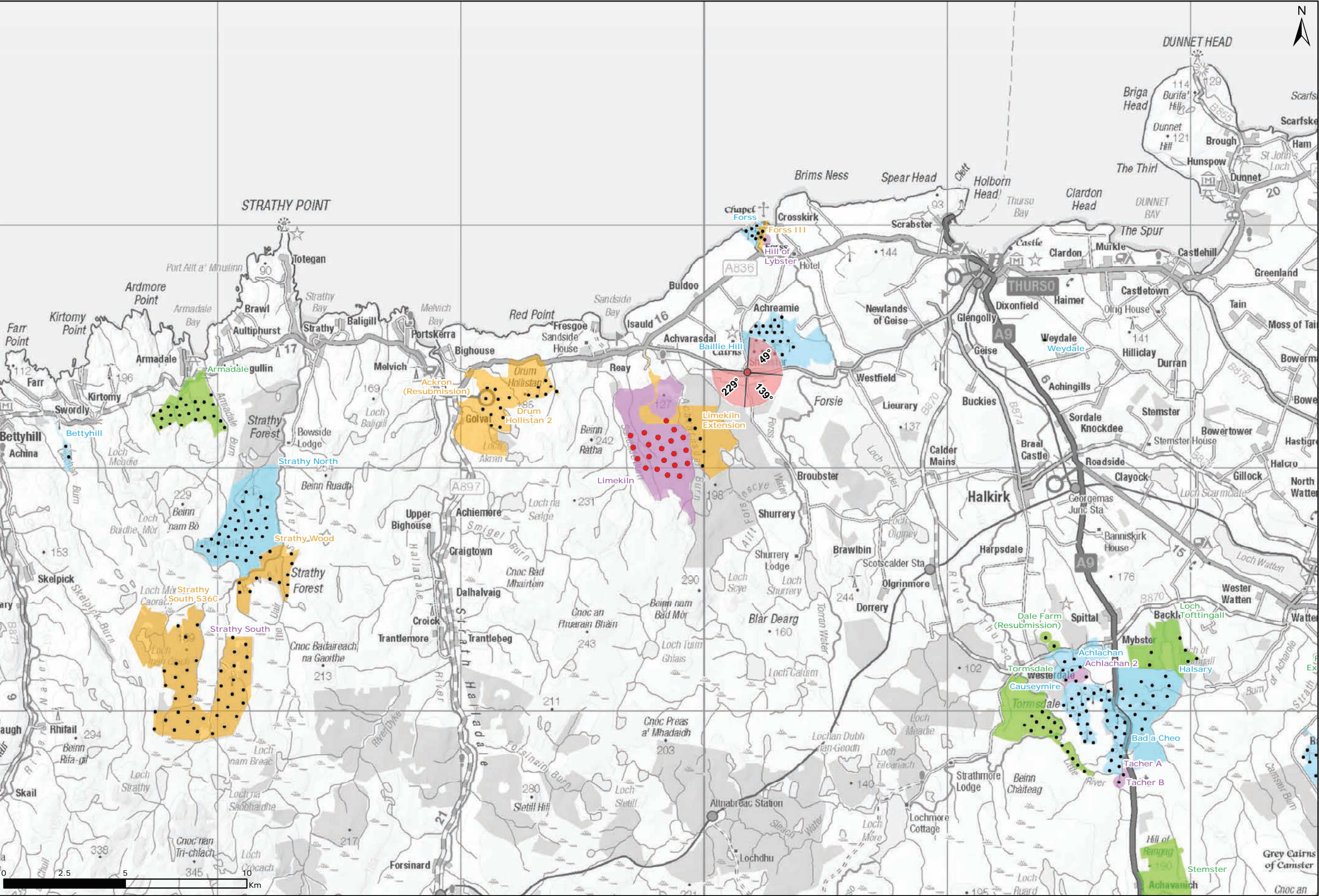
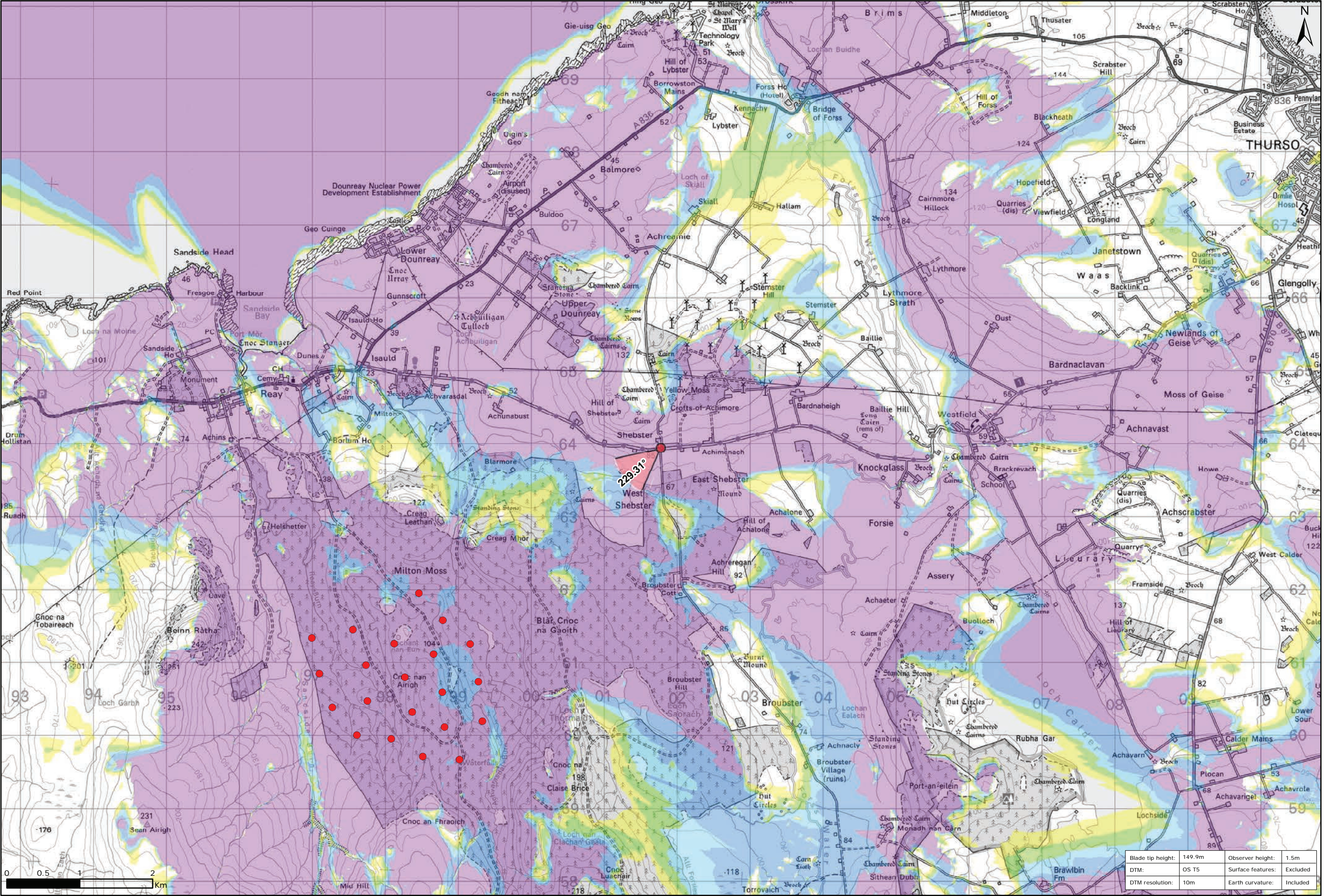


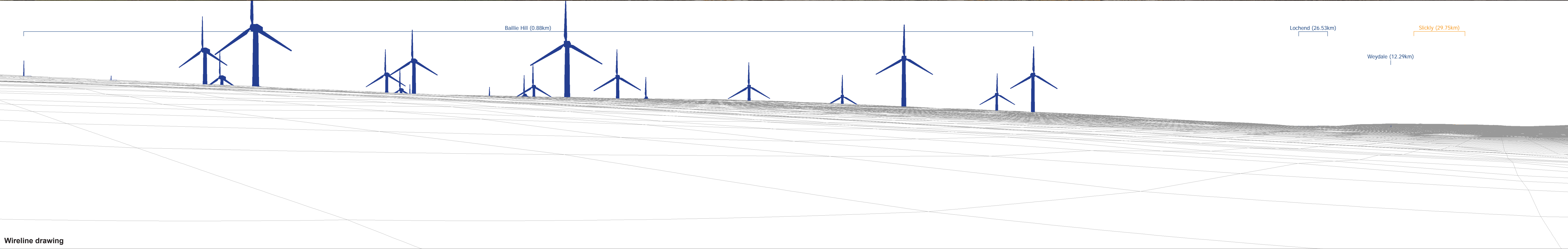
Figure 9.40a: Viewpoint 4: Shebster



Viewpoint Location Plan Baseline Panorama
Scale: 1:150,000



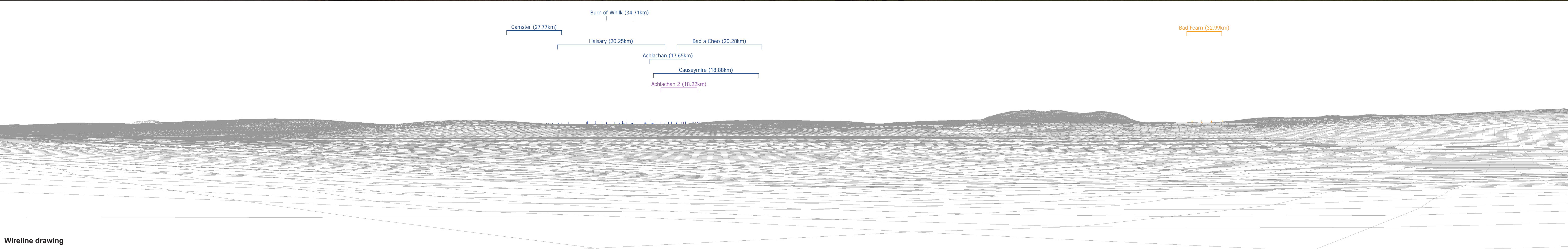
Viewpoint Location Plan
Scale: 1:50,000 (Blade Tip ZTV)





Baseline photograph

This image provides landscape and visual context only



Wireline drawing

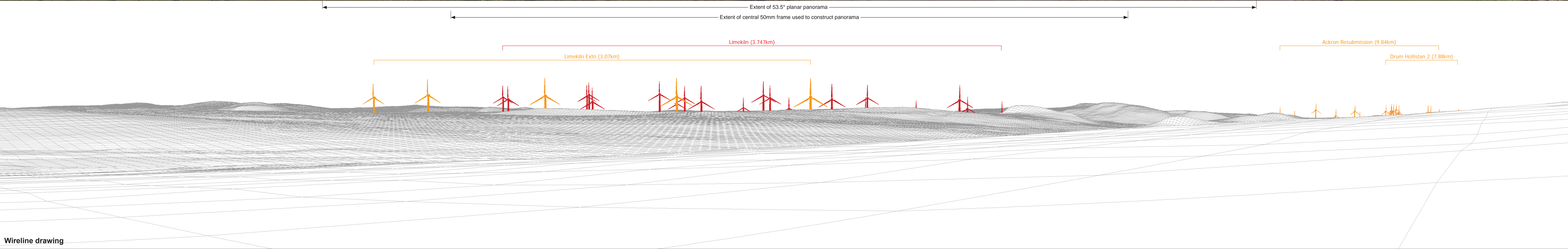
OS reference:	301776 E 963941 N	Horizontal field of view:	90° (cylindrical projection)	Camera:	Canon EOS 5D Mark II
Eye level:	83.18 m AOD	Principal distance	522 mm	Lens:	50mm (Canon EF 50mm f/1.4)
Direction of view:	139°			Camera height:	1.5 m AGL
Nearest turbine:	3.747 km			Date and time:	12/04/21, 14:16

Figure: 9.40c
NS Viewpoint 4: Shebster



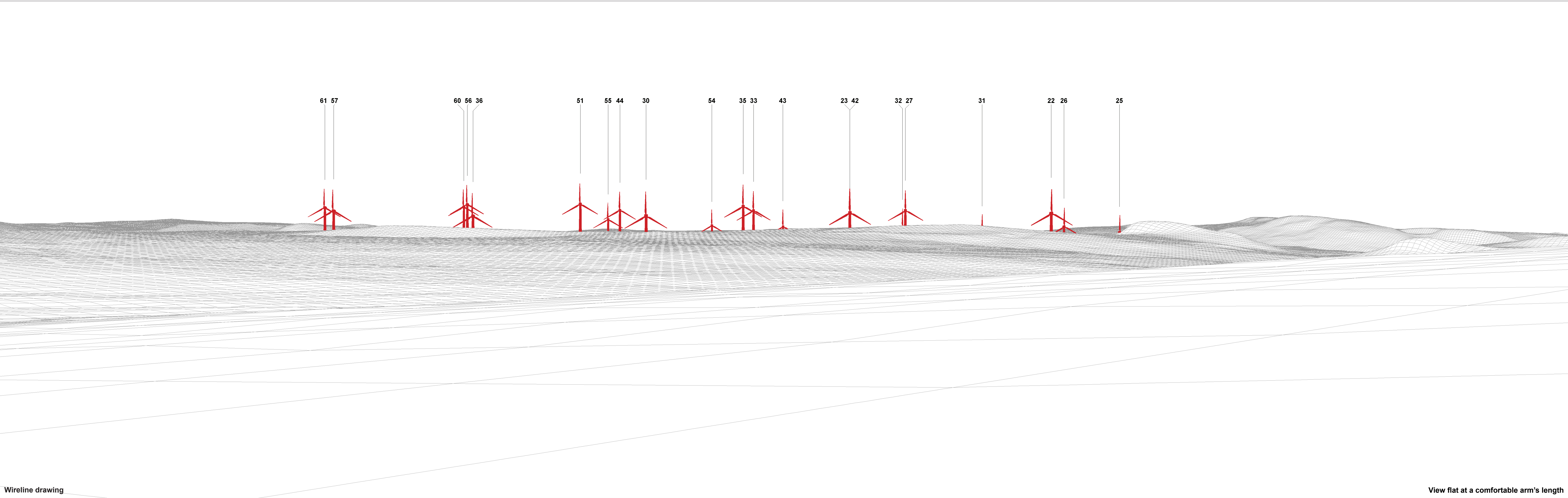
Baseline photograph

This image provides landscape and visual context only



Wireline drawing

OS reference:	301776 E 963941 N	Horizontal field of view:	90° (cylindrical projection)	Camera:	Canon EOS 5D Mark II	NOTE: Rev A - Adjustment to hub height of Drum Hollistan 2 wind turbines.	Figure: 9.40d Rev A NS Viewpoint 4: Shebster
Eye level:	83.18 m AOD	Principal distance	522 mm	Lens:	50mm (Canon EF 50mm f/1.4)		
Direction of view:	229°			Camera height:	1.5 m AGL		
Nearest turbine:	3.747 km			Date and time:	12/04/21, 14:16		



Wireline drawing

View flat at a comfortable arm's length



Photomontage

View flat at a comfortable arm's length

OS reference:	301776 E 963941 N	Horizontal field of view:	53.5° (planar projection)	Camera:	Canon EOS 5D Mark II
Eye level:	83.18 m AOD	Principal distance	812.5 mm	Lens:	50mm (Canon EF 50mm f/1.4)
Direction of view:	229°	Paper size:	841 x 297 mm (half A1)	Camera height:	1.5 m AGL
Nearest turbine:	3.747 km	Correct printed image size:	820 x 260 mm	Date and time:	12/04/21, 14:16

Figure: 9.40f
NS Viewpoint 4: Shebster