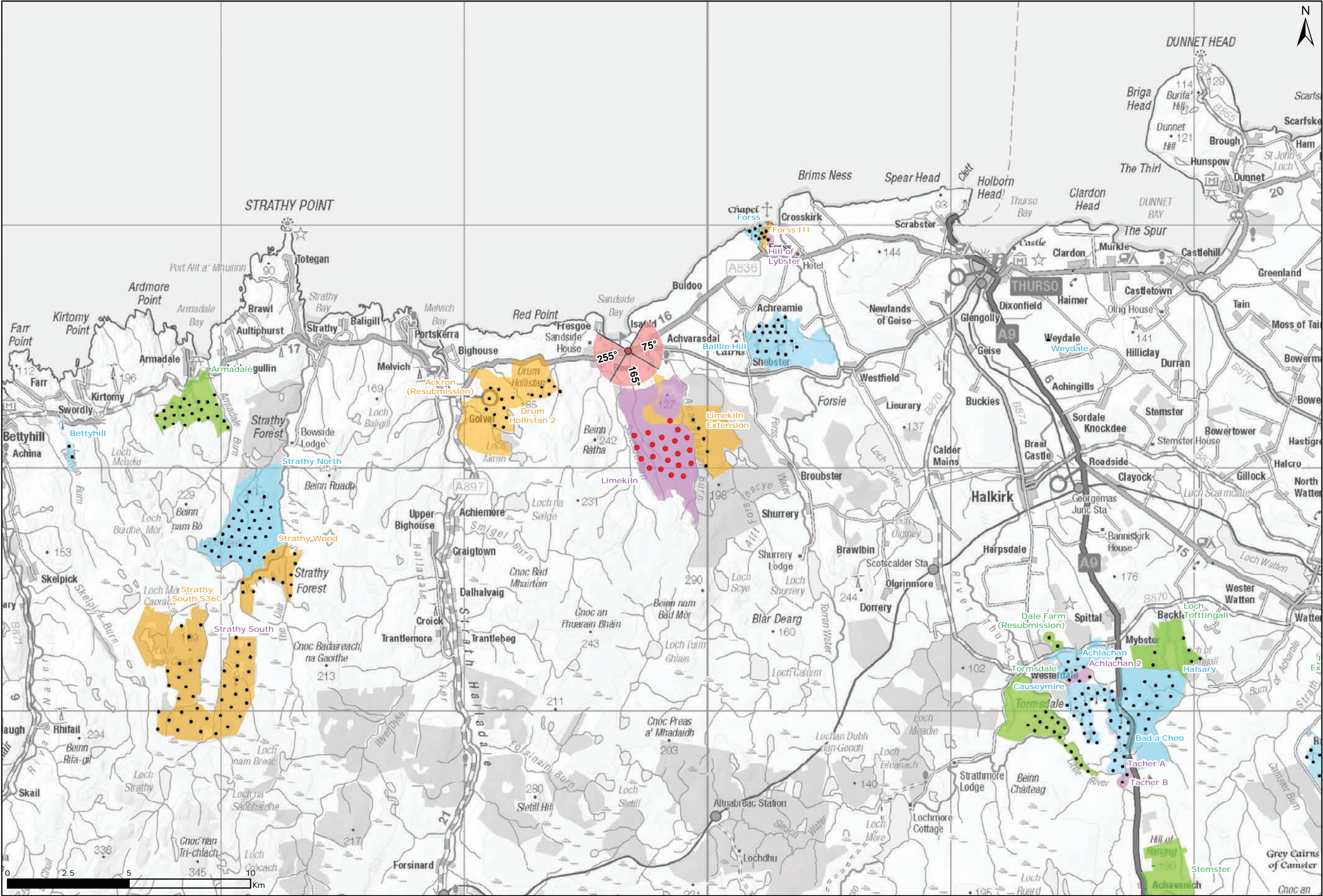
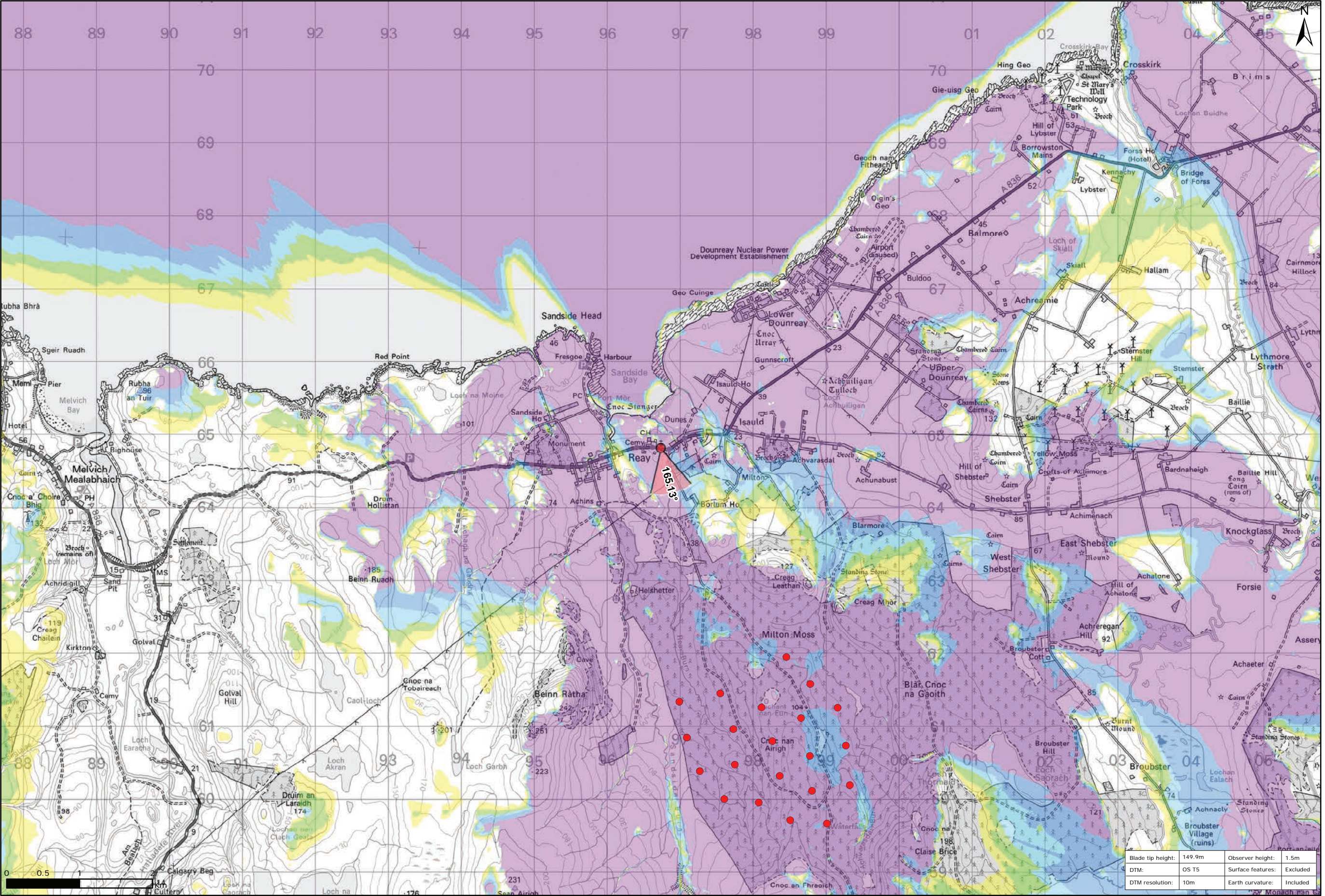


Figure 9.39a: Viewpoint 3: A836, Reay Church



Viewpoint Location Plan Baseline Panorama  
Scale: 1:150,000



Viewpoint Location Plan  
Scale: 1:50,000 (Blade Tip ZTV)

Legend:

- Proposed
- 90 degree field of view viewpoint
- 53.5 degree field of view viewpoint
- Viewpoint with no Photomontage View

Wind Farm Status (1:150,000 only):

- Turbine Locations
- Operational / Under Construction
- Consented
- Application
- Scoping

Blade Tip ZTV

No. of Theoretically Visible Turbines

- 1 - 4
- 5 - 8
- 9 - 12
- 13 - 16
- 17 - 20
- 21 - 24

Title: Viewpoint 3: A836, Reay Church

Limekiln Wind Farm S36C

Source: Crown copyright and database rights 2021 Ordnance Survey 0100031673

Client: Infinergy

Drawn by: TH

Checked: JP

Date: 15/06/2021

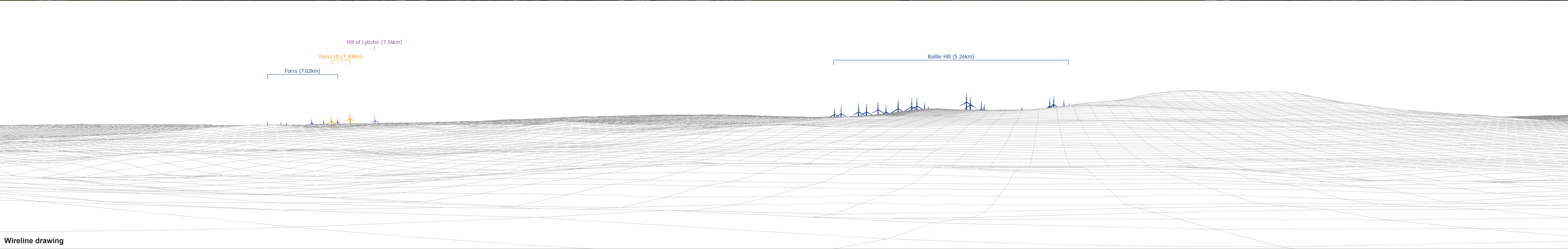
Figure: 9.39a

Scale: Multiple

Revision No: 0

INFINERGY



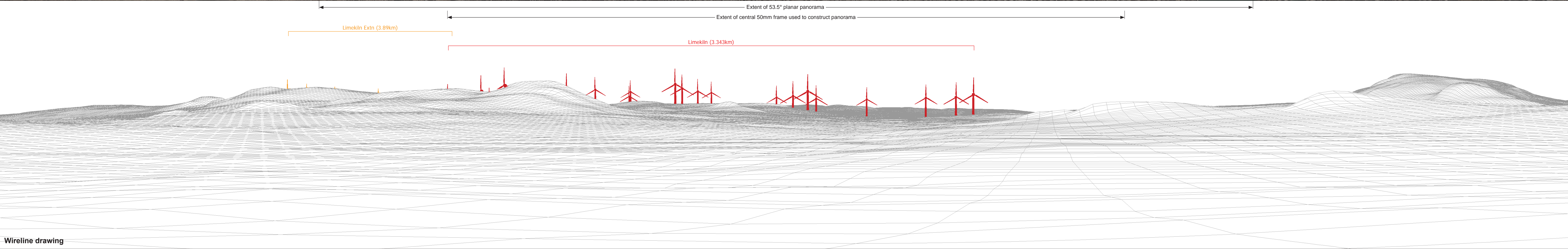






Baseline photograph

This image provides landscape and visual context only



OS reference:	296735 E 964816 N	Horizontal field of view:	90° (cylindrical projection)	Camera:	Canon EOS 5D Mark II
Eye level:	20.75 m AOD	Principal distance	522 mm	Lens:	50mm (Canon EF 50mm f/1.4)
Direction of view:	165°			Camera height:	1.5 m AGL
Nearest turbine:	3.343 km			Date and time:	12/04/21, 11:02

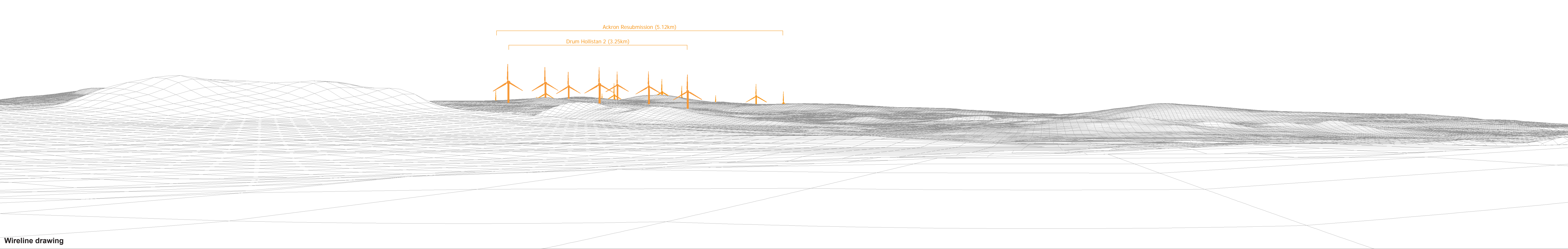
Figure: 9.39c  
NS Viewpoint 3: A836, Reay Church





Baseline photograph

This image provides landscape and visual context only



Wireline drawing

OS reference: 296735 E 964816 N  
Eye level: 20.75 m AOD  
Direction of view: 255°  
Nearest turbine: 3.343 km

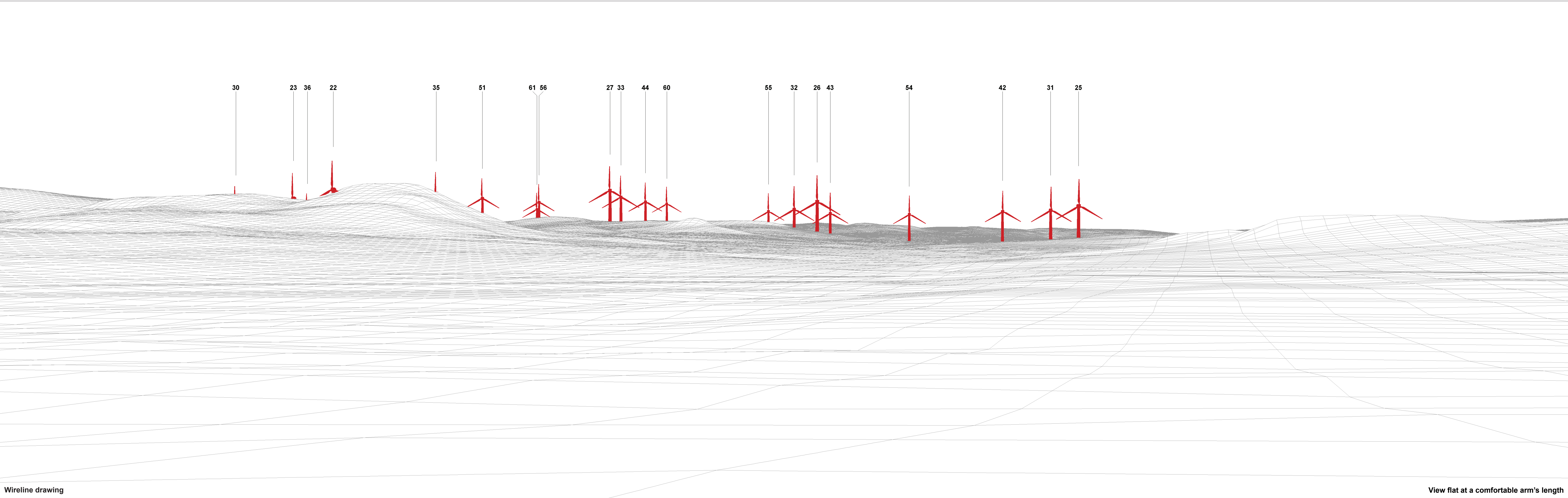
Horizontal field of view: 90° (cylindrical projection)  
Principal distance: 522 mm

Camera: Canon EOS 5D Mark II  
Lens: 50mm (Canon EF 50mm f/1.4)  
Camera height: 1.5 m AGL  
Date and time: 12/04/21, 11:02

NOTE: Rev A - Adjustment to hub height of Drum Hollistan 2 wind turbines.

Figure: 9.39d Rev A  
NS Viewpoint 3: A836, Reay Church





Wireline drawing

View flat at a comfortable arm's length

<b>OS reference:</b>	296735 E 964816 N	<b>Horizontal field of view:</b>	53.5° (planar projection)	<b>Camera:</b>	Canon EOS 5D Mark II	<b>Figure: 9.39e</b> <b>NS Viewpoint 3: A836, Reay Church</b>
<b>Eye level:</b>	20.75 m AOD	<b>Principal distance</b>	812.5 mm	<b>Lens:</b>	50mm (Canon EF 50mm f/1.4)	
<b>Direction of view:</b>	165°	<b>Paper size:</b>	841 x 297 mm (half A1)	<b>Camera height:</b>	1.5 m AGL	
<b>Nearest turbine:</b>	3.343 km	<b>Correct printed image size:</b>	820 x 260 mm	<b>Date and time:</b>	12/04/21, 11:02	

© Crown copyright and database rights 2021 Ordnance Survey 0100031676





<b>OS reference:</b>	296735 E 964816 N	<b>Horizontal field of view:</b>	53.5° (planar projection)	<b>Camera:</b>	Canon EOS 5D Mark II	<b>Figure: 9.39f</b> <b>NS Viewpoint 3: A836, Reay Church</b> <small>© Crown copyright and database rights 2021 Ordnance Survey 0100031673</small>
<b>Eye level:</b>	20.75 m AOD	<b>Principal distance</b>	812.5 mm	<b>Lens:</b>	50mm (Canon EF 50mm f/1.4)	
<b>Direction of view:</b>	165°	<b>Paper size:</b>	841 x 297 mm (half A1)	<b>Camera height:</b>	1.5 m AGL	
<b>Nearest turbine:</b>	3.343 km	<b>Correct printed image size:</b>	820 x 260 mm	<b>Date and time:</b>	12/04/21, 11:02	