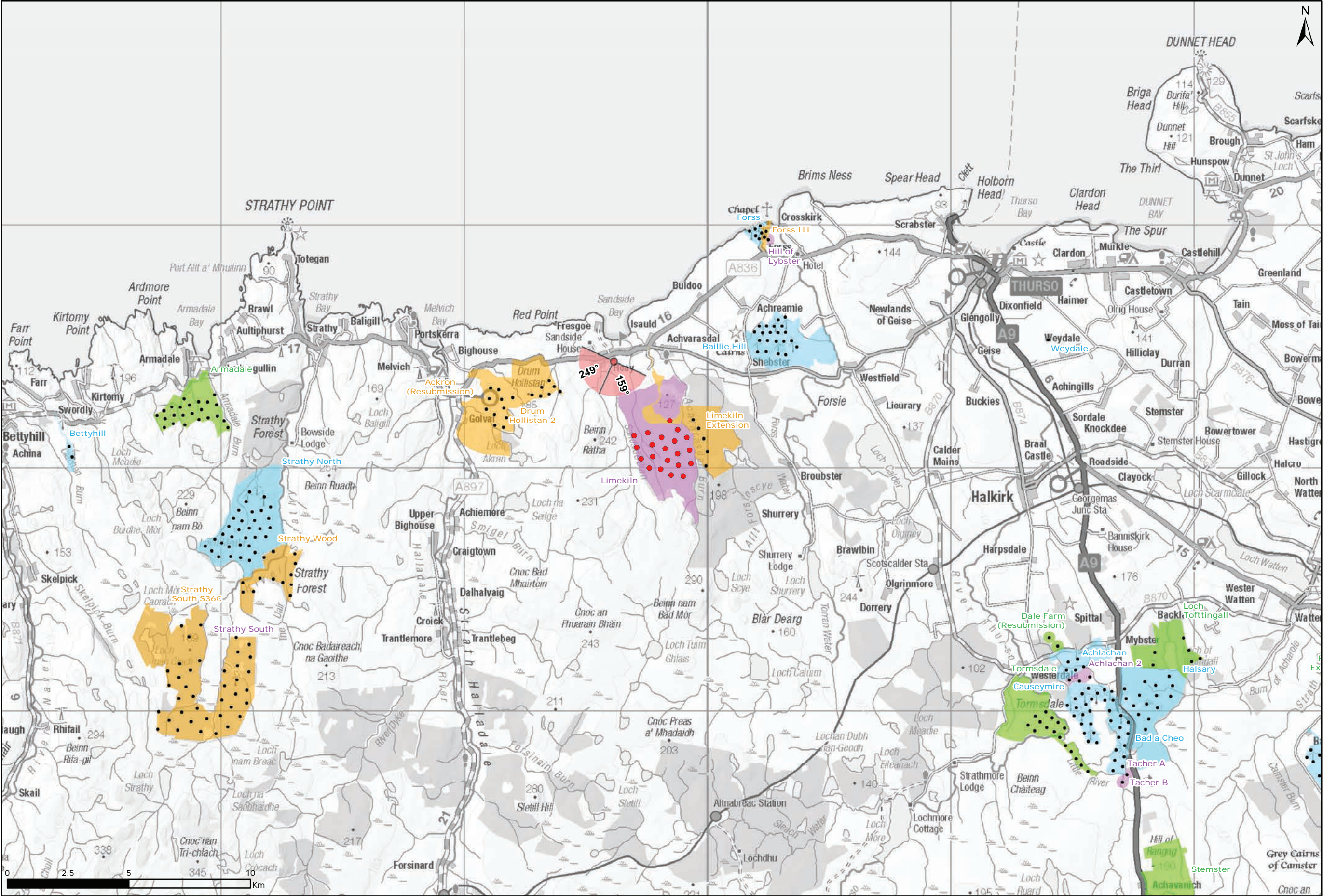
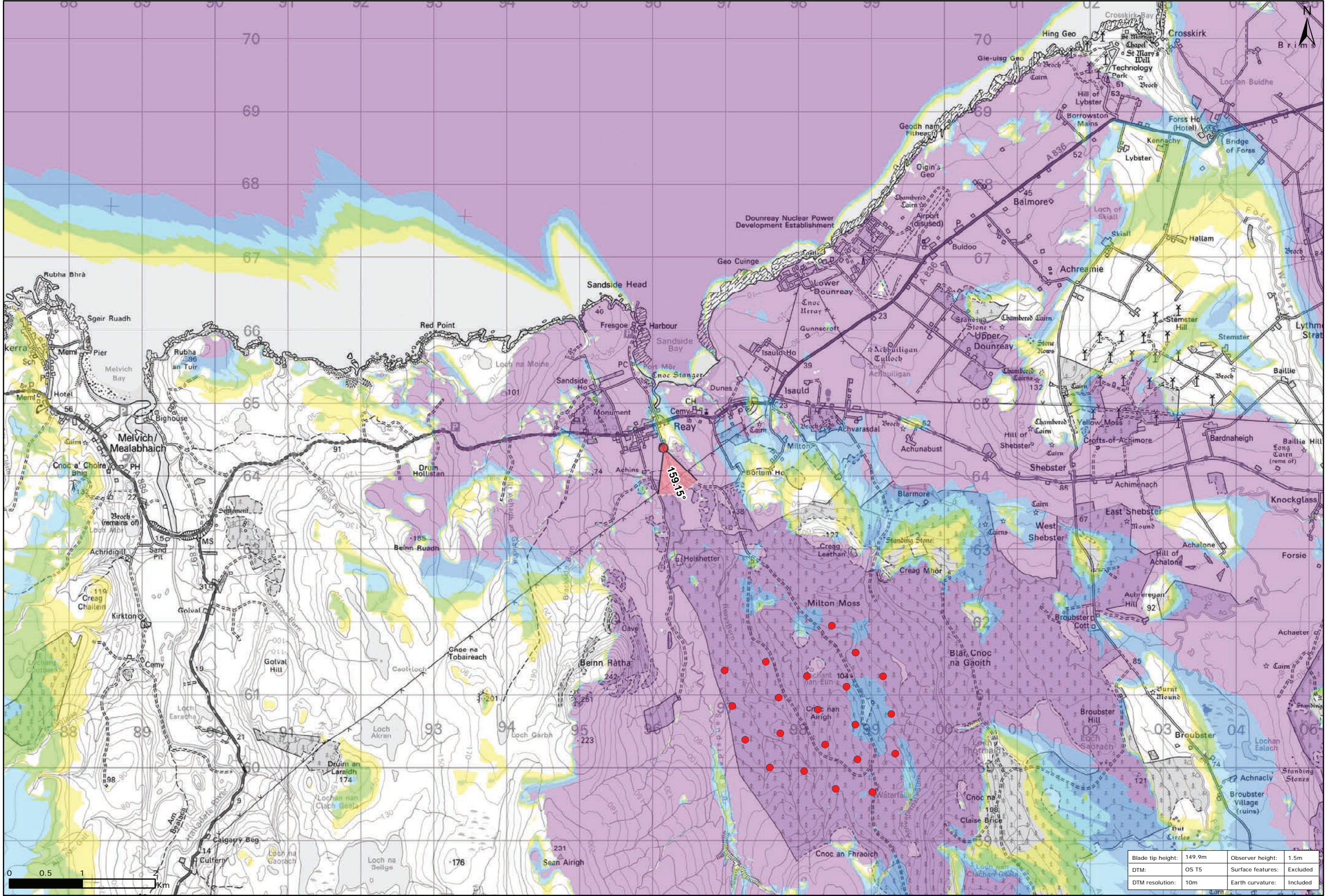


Figure 9.38a: Viewpoint 2: Reay Footpath



Viewpoint Location Plan Baseline Panorama
Scale: 1:150,000



Viewpoint Location Plan
Scale: 1:50,000 (Blade Tip ZTV)

Legend:

- Proposed
- 90 degree field of view viewpoint
- 53.5 degree field of view viewpoint
- Viewpoint with no Photomontage View

Wind Farm Status (1:150,000 only):

- Turbine Locations
- Operational / Under Construction
- Consented
- Application
- Scoping

Blade Tip ZTV

No. of Theoretically Visible Turbines

| |
|---------|
| 1 - 4 |
| 5 - 8 |
| 9 - 12 |
| 13 - 16 |
| 17 - 20 |
| 21 - 24 |

Title: Viewpoint 2: Reay Footpath

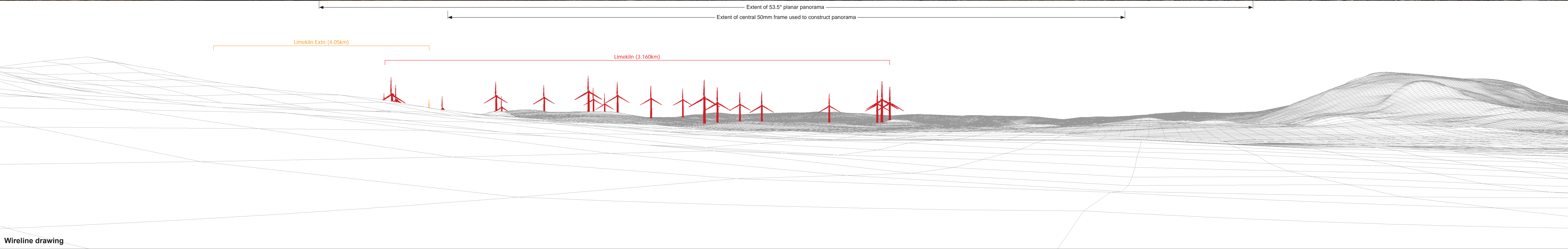
Limekiln Wind Farm S36C

Source: Crown copyright and database rights 2021 Ordnance Survey 0100031673

Client: Infinergy

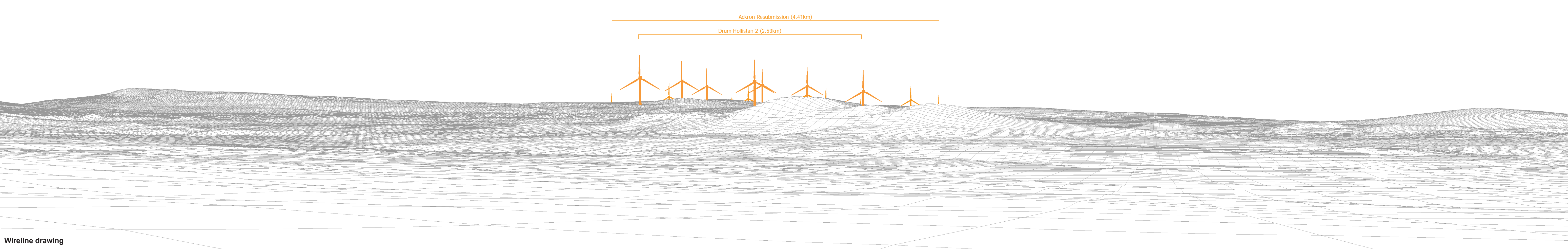
| | |
|------------------|----------------|
| Drawn by: TH | Checked: JP |
| Date: 15/06/2021 | Figure: 9.38a |
| Scale: Multiple | Revision No: 0 |

INFINERGY

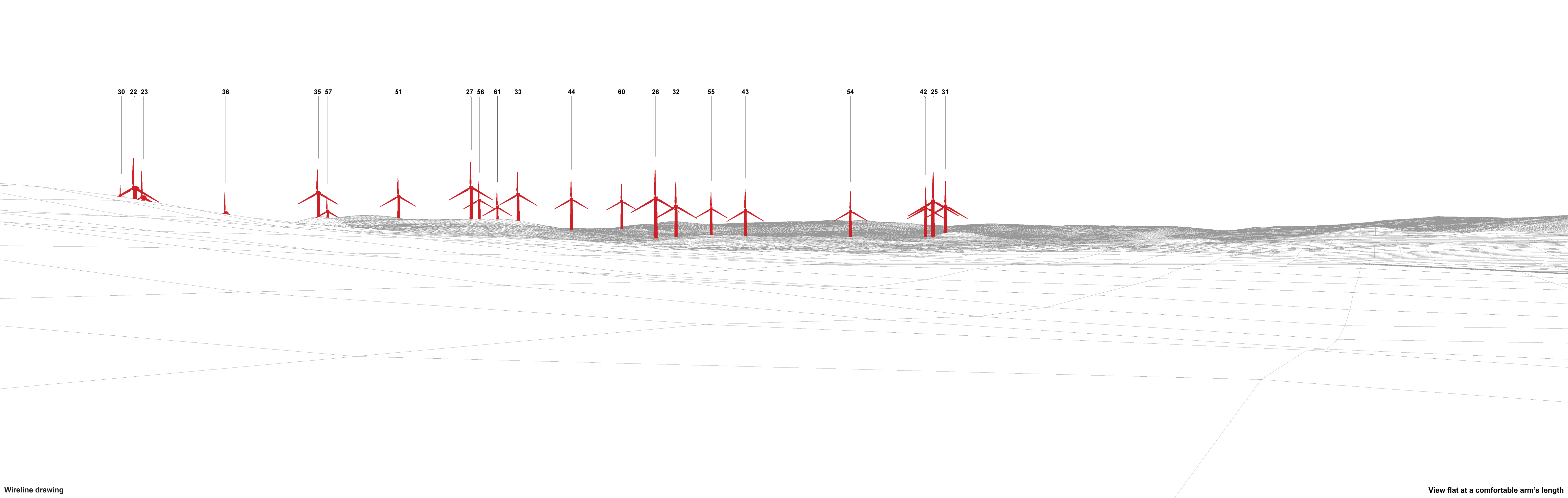




Baseline photograph



Wireline drawing



Wireline drawing

View flat at a comfortable arm's length

| | | | | | |
|--------------------|------------------|-----------------------------|---------------------------|----------------|----------------------------|
| OS reference: | 296149 E 964385N | Horizontal field of view: | 53.5° (planar projection) | Camera: | Canon EOS 5D Mark II |
| Eye level: | 29.08 m AOD | Principal distance | 812.5 mm | Lens: | 50mm (Canon EF 50mm f/1.4) |
| Direction of view: | 159° | Paper size: | 841 x 297 mm (half A1) | Camera height: | 1.5 m AGL |
| Nearest turbine: | 3.160 km | Correct printed image size: | 820 x 260 mm | Date and time: | 13/04/21, 10:19 |

Figure: 9.38d
NS Viewpoint 2: Reay Footpath



Photomontage

View flat at a comfortable arm's length

| | | | | | |
|--------------------|------------------|-----------------------------|---------------------------|----------------|----------------------------|
| OS reference: | 296149 E 964385N | Horizontal field of view: | 53.5° (planar projection) | Camera: | Canon EOS 5D Mark II |
| Eye level: | 29.08 m AOD | Principal distance | 812.5 mm | Lens: | 50mm (Canon EF 50mm f/1.4) |
| Direction of view: | 159° | Paper size: | 841 x 297 mm (half A1) | Camera height: | 1.5 m AGL |
| Nearest turbine: | 3.160 km | Correct printed image size: | 820 x 260 mm | Date and time: | 13/04/21, 10:19 |

Figure: 9.38e
NS Viewpoint 2: Reay Footpath