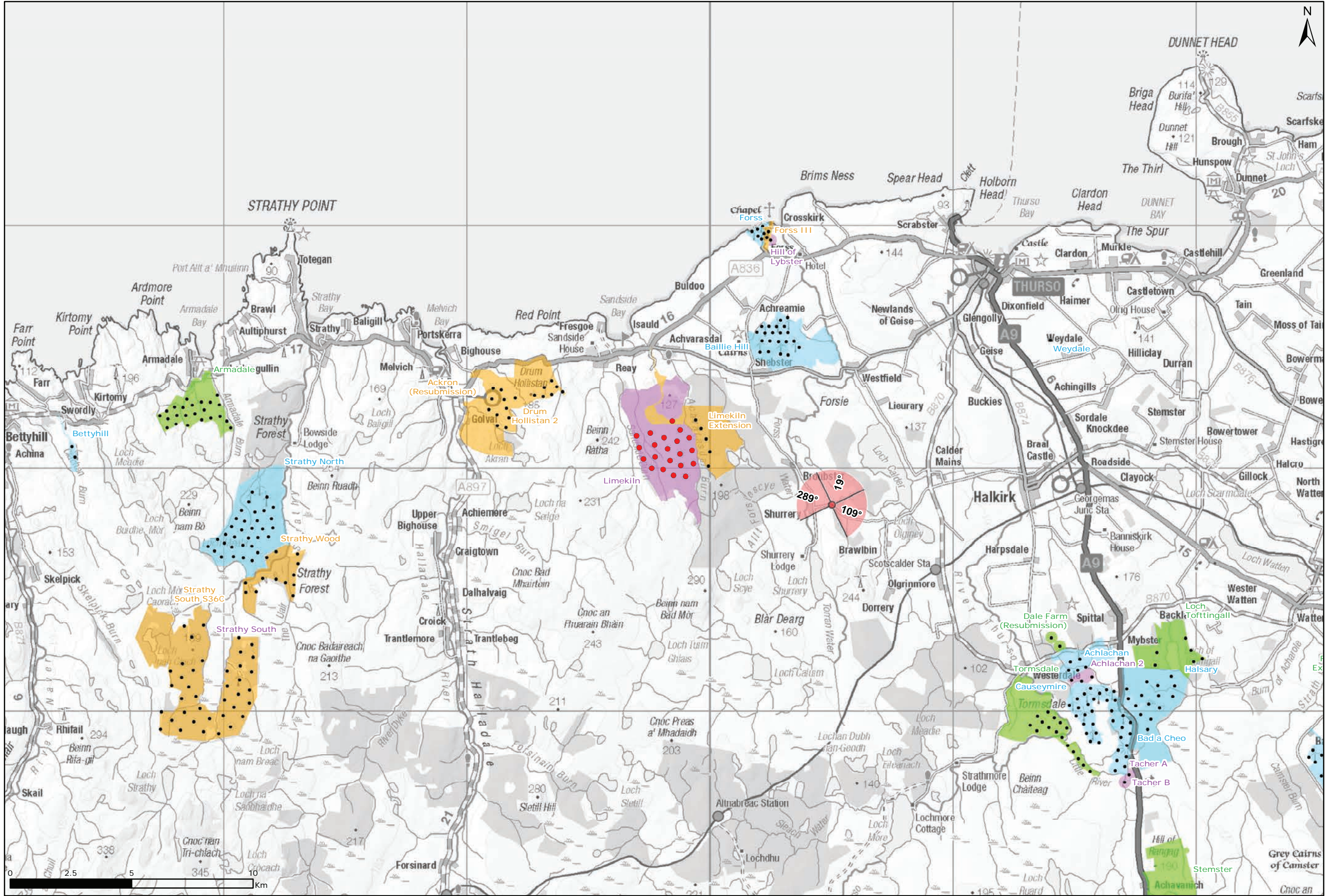
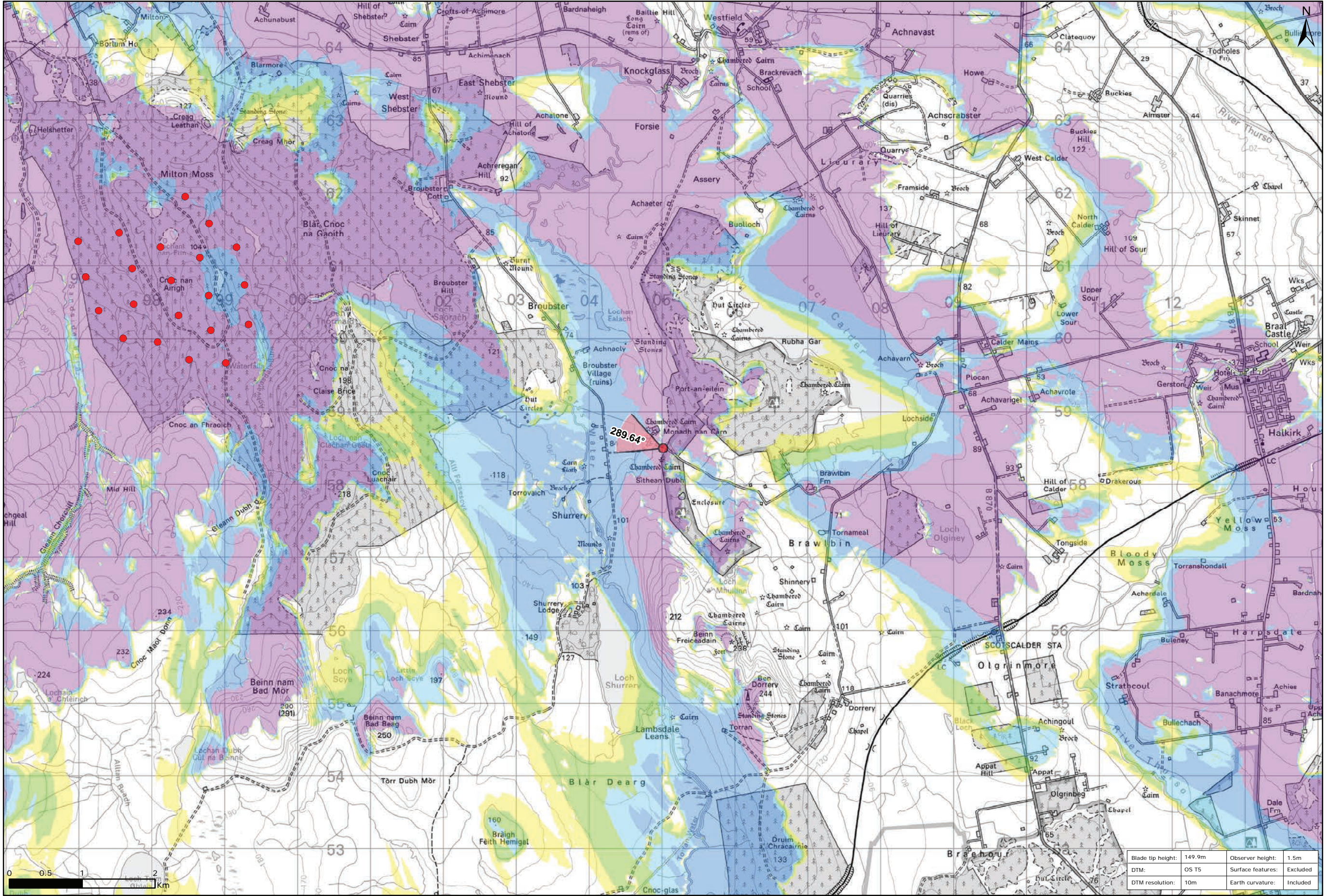


Figure 9.52a: Viewpoint 16: Shurrery



Viewpoint Location Plan Baseline Panorama  
Scale: 1:150,000



Viewpoint Location Plan  
Scale: 1:50,000 (Blade Tip ZTV)

Legend:

- Proposed
- 90 degree field of view viewpoint
- 53.5 degree field of view viewpoint
- Viewpoint with no Photomontage View

Wind Farm Status (1:150,000 only):

- Turbine Locations
- Operational / Under Construction
- Consented
- Application
- Scoping

Blade Tip ZTV

No. of Theoretically Visible Turbines

1 - 4
5 - 8
9 - 12
13 - 16
17 - 20
21 - 24

Title: Viewpoint 16: Shurrery

Limekiln Wind Farm S36C

Source: Crown copyright and database rights 2021 Ordnance Survey 0100031673

Client: Infinergy

Drawn by: TH

Checked: JP

Date: 15/06/2021

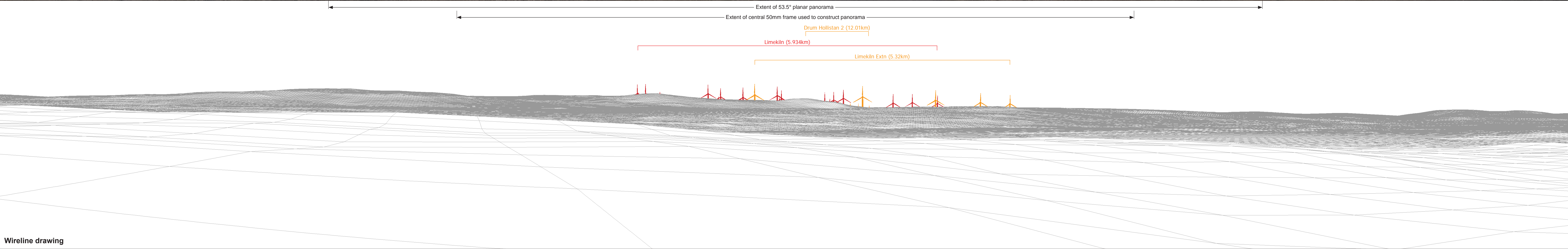
Figure: 9.52a

Scale: Multiple

Revision No: 0

INFINERGY



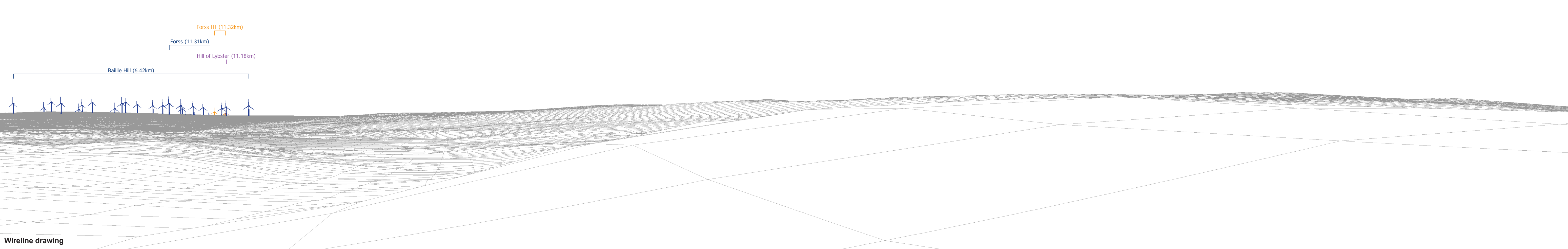






Baseline photograph

This image provides landscape and visual context only



Wireline drawing

OS reference:	305014 E 958497 N	Horizontal field of view:	90° (cylindrical projection)	Camera:	Canon EOS 5D Mark II
Eye level:	100.82 m AOD	Principal distance	522 mm	Lens:	50mm (Canon EF 50mm f/1.4)
Direction of view:	19°			Camera height:	1.5 m AGL
Nearest turbine:	5.934 km			Date and time:	12/04/21, 13:47

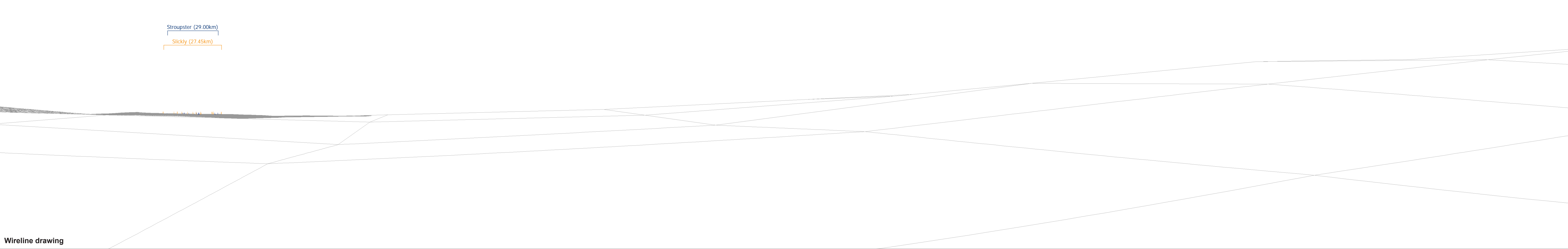
Figure: 9.52c  
NS Viewpoint 16: Shurrery





Baseline photograph

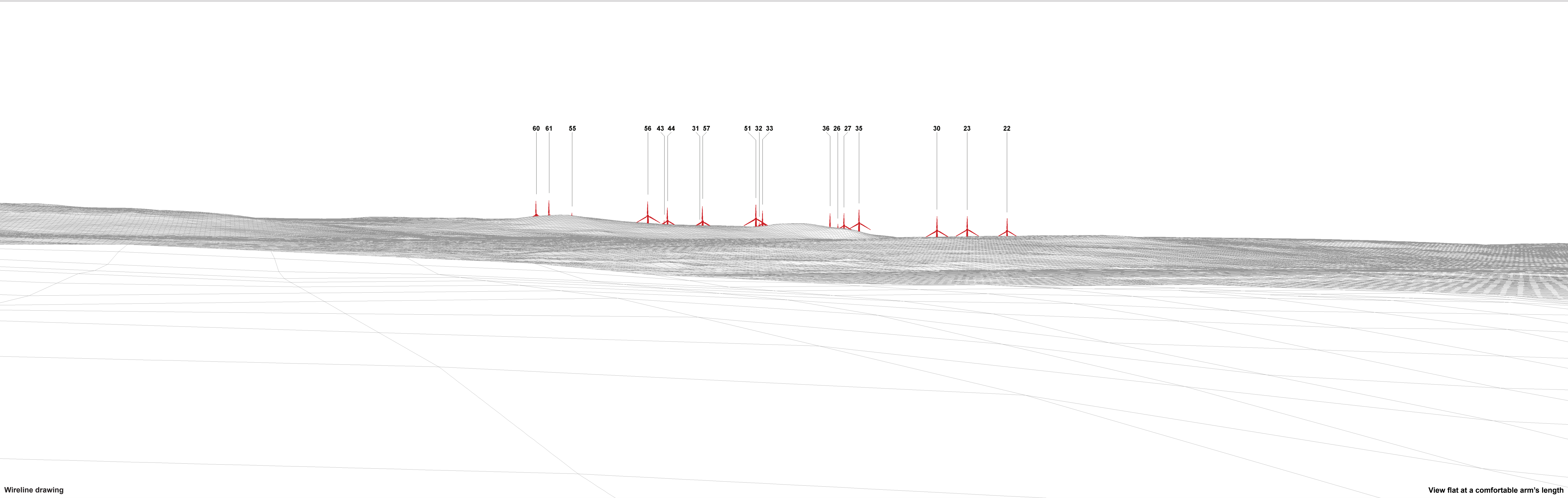
This image provides landscape and visual context only



Wireline drawing

OS reference: Eye level: Direction of view: Nearest turbine:	305014 E 958497 N 100.82 m AOD 109° 5.934 km	Horizontal field of view: Principal distance	90° (cylindrical projection) 522 mm	Camera: Lens: Camera height: Date and time:	Canon EOS 5D Mark II 50mm (Canon EF 50mm f/1.4) 1.5 m AGL 12/04/21, 13:47	Figure: 9.52d NS Viewpoint 16: Shurrery





Wireline drawing

View flat at a comfortable arm's length

OS reference:	305014 E 958497 N	Horizontal field of view:	53.5° (planar projection)	Camera:	Canon EOS 5D Mark II
Eye level:	100.82 m AOD	Principal distance:	812.5 mm	Lens:	50mm (Canon EF 50mm f/1.4)
Direction of view:	289°	Paper size:	841 x 297 mm (half A1)	Camera height:	1.5 m AGL
Nearest turbine:	5.934 km	Correct printed image size:	820 x 260 mm	Date and time:	12/04/21, 13:47

Figure: 9.52e  
NS Viewpoint 16: Shurrery





Photomontage

View flat at a comfortable arm's length

OS reference:	305014 E 958497 N	Horizontal field of view:	53.5° (planar projection)	Camera:	Canon EOS 5D Mark II	<b>Figure: 9.52f</b> <b>NS Viewpoint 16: Shurrery</b> <small>© Crown copyright and database rights 2021 Ordnance Survey 0100031673</small>
Eye level:	100.82 m AOD	Principal distance	812.5 mm	Lens:	50mm (Canon EF 50mm f/1.4)	
Direction of view:	289°	Paper size:	841 x 297 mm (half A1)	Camera height:	1.5 m AGL	
Nearest turbine:	5.934 km	Correct printed image size:	820 x 260 mm	Date and time:	12/04/21, 13:47	