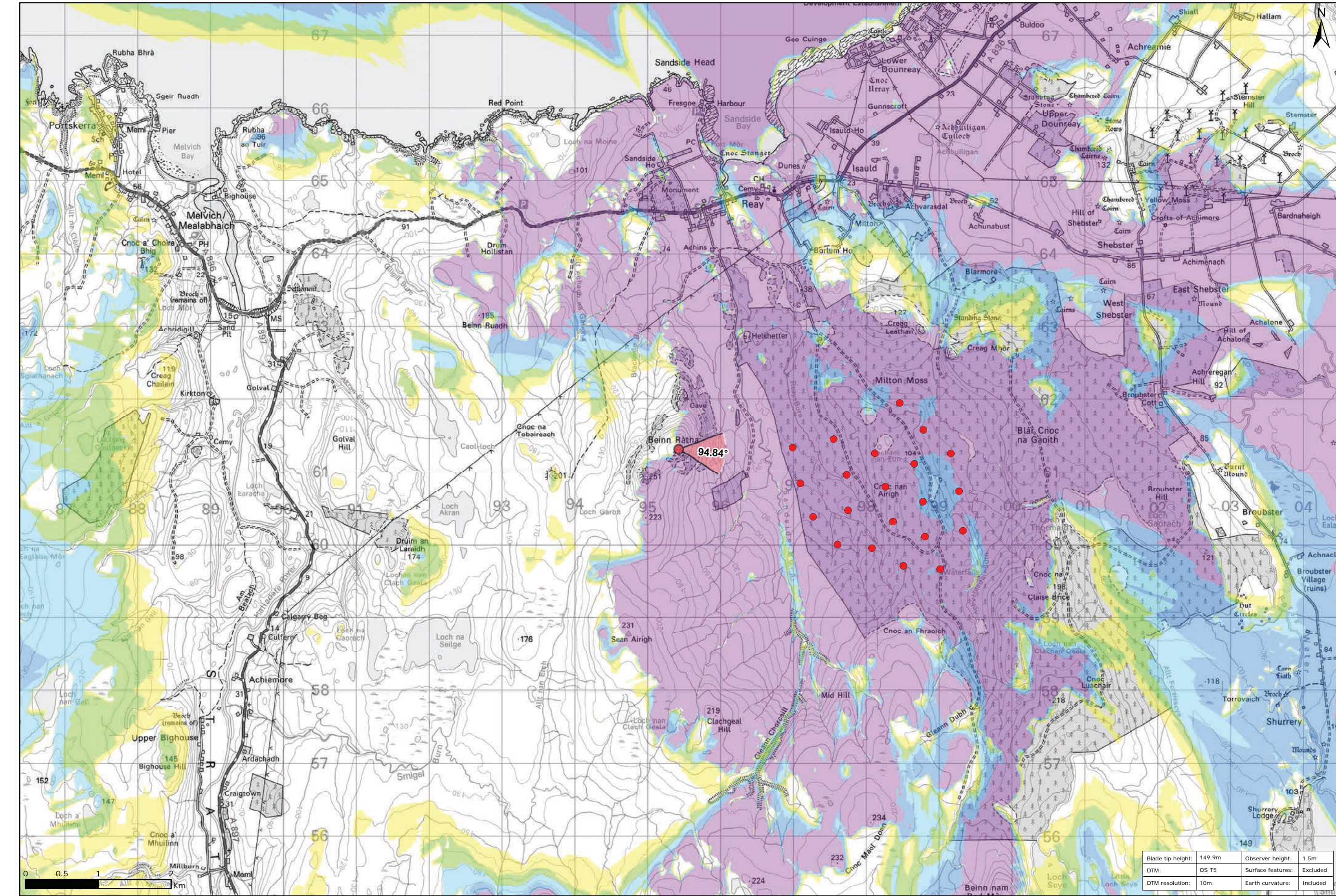


Viewpoint Location Plan Baseline Panorama  
Scale: 1:150,000



Viewpoint Location Plan  
Scale: 1:50,000 (Blade Tip ZTV)

**Legend:**

- Proposed
- 90 degree field of view viewpoint
- 53.5 degree field of view viewpoint
- Viewpoint with no Photomontage View

**Wind Farm Status (1:150,000 only):**

- Turbine Locations
- Operational / Under Construction
- Consented
- Application
- Scoping

**Blade Tip ZTV**

No. of Theoretically Visible Turbines

- 1 - 4
- 5 - 8
- 9 - 12
- 13 - 16
- 17 - 20
- 21 - 24

**Title:** Viewpoint 15: Beinn Ratha

**Limekiln Wind Farm S36C**

**Source:** © Crown copyright and database rights 2021 Ordnance Survey 0100031673

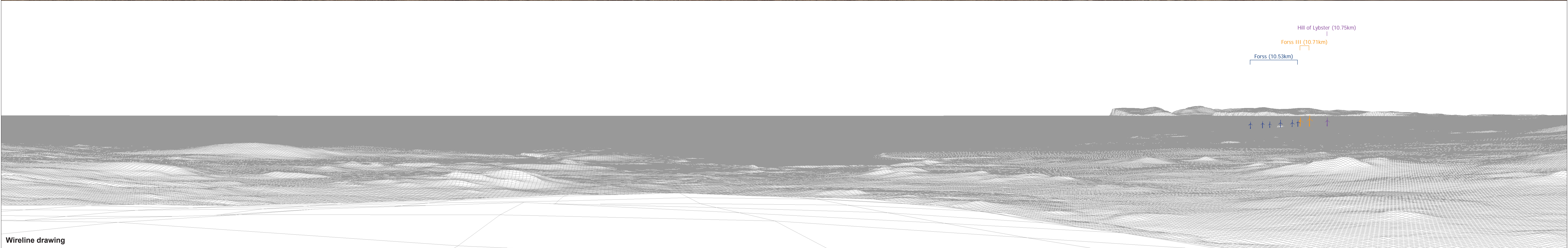
**Client:** Infinergy

**Drawn by:** TH      **Checked:** JP

**Date:** 15/06/2021      **Figure:** 9.51a

**Scale:** Multiple      **Revision No.:** 0

Blade tip height:	149.9m	Observer height:	1.5m
DTM:	OS T5	Surface features:	Excluded
DTM resolution:	10m	Earth curvature:	Included



<b>OS reference:</b> 295424 E 961314 N	<b>Horizontal field of view:</b> 90° (cylindrical projection)	<b>Camera:</b> Canon EOS 5D Mark II
<b>Eye level:</b> 242.4 m AOD	<b>Principal distance:</b> 522 mm	<b>Lens:</b> 50mm (Canon EF 50mm f/1.4)
<b>Direction of view:</b> 10°		<b>Camera height:</b> 1.5 m AGL
<b>Nearest turbine:</b> 1.564 km		<b>Date and time:</b> 15/04/21, 14:25

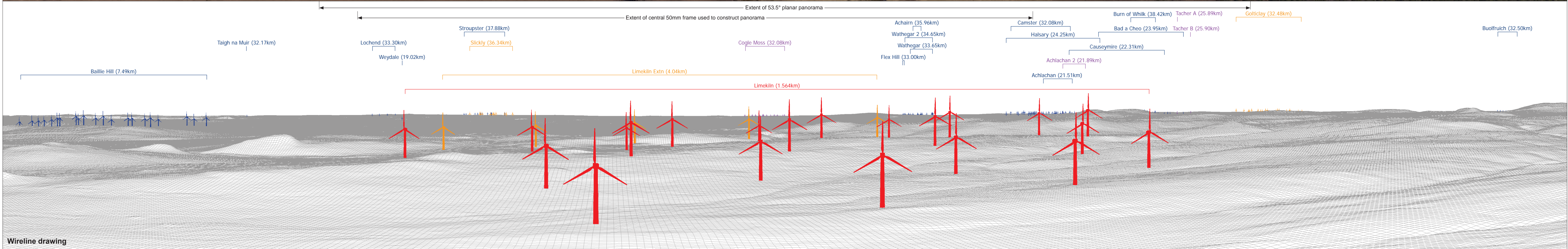
**Figure: 9.51b**  
**NS Viewpoint 15: Beinn Ratha**

© Crown copyright and database rights 2021 Ordnance Survey 0100031673



Baseline photograph

This image provides landscape and visual context only



Wireline drawing

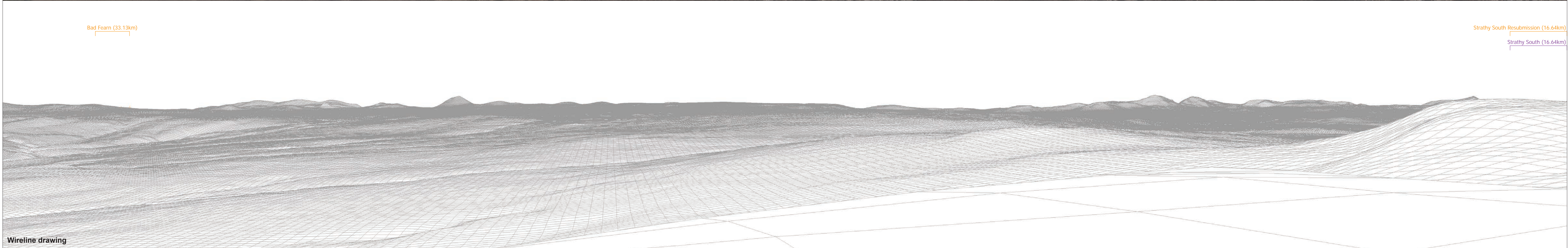
<b>OS reference:</b> 295424 E 961314 N	<b>Horizontal field of view:</b> 90° (cylindrical projection)	<b>Camera:</b> Canon EOS 5D Mark II
<b>Eye level:</b> 242.4 m AOD	<b>Principal distance:</b> 522 mm	<b>Lens:</b> 50mm (Canon EF 50mm f/1.4)
<b>Direction of view:</b> 100°		<b>Camera height:</b> 1.5 m AGL
<b>Nearest turbine:</b> 1.564 km		<b>Date and time:</b> 15/04/21, 14:25

Figure: 9.51c  
NS Viewpoint 15: Beinn Ratha



Baseline photograph

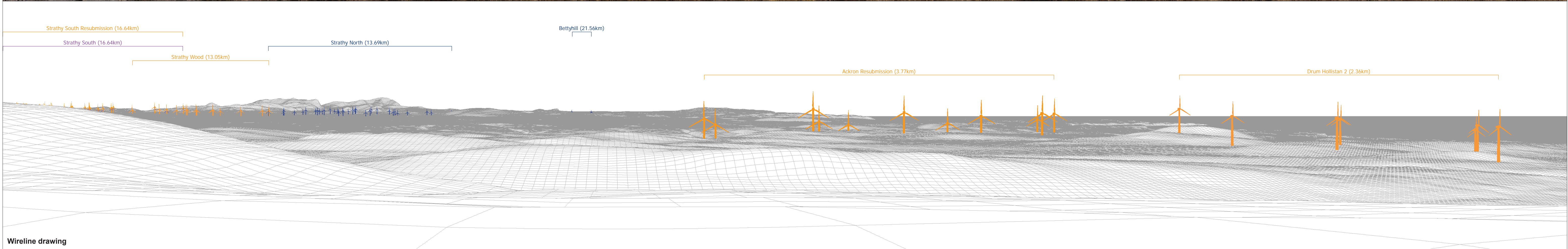
This image provides landscape and visual context only



Wireline drawing

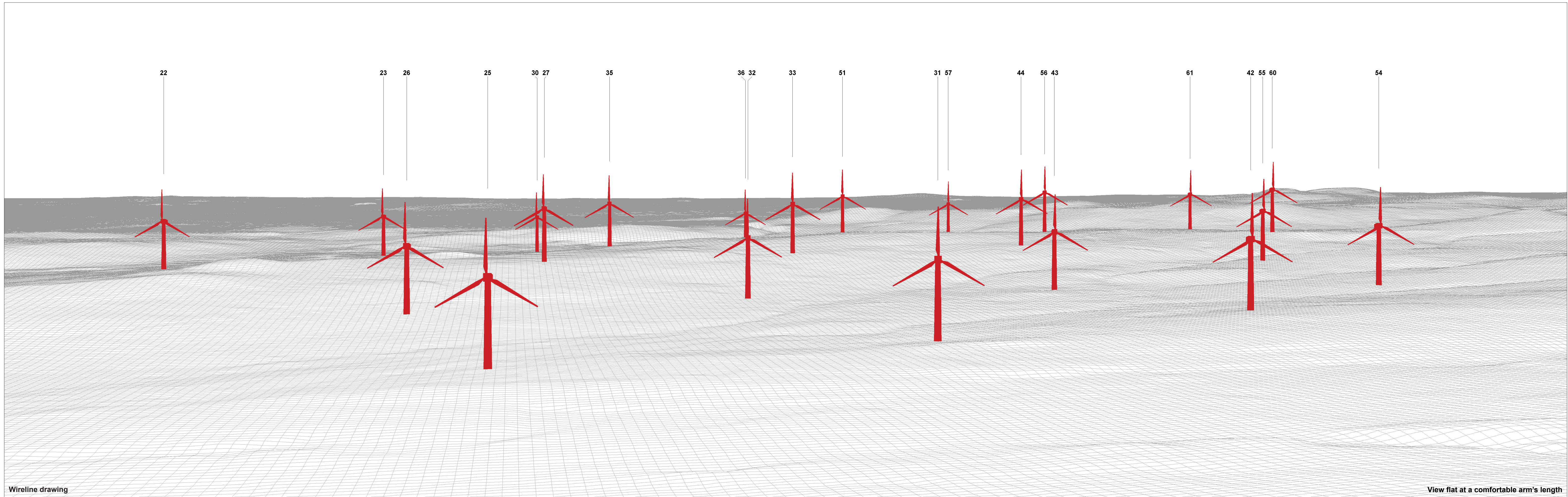
<b>OS reference:</b> 295424 E 961314 N	<b>Horizontal field of view:</b> 90° (cylindrical projection)	<b>Camera:</b> Canon EOS 5D Mark II
<b>Eye level:</b> 242.4 m AOD	<b>Principal distance:</b> 522 mm	<b>Lens:</b> 50mm (Canon EF 50mm f/1.4)
<b>Direction of view:</b> 190°		<b>Camera height:</b> 1.5 m AGL
<b>Nearest turbine:</b> 1.564 km		<b>Date and time:</b> 15/04/21, 14:25

**Figure: 9.51d**  
**NS Viewpoint 15: Beinn Ratha**



<b>OS reference:</b> 295424 E 961314 N	<b>Horizontal field of view:</b> 90° (cylindrical projection)	<b>Camera:</b> Canon EOS 5D Mark II
<b>Eye level:</b> 242.4 m AOD	<b>Principal distance:</b> 522 mm	<b>Lens:</b> 50mm (Canon EF 50mm f/1.4)
<b>Direction of view:</b> 280°		<b>Camera height:</b> 1.5 m AGL
<b>Nearest turbine:</b> 1.564 km		<b>Date and time:</b> 15/04/21, 14:25

**Figure: 9.51e**  
NS Viewpoint 15: Beinn Ratha



Wireline drawing

View flat at a comfortable arm's length

OS reference: 295424 E 961314 N  
 Eye level: 242.4 m AOD  
 Direction of view: 100°  
 Nearest turbine: 1.564 km

Horizontal field of view: 53.5° (planar projection)  
 Principal distance: 812.5 mm  
 Paper size: 841 x 297 mm (half A1)  
 Correct printed image size: 820 x 260 mm

Camera: Canon EOS 5D Mark II  
 Lens: 50mm (Canon EF 50mm f/1.4)  
 Camera height: 1.5 m AGL  
 Date and time: 15/04/21, 14:25

Figure: 9.51f  
 NS Viewpoint 15: Beinn Ratha



Photomontage (NO INFRASTRUCTURE SHOWN)

View flat at a comfortable arm's length

<b>OS reference:</b> 295424 E 961314 N	<b>Horizontal field of view:</b> 53.5° (planar projection)	<b>Camera:</b> Canon EOS 5D Mark II	
<b>Eye level:</b> 242.4 m AOD	<b>Principal distance:</b> 812.5 mm	<b>Lens:</b> 50mm (Canon EF 50mm f/1.4)	
<b>Direction of view:</b> 100°	<b>Paper size:</b> 841 x 297 mm (half A1)	<b>Camera height:</b> 1.5 m AGL	
<b>Nearest turbine:</b> 1.564 km	<b>Correct printed image size:</b> 820 x 260 mm	<b>Date and time:</b> 15/04/21, 14:25	

**Figure: 9.51g**  
**NS Viewpoint 15: Beinn Ratha**