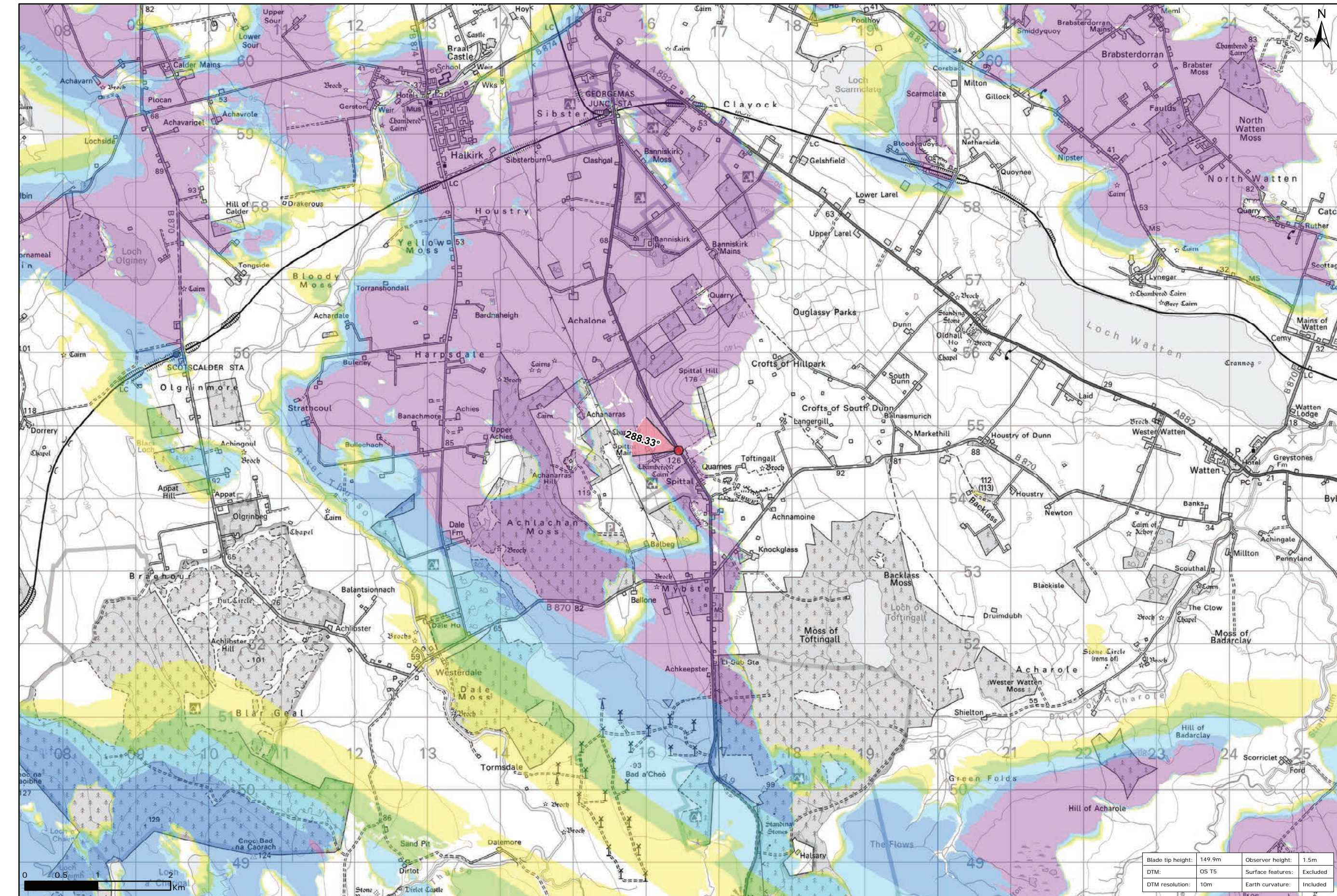


Viewpoint Location Plan Baseline Panorama
Scale: 1:150,000



Viewpoint Location Plan
Scale: 1:50,000 (Blade Tip ZTV)

Legend:

- Proposed
- 90 degree field of view viewpoint
- 53.5 degree field of view viewpoint
- Viewpoint with no Photomontage View

Wind Farm Status (1:150,000 only):

- Turbine Locations
- Operational / Under Construction
- Consented
- Application
- Scoping

Blade Tip ZTV

No. of Theoretically Visible Turbines

- 1 - 4
- 5 - 8
- 9 - 12
- 13 - 16
- 17 - 20
- 21 - 24

Title:
Viewpoint 12: A9, North of Spittal

Limekiln Wind Farm S36C

Source:
© Crown copyright and database rights 2021 Ordnance Survey 0100031673.

Client:
Infenergy

Drawn by: TH
Checked: JP

Date: 15/06/2021
Figure: 9.48a

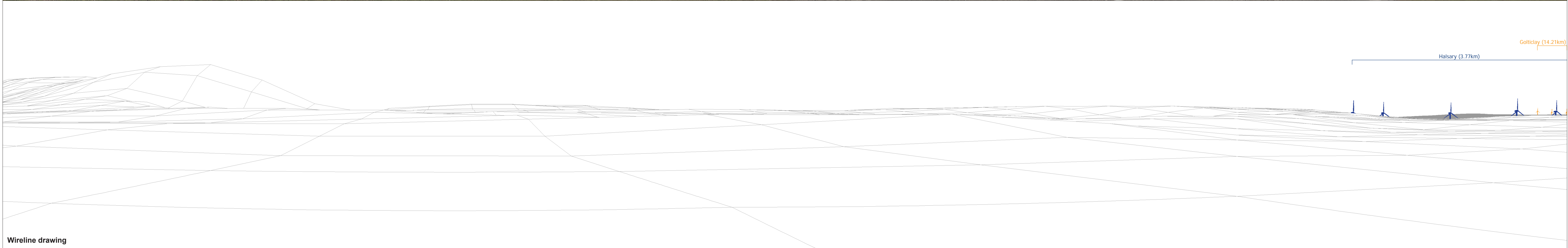
Scale: Multiple
Revision No: 0

INFINERGY



Baseline photograph

This image provides landscape and visual context only



Wireline drawing

OS reference: 316446 E 954654 N
 Eye level: 125.98 m AOD
 Direction of view: 109°
 Nearest turbine: 17.992 km

Horizontal field of view: 90° (cylindrical projection)
 Principal distance: 522 mm

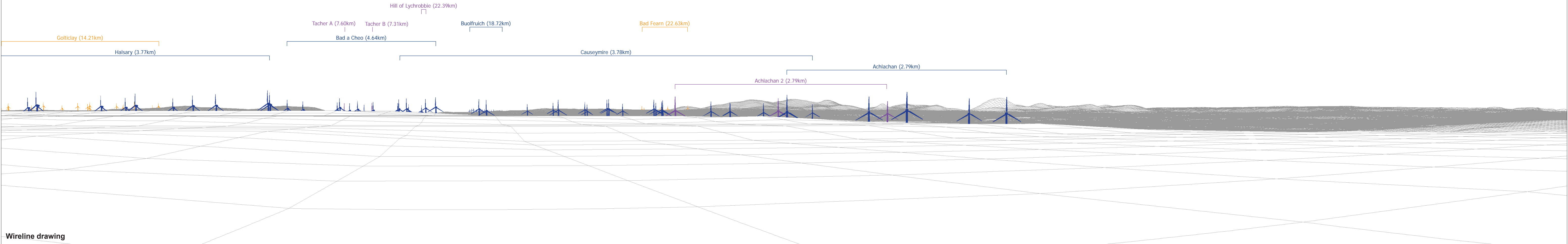
Camera: Canon EOS 5D Mark II
 Lens: 50mm (Canon EF 50mm f/1.4)
 Camera height: 1.5 m AGL
 Date and time: 10/05/12, 15:37

Figure: 9.48b
 NS Viewpoint 12: A9, North of Spittal



Baseline photograph

This image provides landscape and visual context only



Wireline drawing

OS reference: 316446 E 954654 N	Horizontal field of view: 90° (cylindrical projection)	Camera: Canon EOS 5D Mark II
Eye level: 125.98 m AOD	Principal distance: 522 mm	Lens: 50mm (Canon EF 50mm f/1.4)
Direction of view: 199°		Camera height: 1.5 m AGL
Nearest turbine: 17.992 km		Date and time: 10/05/12, 15:37

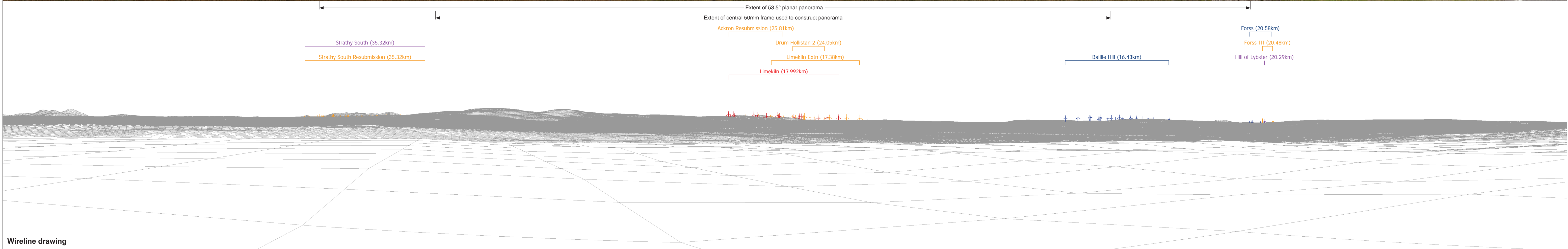
Figure: 9.48c
NS Viewpoint 12: A9, North of Spittal

© Crown copyright and database rights 2021 Ordnance Survey 0100031673



Baseline photograph

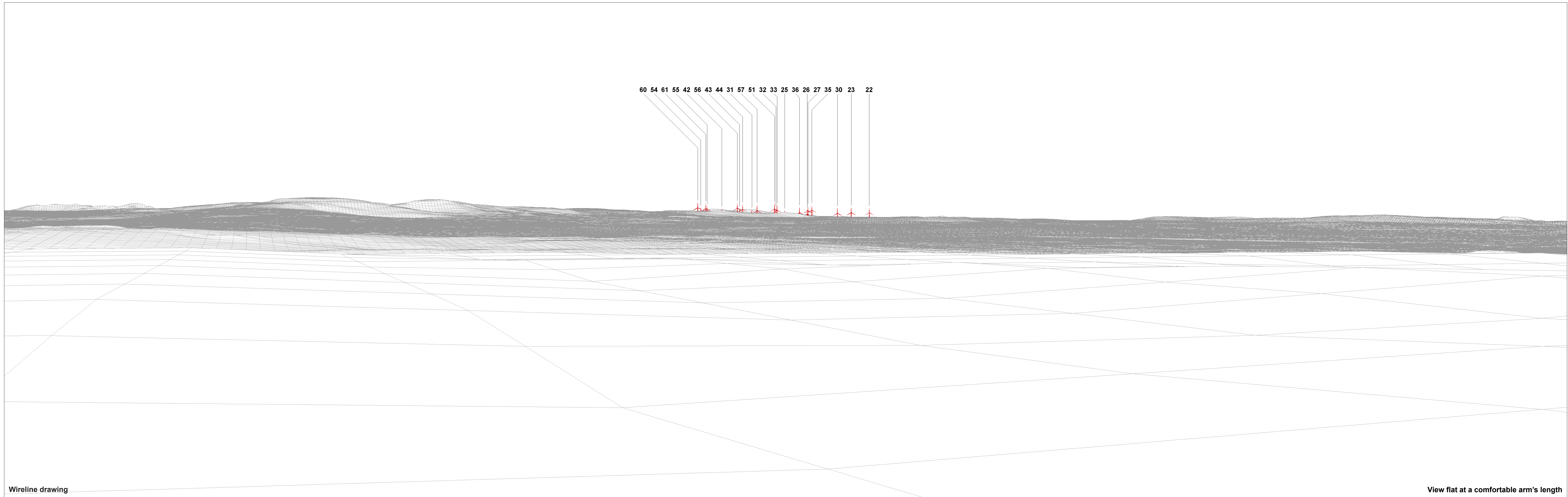
This image provides landscape and visual context only



Wireline drawing

OS reference: 316446 E 954654 N	Horizontal field of view: 90° (cylindrical projection)	Camera: Canon EOS 5D Mark II
Eye level: 125.98 m AOD	Principal distance: 522 mm	Lens: 50mm (Canon EF 50mm f/1.4)
Direction of view: 289°		Camera height: 1.5 m AGL
Nearest turbine: 17.992 km		Date and time: 10/05/12, 15:37

Figure: 9.48d
NS Viewpoint 12: A9, North of Spittal



60 54 61 55 42 56 43 44 31 57 51 32 33 25 36 26 27 35 30 23 22

Wireline drawing

View flat at a comfortable arm's length

OS reference: 316446 E 954654 N
 Eye level: 125.98 m AOD
 Direction of view: 289°
 Nearest turbine: 17.992 km

Horizontal field of view: 53.5° (planar projection)
 Principal distance: 812.5 mm
 Paper size: 841 x 297 mm (half A1)
 Correct printed image size: 820 x 260 mm

Camera: Canon EOS 5D Mark II
 Lens: 50mm (Canon EF 50mm f/1.4)
 Camera height: 1.5 m AGL
 Date and time: 10/05/12, 15:37

Figure: 9.48e
 NS Viewpoint 12: A9, North of Spittal



Photomontage

View flat at a comfortable arm's length

OS reference:	316446 E 954654 N	Horizontal field of view:	53.5° (planar projection)	Camera:	Canon EOS 5D Mark II
Eye level:	125.98 m AOD	Principal distance:	812.5 mm	Lens:	50mm (Canon EF 50mm f/1.4)
Direction of view:	289°	Paper size:	841 x 297 mm (half A1)	Camera height:	1.5 m AGL
Nearest turbine:	17.992 km	Correct printed image size:	820 x 260 mm	Date and time:	10/05/12, 15:37

Figure: 9.48f
NS Viewpoint 12: A9, North of Spittal