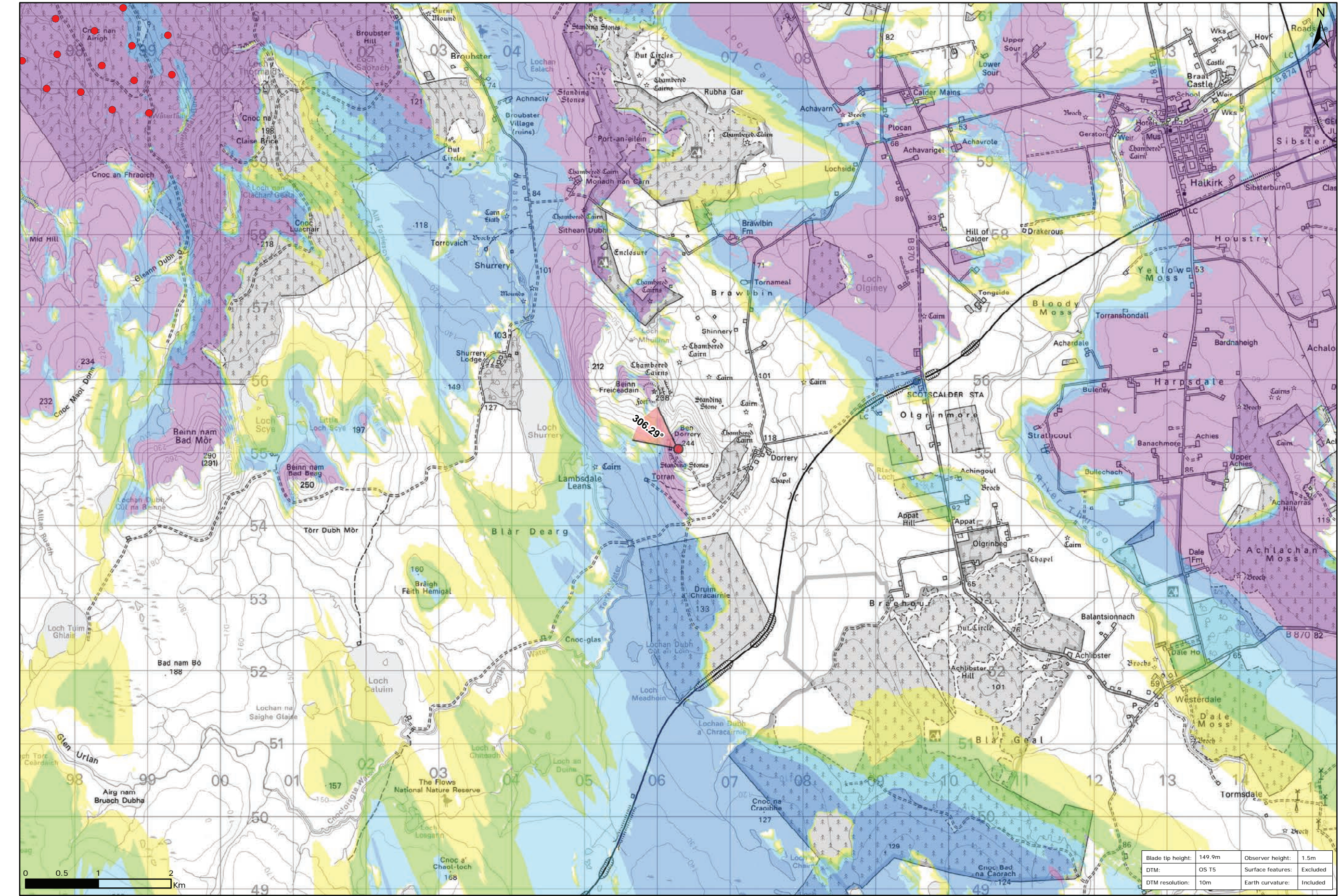


Viewpoint Location Plan Baseline Panorama  
Scale: 1:150,000



Viewpoint Location Plan  
Scale: 1:50,000 (Blade Tip ZTV)

**Legend:**

- Proposed
- 90 degree field of view viewpoint
- 53.5 degree field of view viewpoint
- Viewpoint with no Photomontage View

**Wind Farm Status (1:150,000 only):**

- Turbine Locations
- Operational / Under Construction
- Consented
- Application
- Scoping

**Blade Tip ZTV**

No. of Theoretically Visible Turbines

- 1 - 4
- 5 - 8
- 9 - 12
- 13 - 16
- 17 - 20
- 21 - 24

**Title:** Viewpoint 9: Ben Dorrery

**Project:** Limekiln Wind Farm S36C

**Source:** Crown copyright and database rights 2021 Ordnance Survey 0100031673

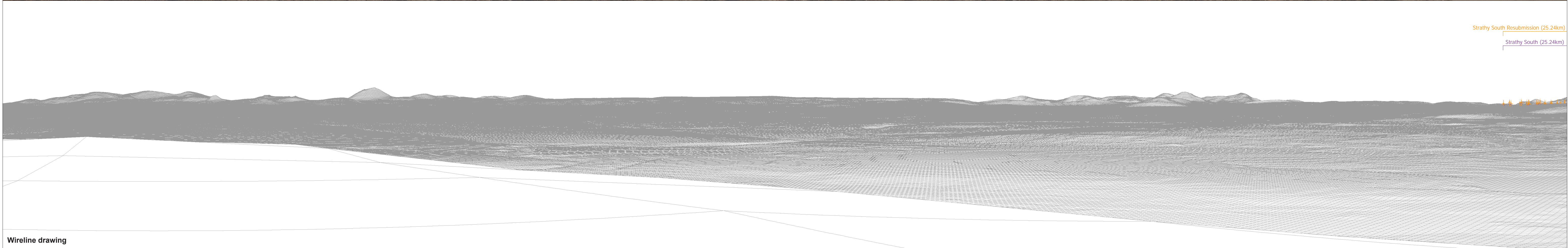
**Client:** Infinergy

|                  |                |
|------------------|----------------|
| Drawn by: TH     | Checked: JP    |
| Date: 15/06/2021 | Figure: 9.45a  |
| Scale: Multiple  | Revision No: 0 |

**Technical Data:**

|                          |                            |
|--------------------------|----------------------------|
| Blade tip height: 149.9m | Observer height: 1.5m      |
| DTM: OS T5               | Surface features: Excluded |
| DTM resolution: 10m      | Earth curvature: Included  |





OS reference: 306287 E 955051 N  
 Eye level: 245.42 m AOD  
 Direction of view: 216°  
 Nearest turbine: 8.614 km

Horizontal field of view: 90° (cylindrical projection)  
 Principal distance: 522 mm

Camera: Canon EOS 5D Mark II  
 Lens: 50mm (Canon EF 50mm f/1.4)  
 Camera height: 1.5 m AGL  
 Date and time: 13/04/21, 13:33

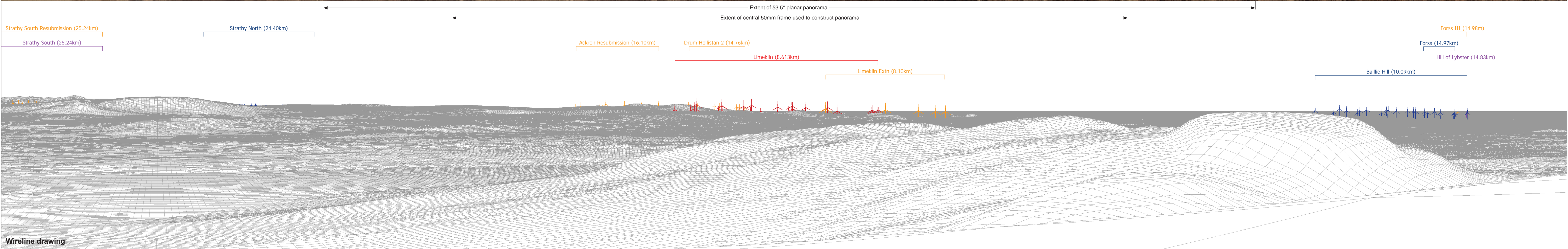
Figure: 9.45b  
 NS Viewpoint 9: Ben Dorrery





Baseline photograph

This image provides landscape and visual context only



Wireline drawing

|  |   |   |
|--|---|---|
| <b>OS reference:</b> 306287 E 955051 N | <b>Horizontal field of view:</b> 90° (cylindrical projection) | <b>Camera:</b> Canon EOS 5D Mark II     |
| <b>Eye level:</b> 245.42 m AOD         | <b>Principal distance:</b> 522 mm                             | <b>Lens:</b> 50mm (Canon EF 50mm f/1.4) |
| <b>Direction of view:</b> 306°         |   | <b>Camera height:</b> 1.5 m AGL         |
| <b>Nearest turbine:</b> 8.614 km       |   | <b>Date and time:</b> 13/04/21, 13:33   |

Figure: 9.45c  
NS Viewpoint 9: Ben Dorrery





Baseline photograph

This image provides landscape and visual context only

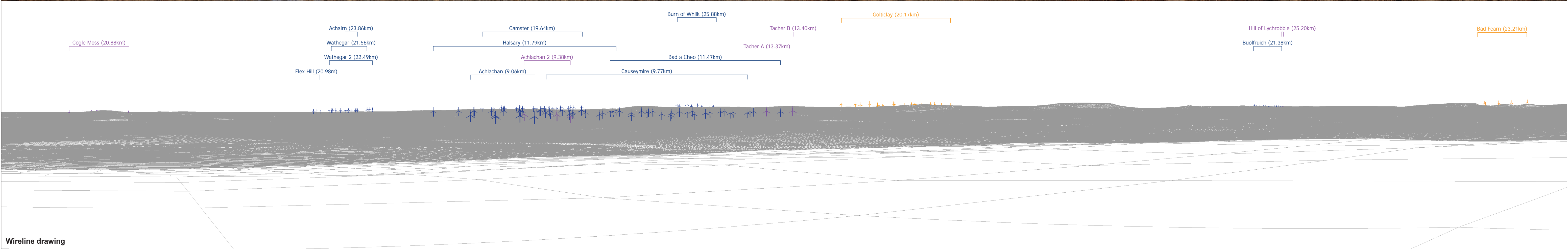


Wireline drawing

|                           |                   |                                  |                              |                       |                            |
|---------------------------|-------------------|----------------------------------|------------------------------|-----------------------|----------------------------|
| <b>OS reference:</b>      | 306287 E 955051 N | <b>Horizontal field of view:</b> | 90° (cylindrical projection) | <b>Camera:</b>        | Canon EOS 5D Mark II       |
| <b>Eye level:</b>         | 245.42 m AOD      | <b>Principal distance</b>        | 522 mm                       | <b>Lens:</b>          | 50mm (Canon EF 50mm f/1.4) |
| <b>Direction of view:</b> | 36°               |                                  |                              | <b>Camera height:</b> | 1.5 m AGL                  |
| <b>Nearest turbine:</b>   | 8.614 km          |                                  |                              | <b>Date and time:</b> | 13/04/21, 13:33            |

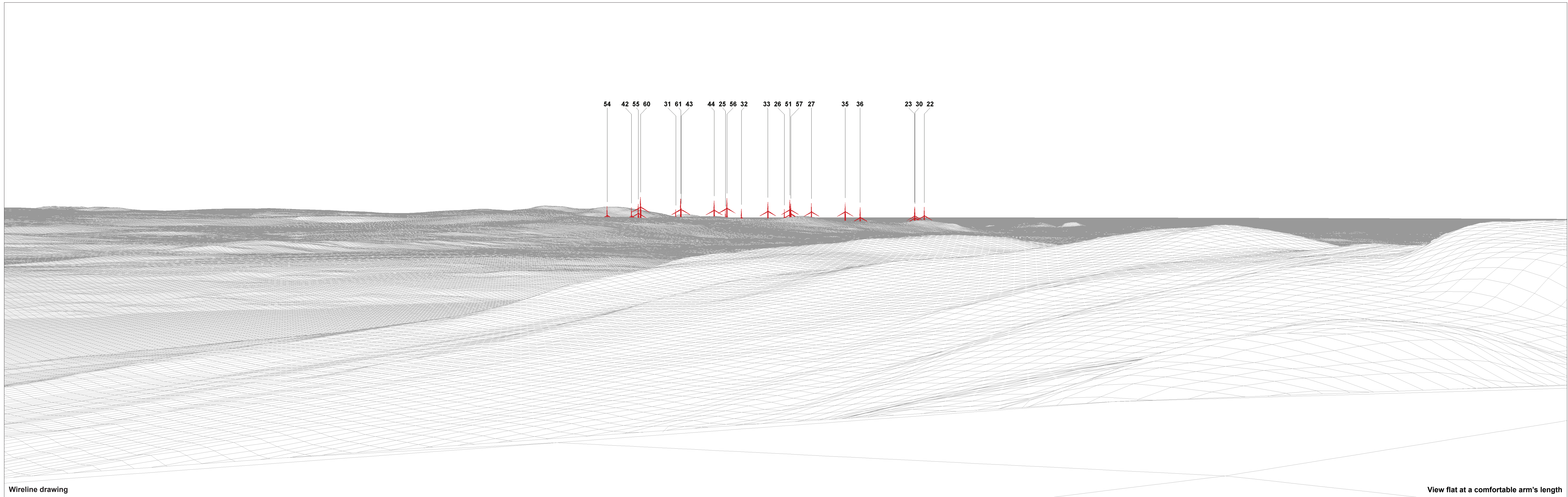
**Figure: 9.45d**  
**NS Viewpoint 9: Ben Dorrery**





|  |  |  |  |
|--|--|--|--|
| <b>OS reference:</b> 306287 E 955051 N<br><b>Eye level:</b> 245.42 m AOD<br><b>Direction of view:</b> 126°<br><b>Nearest turbine:</b> 8.614 km | <b>Horizontal field of view:</b> 90° (cylindrical projection)<br><b>Principal distance:</b> 522 mm | <b>Camera:</b> Canon EOS 5D Mark II<br><b>Lens:</b> 50mm (Canon EF 50mm f/1.4)<br><b>Camera height:</b> 1.5 m AGL<br><b>Date and time:</b> 13/04/21, 13:33 | <b>Figure: 9.45e</b><br><b>NS Viewpoint 9: Ben Dorrery</b><br><small>© Crown copyright and database rights 2021 Ordnance Survey 0100031673</small> |
|--|--|--|--|





Wireline drawing

View flat at a comfortable arm's length

OS reference: 306287 E 955051 N  
 Eye level: 245.42 m AOD  
 Direction of view: 306°  
 Nearest turbine: 8.614 km

Horizontal field of view: 53.5° (planar projection)  
 Principal distance: 812.5 mm  
 Paper size: 841 x 297 mm (half A1)  
 Correct printed image size: 820 x 260 mm

Camera: Canon EOS 5D Mark II  
 Lens: 50mm (Canon EF 50mm f/1.4)  
 Camera height: 1.5 m AGL  
 Date and time: 13/04/21, 13:33

Figure: 9.45f  
 NS Viewpoint 9: Ben Dorrery





Photomontage

View flat at a comfortable arm's length

|  |  |   |
|--|--|---|
| <b>OS reference:</b> 306287 E 955051 N | <b>Horizontal field of view:</b> 53.5° (planar projection) | <b>Camera:</b> Canon EOS 5D Mark II     |
| <b>Eye level:</b> 245.42 m AOD         | <b>Principal distance:</b> 812.5 mm                        | <b>Lens:</b> 50mm (Canon EF 50mm f/1.4) |
| <b>Direction of view:</b> 306°         | <b>Paper size:</b> 841 x 297 mm (half A1)                  | <b>Camera height:</b> 1.5 m AGL         |
| <b>Nearest turbine:</b> 8.614 km       | <b>Correct printed image size:</b> 820 x 260 mm            | <b>Date and time:</b> 13/04/21, 13:33   |

**Figure: 9.45g**  
**NS Viewpoint 9: Ben Dorrery**