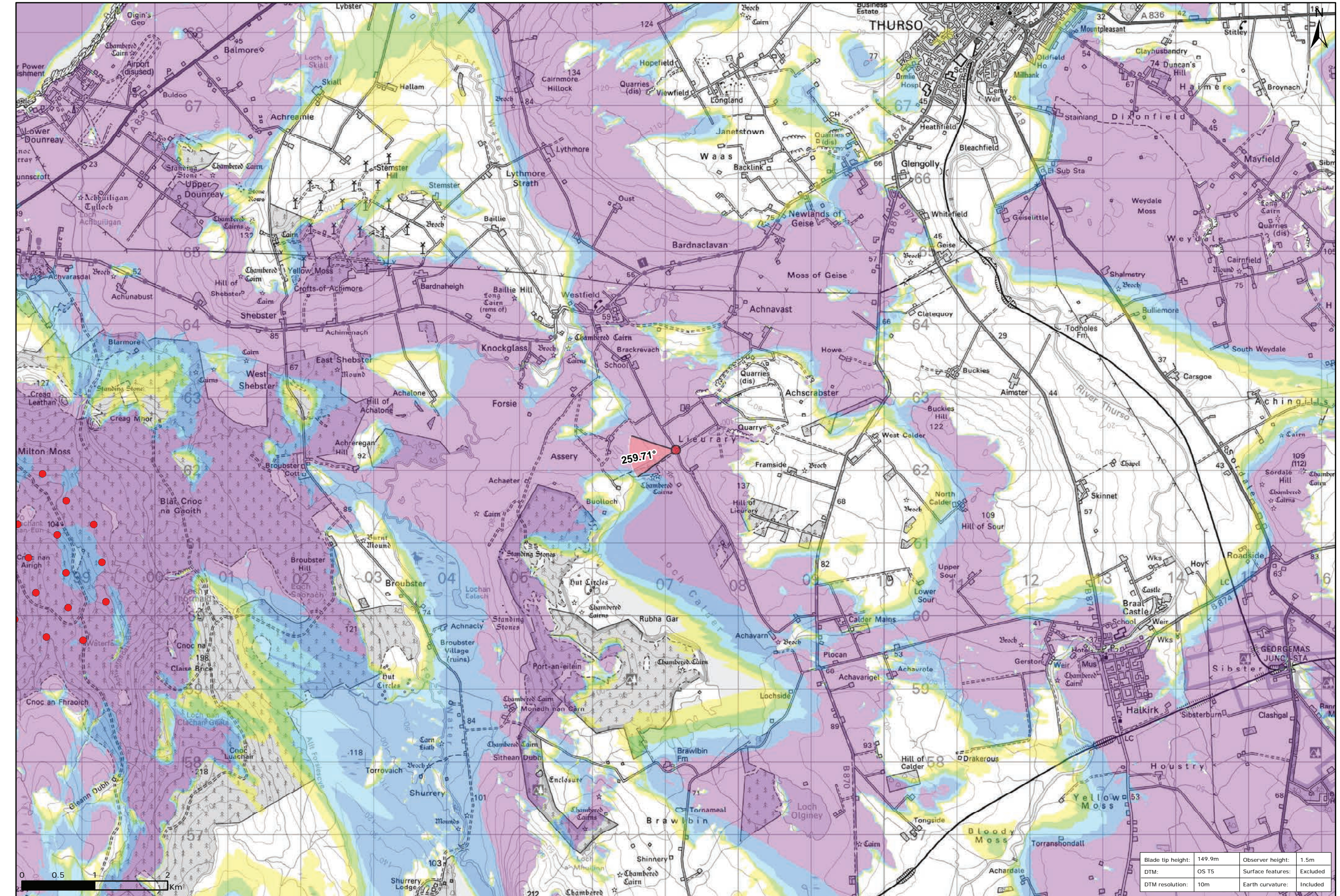


Viewpoint Location Plan Baseline Panorama  
Scale: 1:150,000



Viewpoint Location Plan  
Scale: 1:50,000 (Blade Tip ZTV)

**Legend:**

- Proposed
- 90 degree field of view viewpoint
- 53.5 degree field of view viewpoint
- Viewpoint with no Photomontage View

**Wind Farm Status (1:150,000 only):**

- Turbine Locations
- Operational / Under Construction
- Consented
- Application
- Scoping

**Blade Tip ZTV**

No. of Theoretically Visible Turbines

- 1 - 4
- 5 - 8
- 9 - 12
- 13 - 16
- 17 - 20
- 21 - 24

---

Title: Viewpoint 8: Angler's Car Park, Loch Calder

Limekiln Wind Farm S36C

Source: © Crown copyright and database rights 2021 Ordnance Survey 0100031673

Client: Infinergy

Drawn by: TH      Checked: JP

Date: 15/06/2021      Figure: 9.44a

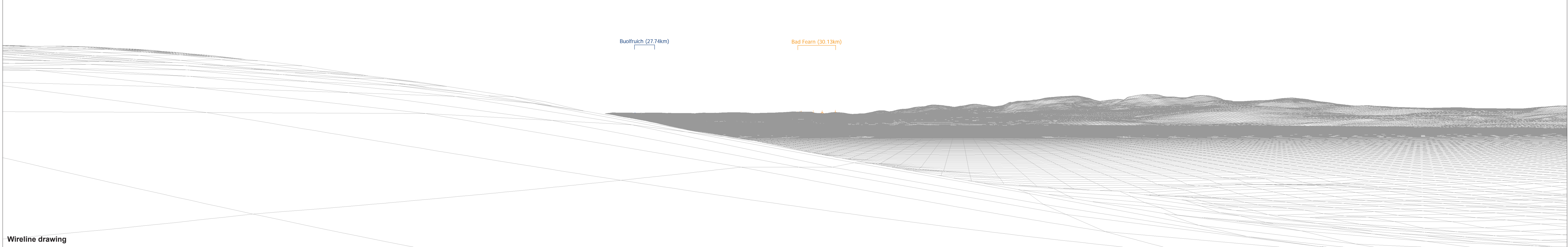
Scale: Multiple      Revision No: 0

Blade tip height: 149.9m	Observer height: 1.5m
DTM: OS T5	Surface features: Excluded
DTM resolution: 10m	Earth curvature: Included



Baseline photograph

This image provides landscape and visual context only



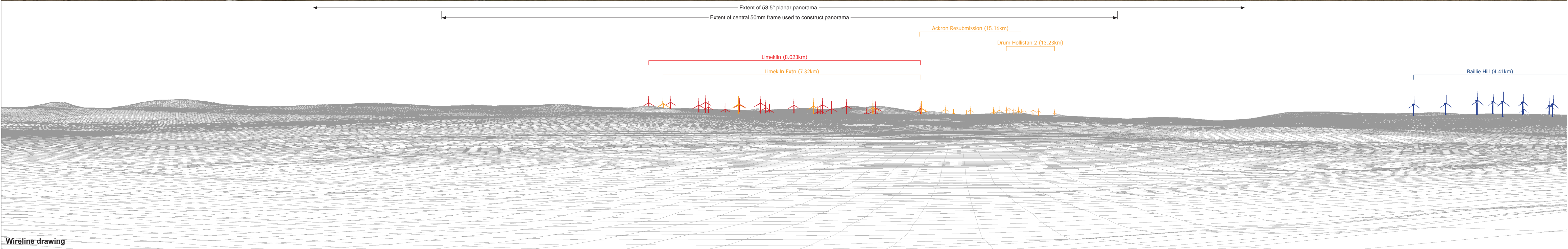
Wireline drawing

<p><b>OS reference:</b> 307144 E 962277 N  <b>Eye level:</b> 87.4 m AOD  <b>Direction of view:</b> 170°  <b>Nearest turbine:</b> 8.020 km</p>	<p><b>Horizontal field of view:</b> 90° (cylindrical projection)  <b>Principal distance:</b> 522 mm</p>	<p><b>Camera:</b> Canon EOS 5D Mark II  <b>Lens:</b> 50mm (Canon EF 50mm f/1.4)  <b>Camera height:</b> 1.5 m AGL  <b>Date and time:</b> 12/04/21, 13:04</p>	<p><b>Figure: 9.44b</b>  <b>NS Viewpoint 8: Angler's Car Park, Loch Calder</b></p>
-----------------------------------------------------------------------------------------------------------------------------------------------------------	-------------------------------------------------------------------------------------------------------------	-------------------------------------------------------------------------------------------------------------------------------------------------------------------------	----------------------------------------------------------------------------------------



Baseline photograph

This image provides landscape and visual context only



Wireline drawing

<b>OS reference:</b> 307144 E 962277 N	<b>Horizontal field of view:</b> 90° (cylindrical projection)	<b>Camera:</b> Canon EOS 5D Mark II
<b>Eye level:</b> 87.4 m AOD	<b>Principal distance:</b> 522 mm	<b>Lens:</b> 50mm (Canon EF 50mm f/1.4)
<b>Direction of view:</b> 260°		<b>Camera height:</b> 1.5 m AGL
<b>Nearest turbine:</b> 8.020 km		<b>Date and time:</b> 12/04/21, 13:04

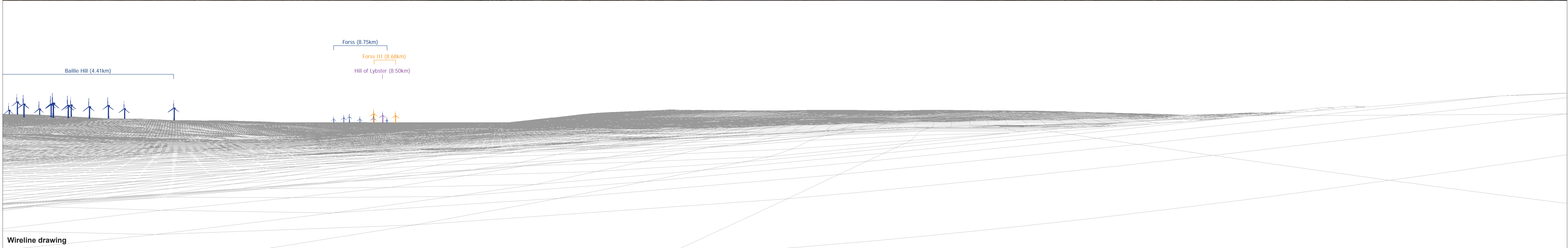
**Figure: 9.44c**  
NS Viewpoint 8: Angler's Car Park, Loch Calder

© Crown copyright and database rights 2021 Ordnance Survey 0100031673



Baseline photograph

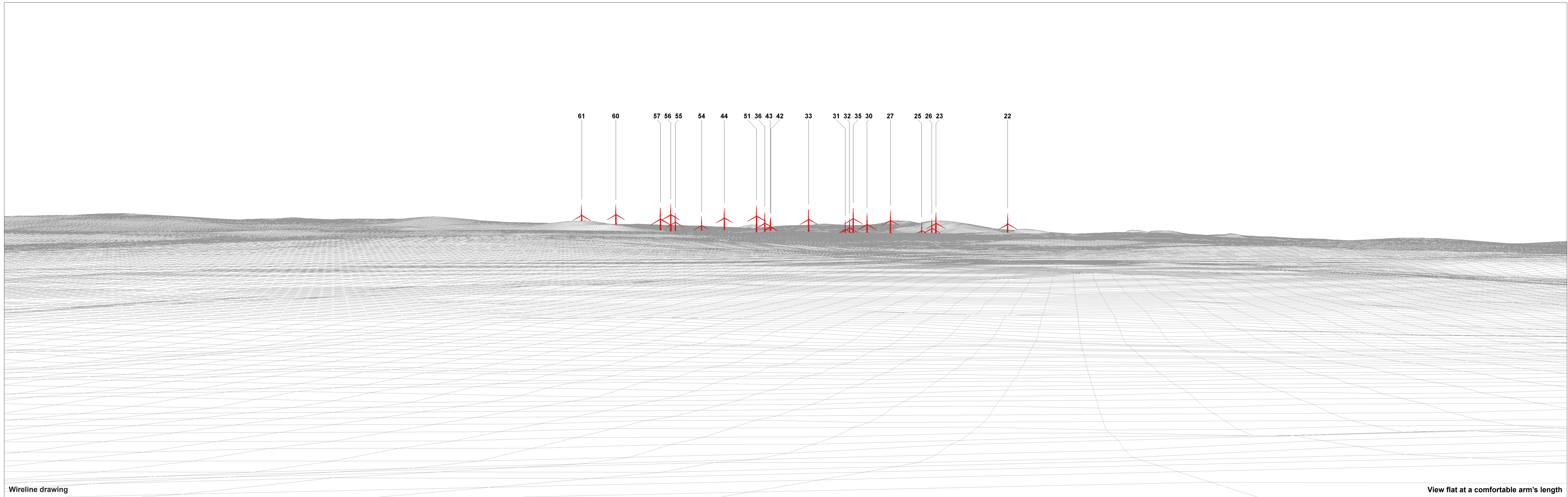
This image provides landscape and visual context only



Wireline drawing

<b>OS reference:</b>	307144 E 962277 N	<b>Horizontal field of view:</b>	90° (cylindrical projection)	<b>Camera:</b>	Canon EOS 5D Mark II
<b>Eye level:</b>	87.4 m AOD	<b>Principal distance</b>	522 mm	<b>Lens:</b>	50mm (Canon EF 50mm f/1.4)
<b>Direction of view:</b>	350°			<b>Camera height:</b>	1.5 m AGL
<b>Nearest turbine:</b>	8.020 km			<b>Date and time:</b>	12/04/21, 13:04

**Figure: 9.44d**  
NS Viewpoint 8: Angler's Car Park, Loch Calder



Wireline drawing

View flat at a comfortable arm's length

OS reference: 307144 E 962277 N  
 Eye level: 87.4 m AOD  
 Direction of view: 260°  
 Nearest turbine: 8.020 km

Horizontal field of view: 53.5° (planar projection)  
 Principal distance: 812.5 mm  
 Paper size: 841 x 297 mm (half A1)  
 Correct printed image size: 820 x 260 mm

Camera: Canon EOS 5D Mark II  
 Lens: 50mm (Canon EF 50mm f/1.4)  
 Camera height: 1.5 m AGL  
 Date and time: 12/04/21, 13:04

Figure: 9.44e  
 NS Viewpoint 8: Angler's Car Park, Loch Calder



Photomontage

View flat at a comfortable arm's length

<b>OS reference:</b> 307144 E 962277 N	<b>Horizontal field of view:</b> 53.5° (planar projection)	<b>Camera:</b> Canon EOS 5D Mark II
<b>Eye level:</b> 87.4 m AOD	<b>Principal distance:</b> 812.5 mm	<b>Lens:</b> 50mm (Canon EF 50mm f/1.4)
<b>Direction of view:</b> 260°	<b>Paper size:</b> 841 x 297 mm (half A1)	<b>Camera height:</b> 1.5 m AGL
<b>Nearest turbine:</b> 8.020 km	<b>Correct printed image size:</b> 820 x 260 mm	<b>Date and time:</b> 12/04/21, 13:04

**Figure: 9.44f**  
**NS Viewpoint 8: Angler's Car Park, Loch Calder**