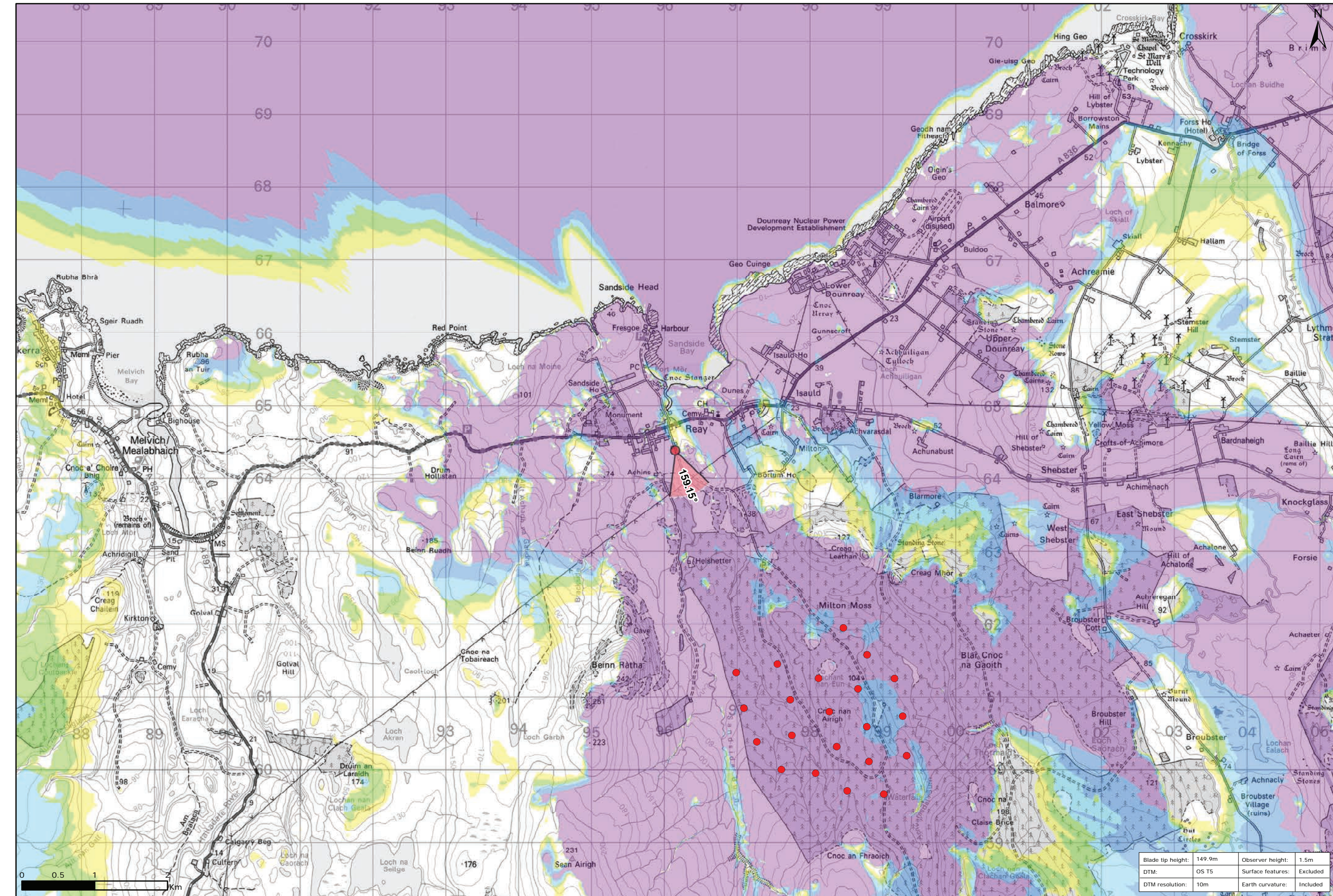


Viewpoint Location Plan Baseline Panorama
Scale: 1:150,000



Viewpoint Location Plan
Scale: 1:50,000 (Blade Tip ZTV)

Legend:

- Proposed
- ▲ 90 degree field of view viewpoint
- ▼ 53.5 degree field of view viewpoint
- ⊙ Viewpoint with no Photomontage View

Wind Farm Status (1:150,000 only):

- Turbine Locations
- Operational / Under Construction
- Consented
- Application
- Scoping

Blade Tip ZTV

No. of Theoretically Visible Turbines

- 1 - 4
- 5 - 8
- 9 - 12
- 13 - 16
- 17 - 20
- 21 - 24

Title: Viewpoint 2: Reay Footpath

Project: Limekiln Wind Farm S36C

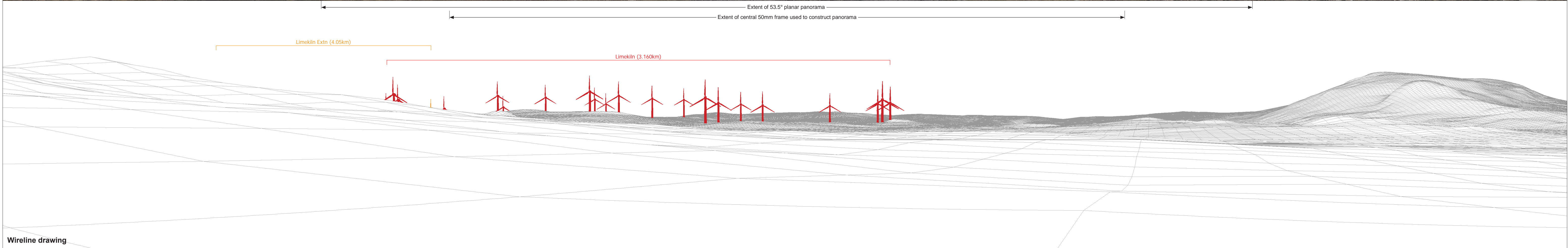
Source: © Crown copyright and database rights 2021 Ordnance Survey 0100031673

Client: Infinergy

Drawn by: TH **Checked:** JP

Date: 15/06/2021 **Figure:** 9.38a

Scale: Multiple **Revision No:** 0



OS reference: 296149 E 964385N
 Eye level: 29.08 m AOD
 Direction of view: 159°
 Nearest turbine: 3.160 km

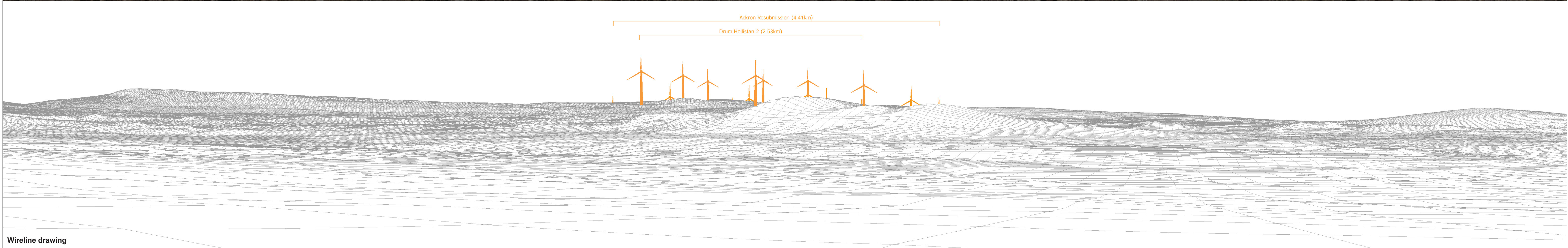
Horizontal field of view: 90° (cylindrical projection)
 Principal distance: 522 mm

Camera: Canon EOS 5D Mark II
 Lens: 50mm (Canon EF 50mm f/1.4)
 Camera height: 1.5 m AGL
 Date and time: 13/04/21, 10:19

Figure: 9.38b
 NS Viewpoint 2: Reay Footpath

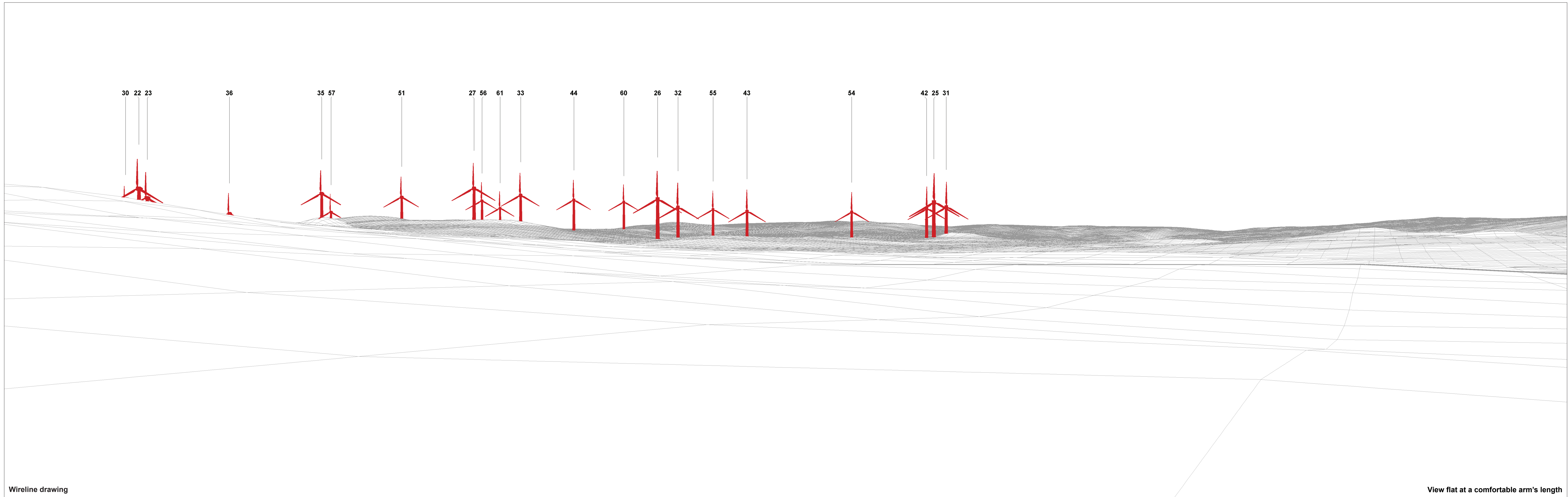


Baseline photograph



OS reference: 296149 E 964385N	Horizontal field of view: 90° (cylindrical projection)	Camera: Canon EOS 5D Mark II
Eye level: 29.08 m AOD	Principal distance: 522 mm	Lens: 50mm (Canon EF 50mm f/1.4)
Direction of view: 249°		Camera height: 1.5 m AGL
Nearest turbine: 3.160 km		Date and time: 13/04/21, 10:19

Figure: 9.38c
NS Viewpoint 2: Reay Footpath



Wireline drawing

View flat at a comfortable arm's length

OS reference: 296149 E 964385N
 Eye level: 29.08 m AOD
 Direction of view: 159°
 Nearest turbine: 3.160 km

Horizontal field of view: 53.5° (planar projection)
 Principal distance: 812.5 mm
 Paper size: 841 x 297 mm (half A1)
 Correct printed image size: 820 x 260 mm

Camera: Canon EOS 5D Mark II
 Lens: 50mm (Canon EF 50mm f/1.4)
 Camera height: 1.5 m AGL
 Date and time: 13/04/21, 10:19

Figure: 9.38d
 NS Viewpoint 2: Reay Footpath



Photomontage

View flat at a comfortable arm's length

OS reference: 296149 E 964385N	Horizontal field of view: 53.5° (planar projection)	Camera: Canon EOS 5D Mark II
Eye level: 29.08 m AOD	Principal distance: 812.5 mm	Lens: 50mm (Canon EF 50mm f/1.4)
Direction of view: 159°	Paper size: 841 x 297 mm (half A1)	Camera height: 1.5 m AGL
Nearest turbine: 3.160 km	Correct printed image size: 820 x 260 mm	Date and time: 13/04/21, 10:19

Figure: 9.38e
NS Viewpoint 2: Reay Footpath