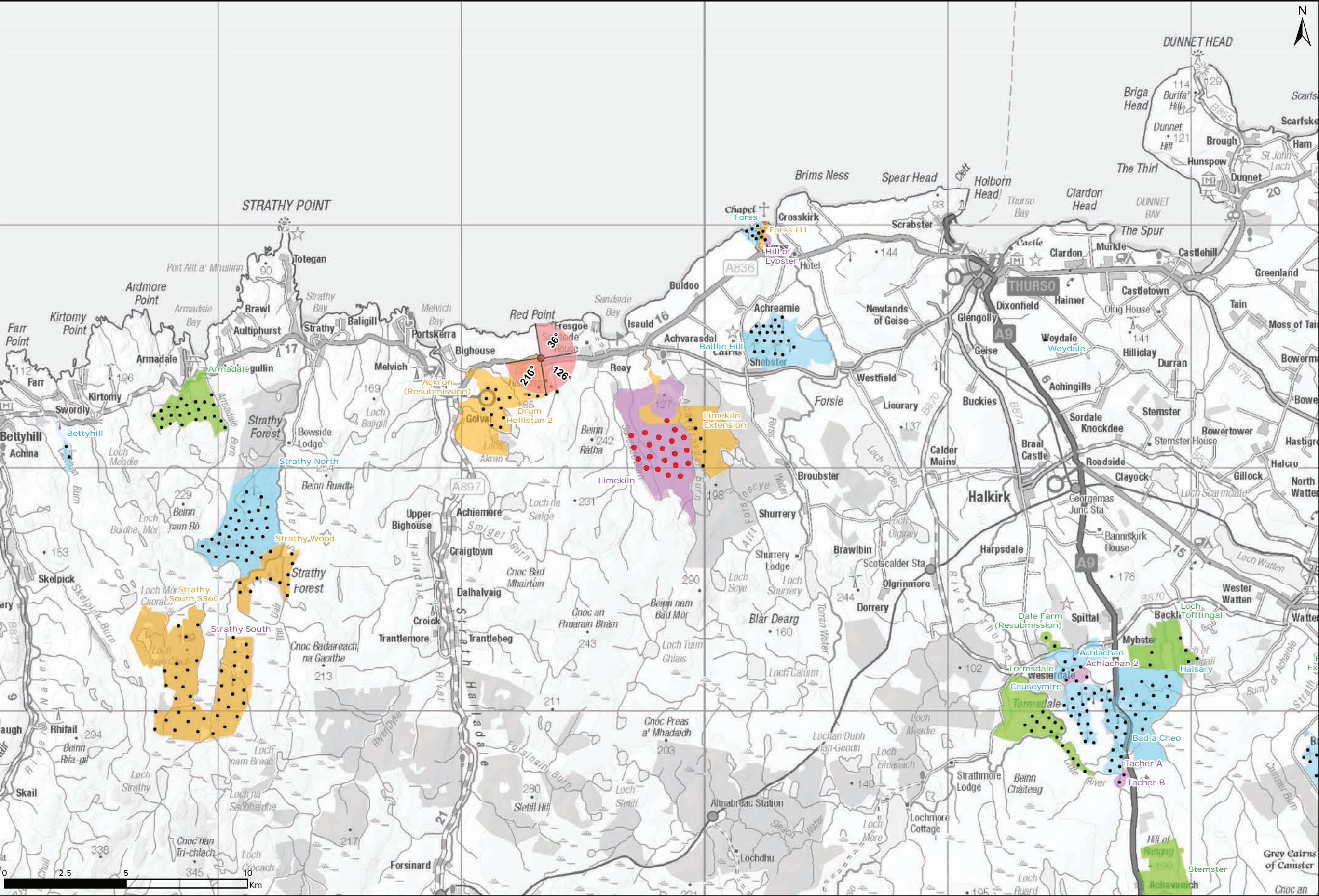
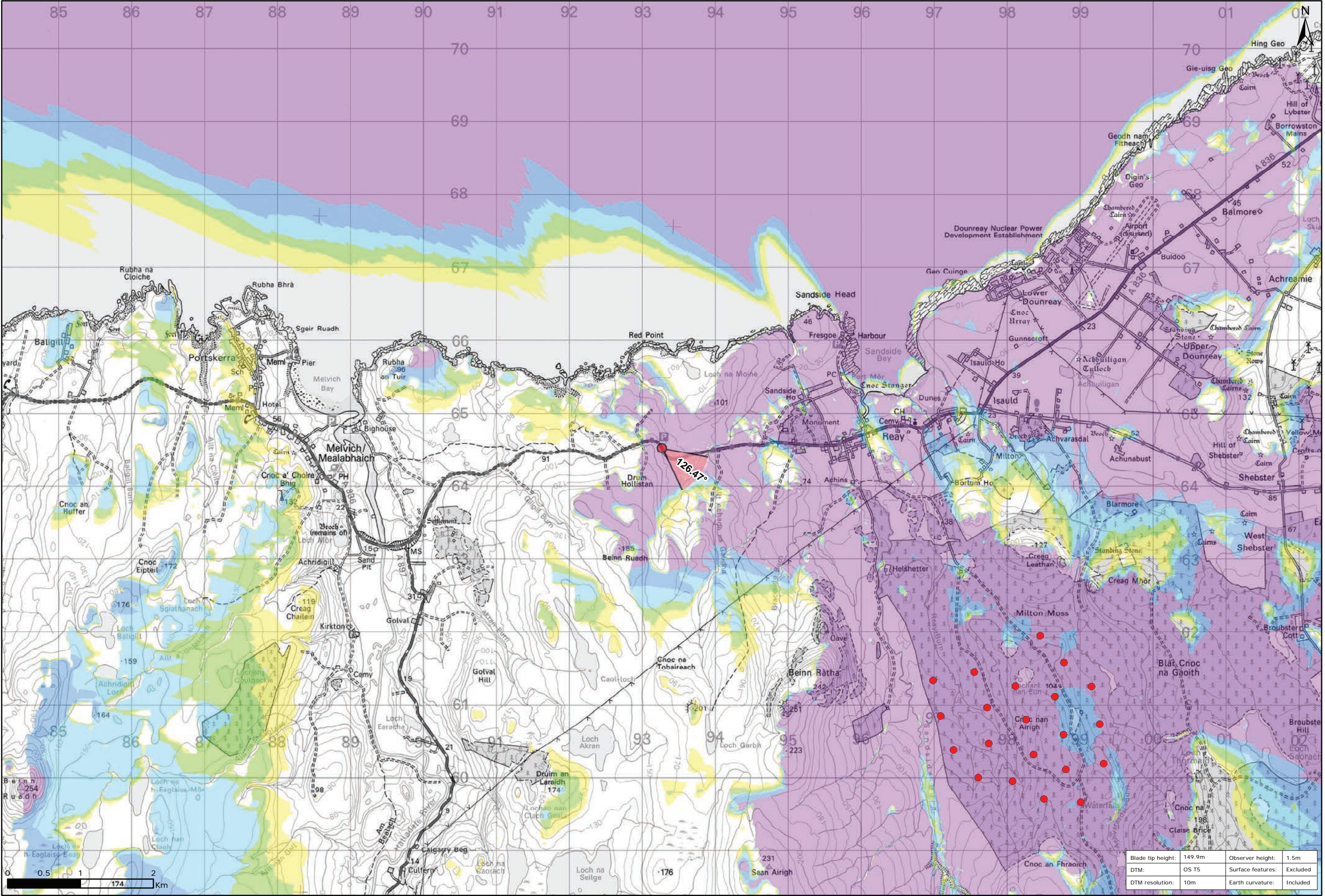


Figure 9.37a: Viewpoint 1: A836 Layby at Drum Hollistan



Viewpoint Location Plan Baseline Panorama
Scale: 1: 150,000



Viewpoint Location Plan
Scale: 1: 50,000 (Blade Tip ZTV)

Legend:

- Proposed
- 90 degree field of view viewpoint
- 53.5 degree field of view viewpoint
- Viewpoint with no Photomontage View

Wind Farm Status (1:150,000 only):

- Turbine Locations
- Operational / Under Construction
- Consented
- Application
- Scoping

Blade Tip ZTV

No. of Theoretically Visible Turbines

1 - 4
5 - 8
9 - 12
13 - 16
17 - 20
21 - 24

Title:
Viewpoint 1: A836 Layby at Drum Hollistan

Limekiln Wind Farm S36C

Source:
© Crown copyright and database rights
2021 Ordnance Survey 0100031673

Client:
Infenergy

Drawn by: TH	Checked: JP
-----------------	----------------

Date:
15/06/2021

Figure:
9.37a

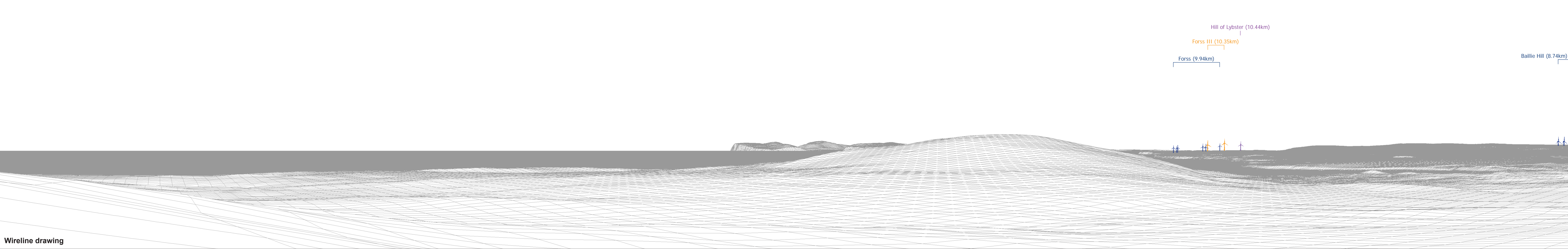
Scale: Multiple	Revision No: 0
--------------------	-------------------

INFINERGY



Baseline photograph

This image provides landscape and visual context only



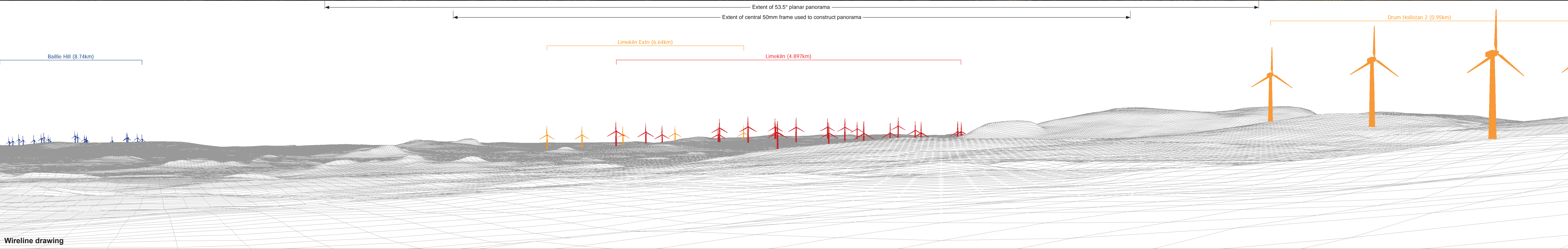
Wireline drawing

OS reference:	293267 E 964523 N	Horizontal field of view:	90° (cylindrical projection)	Camera:	Canon EOS 5D Mark II
Eye level:	90.5 m AOD	Principal distance	522 mm	Lens:	50mm (Canon EF 50mm f/1.4)
Direction of view:	36°			Camera height:	1.5 m AGL
Nearest turbine:	4.897 km			Date and time:	16/04/21, 13:42

Figure: 9.37b
NS Viewpoint 1: A836 Layby at Drum Hollistan



This image provides landscape and visual context only



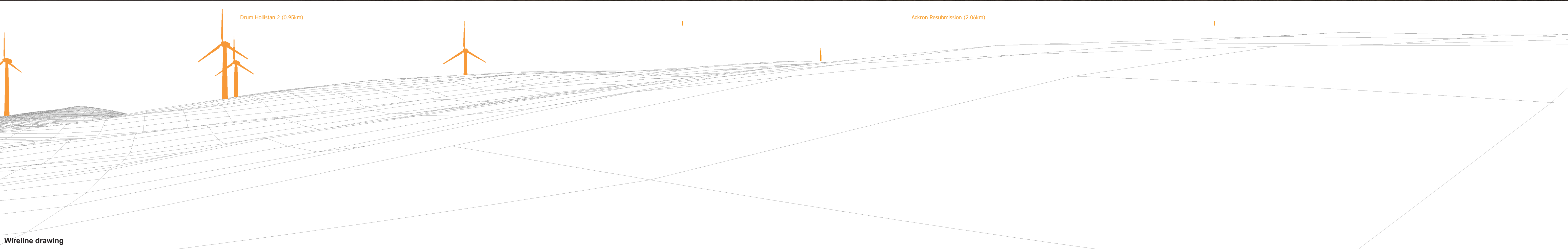
OS reference:	293267 E 964523 N	Horizontal field of view:	90° (cylindrical projection)	Camera:	Canon EOS 5D Mark II
Eye level:	90.5 m AOD	Principal distance	522 mm	Lens:	50mm (Canon EF 50mm f/1.4)
Direction of view:	126°			Camera height:	1.5 m AGL
Nearest turbine:	4.897 km			Date and time:	16/04/21, 13:42

Figure: 9.37c
NS Viewpoint 1: A836 Layby at Drum Hollistan



Baseline photograph

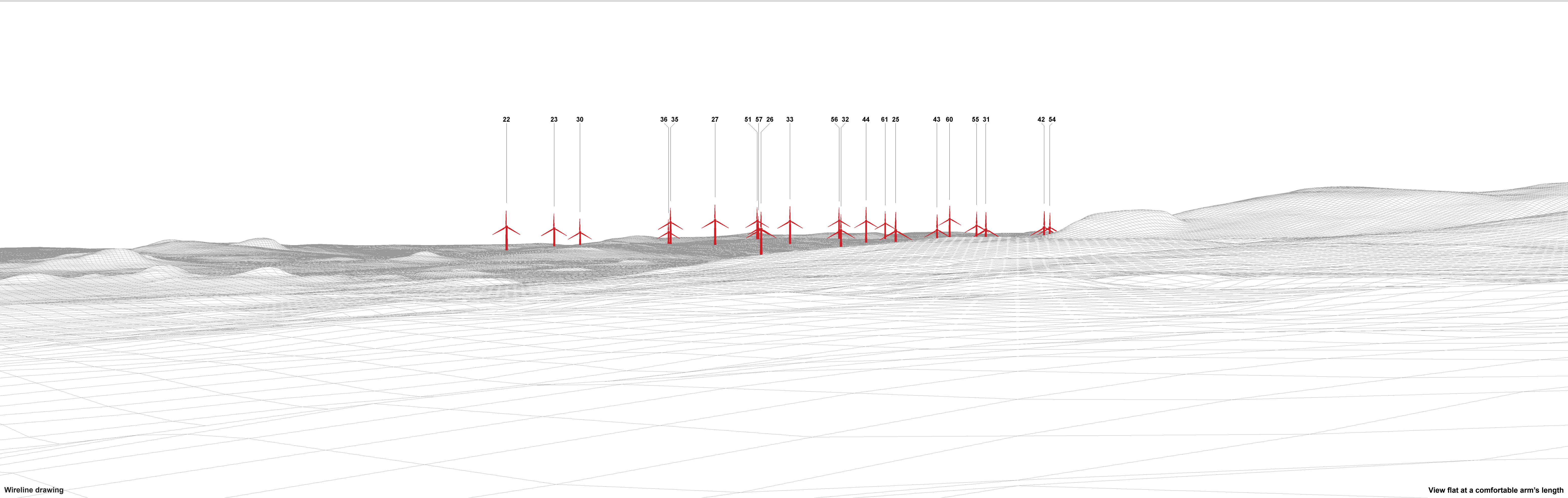
This image provides landscape and visual context only



Wireline drawing

OS reference:	293267 E 964523 N	Horizontal field of view:	90° (cylindrical projection)	Camera:	Canon EOS 5D Mark II
Eye level:	90.5 m AOD	Principal distance	522 mm	Lens:	50mm (Canon EF 50mm f/1.4)
Direction of view:	216°			Camera height:	1.5 m AGL
Nearest turbine:	4.897 km			Date and time:	16/04/21, 13:42

Figure: 9.37d
NS Viewpoint 1: A836 Layby at Drum Hollistan



Wireline drawing

View flat at a comfortable arm's length

OS reference:	293267 E 964523 N	Horizontal field of view:	53.5° (planar projection)	Camera:	Canon EOS 5D Mark II
Eye level:	90.5 m AOD	Principal distance	812.5 mm	Lens:	50mm (Canon EF 50mm f/1.4)
Direction of view:	126°	Paper size:	841 x 297 mm (half A1)	Camera height:	1.5 m AGL
Nearest turbine:	4.897 km	Correct printed image size:	820 x 260 mm	Date and time:	16/04/21, 13:42

Figure: 9.37e
NS Viewpoint 1: A836 Layby at Drum Hollistan



Photomontage

View flat at a comfortable arm's length

OS reference:	293267 E 964523 N	Horizontal field of view:	53.5° (planar projection)	Camera:	Canon EOS 5D Mark II
Eye level:	90.5 m AOD	Principal distance	812.5 mm	Lens:	50mm (Canon EF 50mm f/1.4)
Direction of view:	126°	Paper size:	841 x 297 mm (half A1)	Camera height:	1.5 m AGL
Nearest turbine:	4.897 km	Correct printed image size:	820 x 260 mm	Date and time:	16/04/21, 13:42

Figure: 9.37f
NS Viewpoint 1: A836 Layby at Drum Hollistan