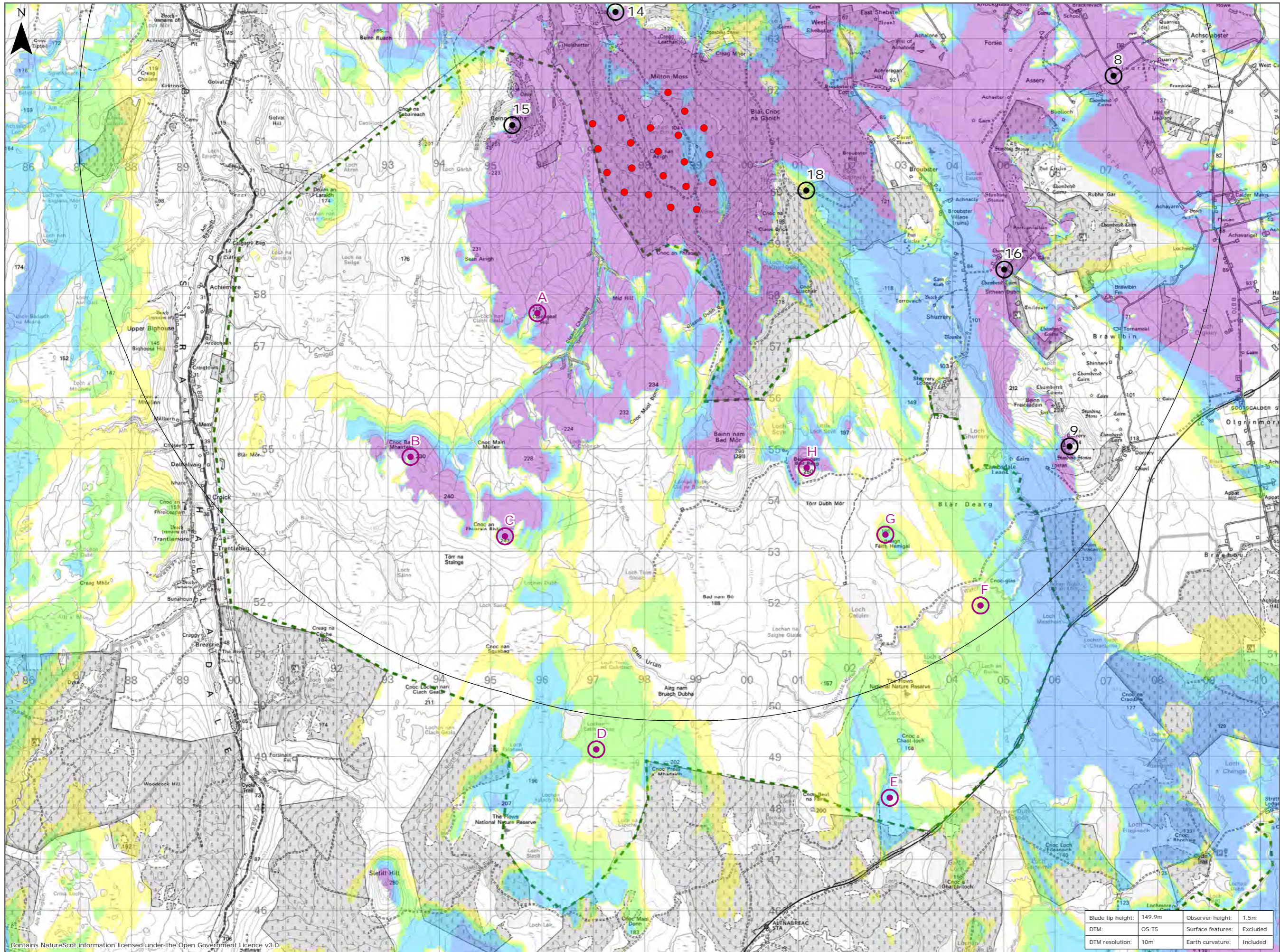


Figure 9.14: Wild Land Area 39 with Blade Tip ZTV and Viewpoints



Legend:

- Proposed Turbine
 - 10km Distance Radii
 - 40km Study Area
 - Wild Land Area
- Blade Tip ZTV
No. of Blade Tips Theoretically Visible
- 1 - 4
 - 5 - 8
 - 9 - 12
 - 13 - 16
 - 17 - 21
- LVIA Viewpoint
 - Wild Land Assessment Viewpoint
- 8. Angler's Car Park, Loch Calder
 - 9. Ben Dorrery
 - 14. Borlum Hill
 - 15. Beinn Ratha
 - 16. Shurrery
 - 18. Broubster Forest
- A. Clachgeal Hill
 - B. Cnoc Bad Mhairtein
 - C. Cnoc an Fhuairin
 - D. Lochan Ealach Beag
 - E. Caol Loch
 - F. Loch Meadhoin
 - G. Braich Feith Hemigal
 - H. Beinn Nam Bad Beag

Title:
Wild Land Area 39 with ZTV and
Wild Land Viewpoints

Limekiln Wind Farm S36C

Source:
© Crown copyright and database rights
2021 Ordnance Survey 0100031673.

Client:
Infinergy

| | |
|-----------------|----------------|
| Drawn by: TH | Checked: JP |
|-----------------|----------------|

| | |
|---------------------|-----------------|
| Date: 15/06/2021 | Figure: 9.14 |
|---------------------|-----------------|

| | |
|----------------------|-------------------|
| Scale: 0 0.5 1 km | Revision No: 0 |
|----------------------|-------------------|

| | | | |
|-------------------|--------|-------------------|----------|
| Blade tip height: | 149.9m | Observer height: | 1.5m |
| DTM: | OS T5 | Surface features: | Excluded |
| DTM resolution: | 10m | Earth curvature: | Included |

Contains NatureScot information licensed under the Open Government Licence v3.0.