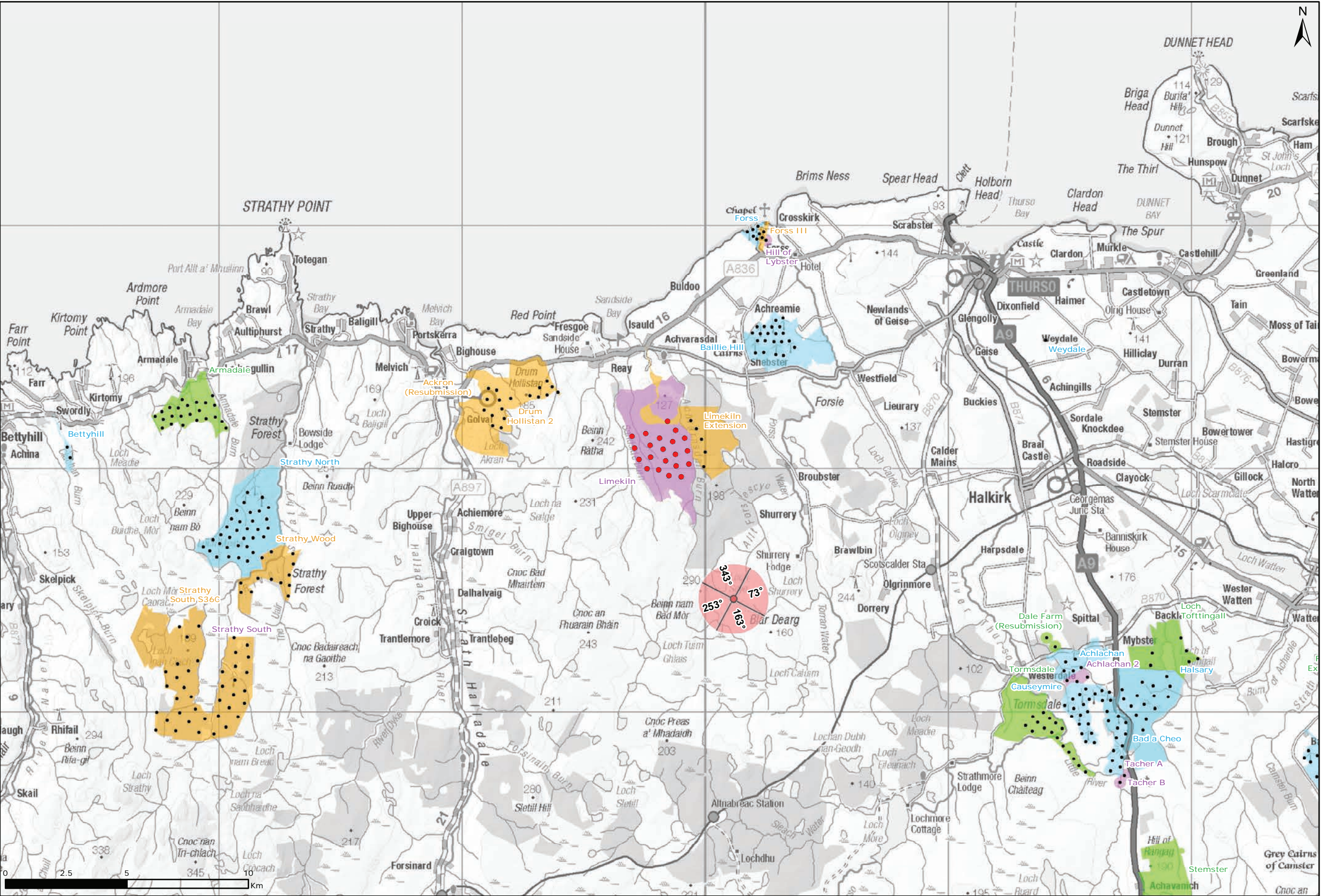
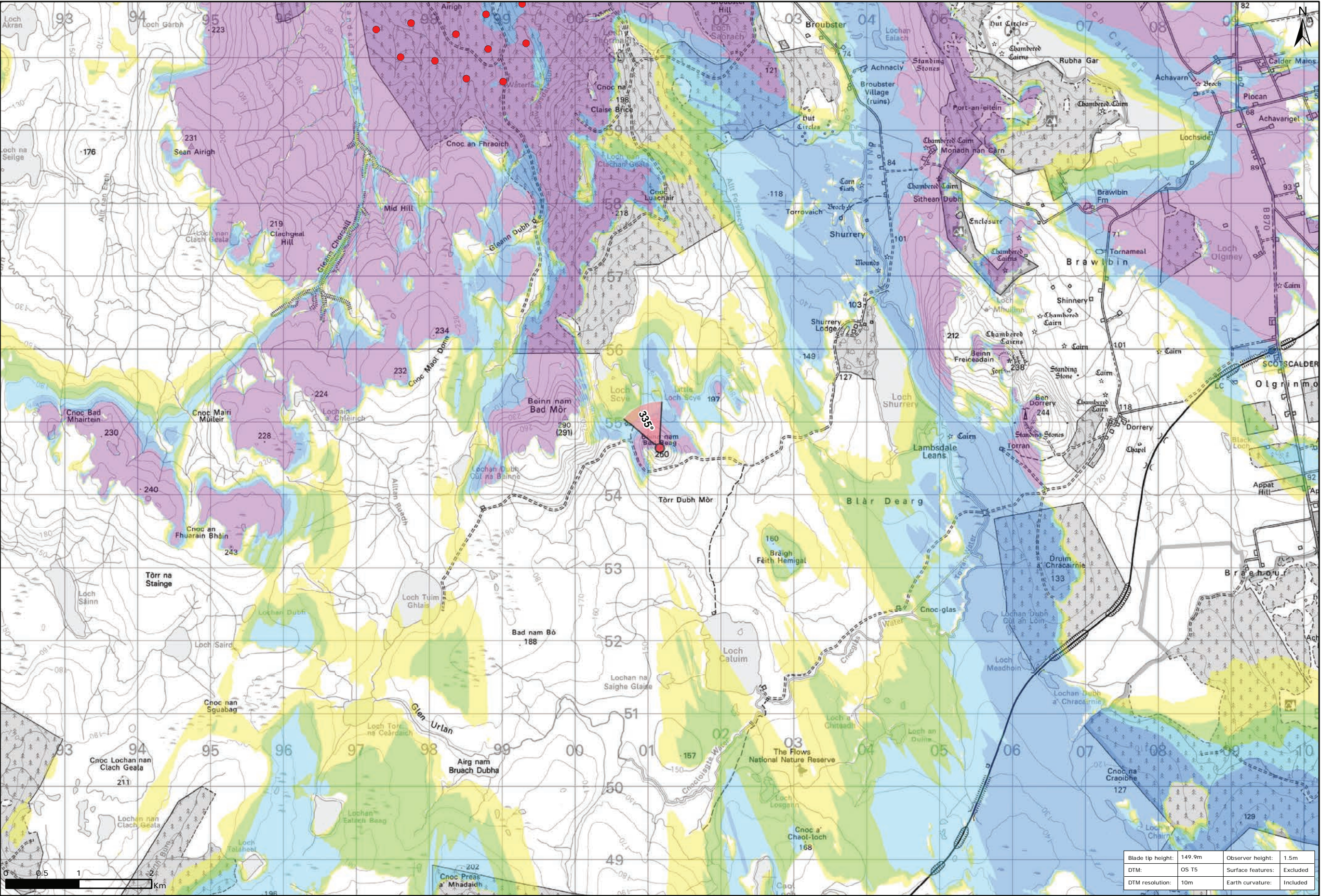


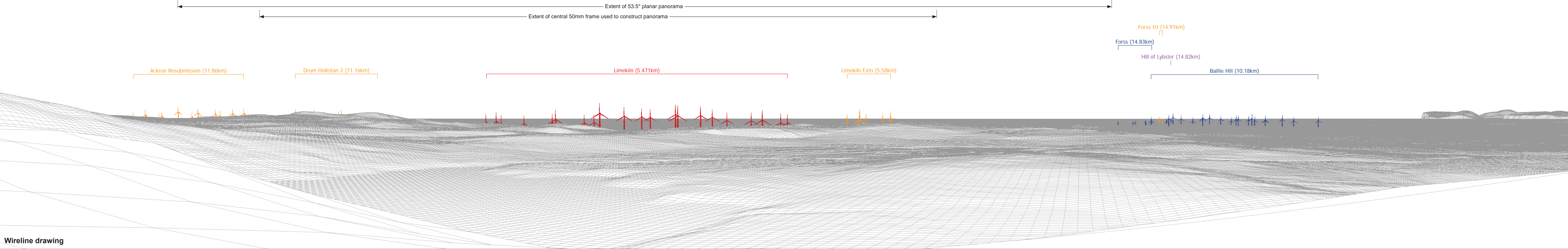
Figure 9.116a: Viewpoint H: Beinn Nam Bad Beag



Viewpoint Location Plan Baseline Panorama
Scale: 1:150,000



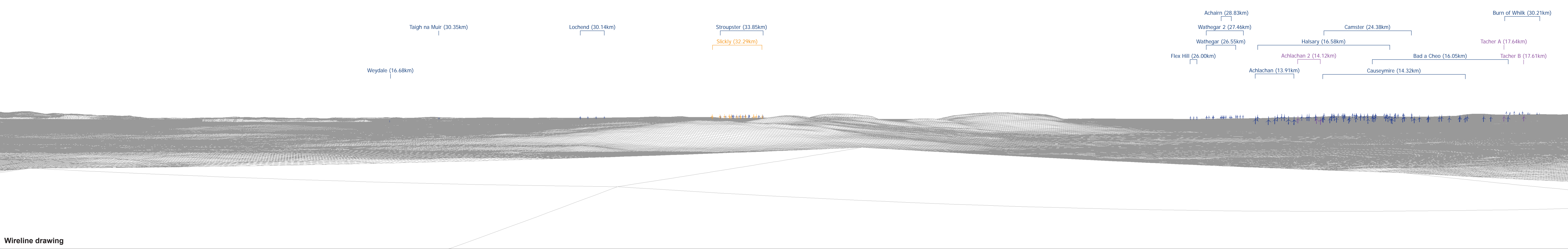
Viewpoint Location Plan
Scale: 1:50,000 (Blade Tip ZTV)



OS reference:	301162 E 954636 N	Horizontal field of view:	90° (cylindrical projection)	Camera:	Canon EOS 6D
Eye level:	254.29 m AOD	Principal distance	522 mm	Lens:	50mm (Canon EF 50mm f/1.4)
Direction of view:	343°			Camera height:	1.5 m AGL
Nearest turbine:	5.471 km			Date and time:	15/03/16, 12:56

Figure: 9.116b
Viewpoint H: Beinn nam Bad Beag

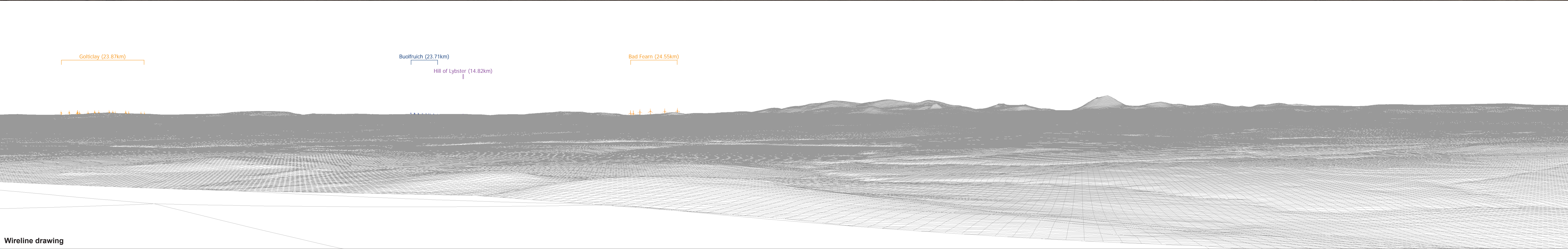
© Crown copyright and database rights 2016 Ordnance Survey 0100031673





Baseline photograph

This image provides landscape and visual context only



Wireline drawing

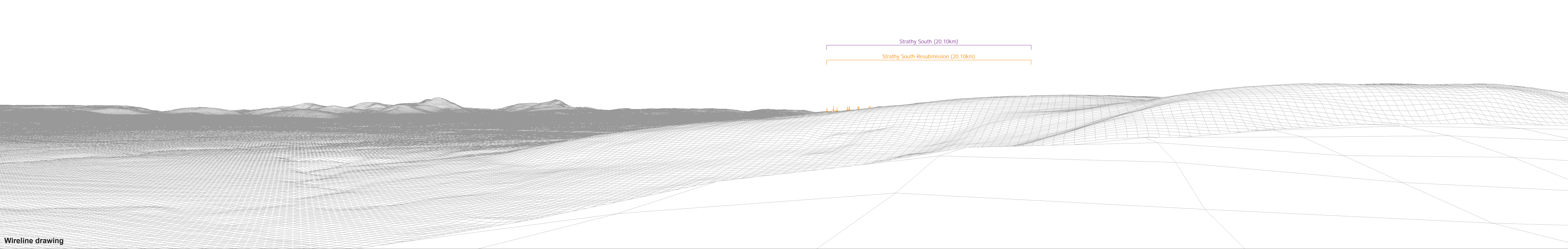
OS reference:	301162 E 954636 N	Horizontal field of view:	90° (cylindrical projection)	Camera:	Canon EOS 6D
Eye level:	254.29 m AOD	Principal distance	522 mm	Lens:	50mm (Canon EF 50mm f/1.4)
Direction of view:	163°			Camera height:	1.5 m AGL
Nearest turbine:	5.471 km			Date and time:	15/03/16, 12:56

Figure: 9.116d
Viewpoint H: Beinn nam Bad Beag



Baseline photograph

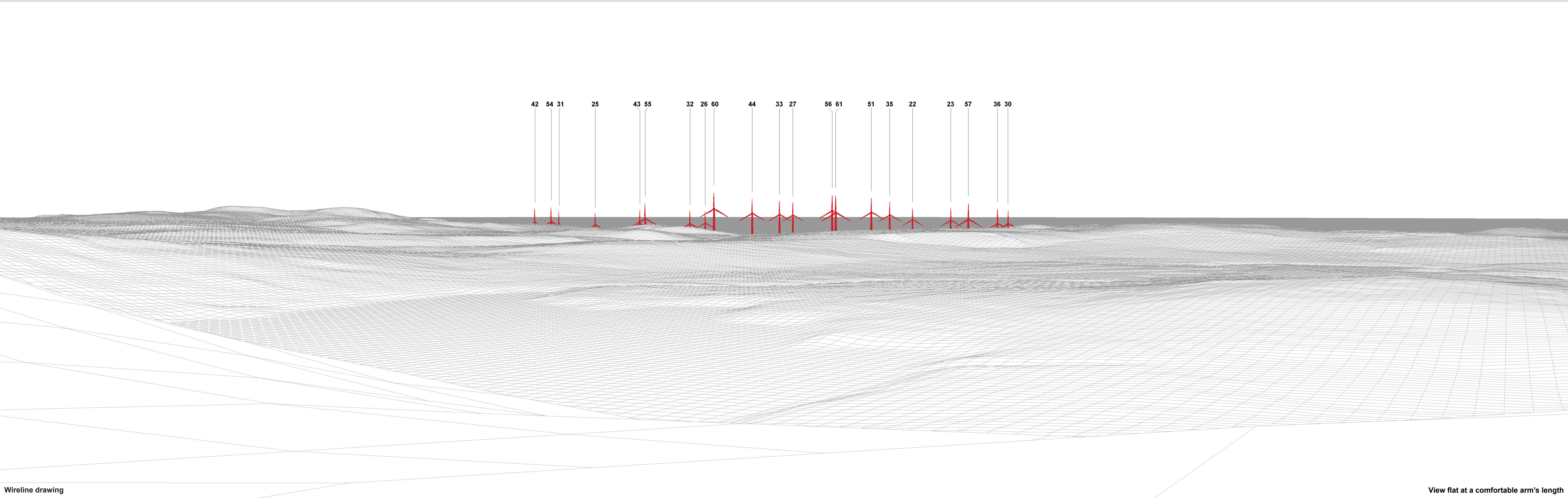
This image provides landscape and visual context only



Wireline drawing

OS reference:	301162 E 954636 N	Horizontal field of view:	90° (cylindrical projection)	Camera:	Canon EOS 6D
Eye level:	254.29 m AOD	Principal distance	522 mm	Lens:	50mm (Canon EF 50mm f/1.4)
Direction of view:	253°			Camera height:	1.5 m AGL
Nearest turbine:	5.471 km			Date and time:	15/03/16, 12:56

Figure: 9.116e
Viewpoint H: Beinn nam Bad Beag



Wireline drawing

View flat at a comfortable arm's length

OS reference:	301162 E 954636 N	Horizontal field of view:	53.5° (planar projection)	Camera:	Canon EOS 6D
Eye level:	254.29 m AOD	Principal distance	812.5 mm	Lens:	50mm (Canon EF 50mm f/1.4)
Direction of view:	335°	Paper size:	841 x 297 mm (half A1)	Camera height:	1.5 m AGL
Nearest turbine:	5.471 km	Correct printed image size:	820 x 260 mm	Date and time:	15/03/16, 12:56

Figure: 9.116f
Viewpoint H: Beinn nam Bad Beag



Photomontage

View flat at a comfortable arm's length

OS reference:	301162 E 954636 N	Horizontal field of view:	53.5° (planar projection)	Camera:	Canon EOS 6D
Eye level:	254.29 m AOD	Principal distance	812.5 mm	Lens:	50mm (Canon EF 50mm f/1.4)
Direction of view:	335°	Paper size:	841 x 297 mm (half A1)	Camera height:	1.5 m AGL
Nearest turbine:	5.471 km	Correct printed image size:	820 x 260 mm	Date and time:	15/03/16, 12:56

Figure: 9.116g
Viewpoint H: Beinn nam Bad Beag