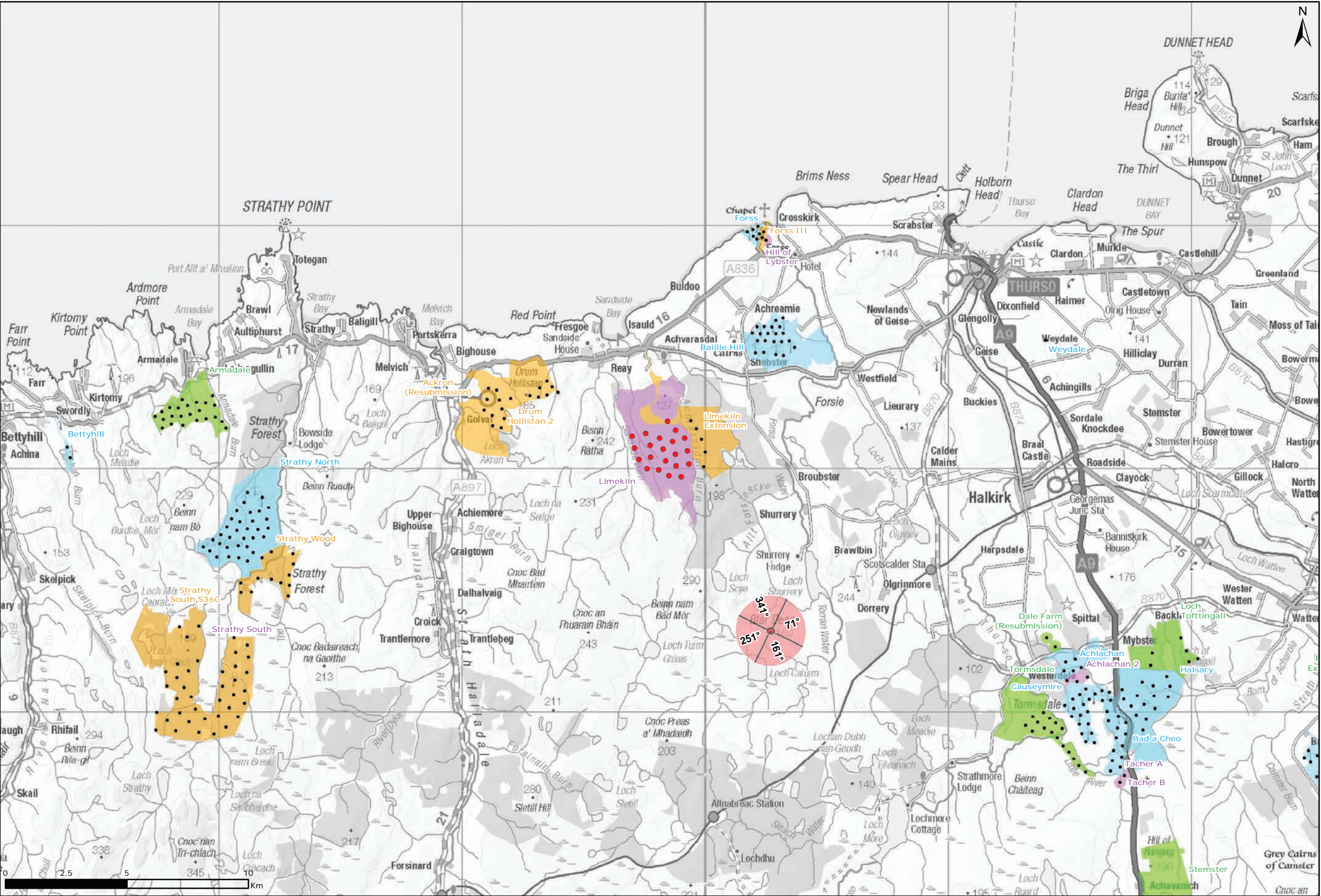
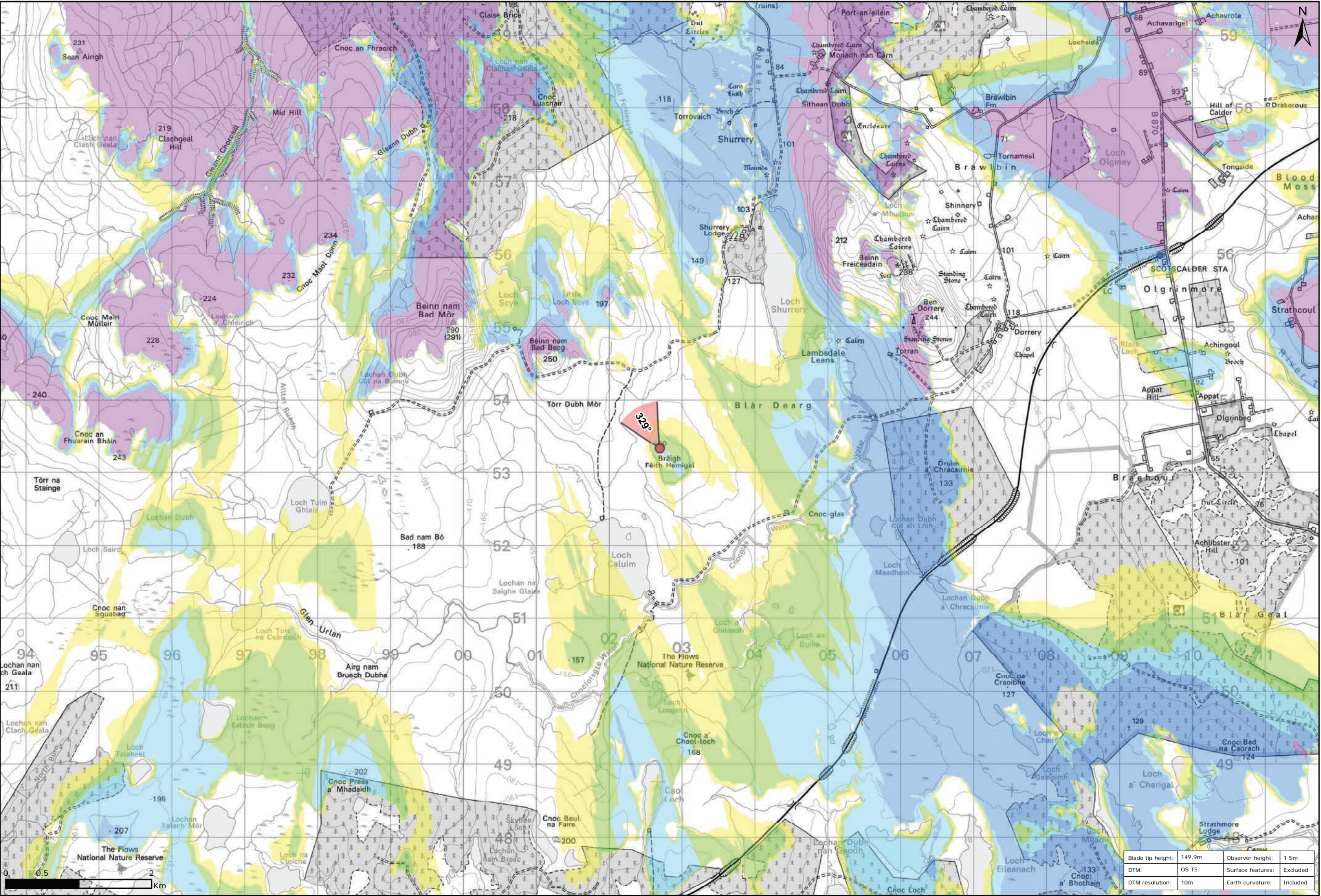


Figure 9.115a: Viewpoint G: Braich Feith Hemigal



Viewpoint Location Plan Baseline Panorama
Scale: 1:150,000



Viewpoint Location Plan
Scale: 1:50,000 (Blade Tip ZTV)

Legend:

- Proposed
- 90 degree field of view viewpoint
- 53.5 degree field of view viewpoint
- Viewpoint with no Photomontage View
- Wind Farm Status (1:150,000 only):
 - Turbine Locations
 - Operational / Under Construction
 - Consented
 - Application
 - Scoping

Blade Tip ZTV

No. of Theoretically Visible Turbines

- 1 - 4
- 5 - 8
- 9 - 12
- 13 - 16
- 17 - 20
- 21 - 24

Title:
Viewpoint G: Braich Feith Hemigal

Limekiln Wind Farm S36C

Source:
© Crown copyright and database rights
2021 Ordnance Survey 0100031673

Client:
Infenergy

Drawn by:
TH

Checked:
JP

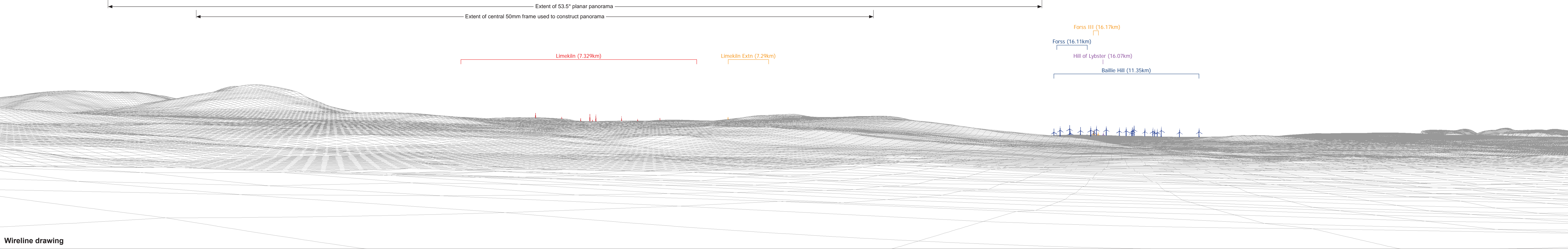
Date:
15/06/2021

Figure:
9.115a

Scale:
Multiple

Revision No:
0

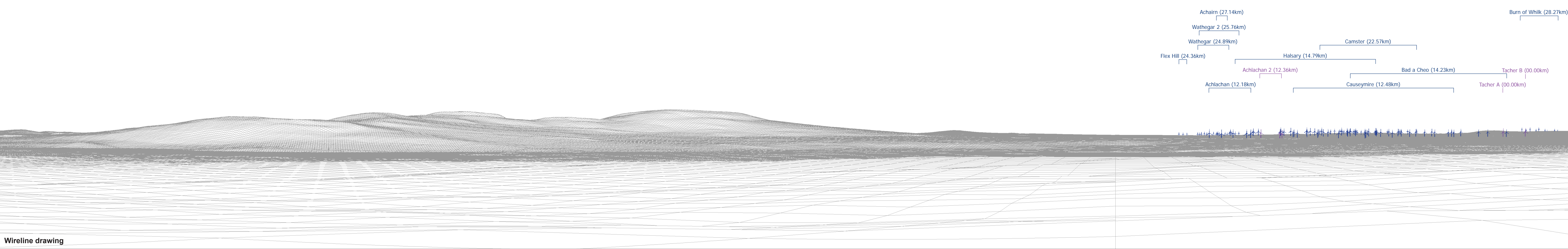
INFINERGY





Baseline photograph

This image provides landscape and visual context only



Wireline drawing

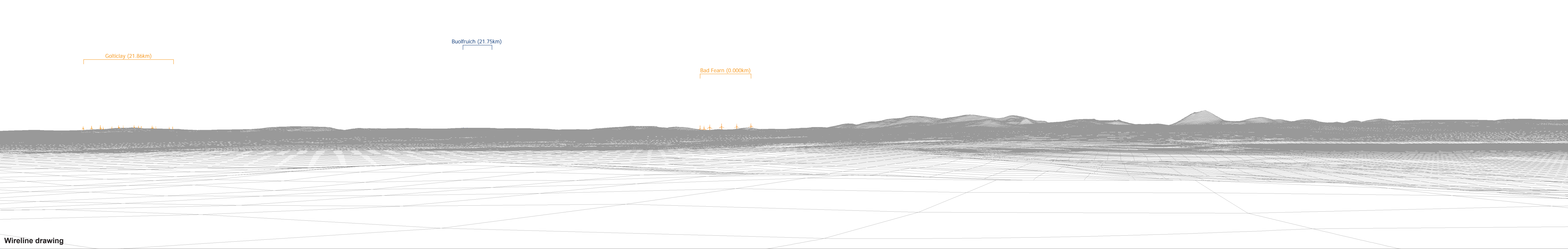
OS reference:	302694 E 953330 N	Horizontal field of view:	90° (cylindrical projection)	Camera:	Canon EOS 6D
Eye level:	161.5 m AOD	Principal distance	522 mm	Lens:	50mm (Canon EF 50mm f/1.4)
Direction of view:	71°			Camera height:	1.5 m AGL
Nearest turbine:	7.329 km			Date and time:	15/03/16, 13:24

Figure: 9.115c
Viewpoint G: Braich Feith Hemigal



Baseline photograph

This image provides landscape and visual context only



Wireline drawing

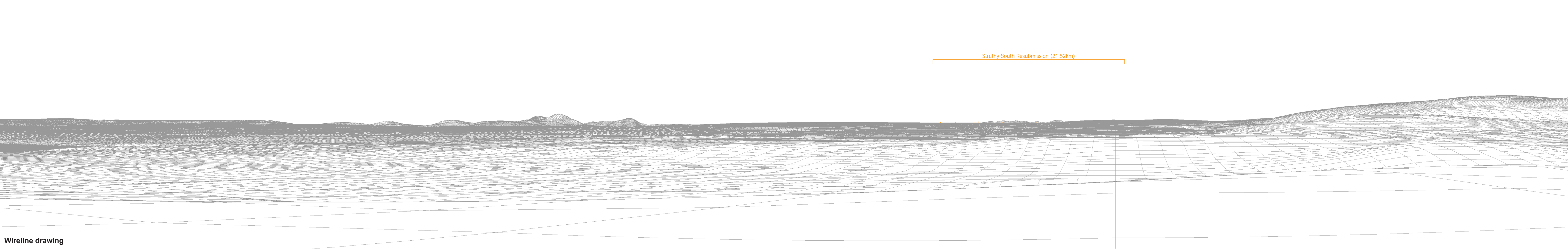
OS reference:	302694 E 953330 N	Horizontal field of view:	90° (cylindrical projection)	Camera:	Canon EOS 6D
Eye level:	161.5 m AOD	Principal distance	522 mm	Lens:	50mm (Canon EF 50mm f/1.4)
Direction of view:	161°			Camera height:	1.5 m AGL
Nearest turbine:	7.329 km			Date and time:	15/03/16, 13:24

Figure: 9.115d
Viewpoint G: Braich Feith Hemigal



Baseline photograph

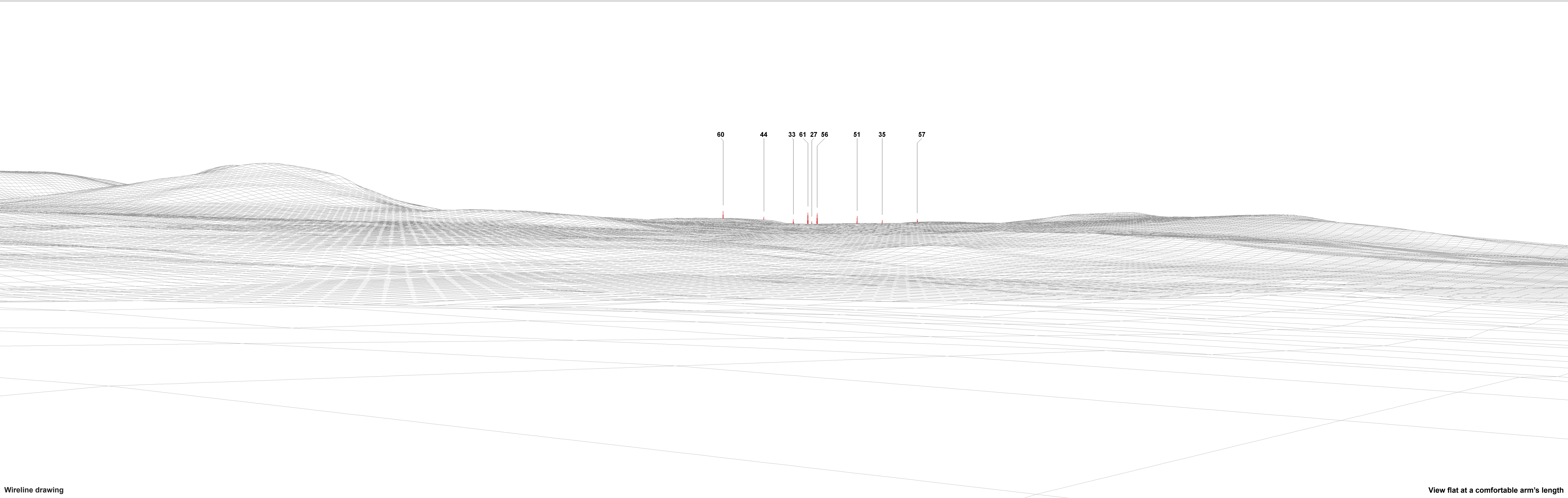
This image provides landscape and visual context only



Wireline drawing

OS reference:	302694 E 953330 N	Horizontal field of view:	90° (cylindrical projection)	Camera:	Canon EOS 6D
Eye level:	161.5 m AOD	Principal distance	522 mm	Lens:	50mm (Canon EF 50mm f/1.4)
Direction of view:	251°			Camera height:	1.5 m AGL
Nearest turbine:	7.329 km			Date and time:	15/03/16, 13:24

Figure: 9.115e
Viewpoint G: Braich Feith Hemigal



Wireline drawing

View flat at a comfortable arm's length



Photomontage

View flat at a comfortable arm's length

OS reference:	302694 E 953330 N	Horizontal field of view:	53.5° (planar projection)	Camera:	Canon EOS 6D	Figure: 9.115g
Eye level:	161.5 m AOD	Principal distance	812.5 mm	Lens:	50mm (Canon EF 50mm f/1.4)	Viewpoint G: Braich Feith Hemigal
Direction of view:	329°	Paper size:	841 x 297 mm (half A1)	Camera height:	1.5 m AGL	
Nearest turbine:	7.329 km	Correct printed image size:	820 x 260 mm	Date and time:	15/03/16, 13:24	