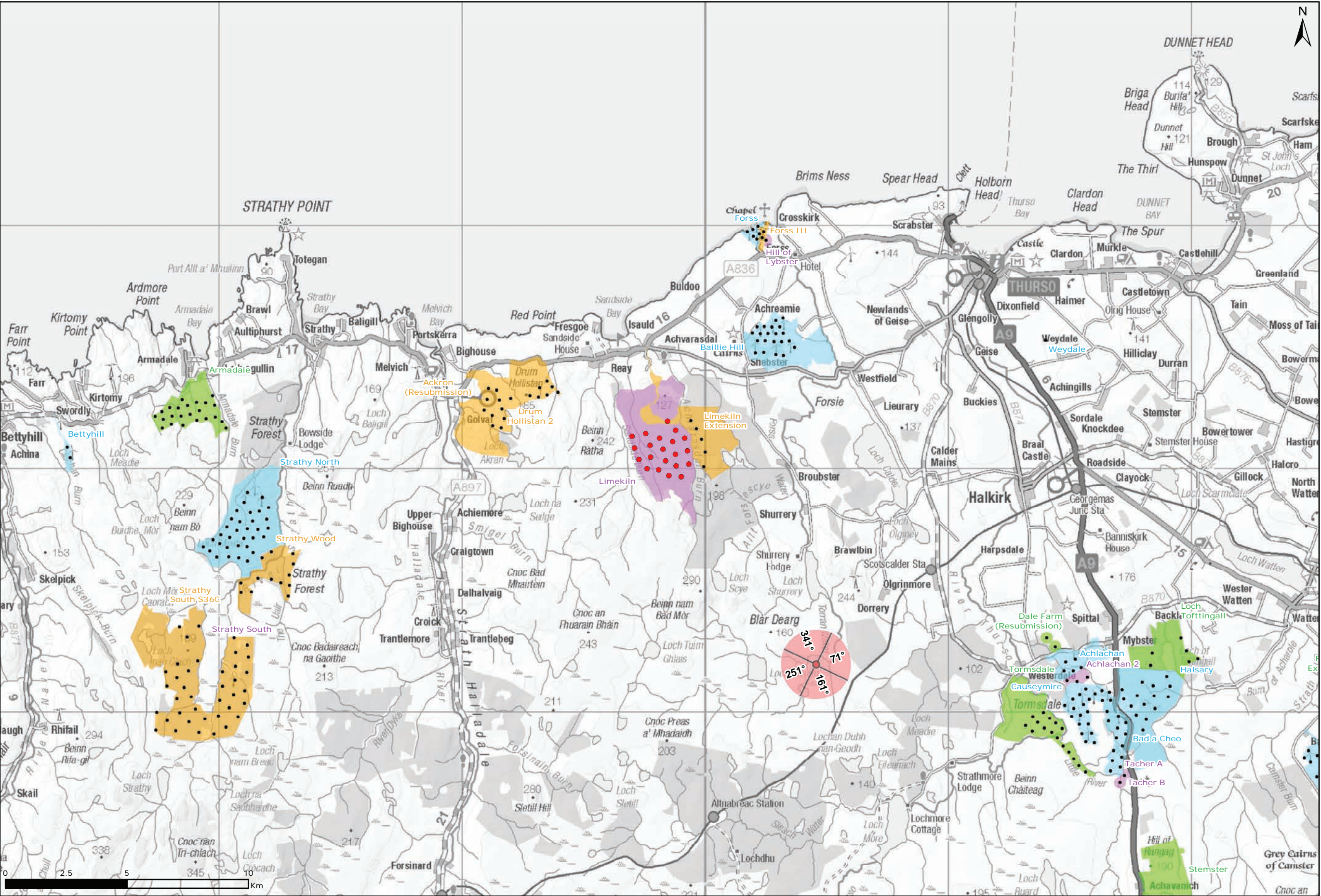
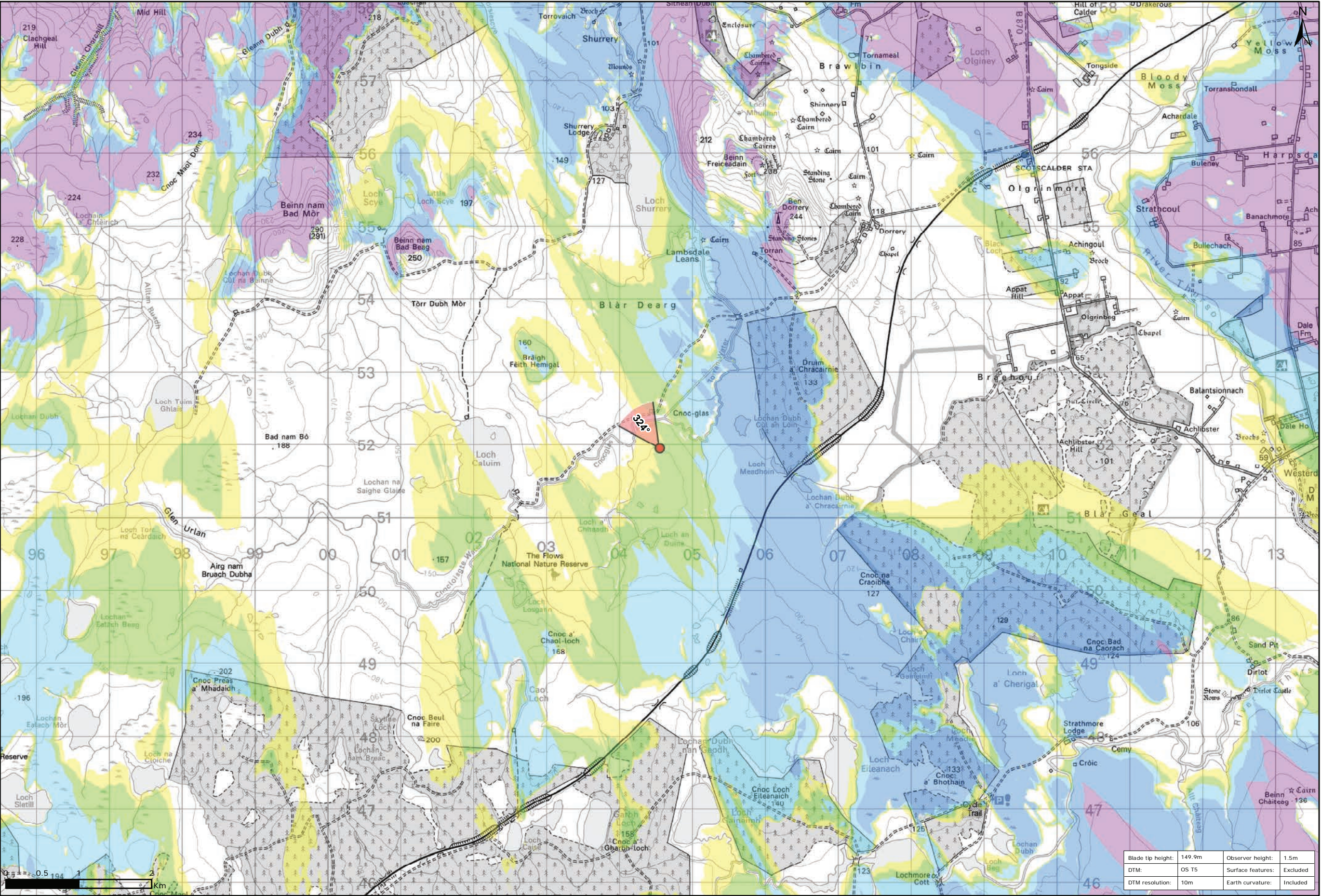


Figure 9.114a: Viewpoint F: Loch Meadhoín



Viewpoint Location Plan Baseline Panorama  
Scale: 1:150,000



Viewpoint Location Plan  
Scale: 1:50,000 (Blade Tip ZTV)

Legend:

- Proposed
- 90 degree field of view viewpoint
- 53.5 degree field of view viewpoint
- Viewpoint with no Photomontage View
- Wind Farm Status (1:150,000 only):
  - Turbine Locations
  - Operational / Under Construction
  - Consented
  - Application
  - Scoping

Blade Tip ZTV

No. of Theoretically Visible Turbines

- 1 - 4
- 5 - 8
- 9 - 12
- 13 - 16
- 17 - 20
- 21 - 24

Title: Viewpoint F: Loch Meadhoín

Limekiln Wind Farm S36C

Source: © Crown copyright and database rights 2021 Ordnance Survey 0100031673

Client: Infinergy

Drawn by: TH

Checked: JP

Date: 15/06/2021

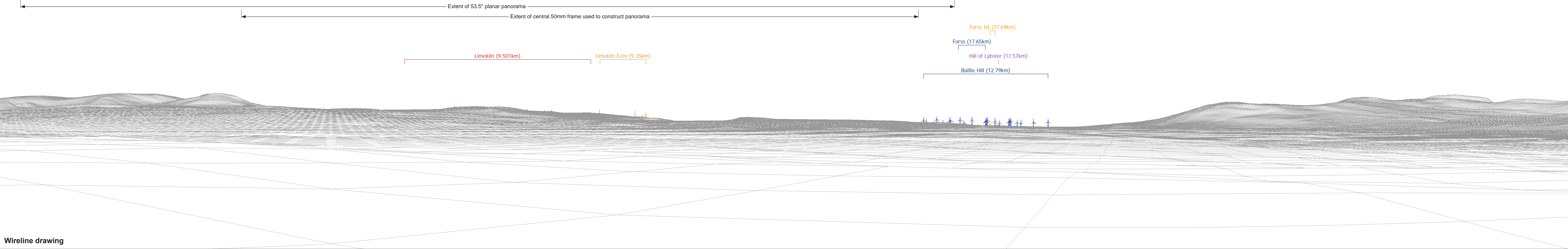
Figure: 9.114a

Scale: Multiple

Revision No: 0

INFINERGY





OS reference:	304552 E 951948 N	Horizontal field of view:	90° (cylindrical projection)	Camera:	Canon EOS 6D
Eye level:	121.5 m AOD	Principal distance	522 mm	Lens:	50mm (Canon EF 50mm f/1.4)
Direction of view:	341°			Camera height:	1.5 m AGL
Nearest turbine:	9.501 km			Date and time:	16/03/16, 14:52

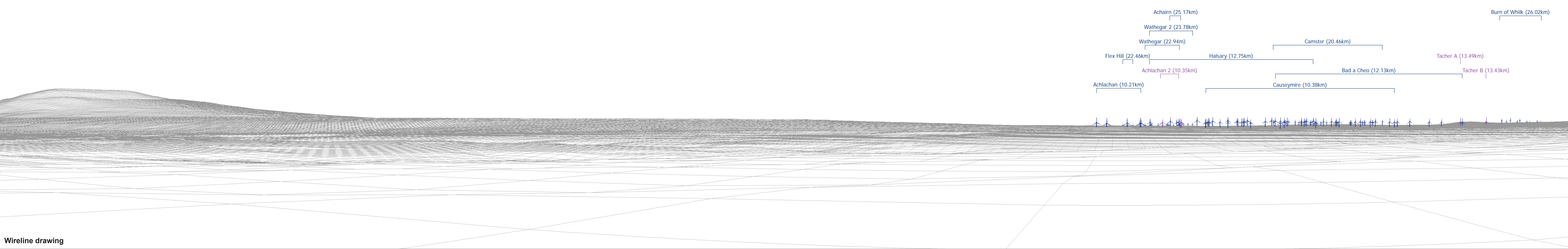
Figure: 9.114b  
Viewpoint F: Loch Meadhoin





Baseline photograph

This image provides landscape and visual context only

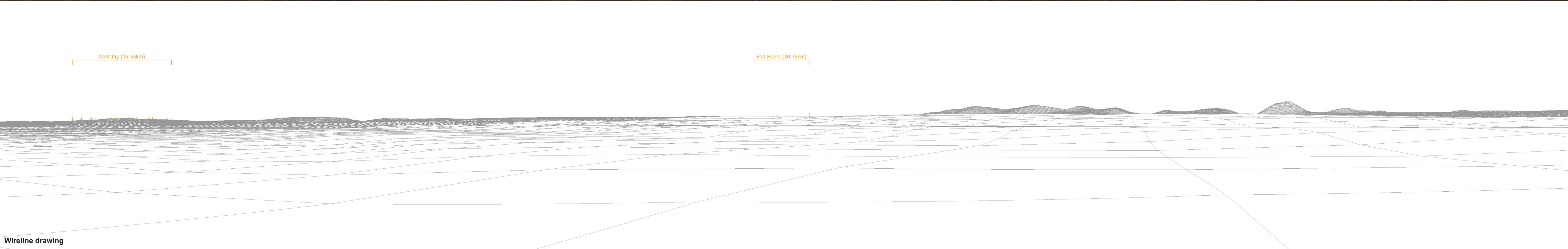


Wireline drawing

OS reference:	304552 E 951948 N	Horizontal field of view:	90° (cylindrical projection)	Camera:	Canon EOS 6D
Eye level:	121.5 m AOD	Principal distance	522 mm	Lens:	50mm (Canon EF 50mm f/1.4)
Direction of view:	71°			Camera height:	1.5 m AGL
Nearest turbine:	9.501 km			Date and time:	16/03/16, 14:52

Figure: 9.114c  
Viewpoint F: Loch Meadhoin



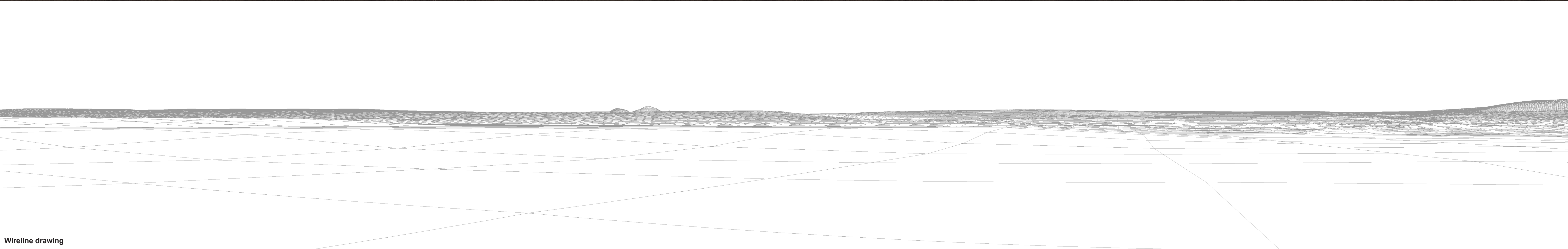






Baseline photograph

This image provides landscape and visual context only

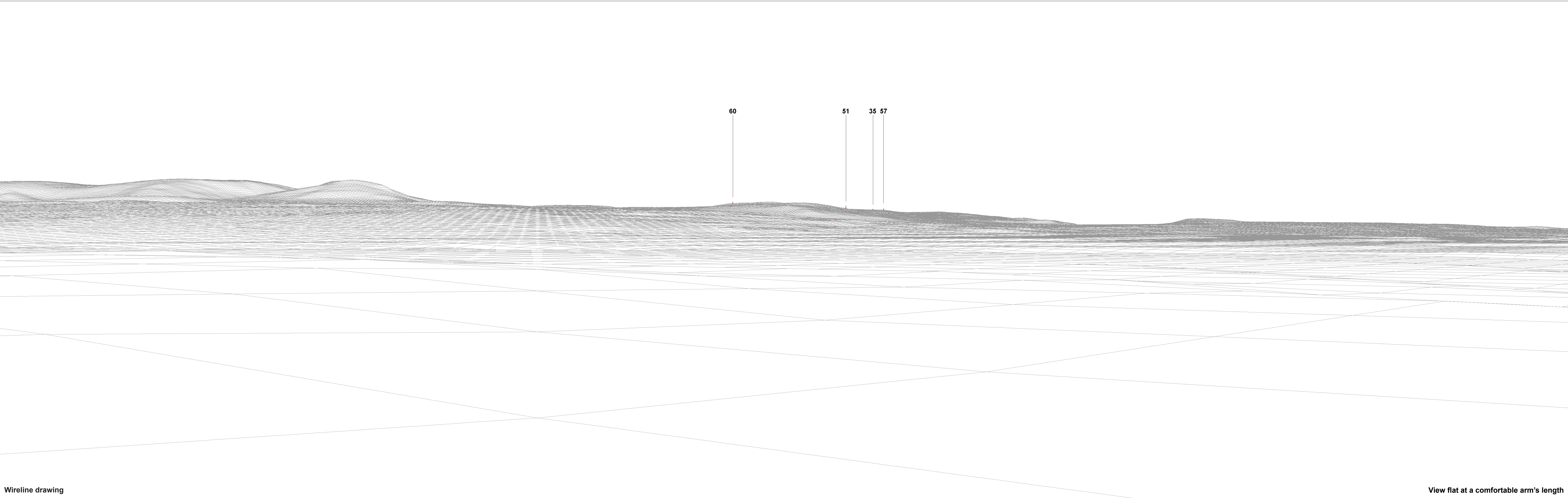


Wireline drawing

OS reference:	304552 E 951948 N	Horizontal field of view:	90° (cylindrical projection)	Camera:	Canon EOS 6D
Eye level:	121.5 m AOD	Principal distance	522 mm	Lens:	50mm (Canon EF 50mm f/1.4)
Direction of view:	251°			Camera height:	1.5 m AGL
Nearest turbine:	9.501 km			Date and time:	16/03/16, 14:52

Figure: 9.114e  
Viewpoint F: Loch Meadhoin





Wireline drawing

View flat at a comfortable arm's length

OS reference:	304552 E 951948 N	Horizontal field of view:	53.5° (planar projection)	Camera:	Canon EOS 6D
Eye level:	121.5 m AOD	Principal distance	812.5 mm	Lens:	50mm (Canon EF 50mm f/1.4)
Direction of view:	324°	Paper size:	841 x 297 mm (half A1)	Camera height:	1.5 m AGL
Nearest turbine:	9.501 km	Correct printed image size:	820 x 260 mm	Date and time:	16/03/16, 14:52

Figure: 9.114f  
Viewpoint F: Loch Meadhoin





Photomontage

View flat at a comfortable arm's length

OS reference:	304552 E 951948 N	Horizontal field of view:	53.5° (planar projection)	Camera:	Canon EOS 6D
Eye level:	121.5 m AOD	Principal distance	812.5 mm	Lens:	50mm (Canon EF 50mm f/1.4)
Direction of view:	324°	Paper size:	841 x 297 mm (half A1)	Camera height:	1.5 m AGL
Nearest turbine:	9.501 km	Correct printed image size:	820 x 260 mm	Date and time:	16/03/16, 14:52

Figure: 9.114g  
Viewpoint F: Loch Meadhoin