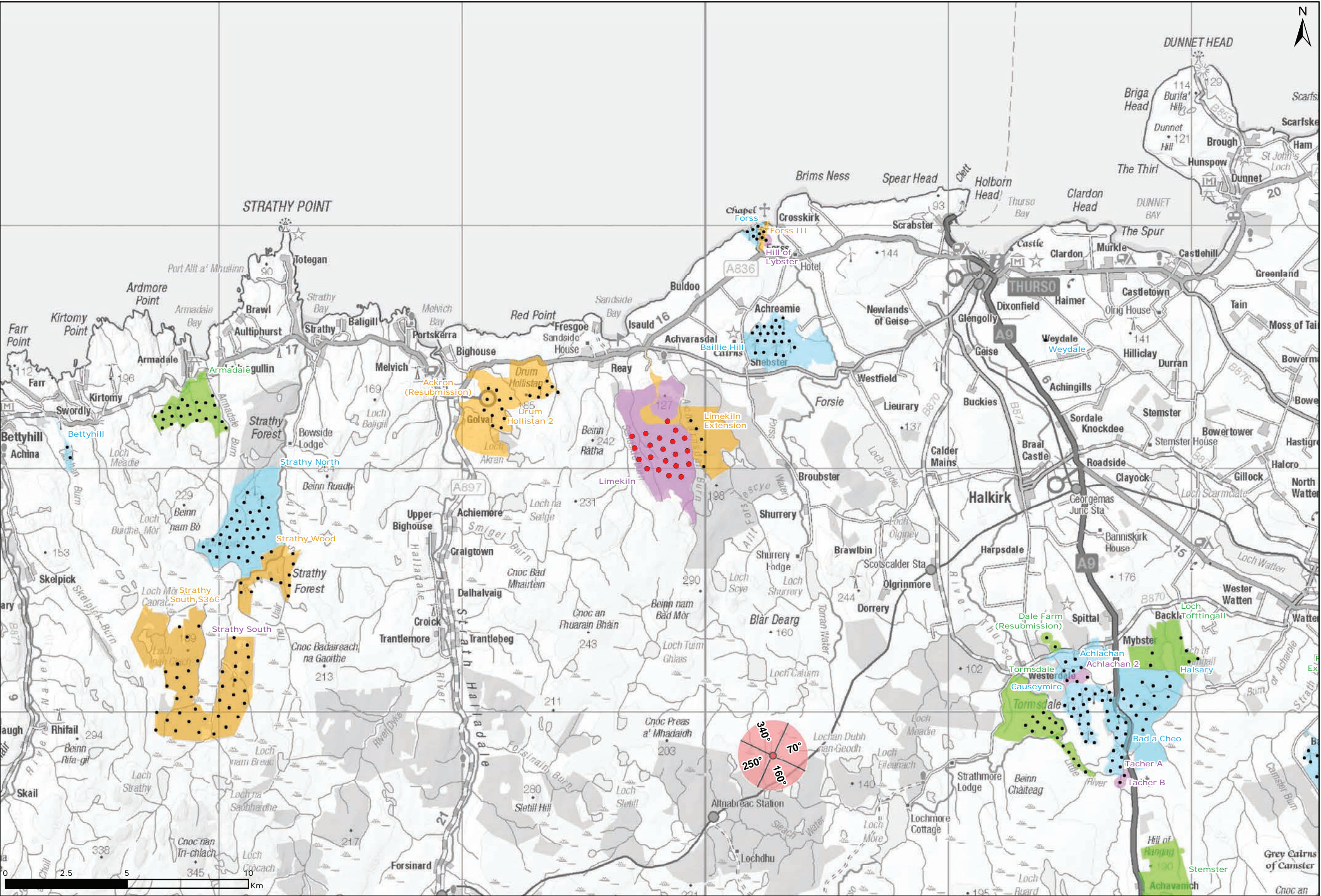
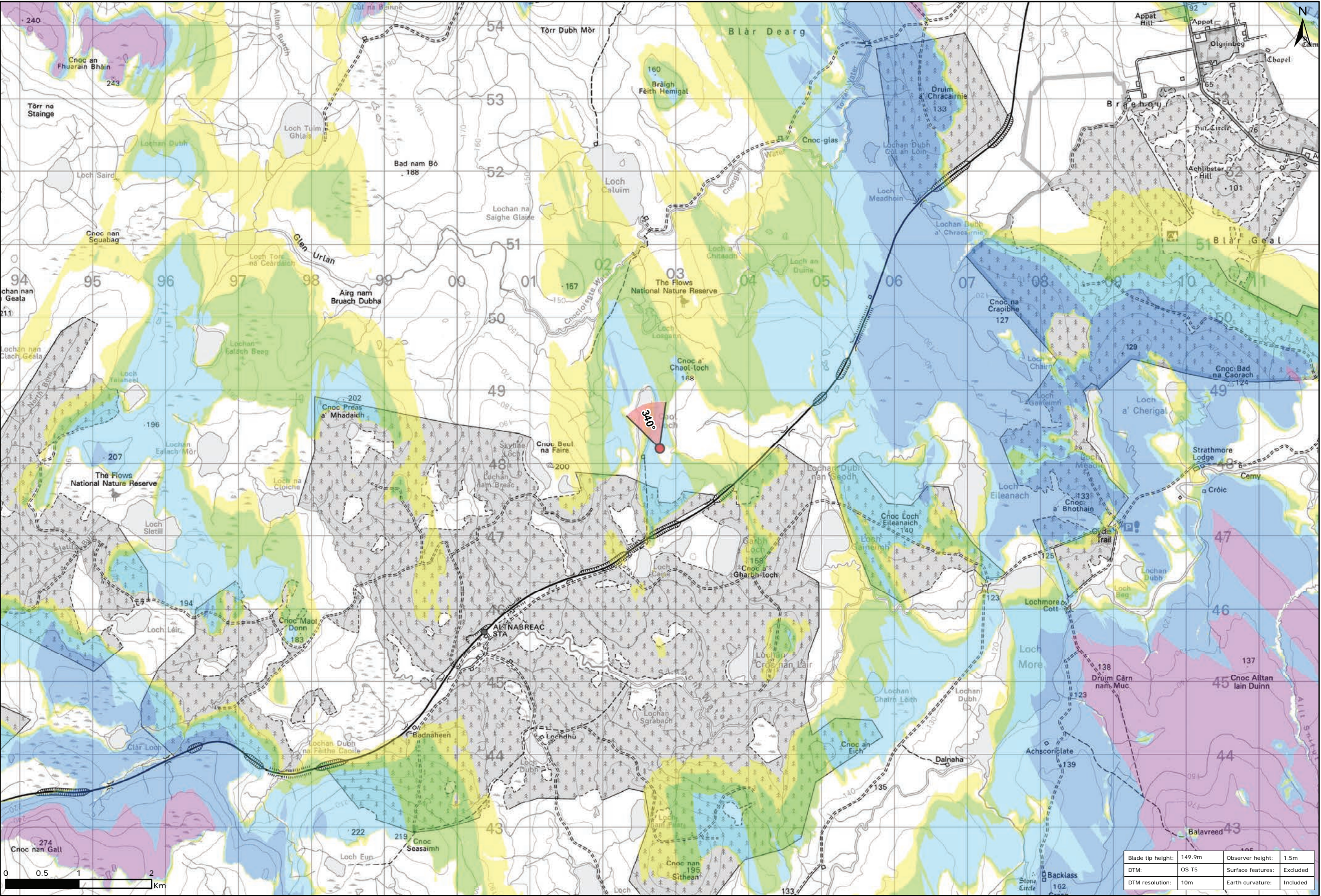


Figure 9.113a: Viewpoint E: Caol Loch



Viewpoint Location Plan Baseline Panorama
Scale: 1:150,000



Viewpoint Location Plan
Scale: 1:50,000 (Blade Tip ZTV)

Legend:

- Proposed
- 90 degree field of view viewpoint
- 53.5 degree field of view viewpoint
- Viewpoint with no Photomontage View
- Wind Farm Status (1:150,000 only):
 - Turbine Locations
 - Operational / Under Construction
 - Consented
 - Application
 - Scoping
- Blade Tip ZTV
- No. of Theoretically Visible Turbines
 - 1 - 4
 - 5 - 8
 - 9 - 12
 - 13 - 16
 - 17 - 20
 - 21 - 24

Title: Viewpoint E: Caol Loch

Limekiln Wind Farm S36C

Source: 6 Crown copyright and database rights 2021 Ordnance Survey 0100031673

Client: Infinergy

Drawn by: TH **Checked:** JP

Date: 15/06/2021 **Figure:** 9.113a

Scale: Multiple **Revision No:** 0

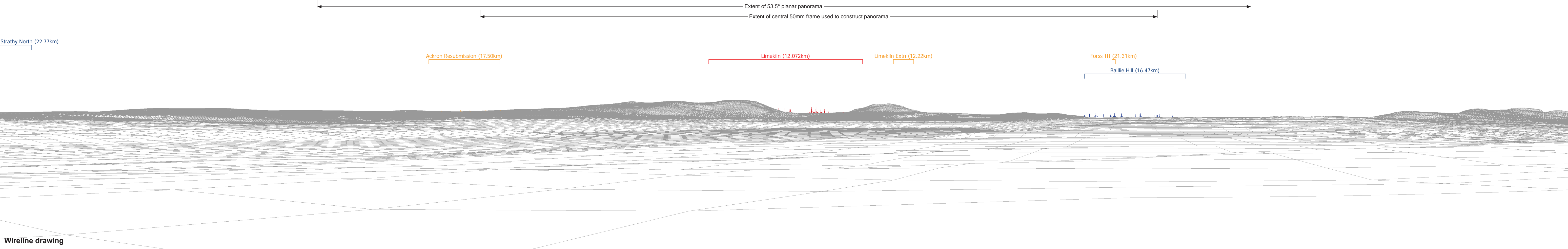
Blade tip height:	149.9m	Observer height:	1.5m
DTM:	OS T5	Surface features:	Excluded
DTM resolution:	10m	Earth curvature:	Included

INFINERGY



Baseline photograph

This image provides landscape and visual context only



Wireline drawing

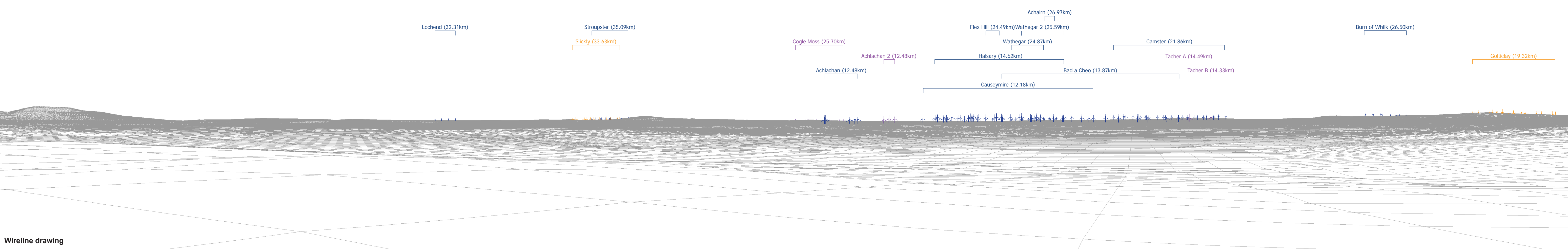
OS reference:	302780 E 948199 N	Horizontal field of view:	90° (cylindrical projection)	Camera:	Canon EOS 6D
Eye level:	169.73 m AOD	Principal distance	522 mm	Lens:	50mm (Canon EF 50mm f/1.4)
Direction of view:	340°			Camera height:	1.5 m AGL
Nearest turbine:	12.072 km			Date and time:	15/03/16, 16:11

Figure: 9.113b
Viewpoint E: Caol Loch



Baseline photograph

This image provides landscape and visual context only



Wireline drawing

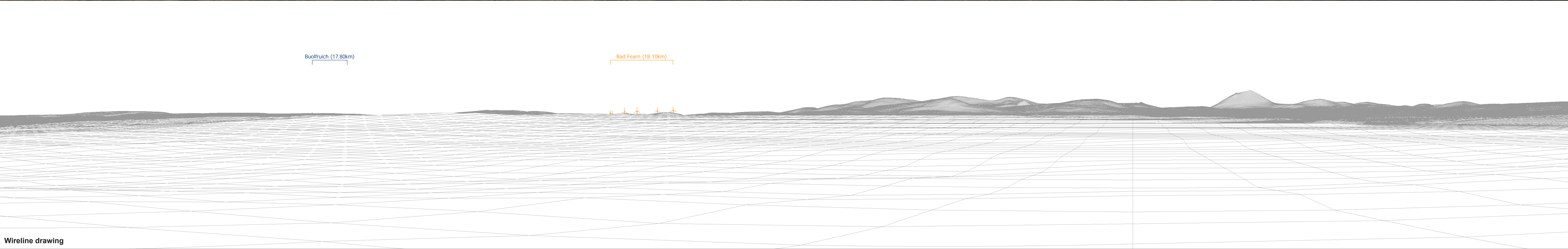
OS reference:	302780 E 948199 N	Horizontal field of view:	90° (cylindrical projection)	Camera:	Canon EOS 6D
Eye level:	169.73 m AOD	Principal distance:	522 mm	Lens:	50mm (Canon EF 50mm f/1.4)
Direction of view:	70°			Camera height:	1.5 m AGL
Nearest turbine:	12.072 km			Date and time:	15/03/16, 16:11

Figure: 9.113c
Viewpoint E: Caol Loch



Baseline photograph

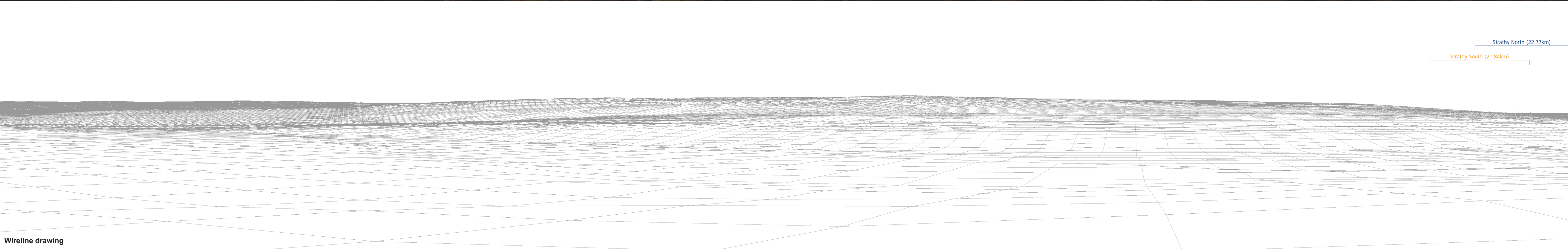
This image provides landscape and visual context only

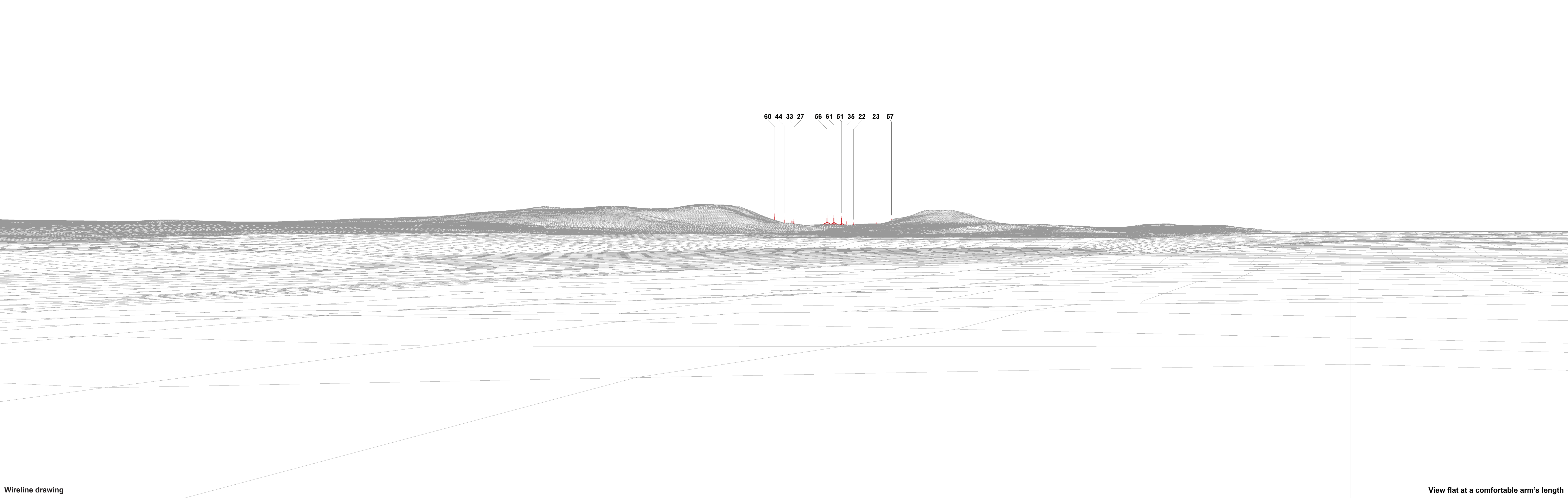


Wireline drawing

OS reference:	302780 E 948199 N	Horizontal field of view:	90° (cylindrical projection)	Camera:	Canon EOS 6D
Eye level:	169.73 m AOD	Principal distance	522 mm	Lens:	50mm (Canon EF 50mm f/1.4)
Direction of view:	160°			Camera height:	1.5 m AGL
Nearest turbine:	12.072 km			Date and time:	15/03/16, 16:11

Figure: 9.113d
Viewpoint E: Caol Loch





Wireline drawing

View flat at a comfortable arm's length

OS reference: 302780 E 948199 N		Horizontal field of view: 53.5° (planar projection)		Camera: Canon EOS 6D		Figure: 9.113f	
Eye level: 169.73 m AOD		Principal distance: 812.5 mm		Lens: 50mm (Canon EF 50mm f/1.4)		Viewpoint E: Caol Loch	
Direction of view: 340°		Paper size: 841 x 297 mm (half A1)		Camera height: 1.5 m AGL			
Nearest turbine: 12.072 km		Correct printed image size: 820 x 260 mm		Date and time: 15/03/16, 16:11			



Photomontage

View flat at a comfortable arm's length

OS reference:	302780 E 948199 N	Horizontal field of view:	53.5° (planar projection)	Camera:	Canon EOS 6D	Figure: 9.113g Viewpoint E: Caol Loch
Eye level:	169.73 m AOD	Principal distance	812.5 mm	Lens:	50mm (Canon EF 50mm f/1.4)	
Direction of view:	340°	Paper size:	841 x 297 mm (half A1)	Camera height:	1.5 m AGL	
Nearest turbine:	12.072 km	Correct printed image size:	820 x 260 mm	Date and time:	15/03/16, 16:11	