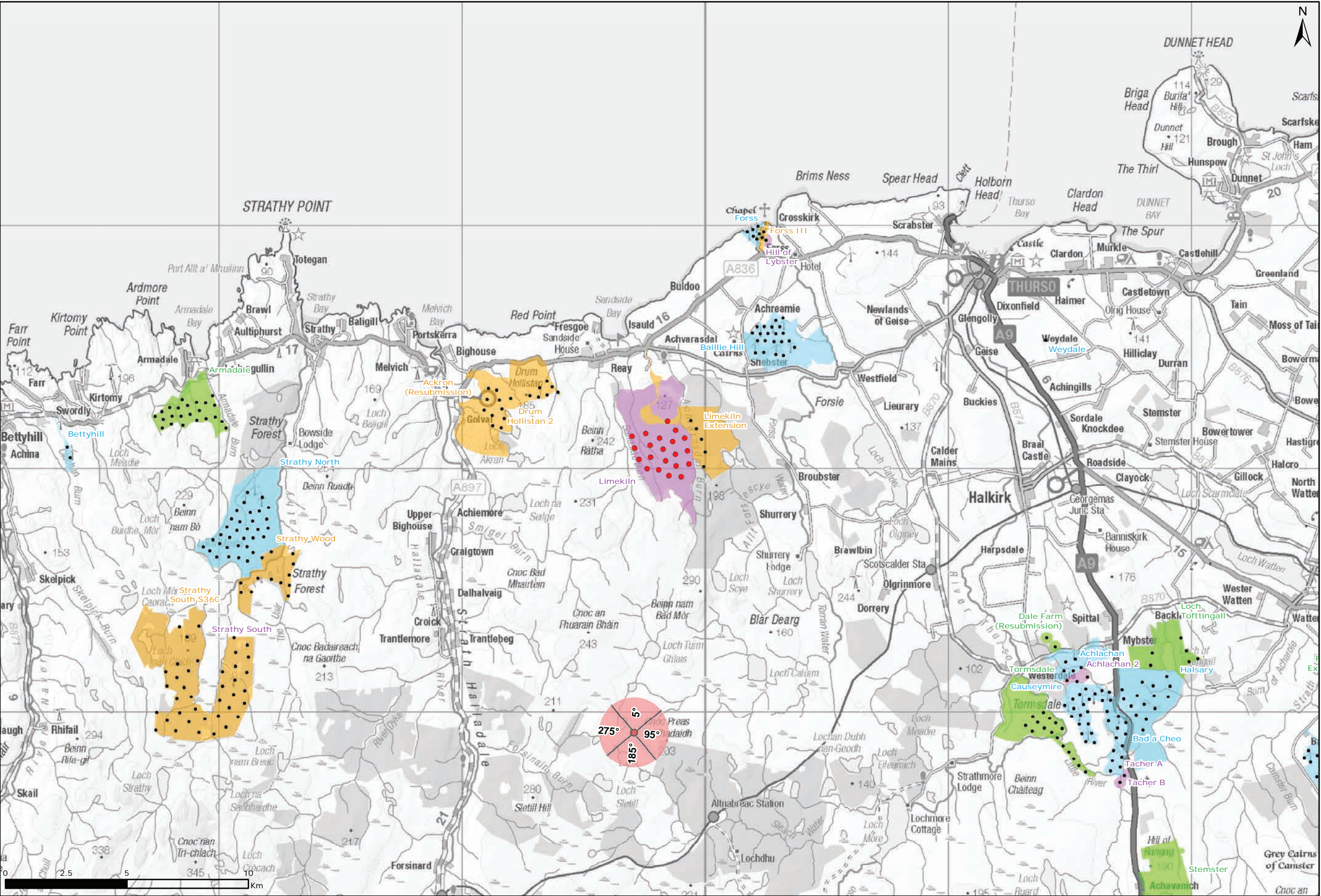
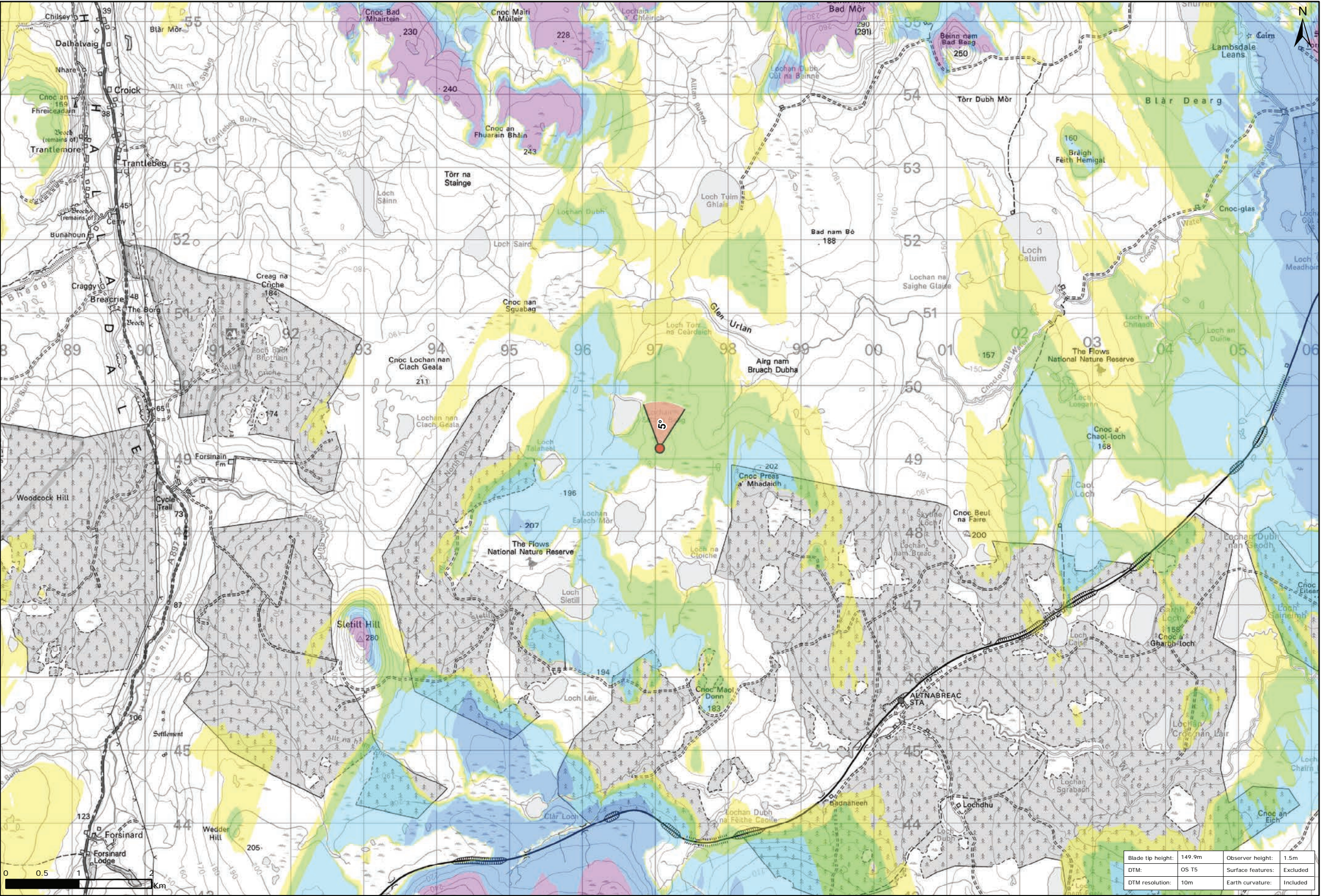


Figure 9.112a: Viewpoint D: Lochan Ealach Beag



Viewpoint Location Plan Baseline Panorama
Scale: 1:150,000



Viewpoint Location Plan
Scale: 1:50,000 (Blade Tip ZTV)

Legend:

- Proposed
- 90 degree field of view viewpoint
- 53.5 degree field of view viewpoint
- Viewpoint with no Photomontage View

Wind Farm Status (1:150,000 only):

- Turbine Locations
- Operational / Under Construction
- Consented
- Application
- Scoping

Blade Tip ZTV

No. of Theoretically Visible Turbines

1 - 4
5 - 8
9 - 12
13 - 16
17 - 20
21 - 24

Title:
Viewpoint D: Lochan Ealach Beag

Limekiln Wind Farm S36C

Source:
© Crown copyright and database rights
2021 Ordnance Survey 0100031673

Client:
Infinergy

Drawn by: TH	Checked: JP
Date: 15/06/2021	Figure: 9.112a
Scale: Multiple	Revision No: 0

Blade tip height: 149.9m
DTM: OS T5
DTM resolution: 10m

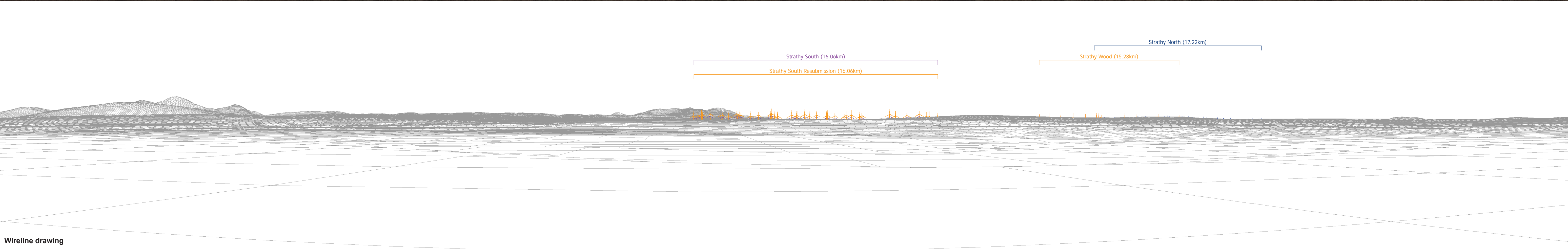
Observer height: 1.5m
Surface features: Excluded
Earth curvature: Included

INFINERGY



Baseline photograph

This image provides landscape and visual context only



Wireline drawing

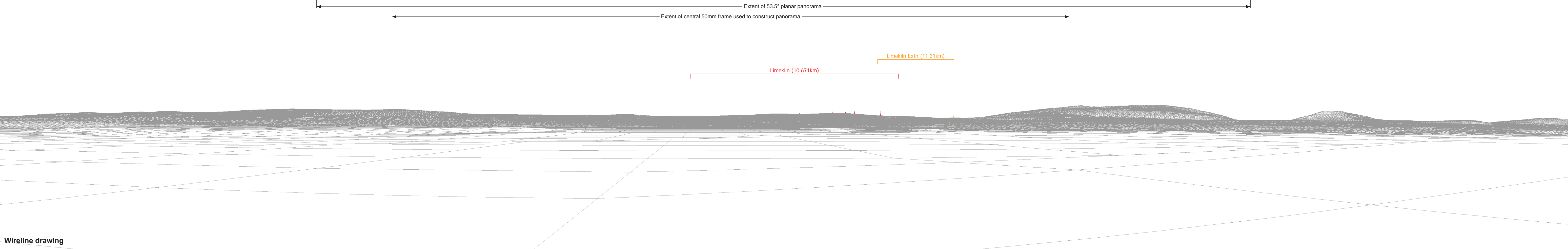
OS reference:	297062 E 949140 N	Horizontal field of view:	90° (cylindrical projection)	Camera:	Canon EOS 6D
Eye level:	197.5 m AOD	Principal distance	522 mm	Lens:	50mm (Canon EF 50mm f/1.4)
Direction of view:	275°			Camera height:	1.5 m AGL
Nearest turbine:	10.671 km			Date and time:	15/03/16, 11:54

Figure: 9.112b
Viewpoint D: Lochan Ealach Beag



Baseline photograph

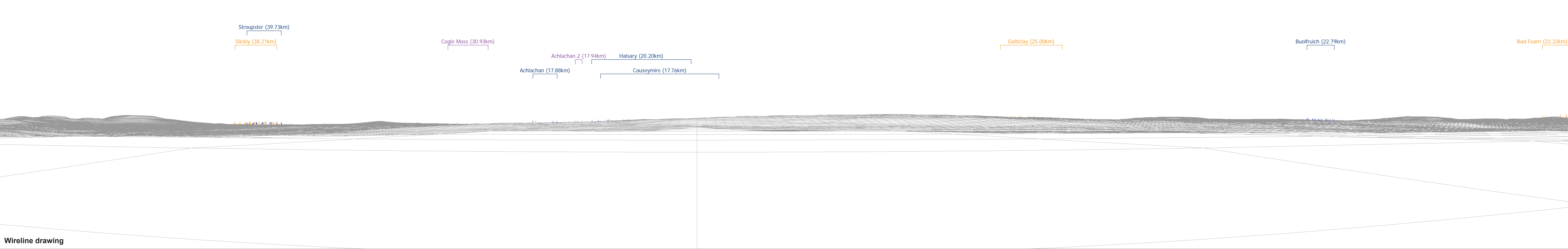
This image provides landscape and visual context only



Wireline drawing

OS reference:	297062 E 949140 N	Horizontal field of view:	90° (cylindrical projection)	Camera:	Canon EOS 6D
Eye level:	197.5 m AOD	Principal distance	522 mm	Lens:	50mm (Canon EF 50mm f/1.4)
Direction of view:	5°			Camera height:	1.5 m AGL
Nearest turbine:	10.671 km			Date and time:	15/03/16, 11:54

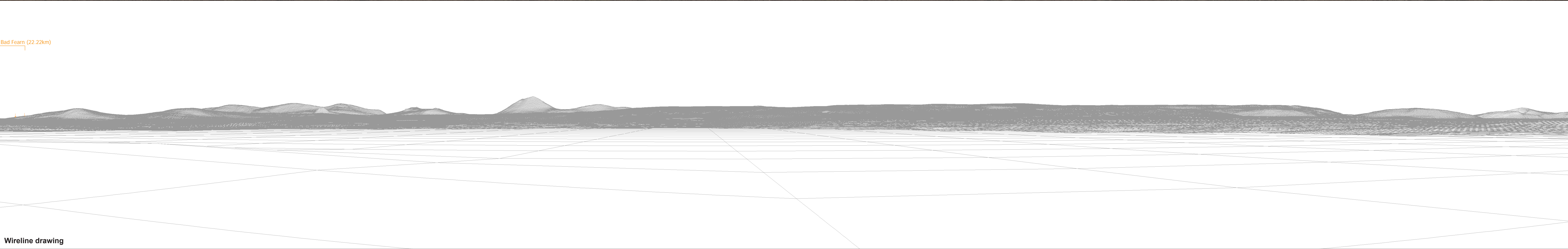
Figure: 9.112c
Viewpoint D: Lochan Ealach Beag





Baseline photograph

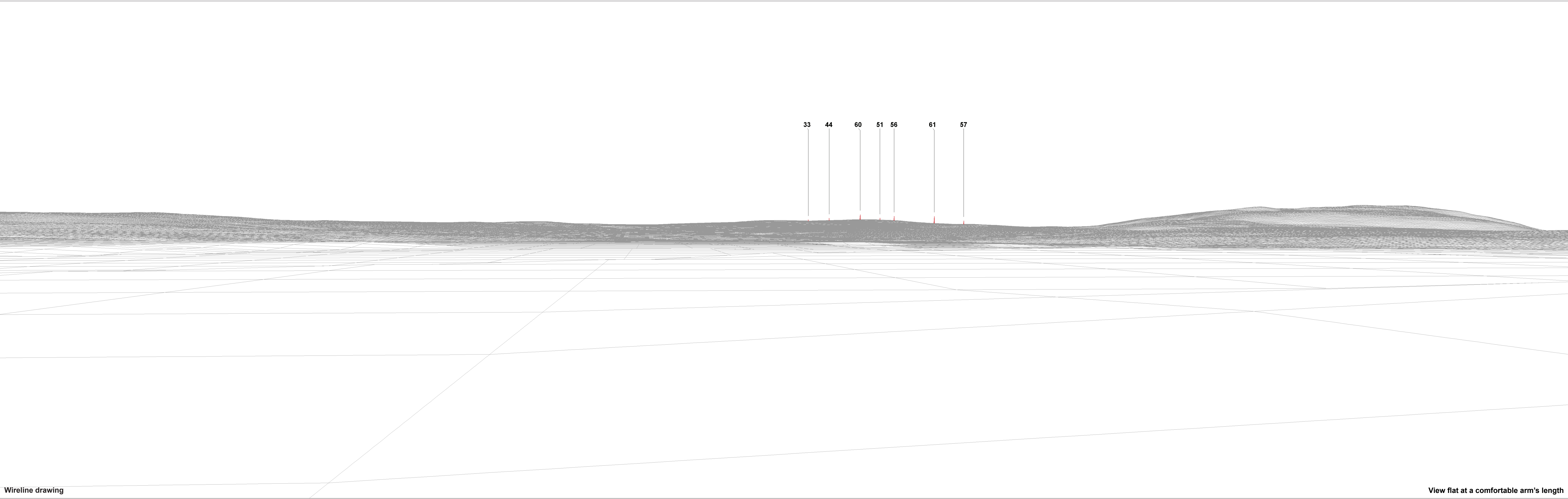
This image provides landscape and visual context only



Wireline drawing

OS reference:	297062 E 949140 N	Horizontal field of view:	90° (cylindrical projection)	Camera:	Canon EOS 6D
Eye level:	197.5 m AOD	Principal distance	522 mm	Lens:	50mm (Canon EF 50mm f/1.4)
Direction of view:	185°			Camera height:	1.5 m AGL
Nearest turbine:	10.671 km			Date and time:	15/03/16, 11:54

Figure: 9.112e
Viewpoint D: Lochan Ealach Beag



Wireline drawing

View flat at a comfortable arm's length

OS reference: 297062 E 949140 N		Horizontal field of view: 53.5° (planar projection)		Camera: Canon EOS 6D	
Eye level: 197.5 m AOD		Principal distance: 812.5 mm		Lens: 50mm (Canon EF 50mm f/1.4)	
Direction of view: 5°		Paper size: 841 x 297 mm (half A1)		Camera height: 1.5 m AGL	
Nearest turbine: 10.671 km		Correct printed image size: 820 x 260 mm		Date and time: 15/03/16, 11:54	

Figure: 9.112f
Viewpoint D: Lochan Ealach Beag



Photomontage

View flat at a comfortable arm's length

OS reference:	297062 E 949140 N	Horizontal field of view:	53.5° (planar projection)	Camera:	Canon EOS 6D	Figure: 9.112g Viewpoint D: Lochan Ealach Beag
Eye level:	197.5 m AOD	Principal distance	812.5 mm	Lens:	50mm (Canon EF 50mm f/1.4)	
Direction of view:	5°	Paper size:	841 x 297 mm (half A1)	Camera height:	1.5 m AGL	
Nearest turbine:	10.671 km	Correct printed image size:	820 x 260 mm	Date and time:	15/03/16, 11:54	