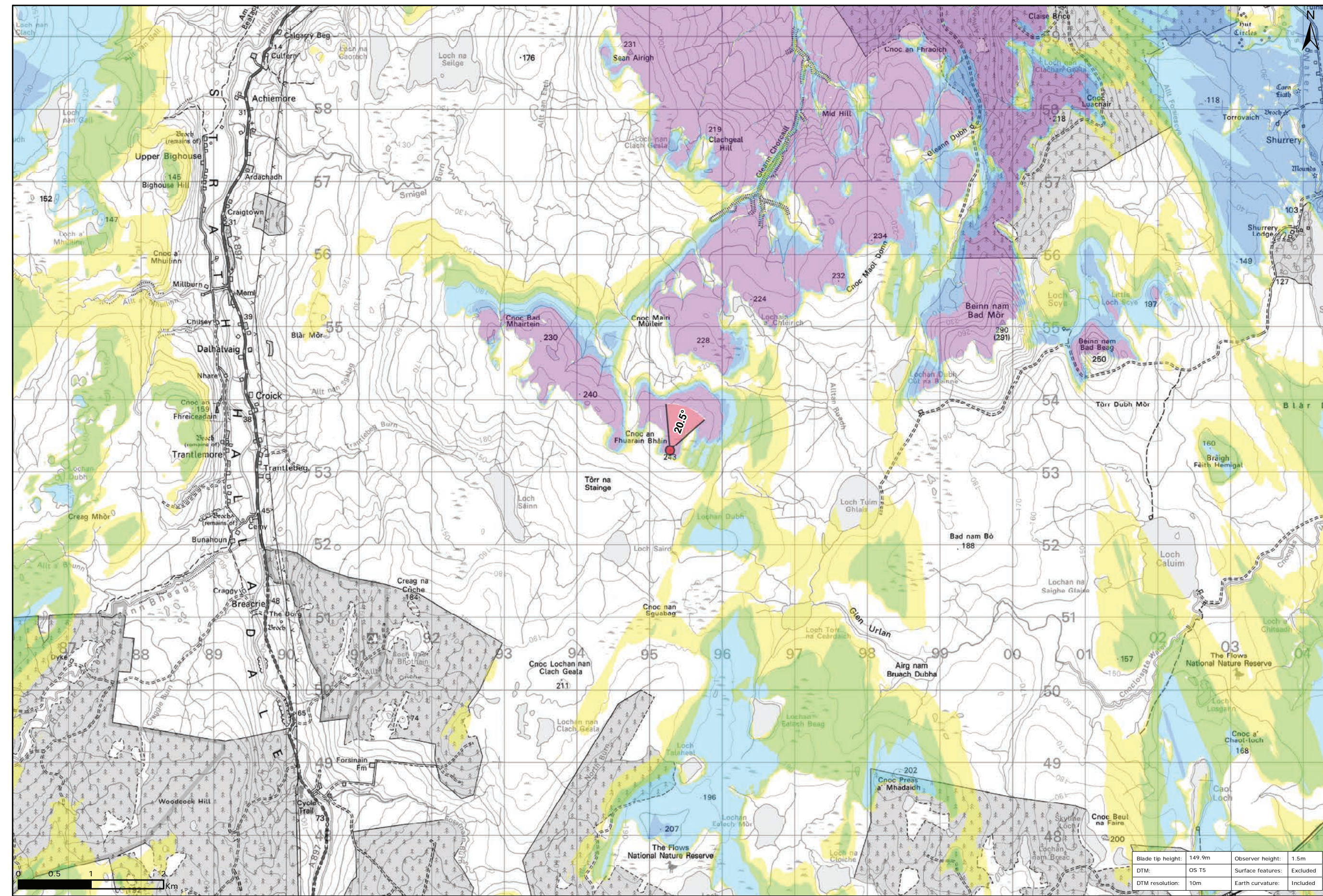


Viewpoint Location Plan Baseline Panorama  
Scale: 1:150,000



Viewpoint Location Plan  
Scale: 1:50,000 (Blade Tip ZTV)

**Legend:**

- Proposed
- 90 degree field of view viewpoint
- 53.5 degree field of view viewpoint
- Viewpoint with no Photomonatge View

**Wind Farm Status (1:150,000 only):**

- Turbine Locations
- Operational / Under Construction
- Consented
- Application
- Scoping

**Blade Tip ZTV**

No. of Theoretically Visible Turbines

- 1 - 4
- 5 - 8
- 9 - 12
- 13 - 16
- 17 - 20
- 21 - 24

**Title:** Viewpoint C: Cnoc an Fhuarain

**Project:** Limekiln Wind Farm S36C

**Source:** © Crown copyright and database rights 2021 Ordnance Survey 0100031673

**Client:** Infinergy

<b>Drawn by:</b> TH	<b>Checked:</b> JP
<b>Date:</b> 15/06/2021	<b>Figure:</b> 9.111a
<b>Scale:</b> Multiple	<b>Revision No:</b> 0

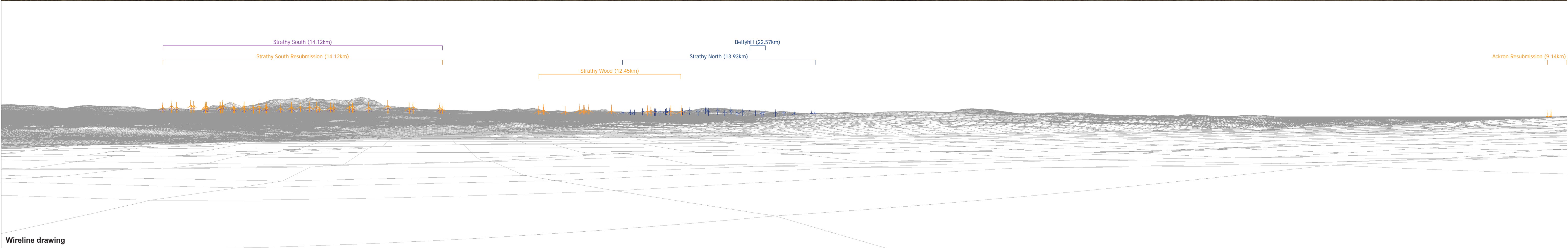
**Table:**

Blade tip height:	149.9m	Observer height:	1.5m
DTM:	OS T5	Surface features:	Excluded
DTM resolution:	10m	Earth curvature:	Included



Baseline photograph

This image provides landscape and visual context only



Wireline drawing

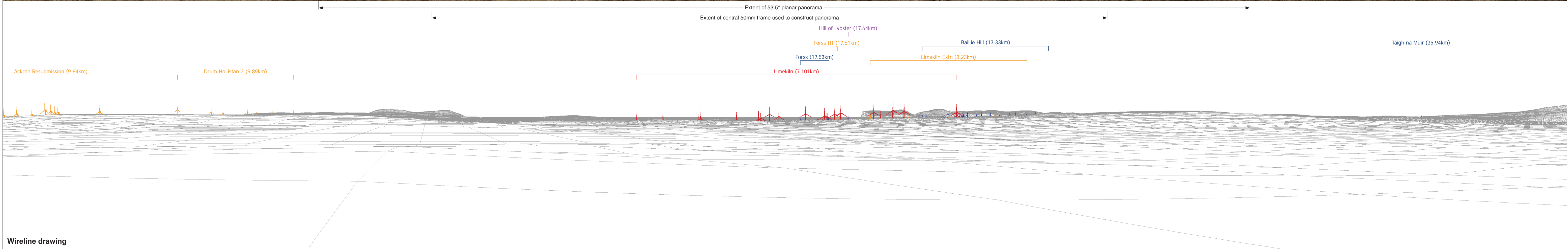
<b>OS reference:</b> 295281 E 953296 N	<b>Horizontal field of view:</b> 90° (cylindrical projection)	<b>Camera:</b> Canon EOS 6D
<b>Eye level:</b> 244.53 m AOD	<b>Principal distance:</b> 522 mm	<b>Lens:</b> 50mm (Canon EF 50mm f/1.4)
<b>Direction of view:</b> 290.5°		<b>Camera height:</b> 1.5 m AGL
<b>Nearest turbine:</b> 7.101 km		<b>Date and time:</b> 15/03/16, 10:11

**Figure: 9.111b**  
**Viewpoint C: Cnoc an Fhurain Bhain**



Baseline photograph

This image provides landscape and visual context only



Wireline drawing

OS reference: 295281 E 953296 N  
 Eye level: 244.53 m AOD  
 Direction of view: 20.5°  
 Nearest turbine: 7.101 km

Horizontal field of view: 90° (cylindrical projection)  
 Principal distance: 522 mm

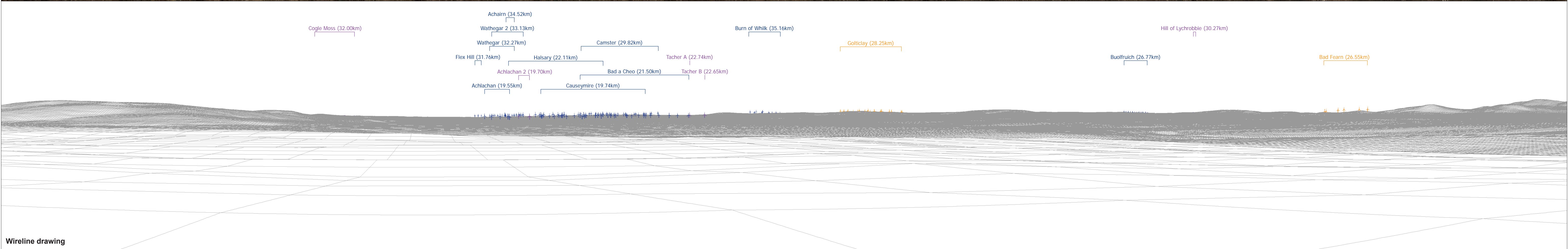
Camera: Canon EOS 6D  
 Lens: 50mm (Canon EF 50mm f/1.4)  
 Camera height: 1.5 m AGL  
 Date and time: 15/03/16, 10:11

Figure: 9.111c  
 Viewpoint C: Cnoc an Fhurain Bhain



Baseline photograph

This image provides landscape and visual context only



Wireline drawing

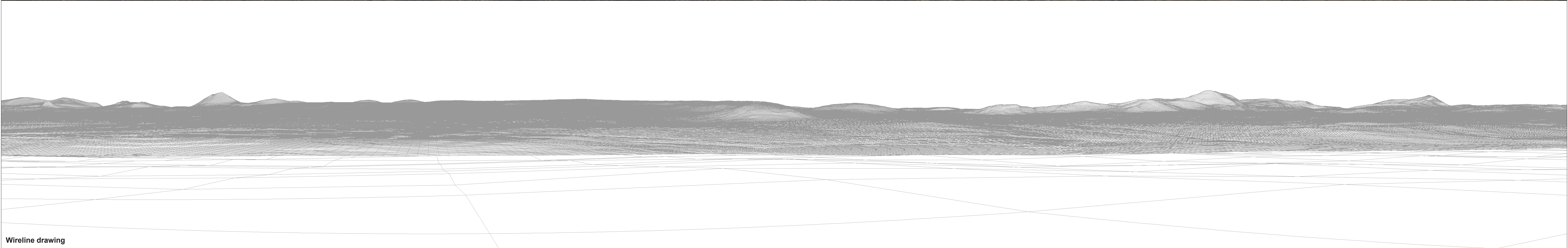
<b>OS reference:</b> 295281 E 953296 N	<b>Horizontal field of view:</b> 90° (cylindrical projection)	<b>Camera:</b> Canon EOS 6D
<b>Eye level:</b> 244.53 m AOD	<b>Principal distance:</b> 522 mm	<b>Lens:</b> 50mm (Canon EF 50mm f/1.4)
<b>Direction of view:</b> 110.5°		<b>Camera height:</b> 1.5 m AGL
<b>Nearest turbine:</b> 7.101 km		<b>Date and time:</b> 15/03/16, 10:11

**Figure: 9.111d**  
**Viewpoint C: Cnoc an Fhurain Bhain**



Baseline photograph

This image provides landscape and visual context only



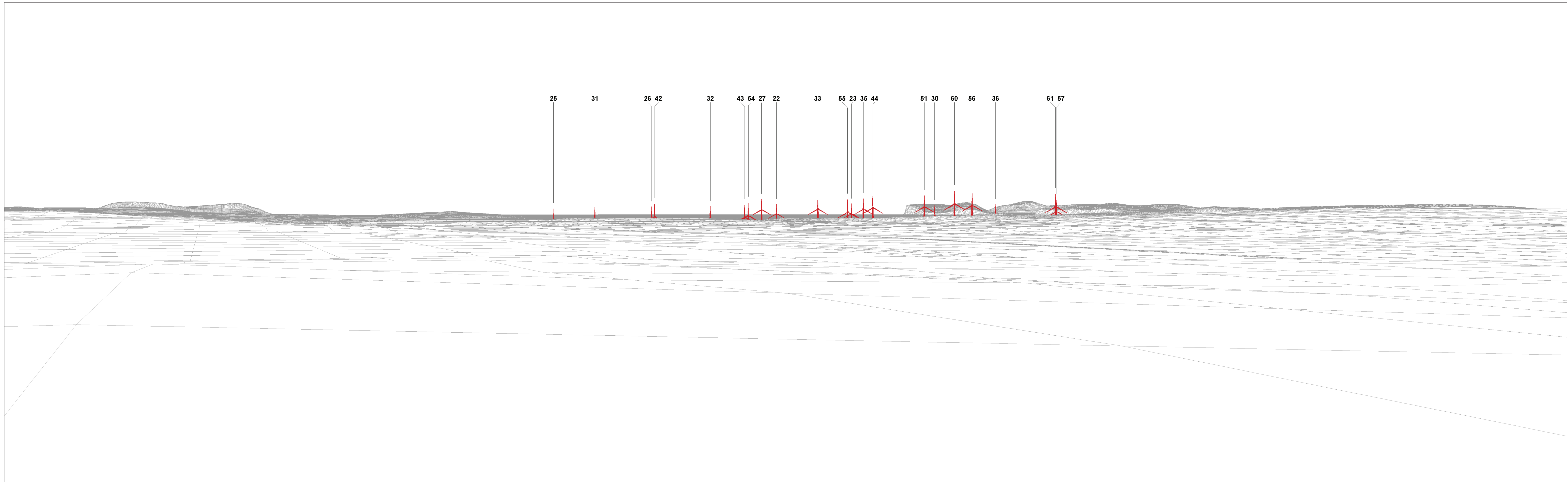
Wireline drawing

**OS reference:** 295281 E 953296 N  
**Eye level:** 244.53 m AOD  
**Direction of view:** 200.5°  
**Nearest turbine:** 7.101 km

**Horizontal field of view:** 90° (cylindrical projection)  
**Principal distance:** 522 mm

**Camera:** Canon EOS 6D  
**Lens:** 50mm (Canon EF 50mm f/1.4)  
**Camera height:** 1.5 m AGL  
**Date and time:** 15/03/16, 10:11

**Figure: 9.111e**  
**Viewpoint C: Cnoc an Fhurain Bhain**



Wireline drawing

View flat at a comfortable arm's length

OS reference: 295281 E 953296 N  
 Eye level: 244.53 m AOD  
 Direction of view: 20.5°  
 Nearest turbine: 7.101 km

Horizontal field of view: 53.5° (planar projection)  
 Principal distance: 812.5 mm  
 Paper size: 841 x 297 mm (half A1)  
 Correct printed image size: 820 x 260 mm

Camera: Canon EOS 6D  
 Lens: 50mm (Canon EF 50mm f/1.4)  
 Camera height: 1.5 m AGL  
 Date and time: 15/03/16, 10:11

Figure: 9.111f  
 Viewpoint C: Cnoc an Fhurain Bhain



Photomontage

View flat at a comfortable arm's length

<b>OS reference:</b> 295281 E 953296 N	<b>Horizontal field of view:</b> 53.5° (planar projection)	<b>Camera:</b> Canon EOS 6D
<b>Eye level:</b> 244.53 m AOD	<b>Principal distance:</b> 812.5 mm	<b>Lens:</b> 50mm (Canon EF 50mm f/1.4)
<b>Direction of view:</b> 20.5°	<b>Paper size:</b> 841 x 297 mm (half A1)	<b>Camera height:</b> 1.5 m AGL
<b>Nearest turbine:</b> 7.101 km	<b>Correct printed image size:</b> 820 x 260 mm	<b>Date and time:</b> 15/03/16, 10:11

**Figure: 9.111g**  
**Viewpoint C: Cnoc an Fhurain Bhain**