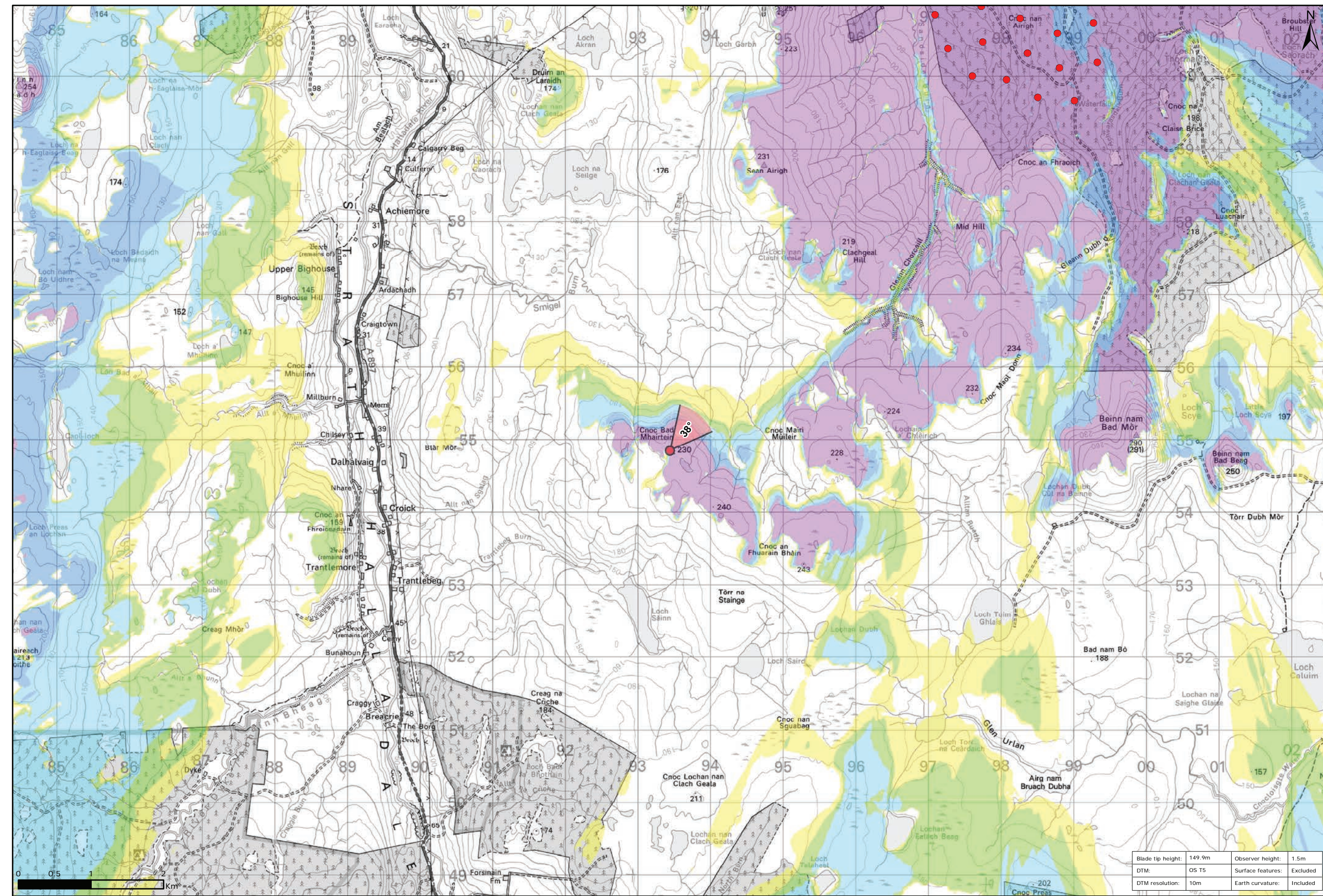


Viewpoint Location Plan Baseline Panorama
Scale: 1:150,000



Viewpoint Location Plan
Scale: 1:50,000 (Blade Tip ZTV)

Legend:

- Proposed
- ◡ 90 degree field of view viewpoint
- ◡ 53.5 degree field of view viewpoint
- ⊙ Viewpoint with no Photomontage View

Wind Farm Status (1:150,000 only):

- Turbine Locations
- Operational / Under Construction
- Consented
- Application
- Scoping

Blade Tip ZTV

No. of Theoretically Visible Turbines

- 1 - 4
- 5 - 8
- 9 - 12
- 13 - 16
- 17 - 20
- 21 - 24

Title: Viewpoint B: Cnoc Bad Mhairtein

Project: Limekiln Wind Farm S36C

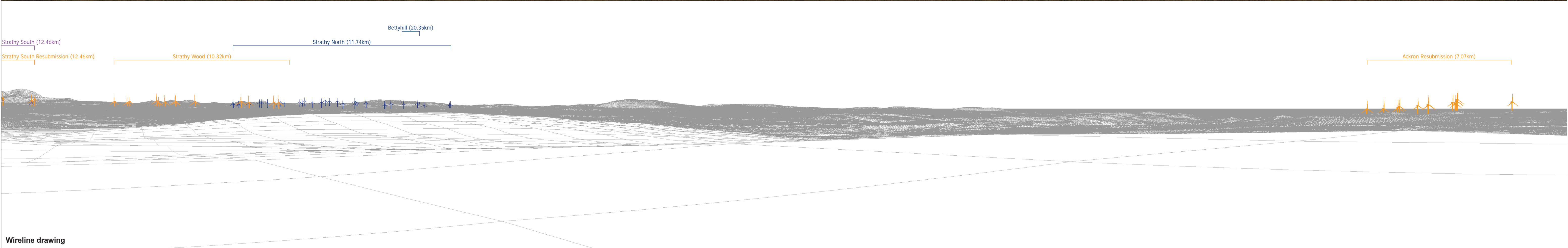
Source: © Crown copyright and database rights 2021 Ordnance Survey 0100031673

Client: Infinergy

Drawn by: TH	Checked: JP
Date: 15/06/2021	Figure: 9.110a
Scale: Multiple	Revision No: 0

Technical Data:

Blade tip height: 149.9m	Observer height: 1.5m
DTM: OS T5	Surface features: Excluded
DTM resolution: 10m	Earth curvature: Included



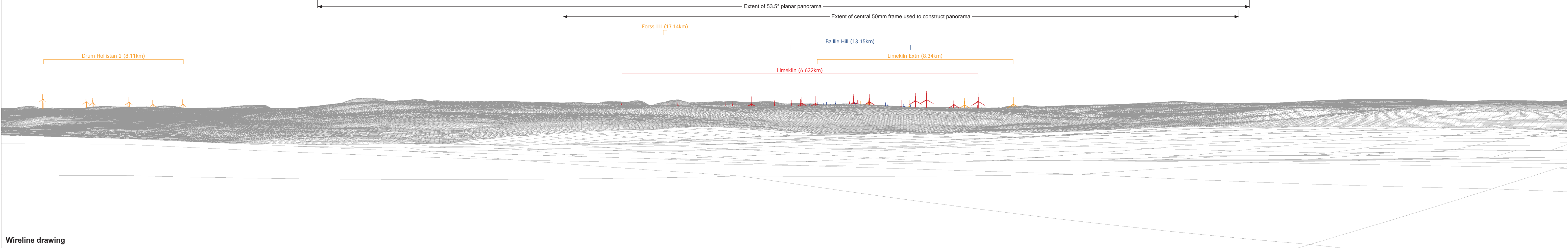
OS reference: 293440 E 954846 N	Horizontal field of view: 90° (cylindrical projection)	Camera: Canon EOS 6D
Eye level: 231.2 m AOD	Principal distance: 522 mm	Lens: 50mm (Canon EF 50mm f/1.4)
Direction of view: 308°		Camera height: 1.5 m AGL
Nearest turbine: 6.632 km		Date and time: 15/03/16, 10:43

Figure: 9.110b
Viewpoint B: Cnoc Bad Mhairtein



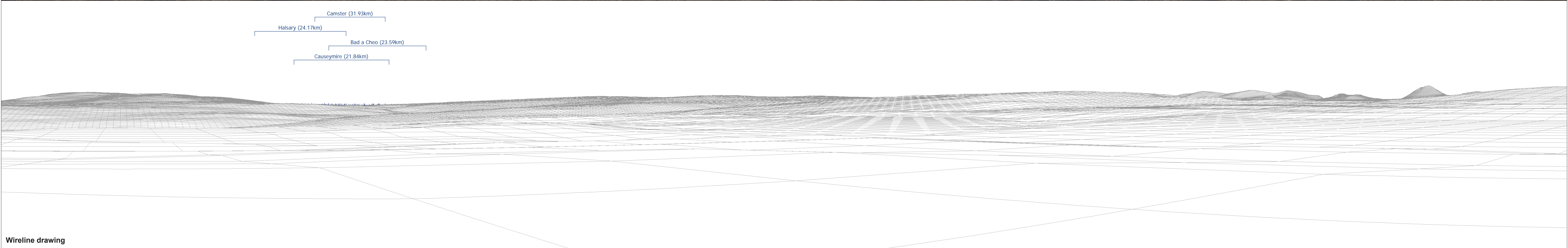
Baseline photograph

This image provides landscape and visual context only



Wireline drawing

<p>OS reference: 293440 E 954846 N Eye level: 231.2 m AOD Direction of view: 38° Nearest turbine: 6.632 km</p>	<p>Horizontal field of view: 90° (cylindrical projection) Principal distance: 522 mm</p>	<p>Camera: Canon EOS 6D Lens: 50mm (Canon EF 50mm f/1.4) Camera height: 1.5 m AGL Date and time: 15/03/16, 10:43</p>	<p>Figure: 9.110c Viewpoint B: Cnoc Bad Mhairtein</p> <p><small>© Crown copyright and database rights 2016 Ordnance Survey 0100031673</small></p>
---	---	---	--



OS reference: 293440 E 954846 N	Horizontal field of view: 90° (cylindrical projection)	Camera: Canon EOS 6D
Eye level: 231.2 m AOD	Principal distance: 522 mm	Lens: 50mm (Canon EF 50mm f/1.4)
Direction of view: 128°		Camera height: 1.5 m AGL
Nearest turbine: 6.632 km		Date and time: 15/03/16, 10:43

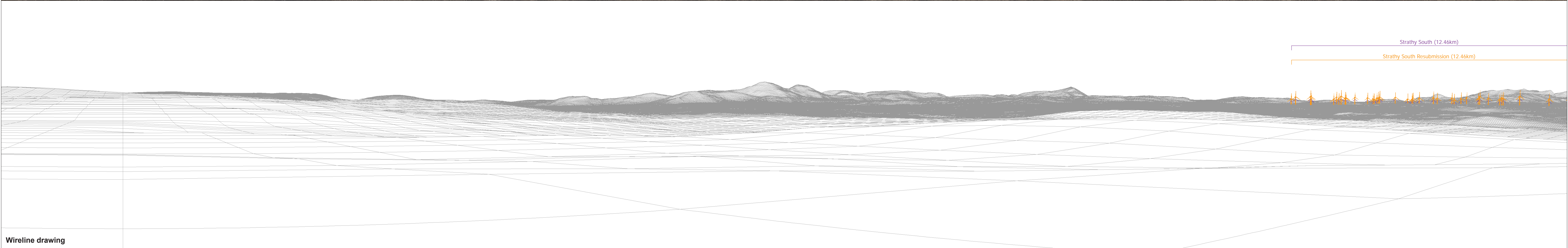
Figure: 9.110d
Viewpoint B: Cnoc Bad Mhairtein

© Crown copyright and database rights 2016 Ordnance Survey 0100031673



Baseline photograph

This image provides landscape and visual context only



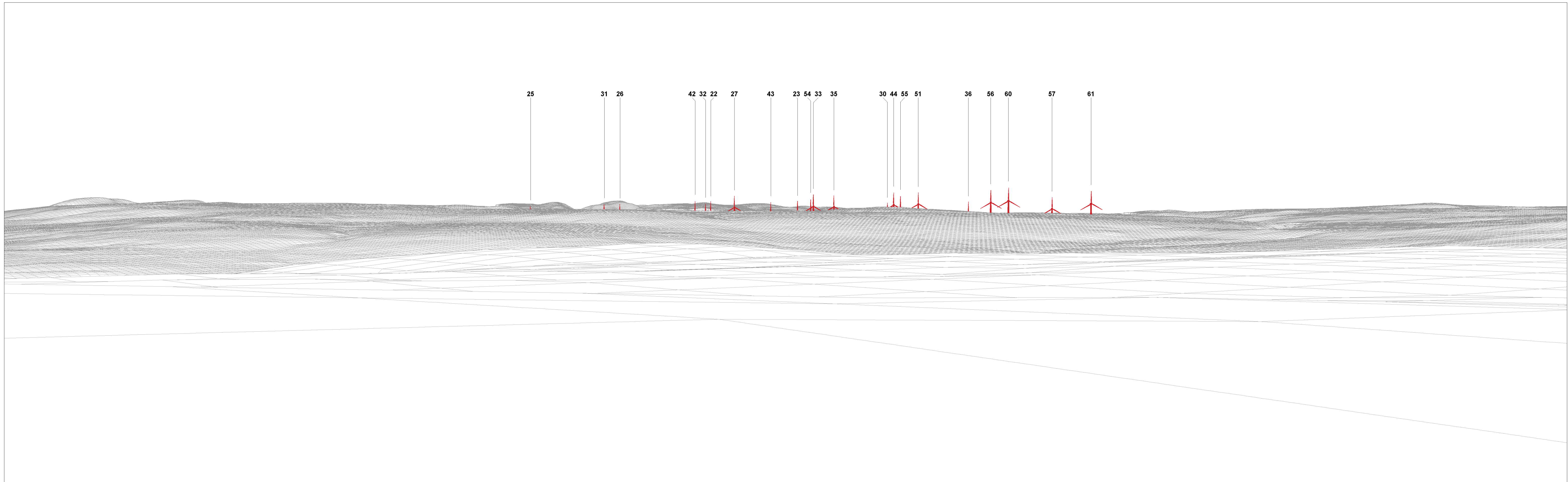
Wireline drawing

OS reference: 293440 E 954846 N
 Eye level: 231.2 m AOD
 Direction of view: 218°
 Nearest turbine: 6.632 km

Horizontal field of view: 90° (cylindrical projection)
 Principal distance: 522 mm

Camera: Canon EOS 6D
 Lens: 50mm (Canon EF 50mm f/1.4)
 Camera height: 1.5 m AGL
 Date and time: 15/03/16, 10:43

Figure: 9.110e
 Viewpoint B: Cnoc Bad Mhairtein



Wireline drawing

View flat at a comfortable arm's length

OS reference: 293440 E 954846 N
 Eye level: 231.2 m AOD
 Direction of view: 38°
 Nearest turbine: 6.632 km

Horizontal field of view: 53.5° (planar projection)
 Principal distance: 812.5 mm
 Paper size: 841 x 297 mm (half A1)
 Correct printed image size: 820 x 260 mm

Camera: Canon EOS 6D
 Lens: 50mm (Canon EF 50mm f/1.4)
 Camera height: 1.5 m AGL
 Date and time: 15/03/16, 10:43

Figure: 9.110f
 Viewpoint B: Cnoc Bad Mhairtein



Photomontage

View flat at a comfortable arm's length

OS reference: 293440 E 954846 N	Horizontal field of view: 53.5° (planar projection)	Camera: Canon EOS 6D	Figure: 9.110g Viewpoint B: Cnoc Bad Mhairtein <small>© Crown copyright and database rights 2016 Ordnance Survey 0100031673</small>
Eye level: 231.2 m AOD	Principal distance: 812.5 mm	Lens: 50mm (Canon EF 50mm f/1.4)	
Direction of view: 38°	Paper size: 841 x 297 mm (half A1)	Camera height: 1.5 m AGL	
Nearest turbine: 6.632 km	Correct printed image size: 820 x 260 mm	Date and time: 15/03/16, 10:43	