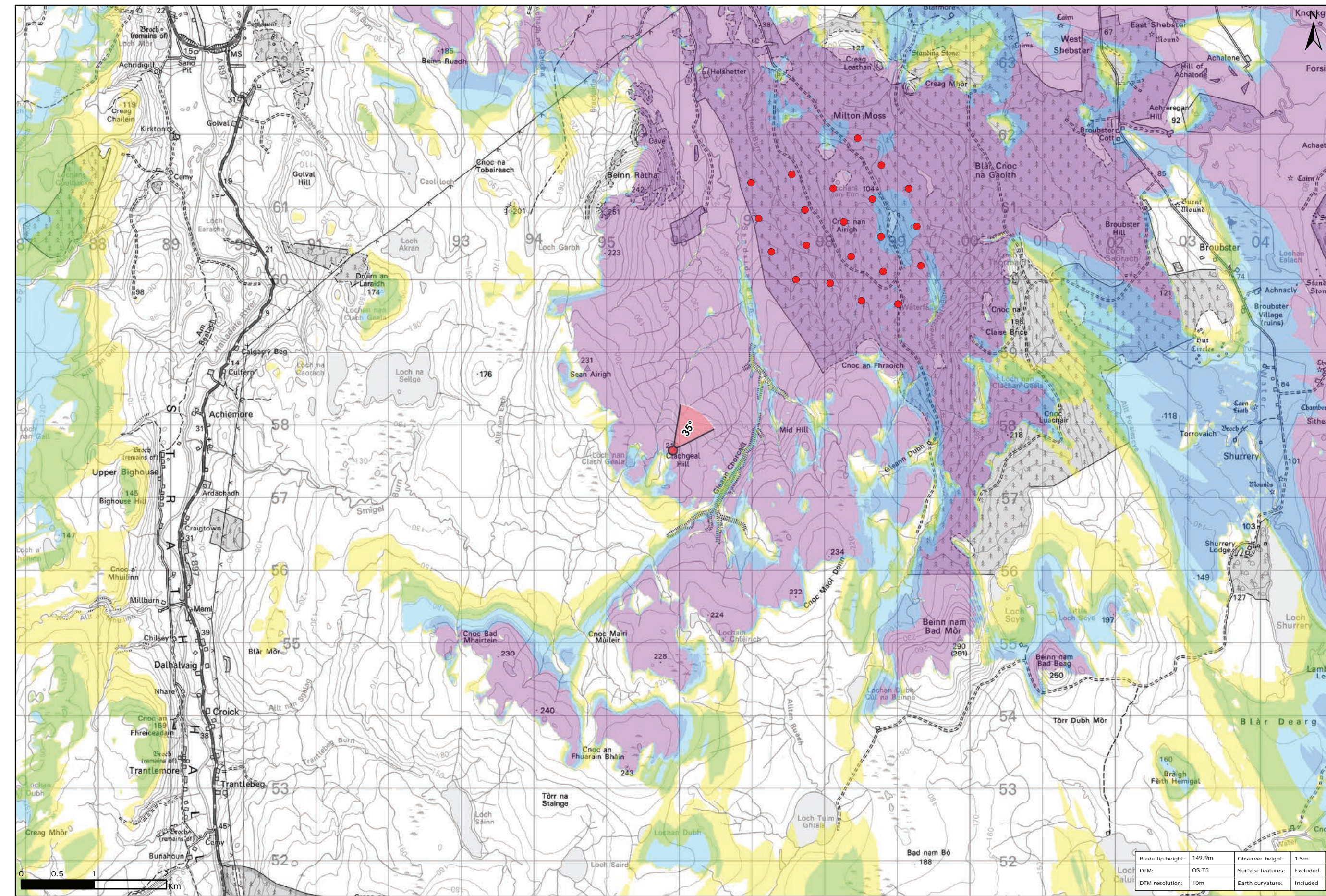


Viewpoint Location Plan Baseline Panorama
Scale: 1:150,000



Viewpoint Location Plan
Scale: 1:50,000 (Blade Tip ZTV)

Legend:

- Proposed
- 90 degree field of view viewpoint
- 53.5 degree field of view viewpoint
- Viewpoint with no Photomontage View

Wind Farm Status (1:150,000 only):

- Turbine Locations
- Operational / Under Construction
- Consented
- Application
- Scoping

Blade Tip ZTV

No. of Theoretically Visible Turbines

- 1 - 4
- 5 - 8
- 9 - 12
- 13 - 16
- 17 - 20
- 21 - 24

Title: Viewpoint A: Clachgeal Hill

Project: Limekiln Wind Farm S36C

Source: © Crown copyright and database rights 2021 Ordnance Survey 0100031673

Client: Infinergy

Drawn by: TH **Checked:** JP

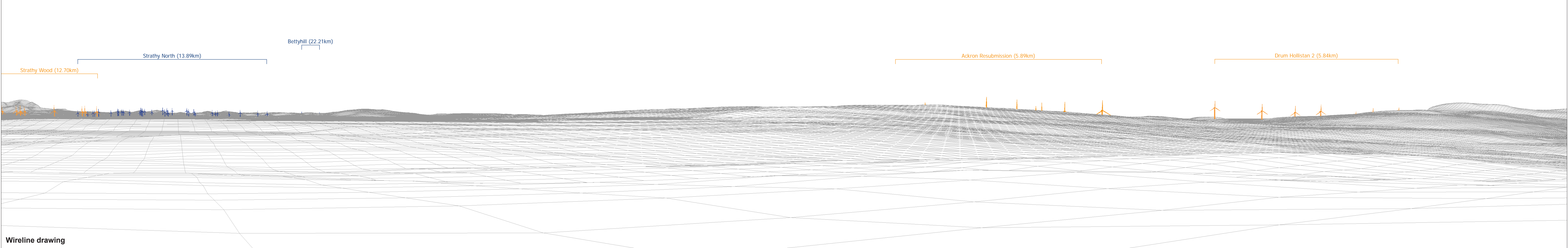
Date: 15/06/2021 **Figure:** 9.109a

Scale: Multiple **Revision No:** 0



Baseline photograph

This image provides landscape and visual context only



Wireline drawing

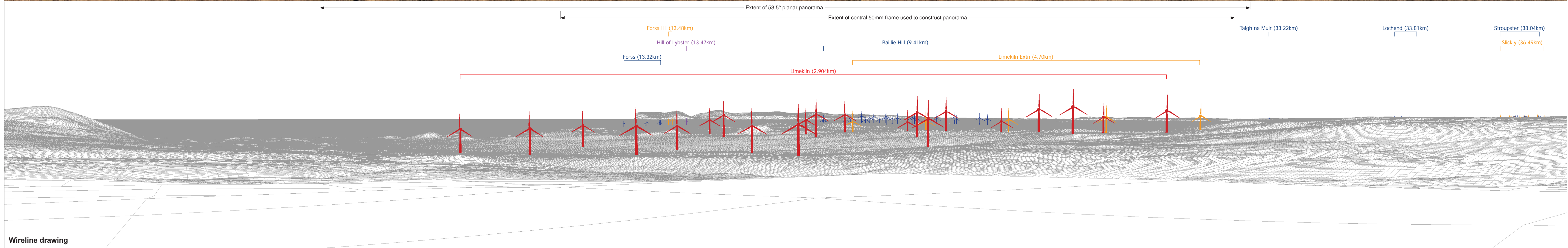
OS reference: 295911 E 957648 N	Horizontal field of view: 90° (cylindrical projection)	Camera: Canon EOS 6D
Eye level: 221.32 m AOD	Principal distance: 522 mm	Lens: 50mm (Canon EF 50mm f/1.4)
Direction of view: 305°		Camera height: 1.5 m AGL
Nearest turbine: 2.904 km		Date and time: 17/03/16, 10:43

Figure: 9.109b
Viewpoint A: Clachgeal Hill



Baseline photograph

This image provides landscape and visual context only



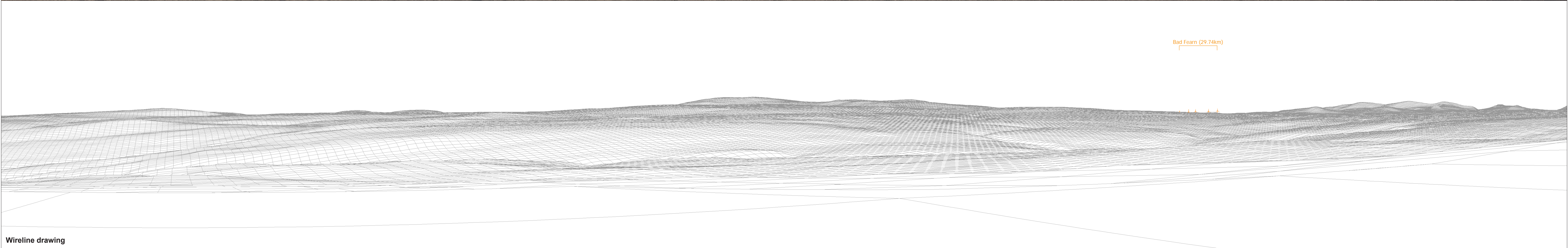
Wireline drawing

Figure: 9.109c
Viewpoint A: Clachgeal Hill

OS reference: 295911 E 957648 N
 Eye level: 221.32 m AOD
 Direction of view: 35°
 Nearest turbine: 2.904 km

Horizontal field of view: 90° (cylindrical projection)
 Principal distance: 522 mm

Camera: Canon EOS 6D
 Lens: 50mm (Canon EF 50mm f/1.4)
 Camera height: 1.5 m AGL
 Date and time: 17/03/16, 10:43



OS reference: 295911 E 957648 N	Horizontal field of view: 90° (cylindrical projection)	Camera: Canon EOS 6D
Eye level: 221.32 m AOD	Principal distance: 522 mm	Lens: 50mm (Canon EF 50mm f/1.4)
Direction of view: 125°		Camera height: 1.5 m AGL
Nearest turbine: 2.904 km		Date and time: 17/03/16, 10:43

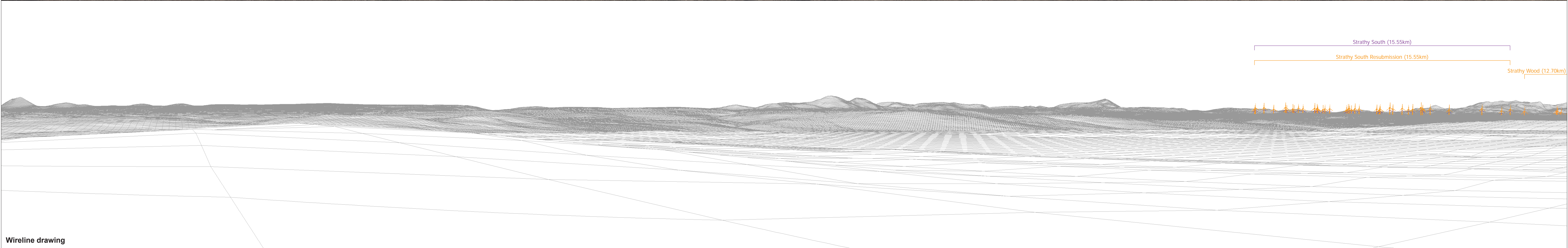
Figure: 9.109d
Viewpoint A: Clachgeal Hill

© Crown copyright and database rights 2016 Ordnance Survey 0100031673



Baseline photograph

This image provides landscape and visual context only



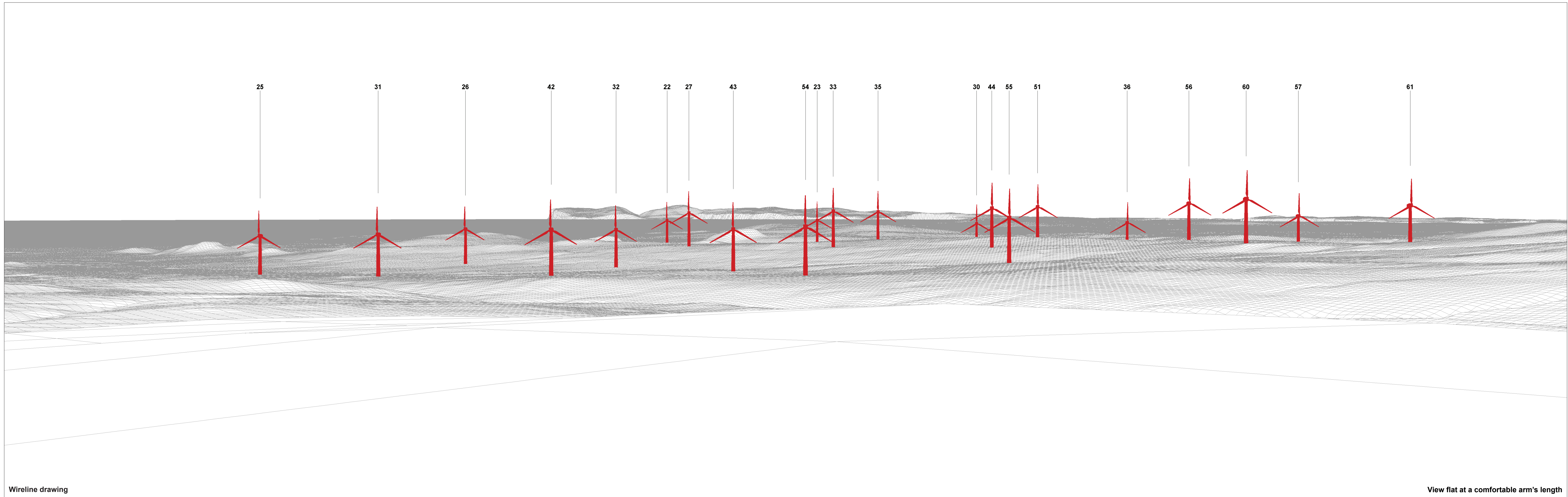
Wireline drawing

OS reference: 295911 E 957648 N
 Eye level: 221.32 m AOD
 Direction of view: 215°
 Nearest turbine: 2.904 km

Horizontal field of view: 90° (cylindrical projection)
 Principal distance: 522 mm

Camera: Canon EOS 6D
 Lens: 50mm (Canon EF 50mm f/1.4)
 Camera height: 1.5 m AGL
 Date and time: 17/03/16, 10:43

Figure: 9.109e
 Viewpoint A: Clachgeal Hill



Wireline drawing

View flat at a comfortable arm's length

OS reference: 295911 E 957648 N
 Eye level: 221.32 m AOD
 Direction of view: 35°
 Nearest turbine: 2.904 km

Horizontal field of view: 53.5° (planar projection)
 Principal distance: 812.5 mm
 Paper size: 841 x 297 mm (half A1)
 Correct printed image size: 820 x 260 mm

Camera: Canon EOS 6D
 Lens: 50mm (Canon EF 50mm f/1.4)
 Camera height: 1.5 m AGL
 Date and time: 17/03/16, 10:43

Figure: 9.109f
 Viewpoint A: Clachgeal Hill



Photomontage (NO INFRASTRUCTURE SHOWN)

View flat at a comfortable arm's length

OS reference: 295911 E 957648 N	Horizontal field of view: 53.5° (planar projection)	Camera: Canon EOS 6D
Eye level: 221.32 m AOD	Principal distance: 812.5 mm	Lens: 50mm (Canon EF 50mm f/1.4)
Direction of view: 35°	Paper size: 841 x 297 mm (half A1)	Camera height: 1.5 m AGL
Nearest turbine: 2.904 km	Correct printed image size: 820 x 260 mm	Date and time: 17/03/16, 10:43

Figure: 9.109g
Viewpoint A: Clachgeal Hill