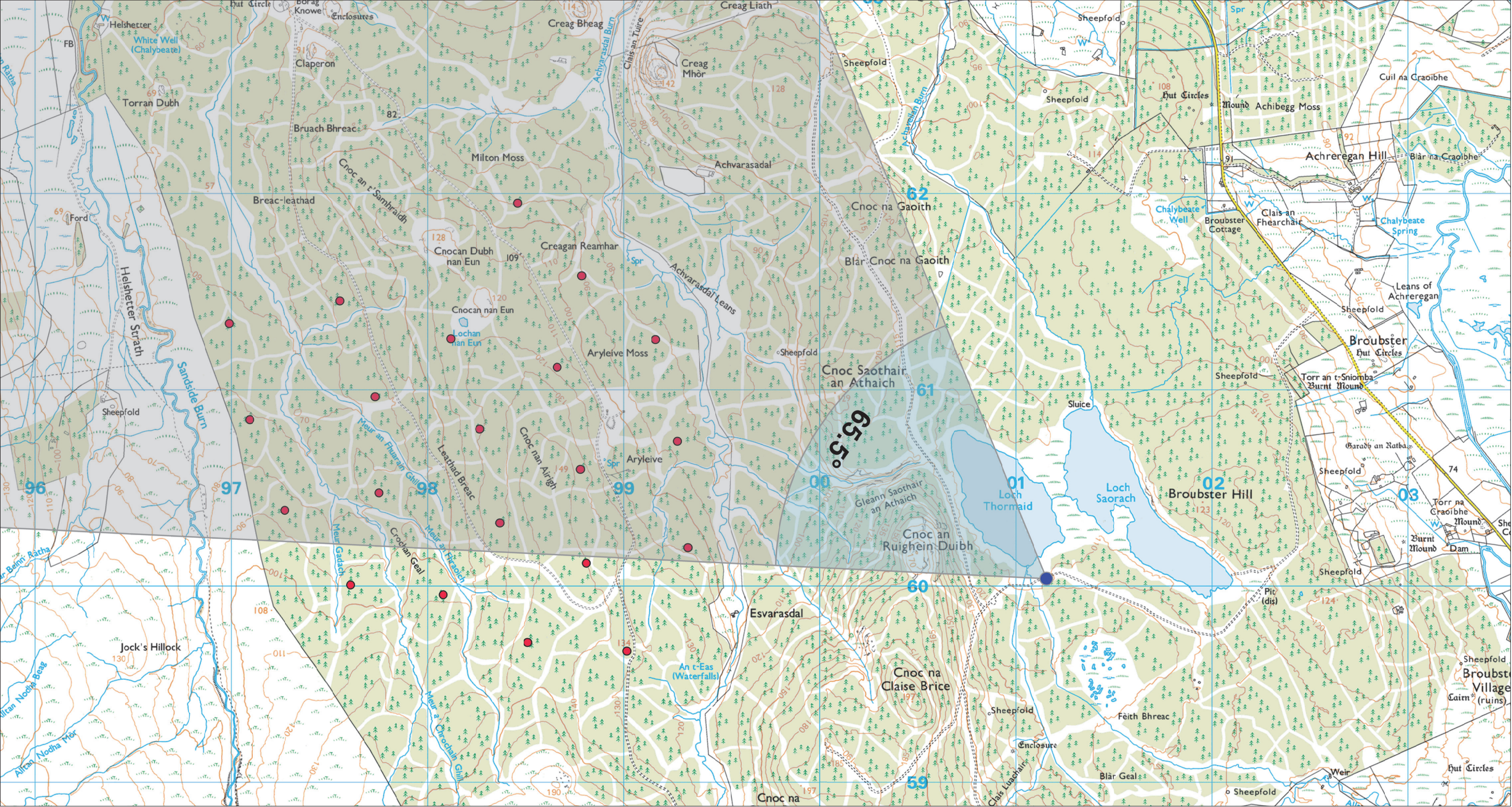


Viewpoint 20: A836, Hill of Forss



**Grid Ref: 301154 960038**      Distance to nearest turbine: 1.832km      AOD: 111.62m

0 500 1000m  
scale in metres 1: 20,000

This viewpoint is located on the Broubster Forest Core Path approximately 2.5km east of Broubster. The viewpoint is accessed from the minor road that connects Shebster in the north with Shurrery in the south. The forest track is located approximately 0.7km south of Broubster Cottage, from where it passes south-west around the southern side of Broubster Hill and then north-west to Loch Thormaoid. The core path is mostly enclosed by commercial forestry and the viewpoint location next to the loch, presents one of the few openings from which views to the site can be experienced.

Viewpoint 18  
**Broubster Forest**  
Figure No. 9.108

**Limekiln Wind Farm**  
**S36C Variation**





**Viewpoint 18: Broubster Forest** Distance to nearest turbine: 111.63km Camera: EOS 5D Mark II Focal length: 50mm vertical (27°) x 28mm horizontal (65.5°) Camera height: 1.5m Date:13/04/21 Time: 12:07

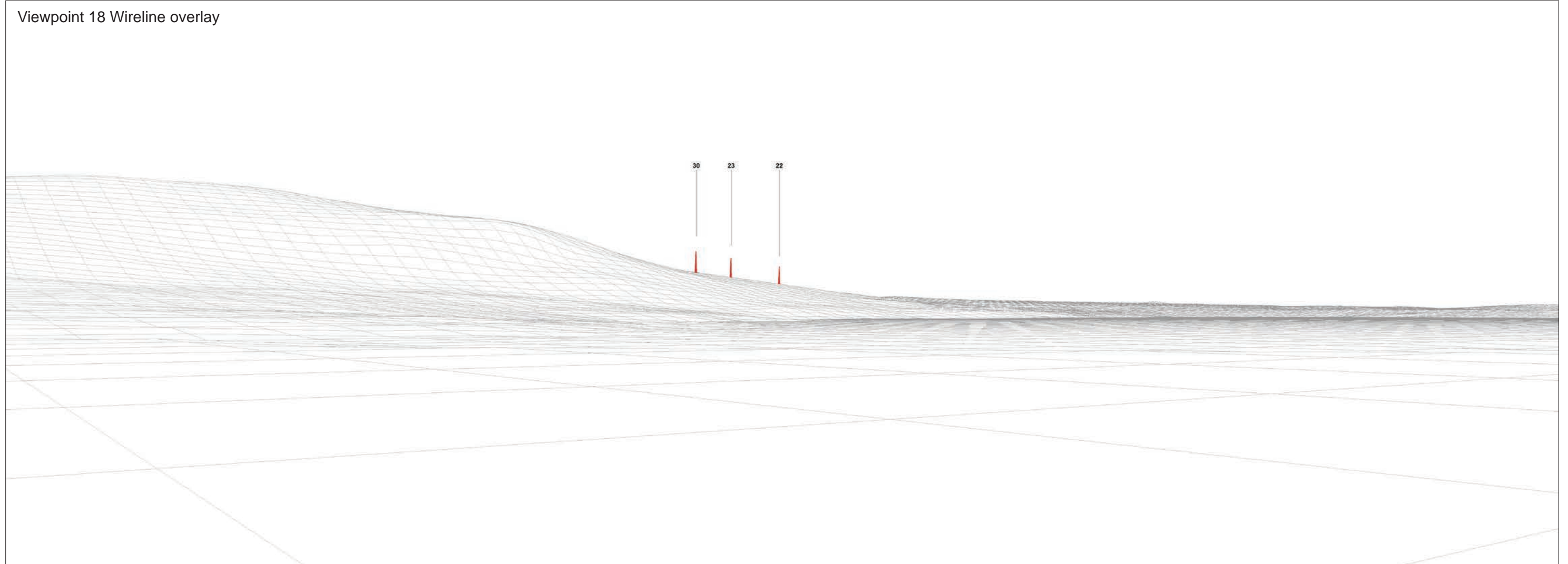
The images contained on this page and the following two pages are not representative of scale and distance from the actual viewpoint and show the wind farm development in its wider landscape context only.





Viewpoint 18 Existing view

Viewpoint 18 Wireline overlay







Viewpoint 18 Existing view

Viewpoint 18 Cumulative Wireline. Application turbines in red, operational / under construction in blue, consented in purple and application in orange.

