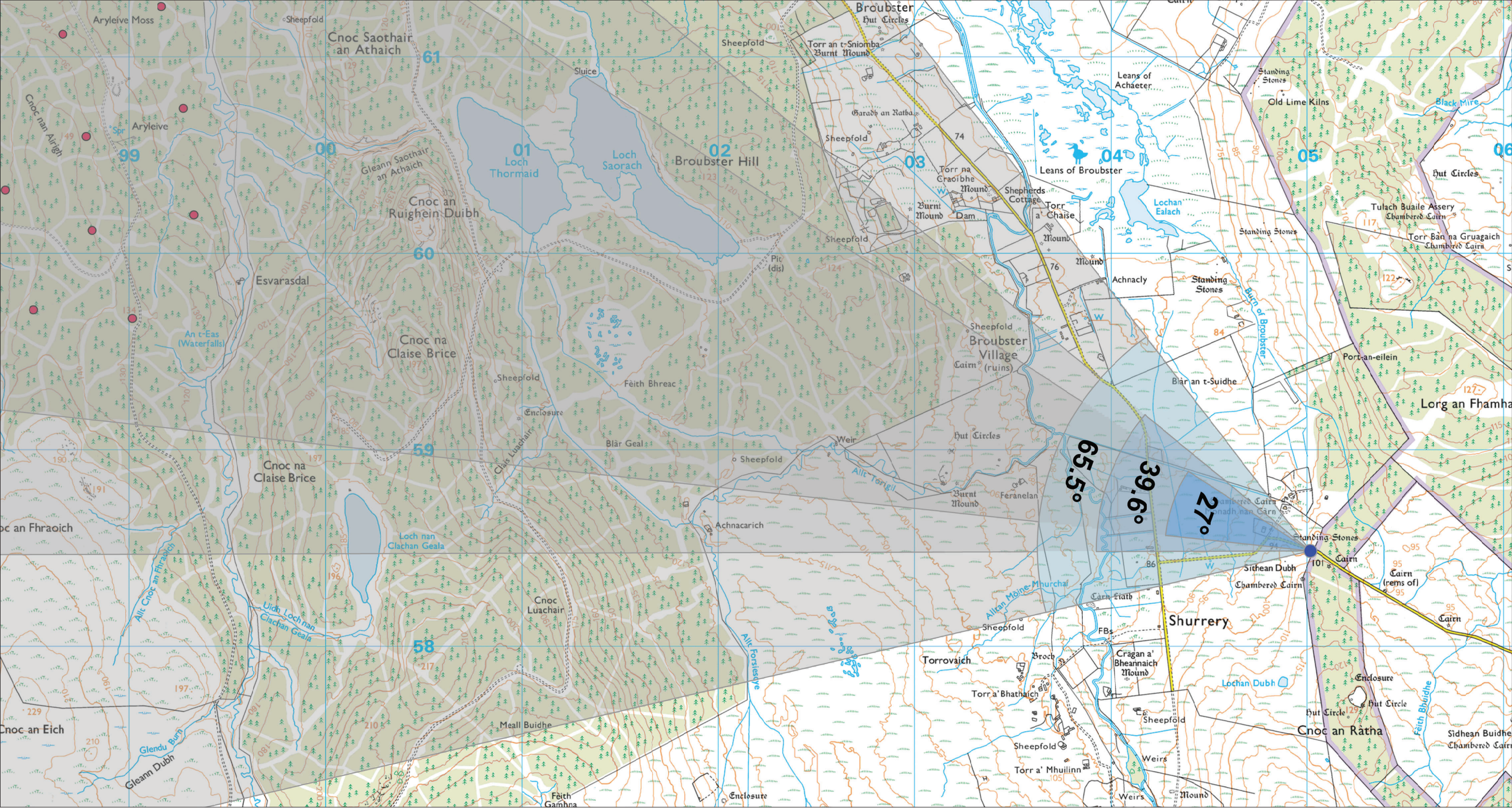


Viewpoint 19: Shurrery



Grid Ref: 305014 958497 Distance to nearest turbine: 5.934km AOD: 100.82m

The viewpoint is located on the minor road which connects the Brawlbin minor road to the south of Loch Calder and the Broubster minor road to the north of Shurrery Lodge. The minor road is generally orientated east – west and the viewpoint is towards the western end at the first layby for west-bound road-users close to where the road reaches a high point and approximately 200m east of the access to Monadh nan Carn is visible in the foreground.

Viewpoint 16
Shurrery
Figure No. 9.106

Limekiln Wind Farm
S36C Variation

Extent of 50mm single frame image



Photomontage

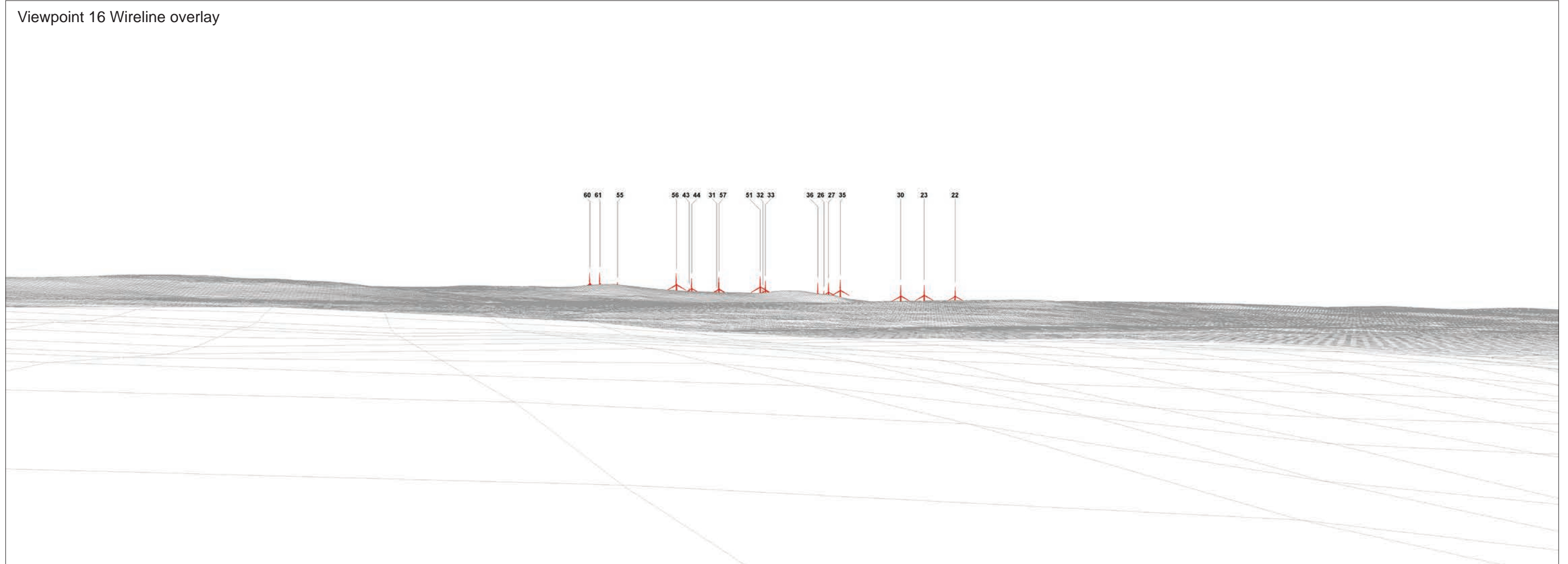
Viewpoint 16: Shurrery Distance to nearest turbine: 5.933km Camera: EOS 5D Mark II Focal length: 50mm vertical (27°) x 28mm horizontal (65.5°) Camera height: 1.5m Date: 17/03/16 Time: 13:26

The images contained on this page and the following two pages are not representative of scale and distance from the actual viewpoint and show the wind farm development in its wider landscape context only.



Viewpoint 16 Existing view

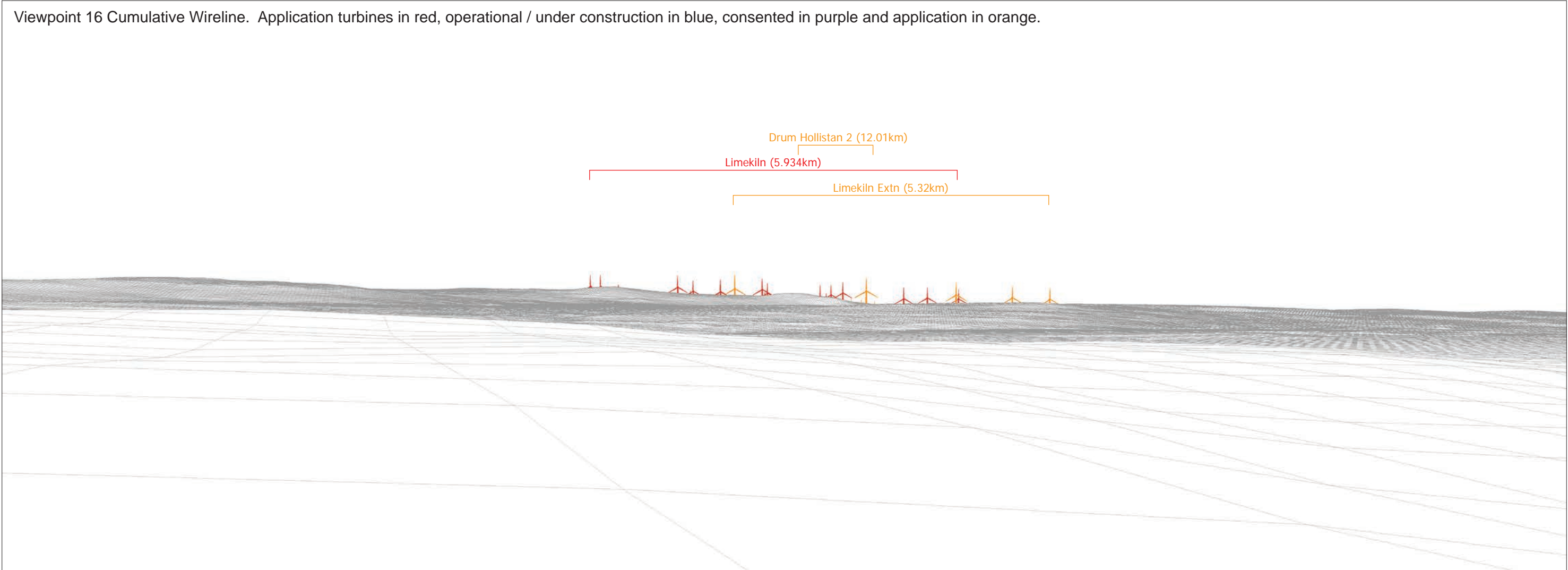
Viewpoint 16 Wireline overlay





Viewpoint 16 Existing view

Viewpoint 16 Cumulative Wireline. Application turbines in red, operational / under construction in blue, consented in purple and application in orange.





Viewpoint 16: Shurrery Distance to nearest turbine: 5.934km Camera: EOS 5D Mark II Focal length: 50mm Camera height: 1.5m Date: 12/04/21 Time: 13:47

When viewed at a comfortable arm's length (approx. 500mm), this printed image is representative of our detailed central vision, but is not representative of scale and distance.



Viewpoint 16: Shurrery Distance to nearest turbine: 5.933km Camera: EOS 5D Mark II Focal length: 75mm Camera height: 1.5m Date: 17/03/16 Time: 13:26
This image should be viewed at a comfortable arm's length (approx. 500mm).