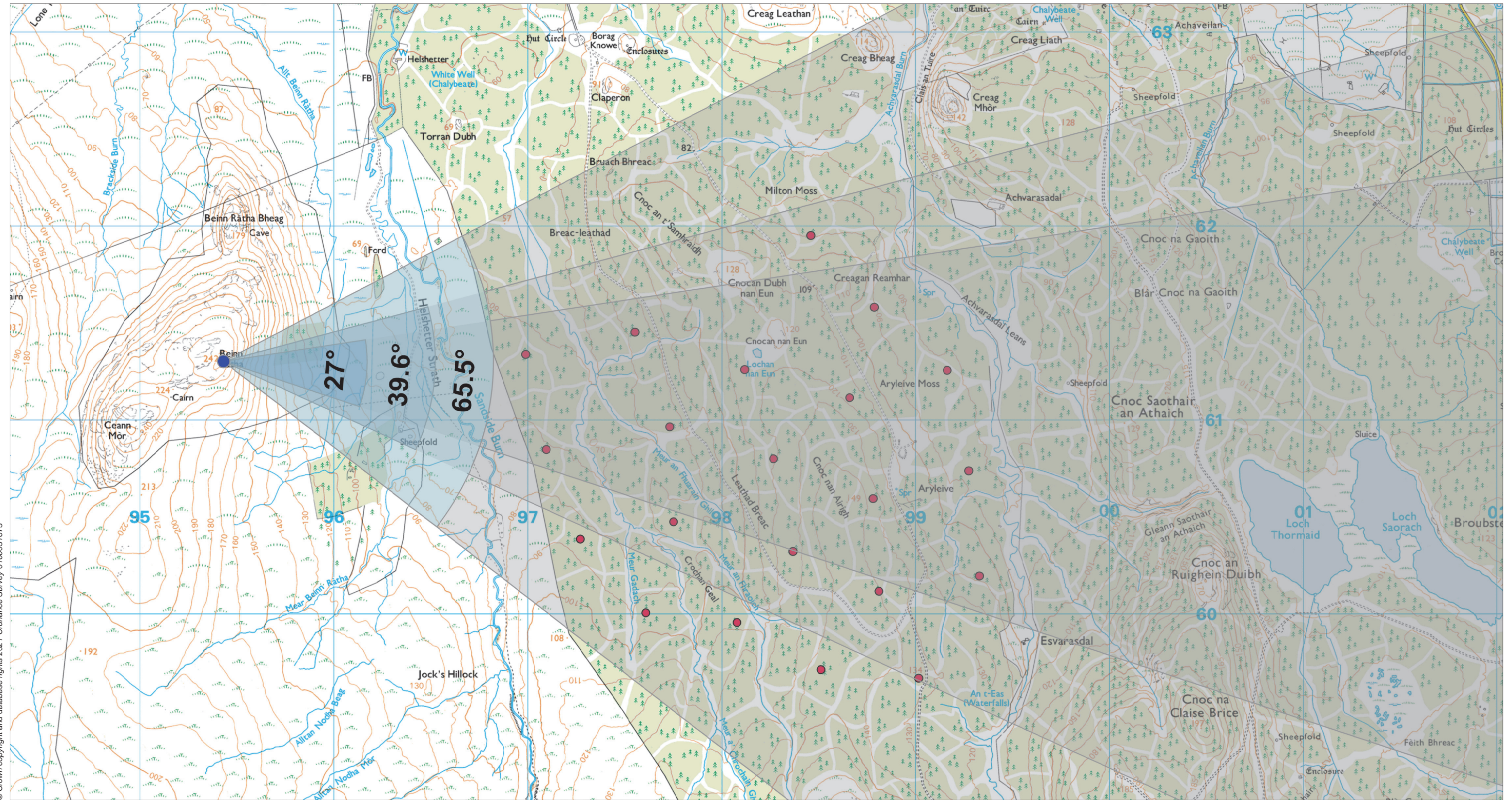
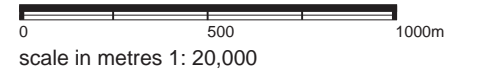


## Viewpoint 17: Beinn Ratha



© Crown copyright and database rights 2021. Ordnance Survey 0100031673

**Grid Ref: 295424 961314** Distance to nearest turbine: 1.564km AOD: 242.4m



The viewpoint is located at the summit of Beinn Ratha which is accessed from Reay on the A836. Follow The Avenue which lies on the south side of the western end of Reay. This residential street continues into a track which leads to a single property named Achins. Having crossed Sandside Burn to the immediate south, a track branches off to the west and runs parallel to the electricity transmission line to the south. Where the track ends cross Brackside Burn and continue over the rough and marshy ground up the shoulder of Beinn Ratha. The viewpoint is situated at the summit of Beinn Ratha.

Viewpoint 15  
**Beinn Ratha**  
 Figure No. 9.105

---

**Limekiln Wind Farm**  
**S36C Variation**



Extent of 50mm single frame image



Photomontage 9 (NO INFRASTRUCTURE SHOWN)

**Viewpoint 15: Beinn Ratha**

Distance to nearest turbine: 1.564km

Camera: EOS 5D Mark II

Focal length: 50mm vertical (27°) x 28mm horizontal (65.5°)

Camera height: 1.5m

Date: 15/04/21

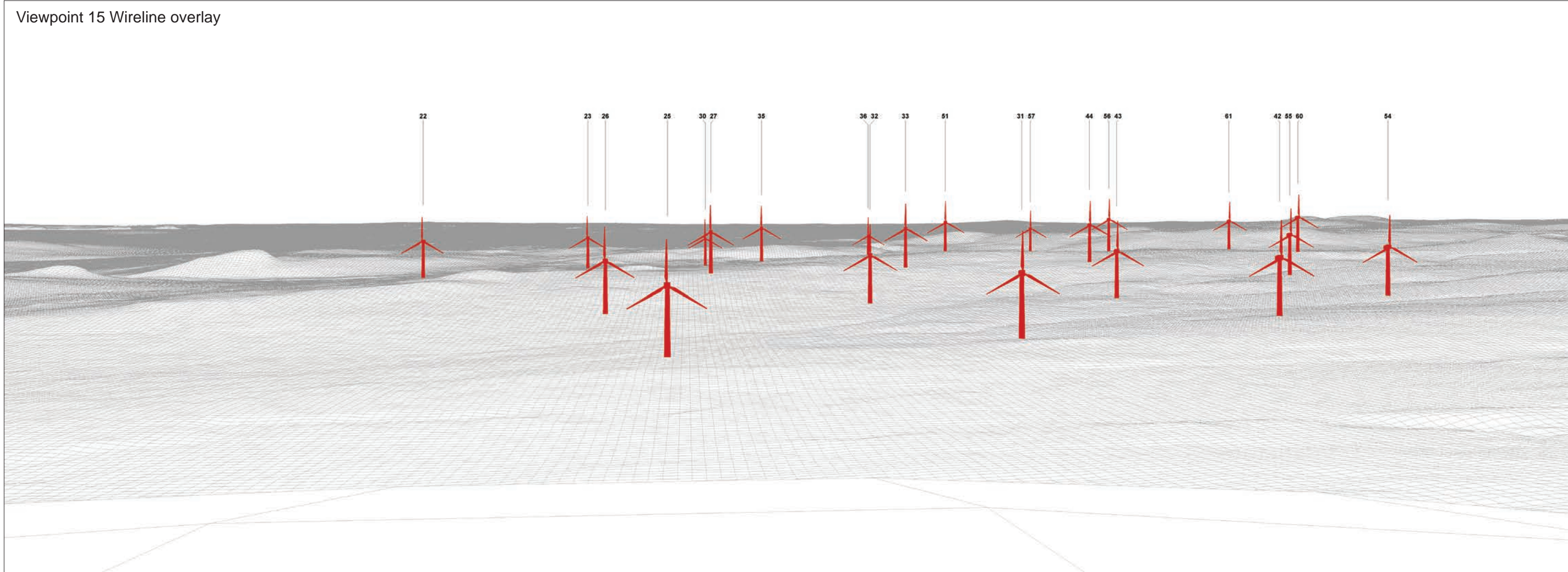
Time: 14:25

The images contained on this page and the following two pages are not representative of scale and distance from the actual viewpoint and show the wind farm development in its wider landscape context only.





Viewpoint 15 Existing view



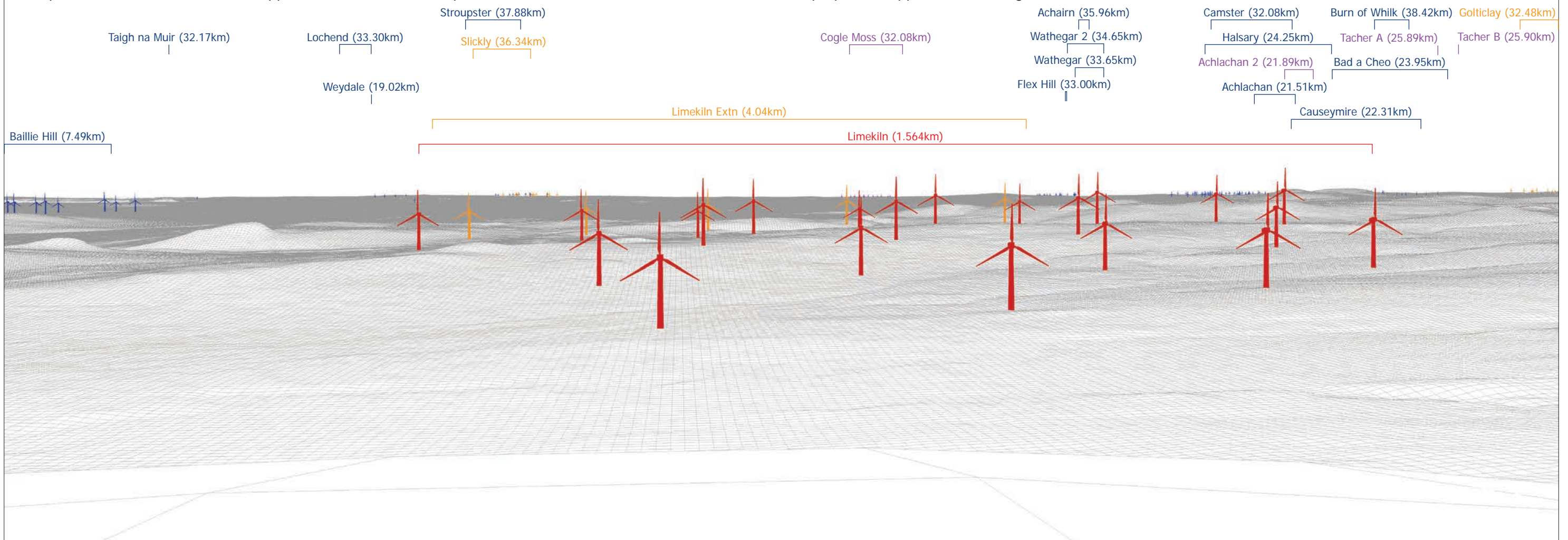
Viewpoint 15 Wireline overlay





Viewpoint 15 Existing view

Viewpoint 15 Cumulative Wireline. Application turbines in red, operational / under construction in blue, consented in purple and application in orange.







(NO INFRASTRUCTURE SHOWN)

**Viewpoint 15: Beinn Ratha**

Distance to nearest turbine: 1.564km

Camera: EOS 5D Mark II

Focal length: 50mm

Camera height: 1.5m

Date: 15/04/21

Time: 14:25

When viewed at a comfortable arm's length (approx. 500mm), this printed image is representative of our detailed central vision, but is not representative of scale and distance.





(NO INFRASTRUCTURE SHOWN)

**Viewpoint 15 Beinn Ratha**

Distance to nearest turbine: 1.564km

Camera: EOS 5D Mark II

Focal length: 75mm

Camera height: 1.5m

Date: 15/04/21

Time: 14:25

This image should be viewed at a comfortable arm's length (approx. 500mm).