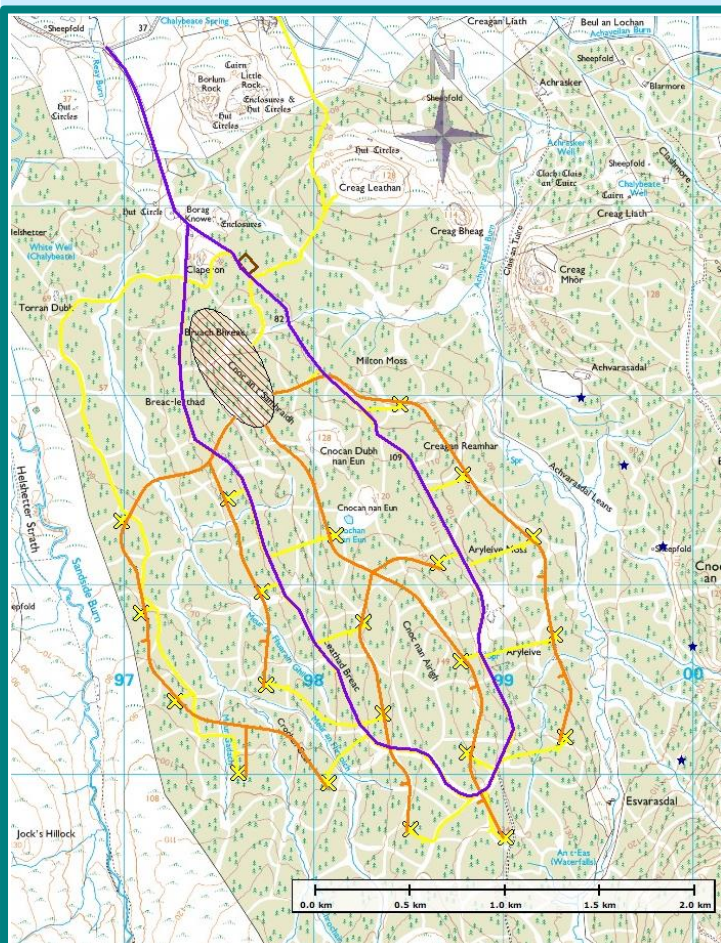


Wireframe from Reay Church viewpoint

Limekiln Wind Farm Section 36C Proposals - Update

It has been almost two years since Limekiln Wind Farm was consented and detailed construction planning commenced. In that period several things have happened including a review of the transmission charging regime (called TNUoS) by Ofgem and the Section 11 refusal to temporarily close the core path by Highland Council.

In order to deal with these issues, we are now looking to revise the wind farm's track design as well as increase the turbine sizes in line with the turbines proposed for Limekiln Wind Farm Extension. To do this, the planning process requires the submission of an application to vary the existing consent called a 'Section 36C application'. This requires a revised Environmental Impact Assessment, which will be put out to consultation in due course. To ensure the local community is fully consulted on the plans, Infinergy would like to invite you to visit our virtual consultation webpage. We will also be hosting a number of live 'chat' sessions for you to discuss the proposal with the team.



- Consented Access Tracks
- Limekiln Forest Core Path CA11.03
- Proposed Access Tracks

The Proposed Plans – what has changed?

- No change to the location or number of turbines on the Limekiln Estate.**
- Complete redesign of the access tracks** in order to minimise disturbance and ensure the core path remains open during construction.
- Removal of one borrow pit and reduction in access track length.** This is expected to translate as a reduction in construction traffic.
- Installed capacity per turbine can increase.** With the increased tip heights, we can use state of the art turbine technology which will most likely result in an increased capacity per turbine. In turn this will increase the amount of green energy generated alongside an increased community benefit fund.
- All 21 wind turbines increased to a tip height of 149.9m.** This is an increase of 24.3m based on the consented 125.6m to tip turbines and 10.5m on the 139.5m turbines.

Construction Update

Most of the early enabling works should be complete, ahead of schedule, by end of April, with a small number of outstanding jobs to be completed by a reduced team on site. These enabling works have seen up to 23 people employed full-time on site, all local to The Highland Council area, in addition to the fencing team of up to 8 at any one time. Very locally, we were delighted to be able to use Gows, Gunns and Simpson Oils to supply plant and fuel to the operation.

We've received (and passed on) some really excellent feedback on how well the site was managed from those using the core path. Where issues did arise, they were dealt with quickly and efficiently and that is much appreciated by us as the developer and our neighbours at site.

Community Benefit and Shared Ownership

We are committed to ensuring that the maximum benefit can be made of the community benefit fund for Limekiln Wind Farm and so are proposing to use the Caithness 'Travel to Work' area as the geographic spread of the fund. This is a recognised area of benefit and will allow those in most need to access the support they require. Management of the fund is yet to be finalised, and we will work with all the relevant local agencies to make sure it is accessible to all who need it most.

We have now secured 106MW grid connection for both Limekiln and Limekiln Extension therefore the community benefit will be over £500,000 per year. Over the lifetime of both windfarms, expected to be over 30 years, that equates to over £15 million – a huge contribution to the future of Caithness.

Virtual Community Consultation:

Whilst we would normally invite you along to a series of public exhibitions in the local hall, the pandemic has meant that all public engagement has had to move online. We would therefore like to invite you to view our plans and provide feedback via our website, where we will be hosting a virtual community consultation from:

11th May – 4th June 2021

Live Chat sessions on 18th/19th May and again on 1st/2nd June from 2-4pm and 6-8pm.

www.limekilnwindfarm.co.uk



Please visit us online!

Who we are...

Onshore wind developer Infinergy Ltd has a significant amount of experience developing wind farms in Scotland, successfully developing the consented 23-turbine Lochluichart Wind Farm in Ross-shire, the 13-turbine Tom nan Clach Wind Farm in Nairnshire and the 59-turbine Dorenell Wind Farm in Moray. The team of specialists working on the application for Ardtaraig Wind Farm has been brought together based on their extensive experience and expertise in wind farm design and development.

Get in touch

Normally, we'd use this space for a paper feedback form however, due to Covid restrictions, we're not physically in an office to receive them, so we'd ask you to email us on the address below with any comments or questions. Please note, any feedback you send us now or through the virtual consultation sessions will be used to inform our application but is not an official response to it. For that, you will need the application number, only given once the application is submitted, and you will need to send any representations to the Scottish Government directly.

Infinergy
93 Constitution Street
Edinburgh
EH6 7AE

Freephone number: 0800 316 8134
Email : info@limekilnwindfarm.co.uk
Website : www.limekilnwindfarm.co.uk
Post : Freepost Infinergy Ltd