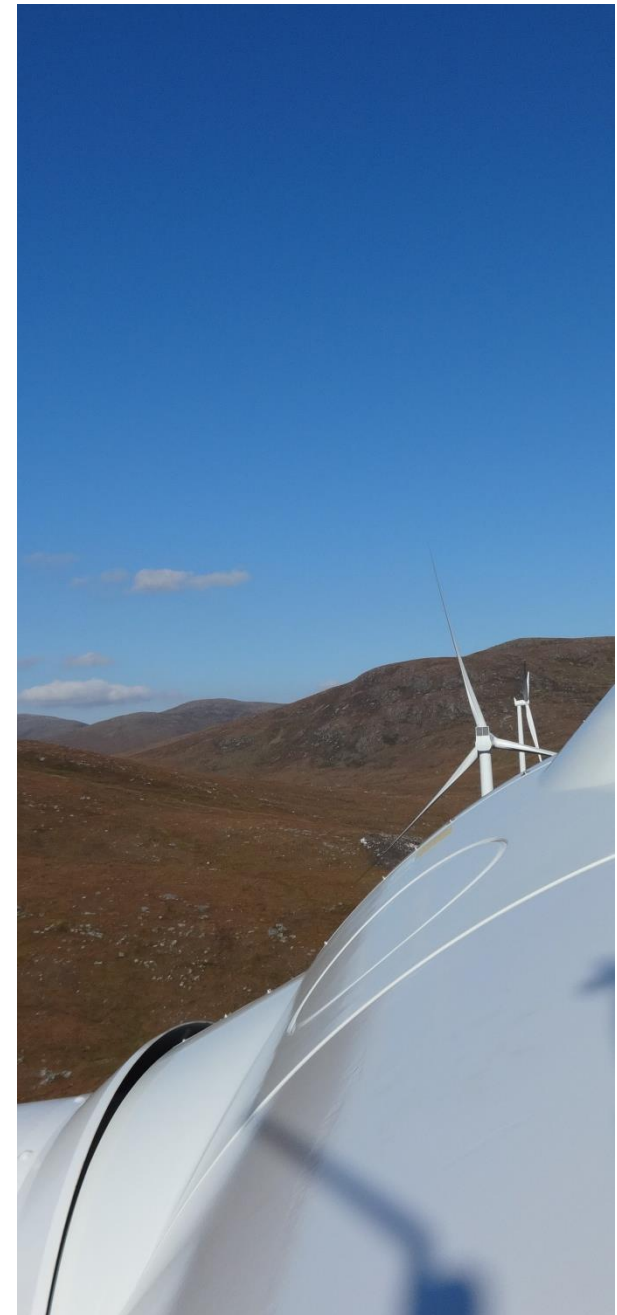


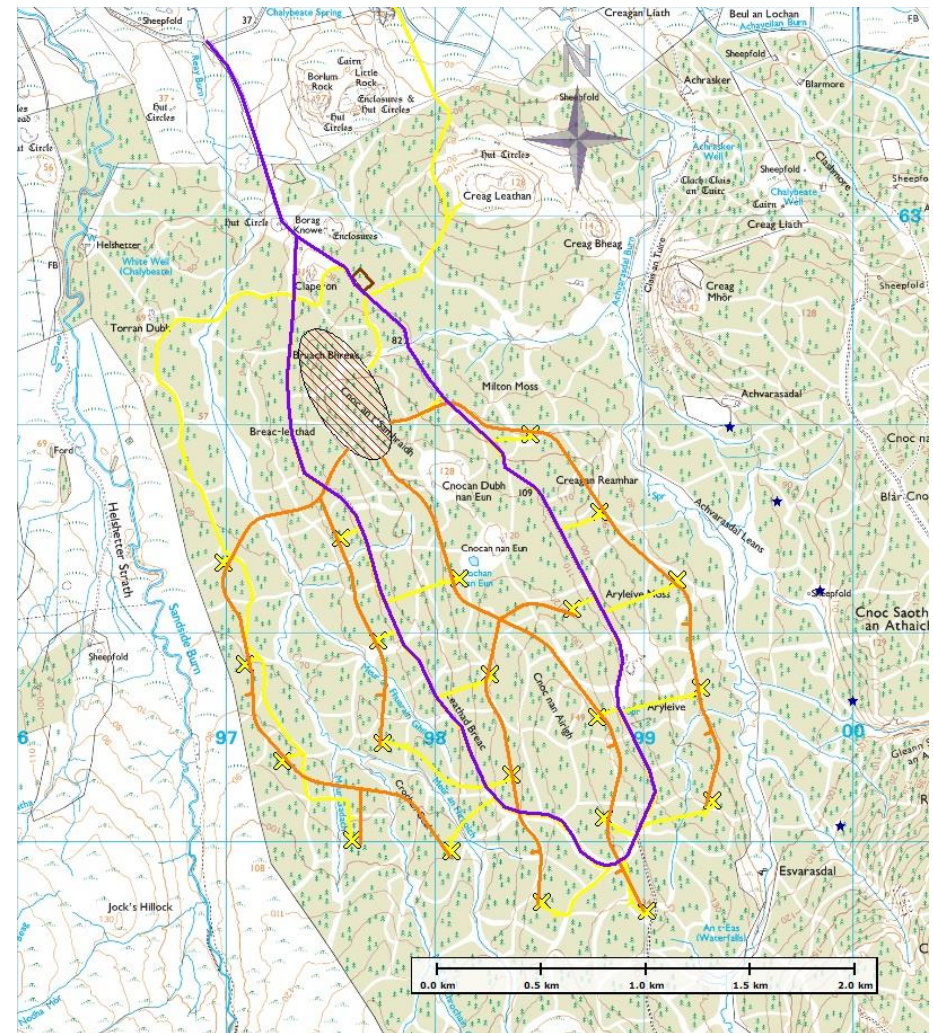
Welcome to the Virtual Community Consultation for Limekiln Wind Farm Section 36C

- Thank you for logging on to our Virtual Community Consultation. In the following slides you will find a selection of information boards outlining the new proposal for changes to the consented Limekiln Wind Farm.
- All of the panels will be available to download from the website following the consultation period. Please take your time to study the information and please do not hesitate to contact us in one of the ways set up if you have any questions.
- We would be grateful if you could complete a 'Feedback Form' which can be found on the consultation page.
- We will be hosting 2 rounds of live 'chat' to discuss the project with you. Details of these sessions will be on the consultation page.
- There are several other ways to obtain further information and to contact us:
 - Our website **www.limekilnwindfarm.co.uk** will be updated with all the latest information. We will publish the planning application documents including the Environmental Statement on the website once the application has been submitted.
 - Email us at **info@limekilnwindfarm.co.uk**
 - Ring the freephone number **0800 980 4299**



Overview of the proposed plans

- The proposal seeks to vary the consent of the current Limekiln Windfarm in a number of ways.
- The access track has been completely redesigned in order to minimise disturbance and ensure the core path remains open and accessible during construction.
- The turbine locations will remain as per the existing consented development.
- All 21 wind turbines increased to a tip height of 149.9m. This is an increase of 24.3m based on the six consented 125.6m to tip turbines and 10.5m on the 15 139.5m turbines. This will allow us to make use of the latest wind turbine technology and increase renewable electricity production with approximately 15% (equivalent to the energy use of an additional 10,000 households).
- The removal of one borrow pit and reduction in total access track length of approximately 2.5 km. This will translate into a reduction in construction traffic and less environmental impact.
- The extension of the project lifetime to 40 years, an increase of 10 years.
- The relocation and resizing of the construction compound further south in the site, further away from Reay village.



Map outlining the revised access tracks:

- Consented Access Tracks
- Limekiln Forest Core Path CA11.03
- Proposed Access Tracks

NOTE - Published for the purpose of identification only and although believed to be correct accuracy is not guaranteed.

Environmental Considerations

Local Wildlife: Extensive ecological surveys have been carried out on the proposed site including bat, bird, mammal and vegetation surveys. During construction, management plans, approved by the council, will be implemented to ensure any disturbance to local wildlife is kept to a minimum and where possible enhanced.

Peat: Varying depths of peat have been identified across the site and SEPA has acknowledged through the previous planning processes that deep peat is not a significant issue. Nonetheless additional peat probing has been carried out to determine the depth of peat along the newly revised and improved access track.

Landscape and Visual: The proposed development has been designed in line with the proposed Extension to Limekiln Wind Farm, from key viewpoints surrounding the site and, in particular, taking into account the findings from the public inquiry.

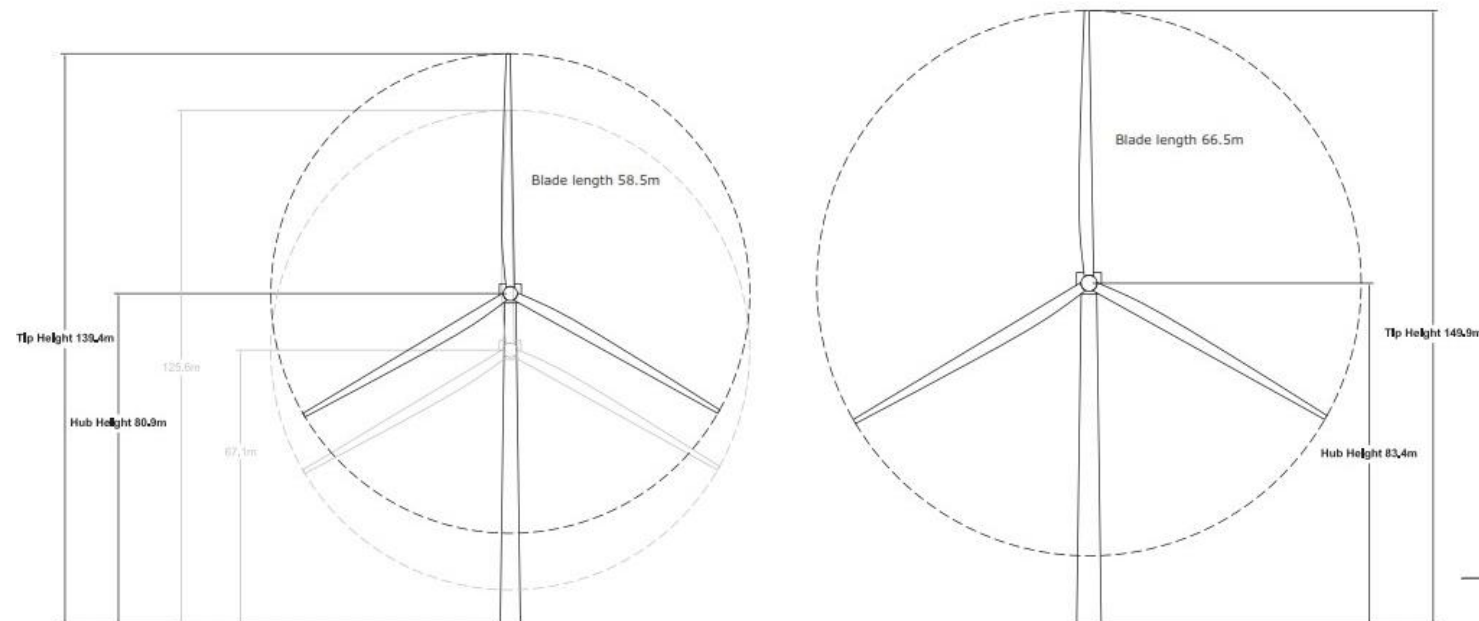
Forestry: As a result of the new track layout, the forestry plan will require updating. New proposals including analysis of felling requirements will be included in the application's submission.

Access

Route: As previously proposed, wind turbines will be delivered to Scrabster Harbour, which has a long track record of handling wind farm components landed by ship; deliveries will then follow the A836 to site.

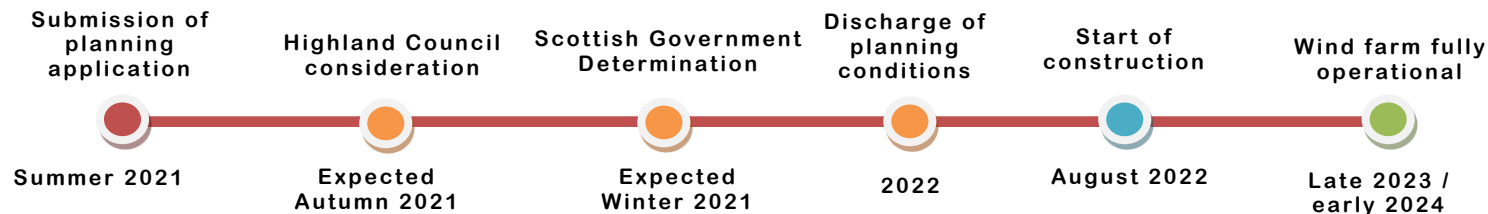
Preferred access: The consented access track off the A836, has now been constructed as part of the early enabling works.

Below is an illustration that represents the turbine likely to be used for the presently consented, maximum tip height of 125.6m/139.4m (left) should the revised Section 36C application not be permitted, and a potential turbine (right) which fits the parameters of the proposed tip height increase, to a maximum 149.9m.



Next steps

- We hope to submit the Section 36C planning application to vary the consent for **Limekiln Wind Farm** to the Scottish Government this Summer.
- An Environmental Impact Assessment Report ('EIA Report') including all the results from the surveys will be submitted with the planning application. All documents will be uploaded to our website www.limekilnwindfarm.co.uk under 'Downloads'.
- If you would like to receive a CD containing all the planning application documents or a hard copy of the Non-Technical Summary (NTS, a condensed version of the EIA Report), please request this via the feedback form available on the consultation page. The CDs and the NTS are provided free of charge for as long as stock last.
- Professional bodies in the fields of ecology, aviation, telecommunications, noise, landscape, cultural heritage, transport etc will all be re-consulted. To help the Government assess the proposal, not only do they listen to you, the local residents, but also the following consultees:
 - The Highland Council
 - Scottish Natural Heritage
 - VisitScotland
 - Historic Environment Scotland
 - RSPB
 - National Air Traffic Services
 - Ofcom
 - Local Community Councils
 - SEPA
- The timeline shown below gives an indication of possible timescales should the proposal be deemed acceptable and is subject to change depending on the planning process.



Community Benefit and Shared Ownership

- Community Benefit is something that comes as part and parcel of renewable energy developments these days and whilst it is not considered a 'benefit' in terms of the planning application, the Scottish Government has set the bar in terms of the amount a project is expected to contribute. This amount is £5,000 per MW of operational capacity. With our current grid availability of 106MW, the revised Section 36 proposal along with the Extension proposal would mean over £500,000 per year for the lifetime of the scheme.
- We want to ensure that the funds from Limekiln Wind Farm help the surrounding communities become more resilient and sustainable in the long term. We will ensure the proposed funds are managed by a suitable body which will cover the 'Travel to Work' area identified by public agencies in respect of Dounreay.
- There are many options open to the community on how to use this community benefit to generate additional income. The Scottish Government would, in particular, like to see communities maximising the potential a project such as a wind farm can bring through investment, and increased shared ownership is one of its primary aims going forwards. Up to 10% of Limekiln Wind Farm will remain available for shared ownership to communities.
- Please feel free to write any ideas that you have on how community benefit could make a positive contribution to your local community in the online feedback form, or by emailing us directly on info@limekilnwindfarm.co.uk



Update to the anticipated timeline

- Work on preparing the site for the construction of Limekiln Wind Farm started in 2020 and early felling and enabling works have now been substantially completed.
- Whilst we are progressing the Section 36C application, tree felling will continue for around 12 months. The delay to the construction element of the project will allow this activity to happen more efficiently since they will be working alone in the forest without any interaction with the other construction activities for the wind farm.
- Full construction activity is expected to start in spring 2022 with the construction of the on-site substation and the internal access tracks as the first construction activities.
- The initial construction activity included the formation of the wind farm access track from the A836, running through the Milton property onto the site to allow construction traffic access to the wind farm and for the removal of the felled timber. Next to that the substation platform has been constructed and the borrow pit opened.

Substation platform

